

LFPL Budget Presentation

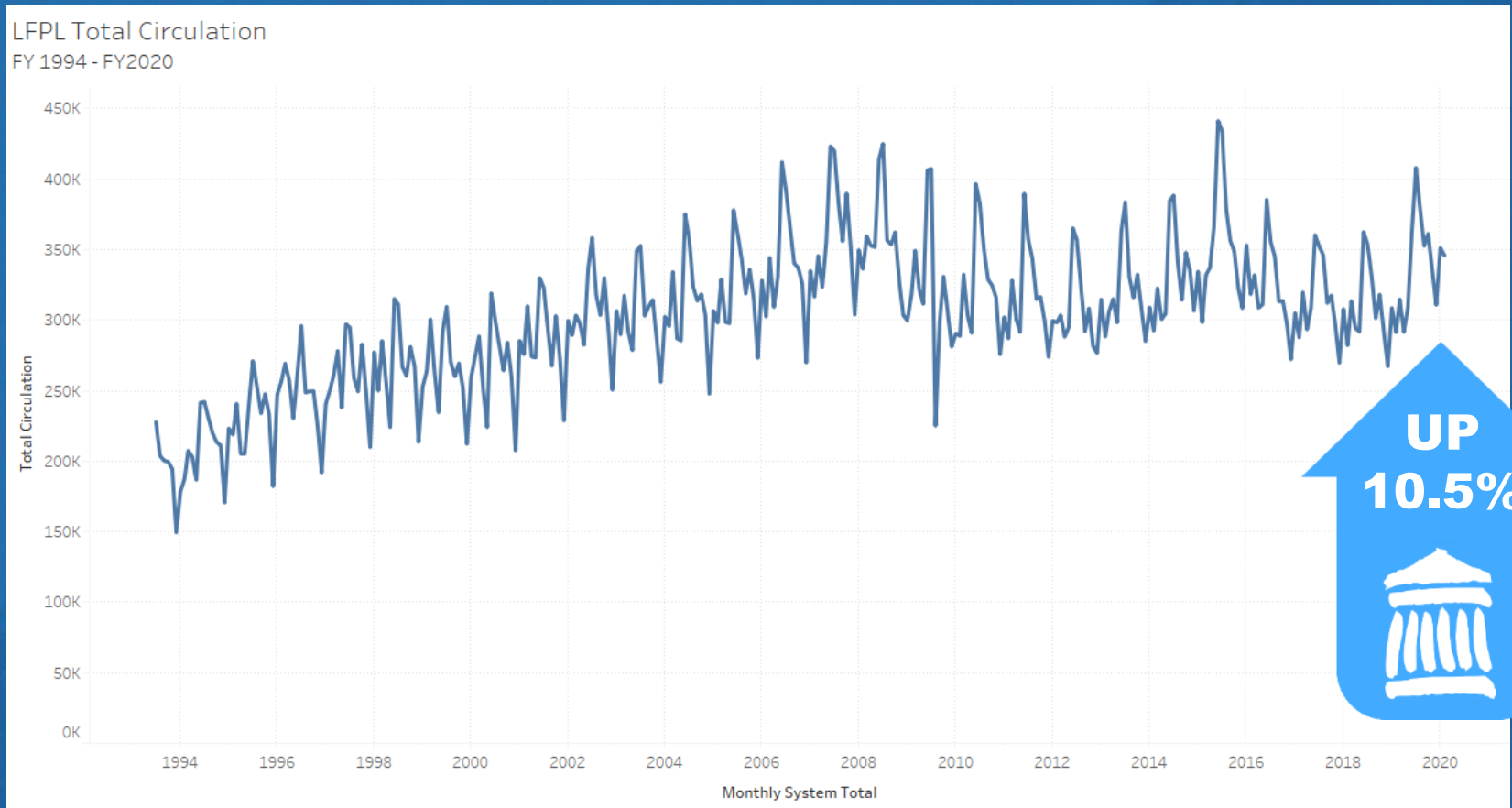
LEE BURCHFIELD
LIBRARY DIRECTOR

MAY 26, 2020



March 1, 2020

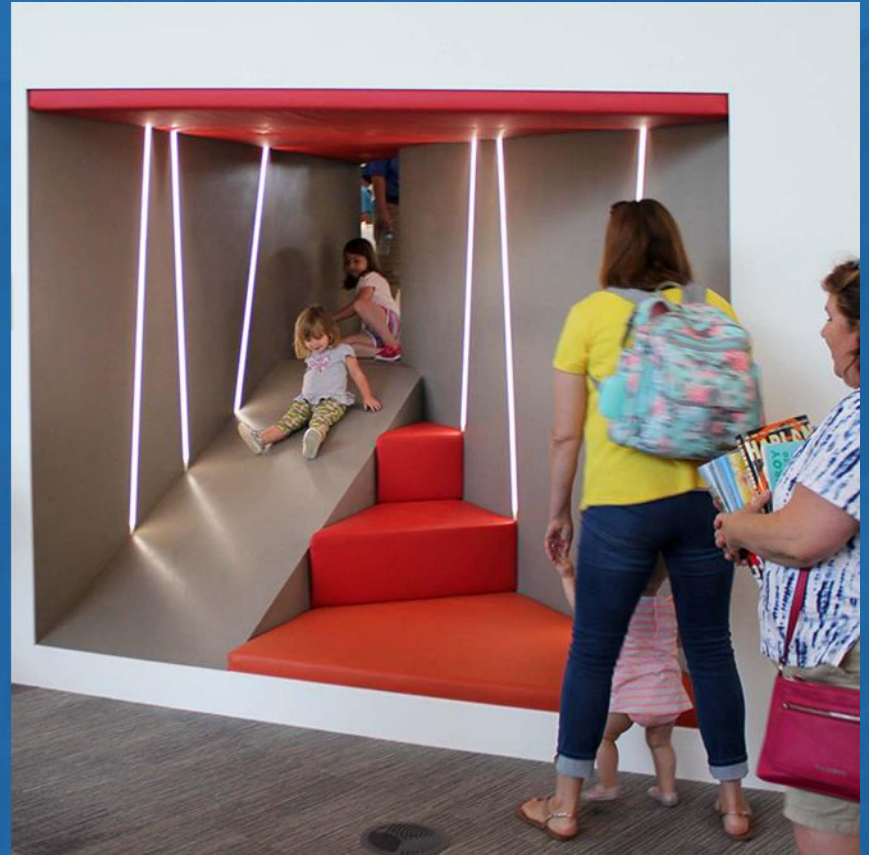
The Library had great momentum.



Newly renovated St. Matthews Library



New Northeast Regional Library



Family S.T.E.A.M Day

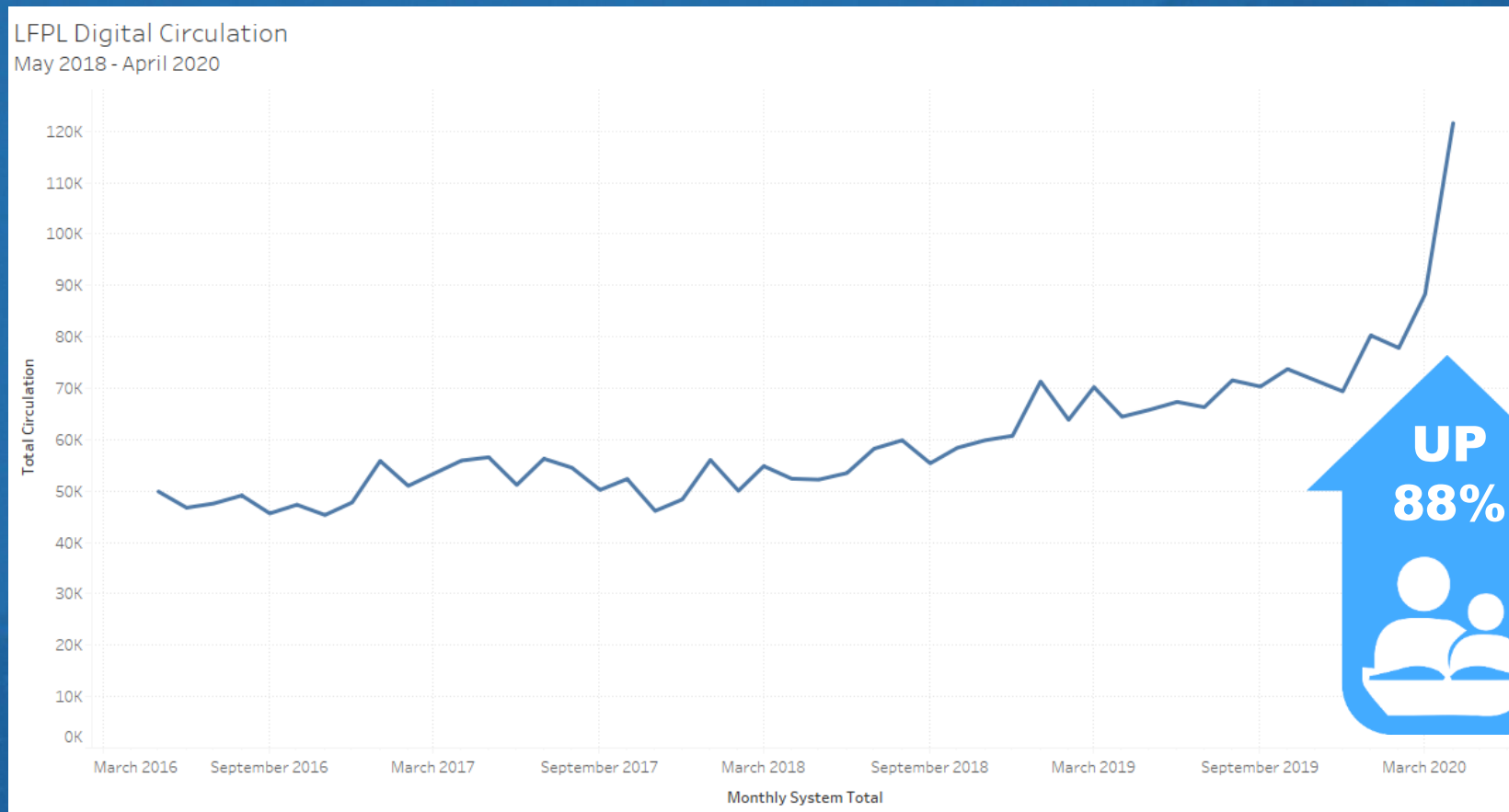


COVID-19 Impact

- All locations closed as of March 15, 2020
- 86% of staff furloughed as of May 3, 2020
- How-to-Festival canceled
- Summer Reading reimagined as a virtual event
- The Library continues to offer access to online services and digital materials
- Some services were expanded or increased: Ancestry.com, Kanopy, spending on eBooks, eMagazines

Dramatic Increases since March 15, 2020

- eBook Circulation past 24 months



Other Significant Metrics: April-May 2020

- 167,566 Total Items Checked Out
- 2,079 New Library Cards Issued
- 41,465 Lynda.com Training Videos Viewed
- 5,942 Movies watched on Kanopy
- 10,495 Digital Magazine Checkouts
- 43,689 Records Viewed on Ancestry.com
- 5,683 Library Programming Views on Facebook
- 2,305 Books Given Away at JCPS Meal Distribution Sites

What does FY21 Look Like?

- Continue expanding access to digital and online services
- Deliver a Summer Reading program that is fun, effective, and equitable
- Work with partners to expand Bookmobile and Outreach capacity
- Continue to pursue capital improvements where resources permit