

Department of Public Health and Wellness

FY21 Budget Presentation

June 10, 2020

Sarah Moyer, MD, MPH
Director



Mission

Achieve health equity and improve the health and well-being of all Louisville residents and visitors.

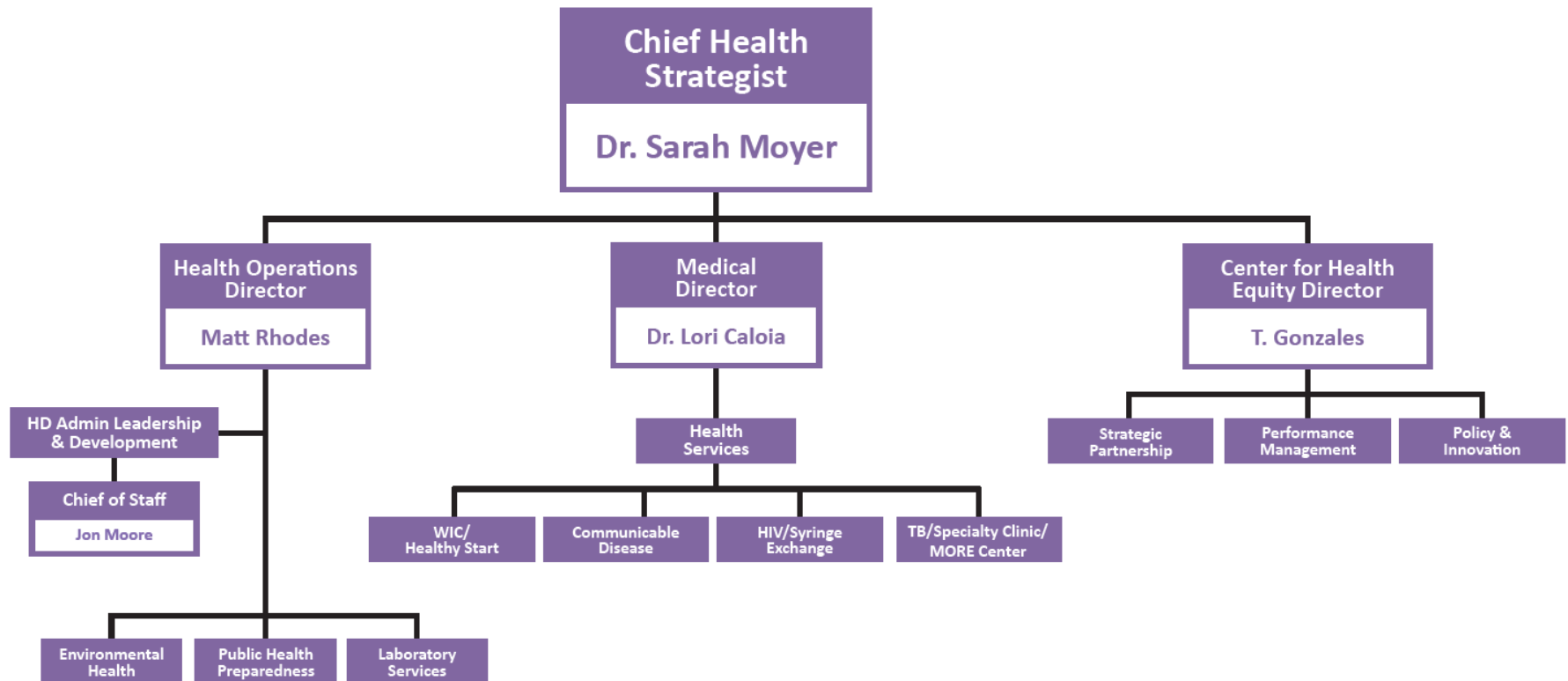
Vision

A healthy Louisville where everyone and every community thrives.

Values

Collaboration,
Innovation, Grit,
Quality, Integrity

LMPHW OVERVIEW





The diagram features a stylized tree with a thick brown trunk and a large, rounded green canopy. The ground is depicted in two layers: a thin layer of green grass on top and a thicker layer of brown soil below. The tree's roots are shown extending into the soil. Three text labels are positioned around the tree: 'HEALTH OUTCOMES' is in a white box at the top, 'ROOT CAUSES' is in the middle, and 'SYSTEMS OF POWER' is in a white box at the bottom. Two black arrows point upwards: one from the 'ROOT CAUSES' level to the 'HEALTH OUTCOMES' level, and another from the 'SYSTEMS OF POWER' level to the 'ROOT CAUSES' level.

HEALTH OUTCOMES

ROOT CAUSES

SYSTEMS OF POWER

PUBLIC POLICY

national, state, local law

Connect with your elected officials!

- Universal coverage of COVID testing and care
- Strategic National Stockpile of PPE
- Comprehensive leave policies including paid sick leave
- Moratorium on Evictions

COMMUNITY

relationships among organizations

How can we link resources together?

- Planning for and providing essential needs
- Surge planning, and testing coordination with local hospitals
- Providing inclusive and transparent education

ORGANIZATIONAL

organizations, social institutions

Change where you work, learn, pray, and play.

- Implementing telework and flexible leave policies
- Installing physical barriers such as plexiglass
- Implementing workplace screening and education including temperature checks

INTERPERSONAL

family, friends, social networks

Support each other!

- Social distancing – stay 6ft apart
- Supporting friends, family and neighbors through technology
- Checking on older adults in your circle

INDIVIDUAL

knowledge, attitudes, skills

What you can do!

- Staying home if you're sick
- Wearing a mask
- Washing your hands

CORE PUBLIC HEALTH

FOUNDATIONAL PUBLIC HEALTH

Five focus areas, which includes
statutorily and regulatorily defined
services:

1. Population Health – Center for Health Equity
2. Enforcement of Regulation – Environmental Health
3. Emergency Preparedness & Response
4. Communicable Disease Control – CD Office, infectious disease clinics
5. Administrative and organizational Infrastructure

Community Health Assessment – HL2025

WIC

HANDS

HARM REDUCTION & SUD

**Local Public
Health Priorities
– Healthy
Louisville 2025**

Questions

For information about
COVID-19, visit
louisvilleky.gov/health

To view the **Community
Health Needs Assessment**,
visit
healthylouisville2025.com

To schedule an appointment
for Women, Infants, and
Children (**WIC**) **services**, call
502-574-5978

Wear a mask
Wash your hands
Stay home if you're sick



Department of
PUBLIC HEALTH AND WELLNESS

www.louisvilleky.gov/health

LMPHW

PROGRAMS AND SERVICES

Center for Health Equity

Policy and Innovation

- Health Equity Report
- Health in All Policies
- Academic Health Department
- Health Impact Assessments
- Racial Equity Impact Assessments
- Health Equity Training
- Senior Medicare Patrol
- Tobacco Prevention and Cessation
- Participatory Budgeting
- Created IMT Equity Audit for assessing plan proposals
- Completed daily updates for Equity Officer on emerging COVID-19 equity issues to be shared in IMT Briefing beginning April 8
- Successfully proposed plans to address COVID-19 risks for workers, incarcerated people, and people with substance use disorders

Strategic Partnerships

- Substance Use Disorder Plan
- Healthy Babies Louisville
- Maternal and Child Health
- LGBT Health Equity Initiatives
- Asthma Initiative
- Diabetes Programming
- Suicide Prevention and Awareness
- Louisville Health Advisory Board
- United Community
- Inform COVID-19 plans and equity briefs with voice of community partners
- Check plans against COVID-safe service delivery learnings of PHW colleague
- Recommended creation of Community Advisory Board for BBBT
- Completed 12 Issue Briefs on equity issues related to pandemic, response, and recovery

Performance Management

- Public Health Accreditation
- Community Health Needs Assessment
- Community Health Improvement Plan(Healthy Louisville 2025)
- Population Health Surveillance and Research
- Strategic Planning
- Quality Improvement
- Performance Management
- Informatics and Data Management
- Data Requests
- Program Evaluation
- Biostatistics
- Developing data/narrative around COVID-19 and health equity to share with the public
- Contributed research to IMT Medical
- Contributed staff to IMT Planning
- Assisted in the development of the public health expansion plan, including the RFP for contact tracing
- Recommended creation of Equity Officer position within IMT

Health Operations

Environmental Health

- Food Safety and Protection
- Public Facilities
- Onsite Sewage
- Wastewater
- Mosquito Control
- Hazmat Response
- Childhood Lead Poisoning Prevention
- COVID-19 complaint investigations

Emergency Preparedness

- Public Health Preparedness
- Hospital Preparedness
- Cities Readiness Initiative
- Medical Reserve Corps

Laboratory

- STD testing
- Urine drug screen
- Tuberculosis testing
- Mosquito testing
- Water testing
- Blood lead testing
- COVID-19 first responder testing

Administration

- Administration
- Human Resources
- Communications
- IT
- Grants

Health Services

Communicable Diseases

- Disease surveillance
- Immunizations clinics for reduction of vaccine-preventable illness
- **COVID-19: case investigation, contact tracing management, isolation and quarantine essential needs linkage**

Tuberculosis (TB) Clinic

- TB screening and testing
- Treatment of Latent TB Infection (LTBI) and TB Cases for Region
- Contact Investigation and Case Management for TB Cases

Specialty Clinic

- STD and HIV testing
- STD counseling

MORE Center

- Medication for Opioid Use disorder/Medication Assisted Treatment (Methadone)
- Addiction counseling services
- Referral for social service assistance

Health Services, Cont.

Syringe Exchange Program

- Reducing infection through education and testing for HIV and Hepatitis C

Cancer Screening

- Identify uninsured women with abnormal breast and cervical cancer screen (KWCSP)

HIV Prevention, Surveillance, and Linkage to Care

- Provide priority population-focused education and testing for HIV in community
- Receive new HIV positive reports from healthcare providers and laboratories
- Link patients with newly-diagnosed HIV and lost-to-follow up HIV-positive individuals and with HIV treatment providers

WIC Program

- Nutritional counseling and medical nutritional therapy
- Breastfeeding counseling and support
- Supplemental food benefits
- **COVID19: increased participation with telephonic visits**

Healthy Start

- Reduce infant mortality rates in specific Louisville Zip Codes (40202, 40203, 40208, 40210, 40211, 40212)
- Promote consistent prenatal care throughout pregnancy and infant care

Health Impact Pyramid

