



## ***PARKS & SUSTAINABILITY COMMITTEE***

*December 9, 2021*



LOUISVILLE  
PARKS  
AND RECREATION



## ***OVERARCHING PROJECT GOAL***

*Develop an equitable and transparent investment plan for  
Louisville Metro Area Parks System*



## *KEY PRINCIPLES OF THIS WORK*

- *Equitable access*
- *Equitable investments*
- *Work led by Louisvillians*
- *Transparent decision making*
- *Coordinate with & convene local community*
- *Work closely with Metro Parks and partners*



# AGENDA

---

## Project Updates

- Interviews
- Relationship to Prior Plans & Studies

## Initial Research & Mapping

- Access to Parks vs. Access to Green

## Shaping the Strategy

- *Community Context*
- *Access + Gaps in the System*
- *Park Conditions + Assets*

## Next Steps

- *Deep dive on park data*
- *Getting organized for community engagement*



# LOCAL PROJECT TEAM

---

## *Local Team Leading and Guiding Project*

- *Abdi Farhan, Somali Community of Louisville*
- *Jecorey Arthur, Louisville Metro Council*
- *Deborah Bilitski, Waterfront Park*
- *Margaret Brosko, Metro Parks*
- *Freddie Brown, YMCA*
- *BJ Bunton, JCPS*
- *Emilie Dyer, Americana*
- *Cindi Fowler, Louisville Metro Council*
- *Layla George, Olmsted Parks Conservancy*
- *Steve Haag, Louisville Metro Council*
- *Mark Hohmann, Goodwill Industries of KY*
- *Amos Izerimana, Louisville Metro*
- *Scott Kiefer, Parks Alliance of Louisville*
- *Michael Meeks, Louisville Metro*
- *Lopa Mehrotra, Greater Louisville Project*
- *Brooke Pardue, Parks Alliance of Louisville*
- *Lynn Rippy, Wilderness Louisville/Youth Build*
- *Ricky Santiago, Louisville Metro*
- *Dr. Ted Smith, Envirome Institute/UofL*
- *Cindi Sullivan, TreesLouisville*
- *Keith Talley, Louisville Metro*
- *Nicole Ward, Outdoor Afro – Louisville*
- *Louisville Sports Commission*



# INTERVIEWS TO DATE

---

*33 interviews... and counting*

## METRO GOVERNMENT

- *Parks & Recreation*
- *Chief of Community Building*
- *Office of Management & Budget*
- *Center for Health Equity*
- *Louisville Forward*
- *Office of Community Development*
- *Public Works (Louisville Loop)*
- *Louisville Free Public Library*
- *Metropolitan Sewer District*
- *Air Pollution Control District*
- *Office of Equity*
- *Office for Globalization*

## COMMUNITY PARTNERS

- *Parks Alliance of Louisville*
- *Olmsted Parks Conservancy*
- *Wilderness Louisville*
- *Trees Louisville*
- *Waterfront Park*
- *21<sup>st</sup> Century Parks*
- *River Heritage Conservancy*
- *Louisville Sports Commission*
- *Urban Design Studio at University of Louisville*
- *Goodwill Industries*
- *YouthBuild*
- *Interdenominational Ministerial Coalition*
- *Applied Civics*
- *Brightside Foundation*

# PRIOR PLANS & STUDIES

---

## METRO-WIDE

- 2020 Greenhouse Gas Emissions Reduction Plan
- 2020 Prepare Louisville: Building a Climate Resilient City
- 2020 Complete Streets Design Guide
- 2018 Plan 2040 Comprehensive Plan
- 2017 Health Equity Report
- 2016 Urban Heat Management Study
- 2015 Racial Equity Toolkit
- 2015 Urban Tree Canopy Assessment
- 2015 JCPS Comprehensive Infrastructure Assessment
- 2013 Sustain Louisville
- 2010 Bike Master Plan
- 2010 Pedestrian Master Plan
- 2009 Public Art Master Plan

## PARK SYSTEM MASTER PLANS

- 2017 Naturalization Study
- 2013 Louisville Loop
- 2012 Southwest Greenways
- 2009 Jefferson Memorial Forest
- 2008 21<sup>st</sup> Century Parks
  - Updated in 2016
- 1994 Olmsted Parks & Parkways

20+

INDIVIDUAL  
PARK  
MASTER PLANS

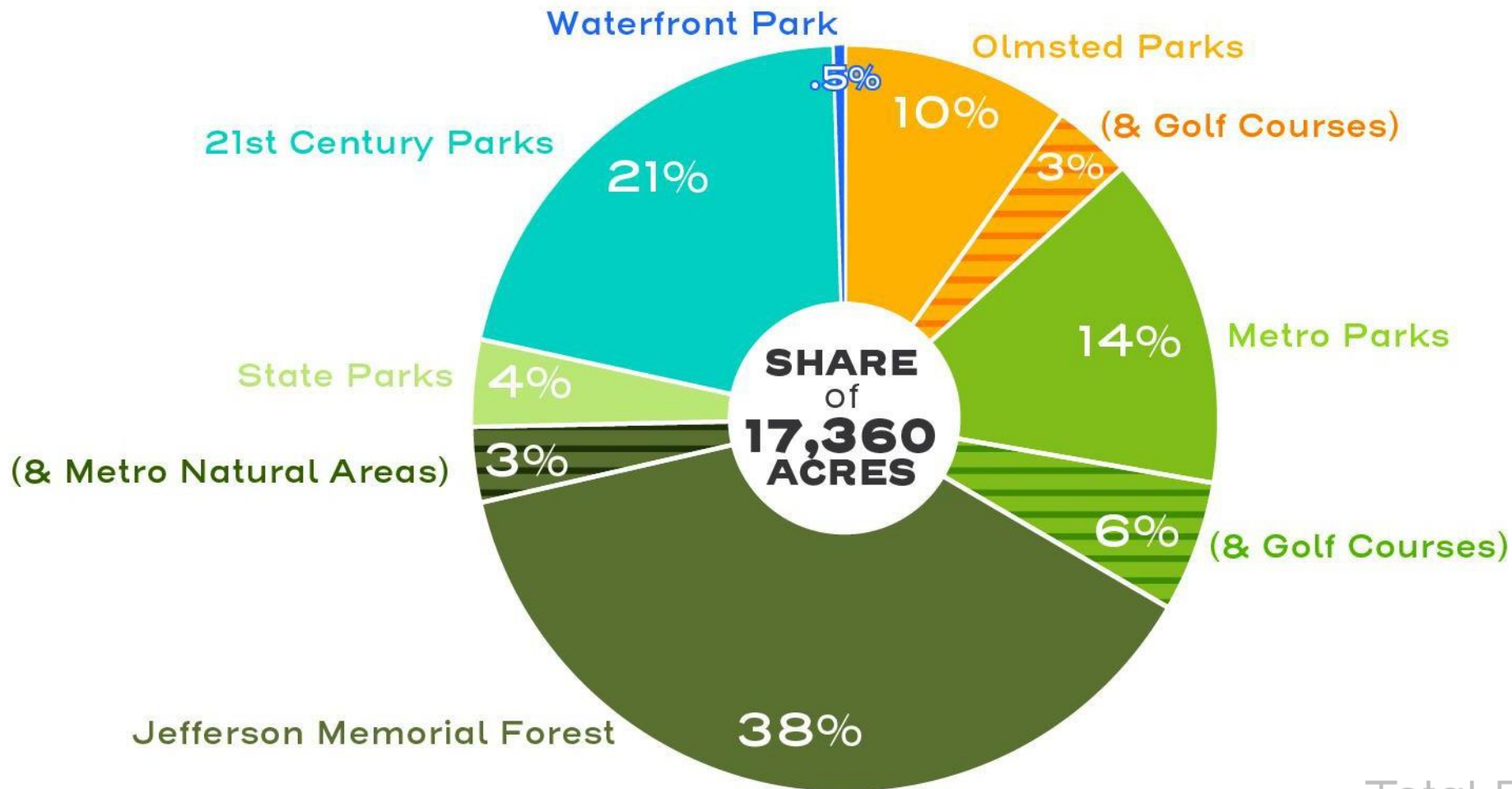
36

NEIGHBORHOOD  
PLANS

**LOUISVILLE / JEFFERSON COUNTY'S  
PARK SYSTEM**



## PARKS & OPEN SPACE BY CLASSIFICATION

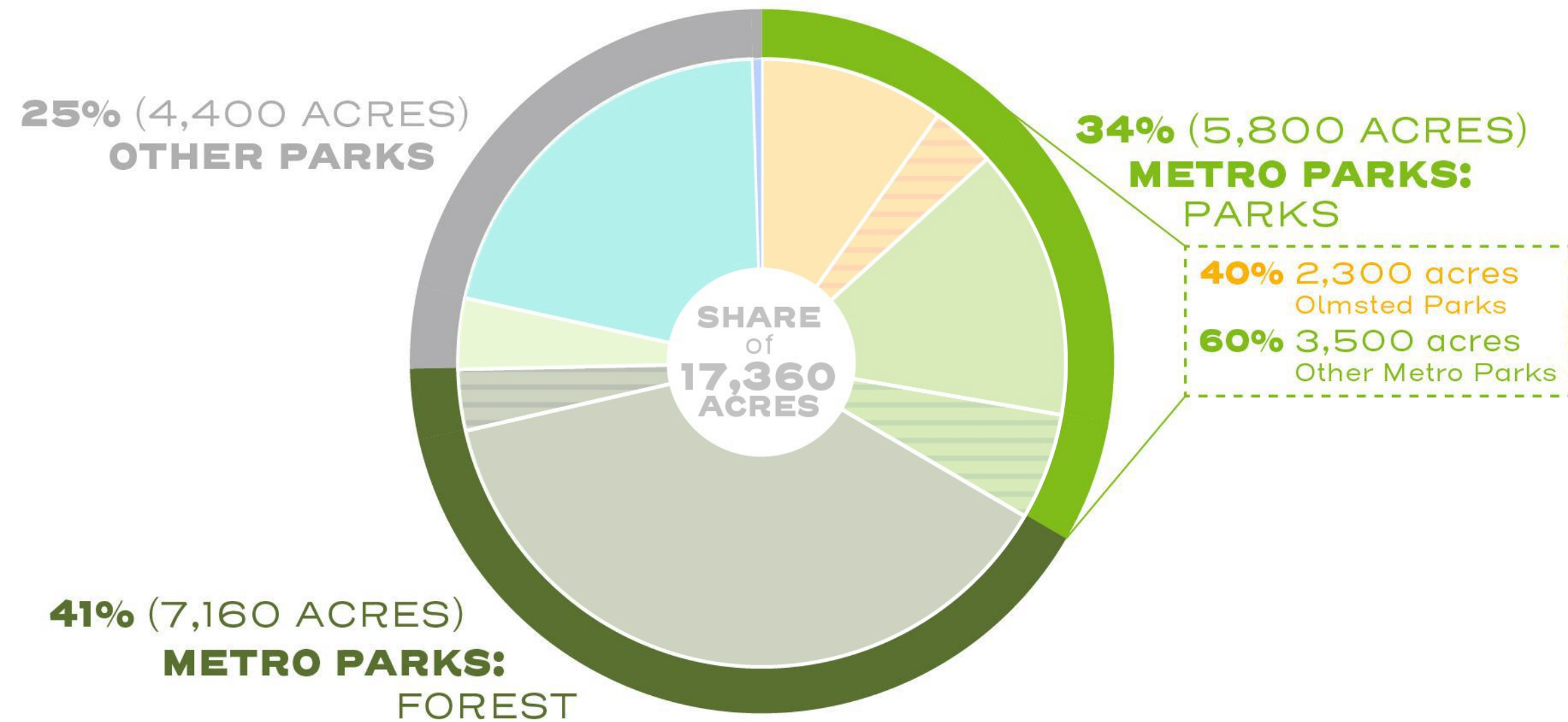


**PLUS:**  
4,566  
additional acres  
of Natural Areas  
(not in parks or  
cemeteries)  
and  
1,545  
additional acres  
of Cemeteries  
(outside of parks)

---

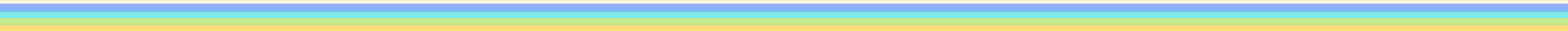
**23,500 ACRES**  
Total Parks & Open Space

# PARKS & OPEN SPACE BY CLASSIFICATION



*DIGGING INTO DATA ON*

# *PARKS + REC SITES*

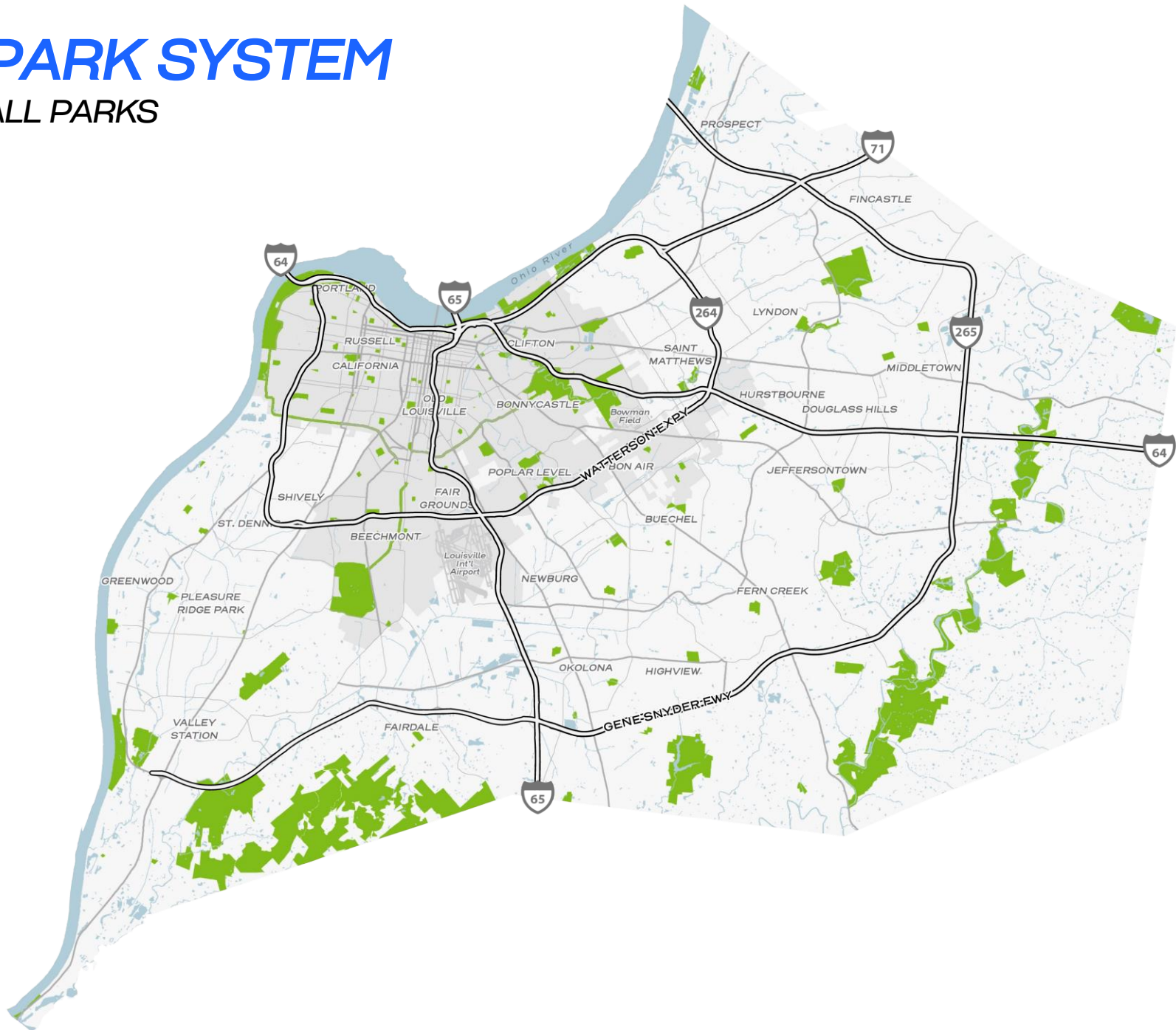


# LET'S LOOK AT ACCESS TO OPEN SPACE

- *How do we weigh proximity and access to parks versus green space?*
- *What role do schools grounds play?*
- *What about connectivity?*
- *And yards or private green space?*

# PARK SYSTEM

ALL PARKS



## PARK SYSTEM

LOJIC, INTERFACE STUDIO

- Highway
- Major Roadway
- Water
- Urban Service Boundary
- Jefferson County
- Metro and Publicly Accessible Parks

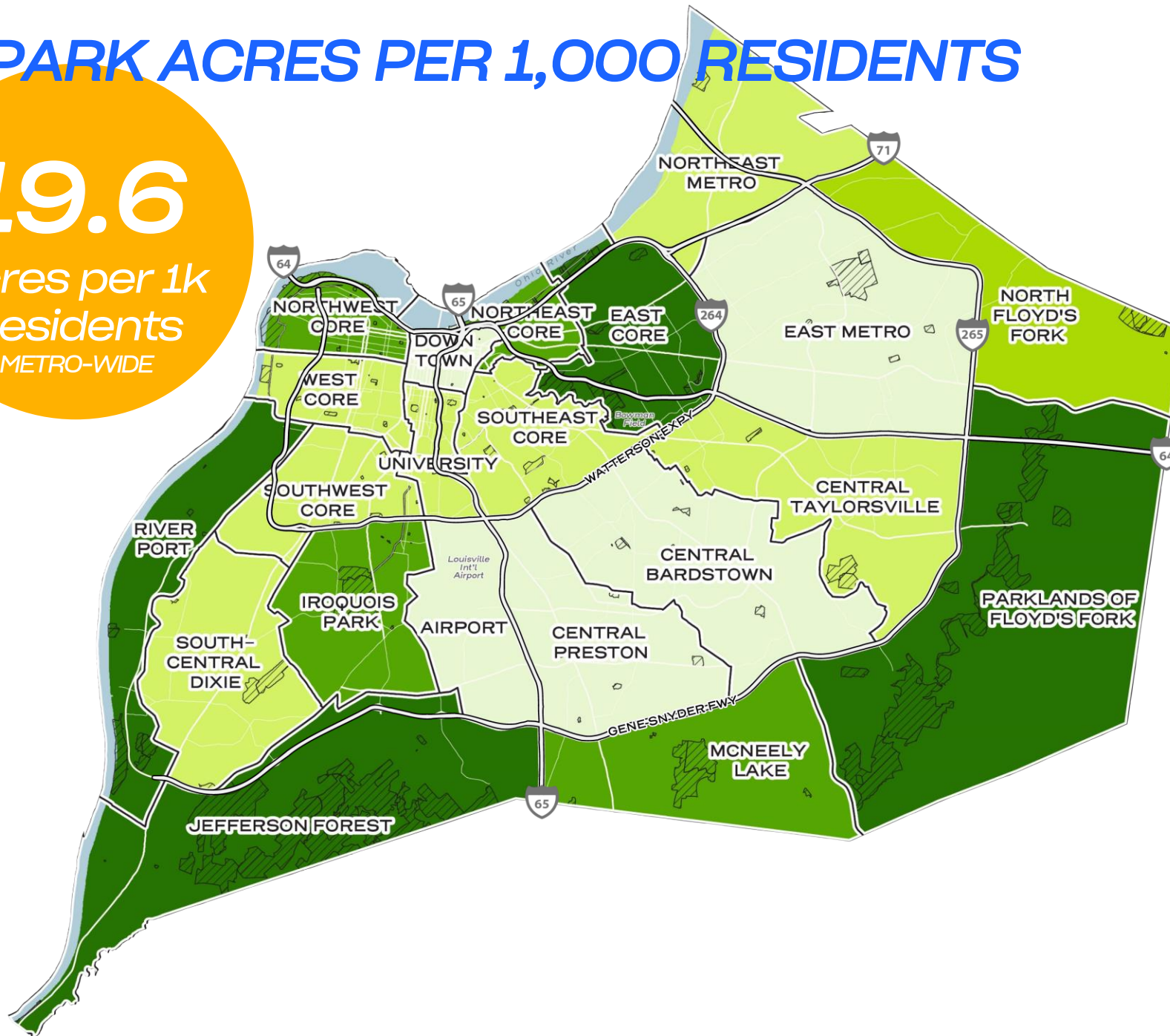
17,360  
ACRES  
METRO-WIDE



# PARK ACRES PER 1,000 RESIDENTS

19.6

Acres per 1k  
Residents  
METRO-WIDE



## PARK ACRES PER 1,000 RESIDENTS

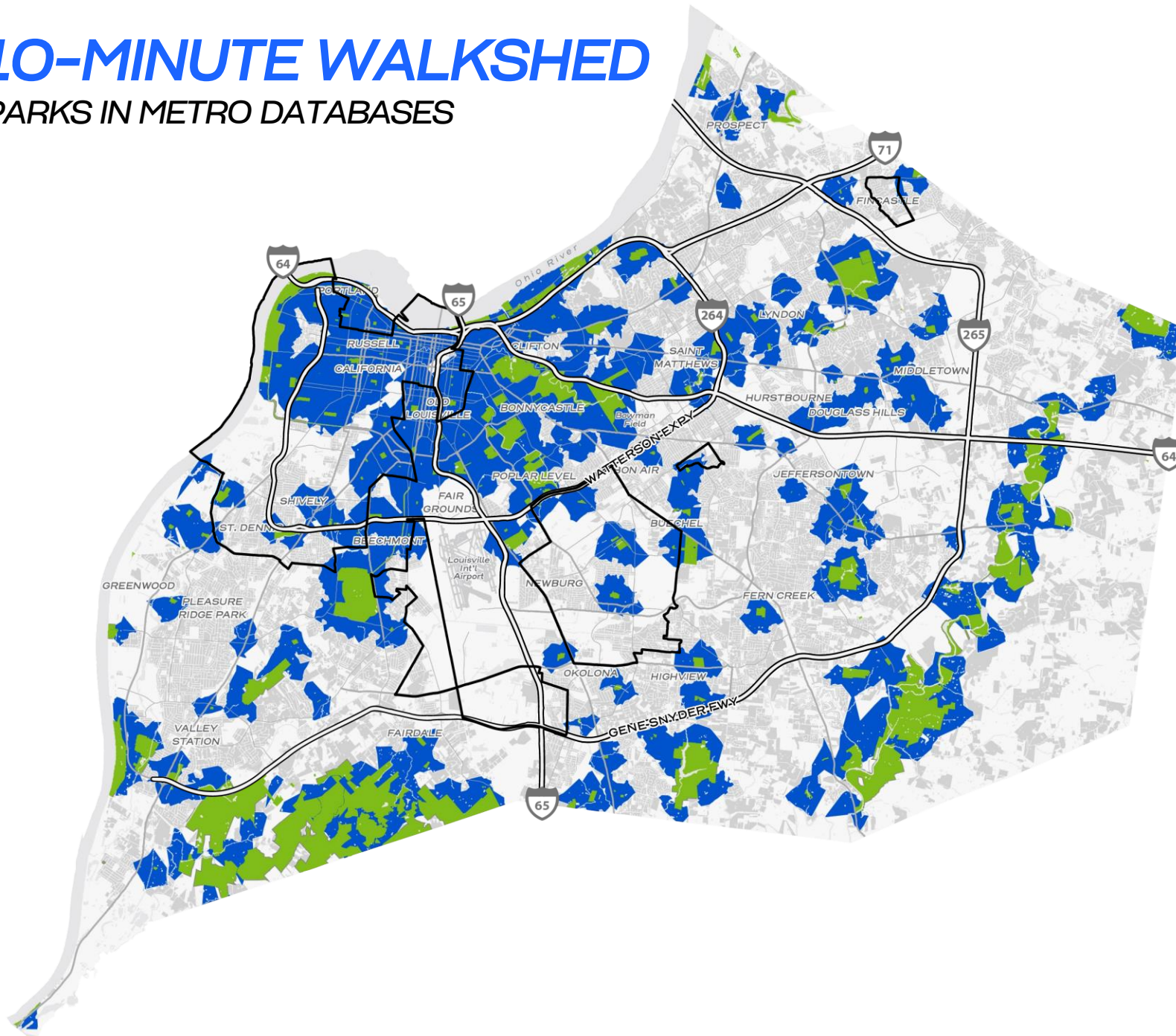
LOJIC, INTERFACE STUDIO



COMMUNITY AREA	ACRES/ 1,000 PPL
Jefferson Forest	314.8
Parklands of Floyds Fork	262.9
Riverport	26.7
East Core	19.5
McNeely Lake	14.0
Northeast Core	13.9
Northwest Core	13.4
Iroquois Park	12.5
North Floyds Fork	5.5
West Core	4.9
Southeast Core	4.4
Northeast Metro	4.1
South-Central Dixie	3.6
Southwest Core	2.6
Central Taylorsville	2.5
University	2.5
East Metro	1.8
Central Preston	1.7
Central Bardstown	1.1
Downtown	0.6
Airport	0.0

# 10-MINUTE WALKSHED

## PARKS IN METRO DATABASES



### 10-MINUTE WALKSHED

INTERFACE STUDIO

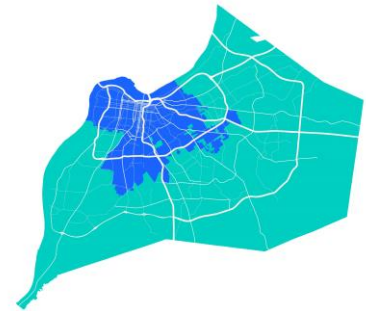
#### Metro and Publicly Accessible Parks

*Includes:*

**Metro Parks & Parks in Other Municipalities**  
(excluding sites that are entirely parkways,  
greenways, and trails),  
**Publicly Accessible Natural Areas,**  
**Golf Courses, and**  
**Cemeteries** (excluding sites less than one acre)

#### Areas Within a 10-Minute Walk of Metro Parks

#### Residential Parcels Further Than a 10-Minute Walk

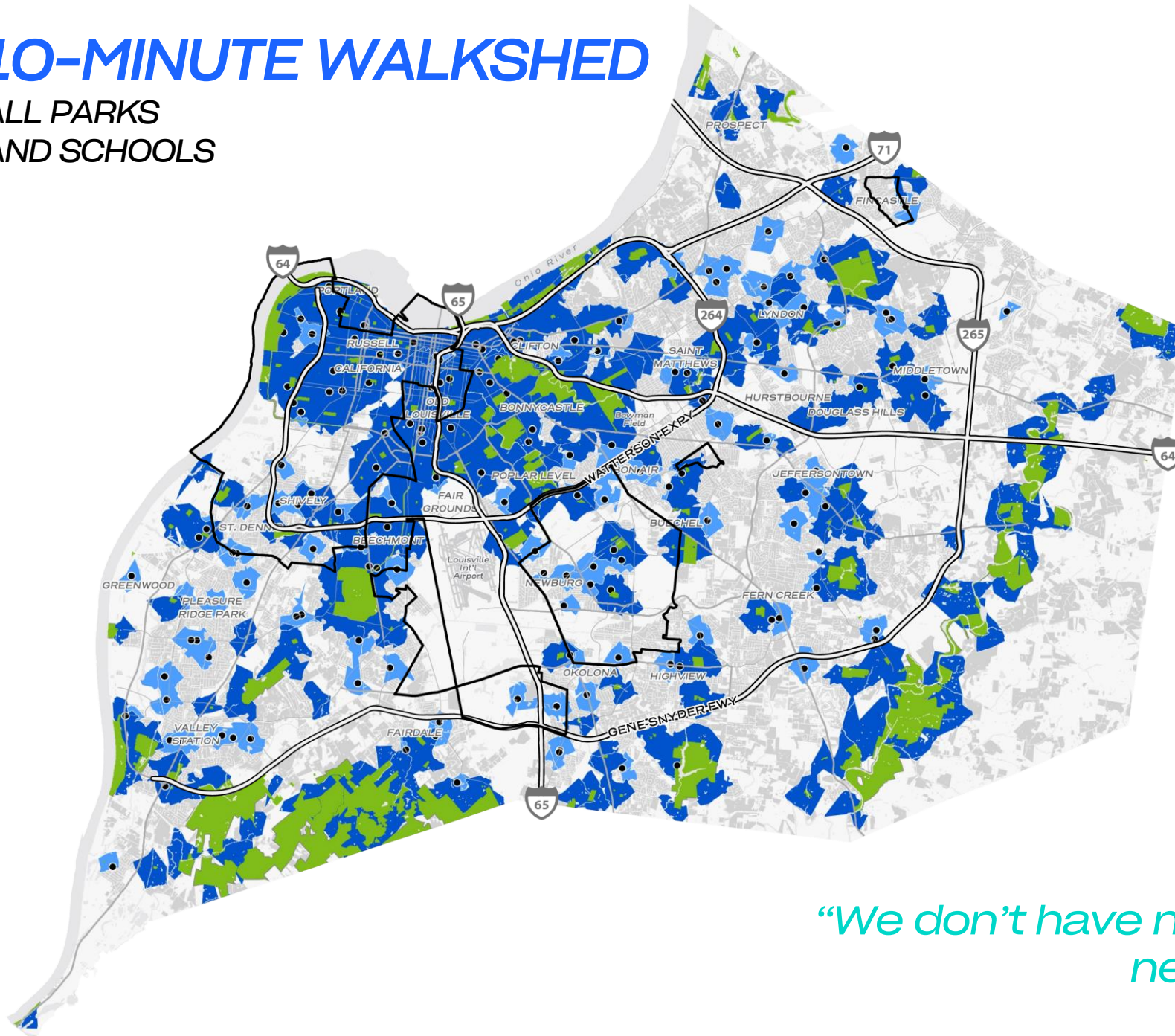


*In the Urban  
Service Boundary,  
the majority of  
residents are within  
a 10-minute walk of  
a park.*



# 10-MINUTE WALKSHED

ALL PARKS  
AND SCHOOLS



## 10-MINUTE WALKSHED

INTERFACE STUDIO

### Metro and Publicly Accessible Parks

*Includes:*

**Metro Parks & Parks In Other Municipalities**  
(excluding sites that are entirely parkways,  
greenways, and trails),  
**Publicly Accessible Natural Areas,**  
**Golf Courses, and**  
**Cemeteries** (excluding sites less than one acre)

### Areas Within a 10-Minute Walk of Metro Parks

 Schools

### Additional Areas Within a 10-Minute Walk of Schools

### Residential Parcels Further Than a 10-Minute Walk

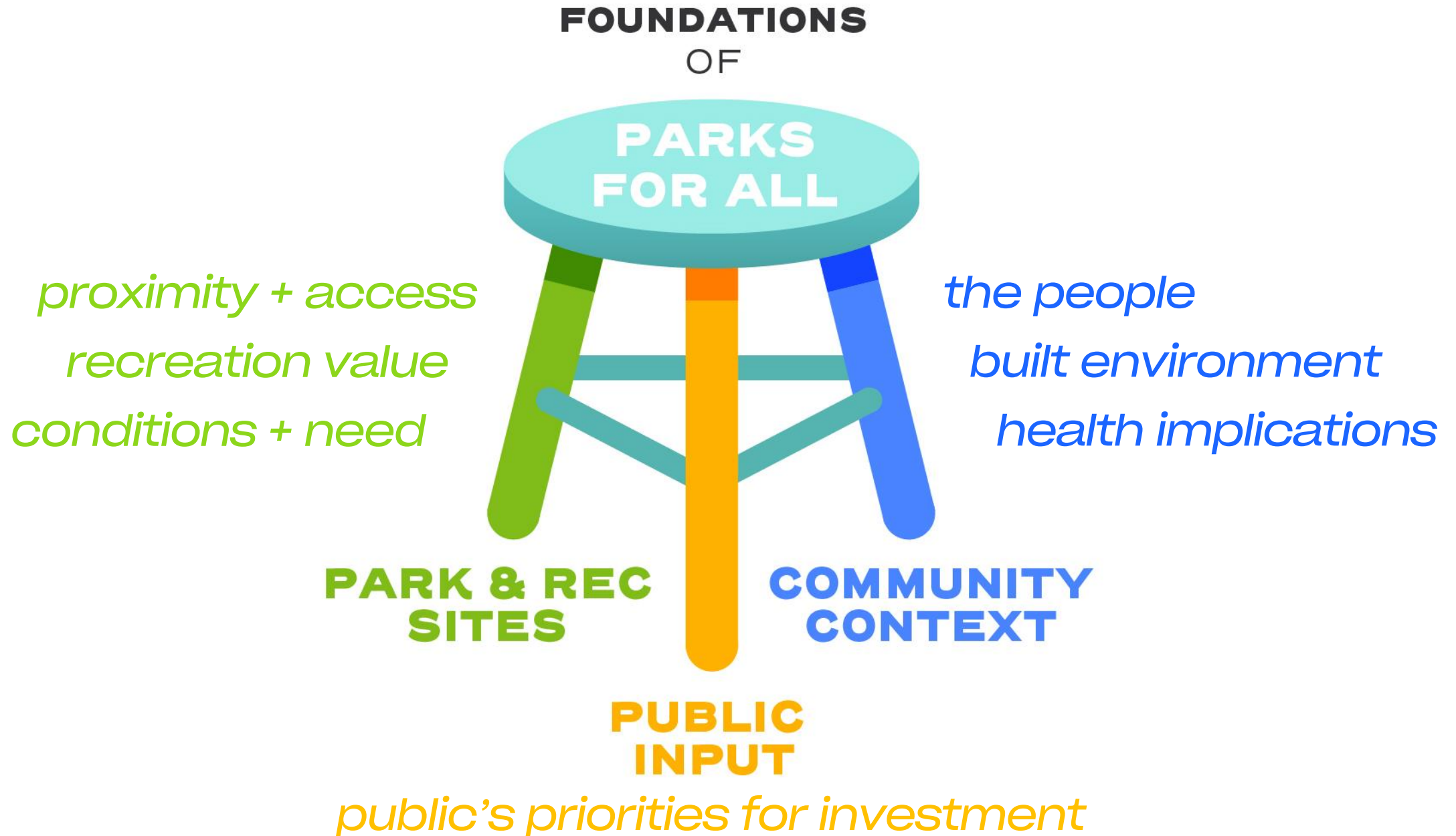
*“We don’t have neighborhood schools, but all  
neighborhoods have schools.”  
- local civic leader*

# SHAPING THE **STRATEGY**

*We will need to determine which datasets will shape Louisville's Equitable Park Investment Strategy.*

- Which data points should inform where and how to invest in existing parks?*
- Which data points should inform where to create new parks?*
- Which datasets should inform how to improve access to parks?*
- And how should Parks for All strike a balance between these different types of investments?*

# THREE TYPES OF DATA SHAPE THE STRATEGY





# *CUSTOMIZING THE* **STRATEGY**

*It's important to customize the datasets that will shape Louisville's Equitable Park Investment Strategy.*

- Data availability varies*
- Local context, issues, and priorities vary*
- Opportunity to refine and improve the methodology*

*LEARNING ABOUT LOUISVILLE METRO'S*

# ***COMMUNITY CONTEXT***

*UNDERSTANDING DIVERSITY & DISCREPANCIES ACROSS THE  
METRO AREA*

# *FIRST, FOCUS ON PEOPLE*

- *Population Density*
- *Race & Ethnicity*
- *Foreign Born Population*
- *Population Change*
- *Children 18 & Younger*
- *Adults 65 & Older*
- *Household Income*
- *Poverty*
- *Educational Attainment*
- *Homeowners*
- *Minority Homeowners*
- *Renters*
- *R/ECAP Areas*

# METRO-WIDE DASHBOARD

783,000

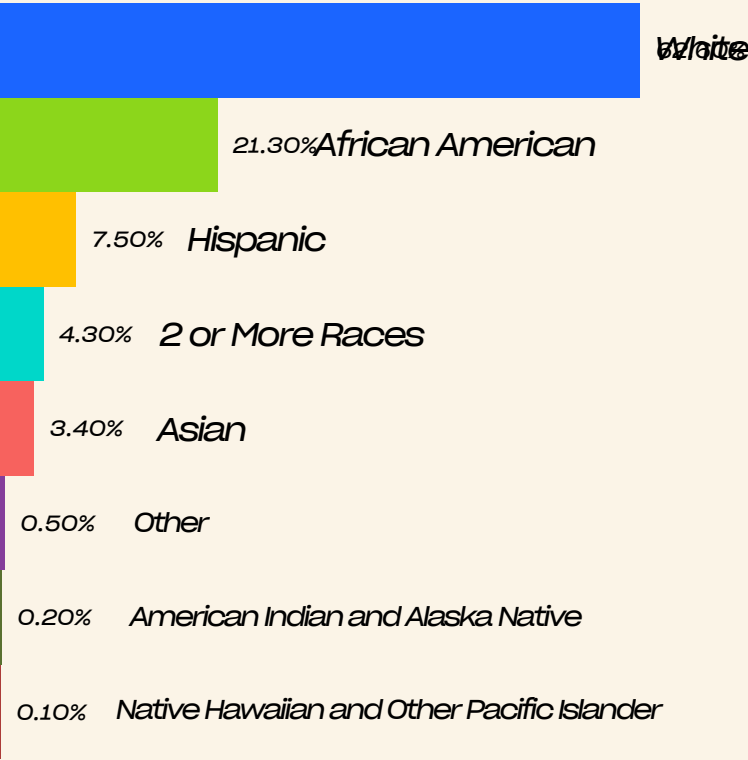
RESIDENTS  
2020 U.S. CENSUS

170,000+

YOUTH UNDER 18  
2019 ACS

120,000+

RESIDENTS 65 & OLDER  
2019 ACS



345,000

HOUSING UNITS  
2019 ACS

67%

SINGLE FAMILY HOMES  
2019 ACS

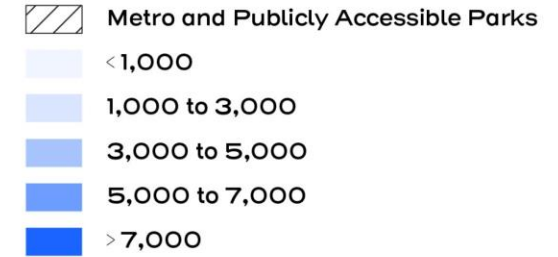
\$56,000

MEDIAN HOUSEHOLD  
INCOME  
2019 ACS

# POPULATION DENSITY

## POPULATION DENSITY PER SQUARE MILE

2019 ACS, U.S. CENSUS



Census Tracts where 50%+ residents are POC

**2,000**

AVERAGE  
POPULATION  
DENSITY PER  
SQUARE MILE  
METRO-WIDE

**4,600**

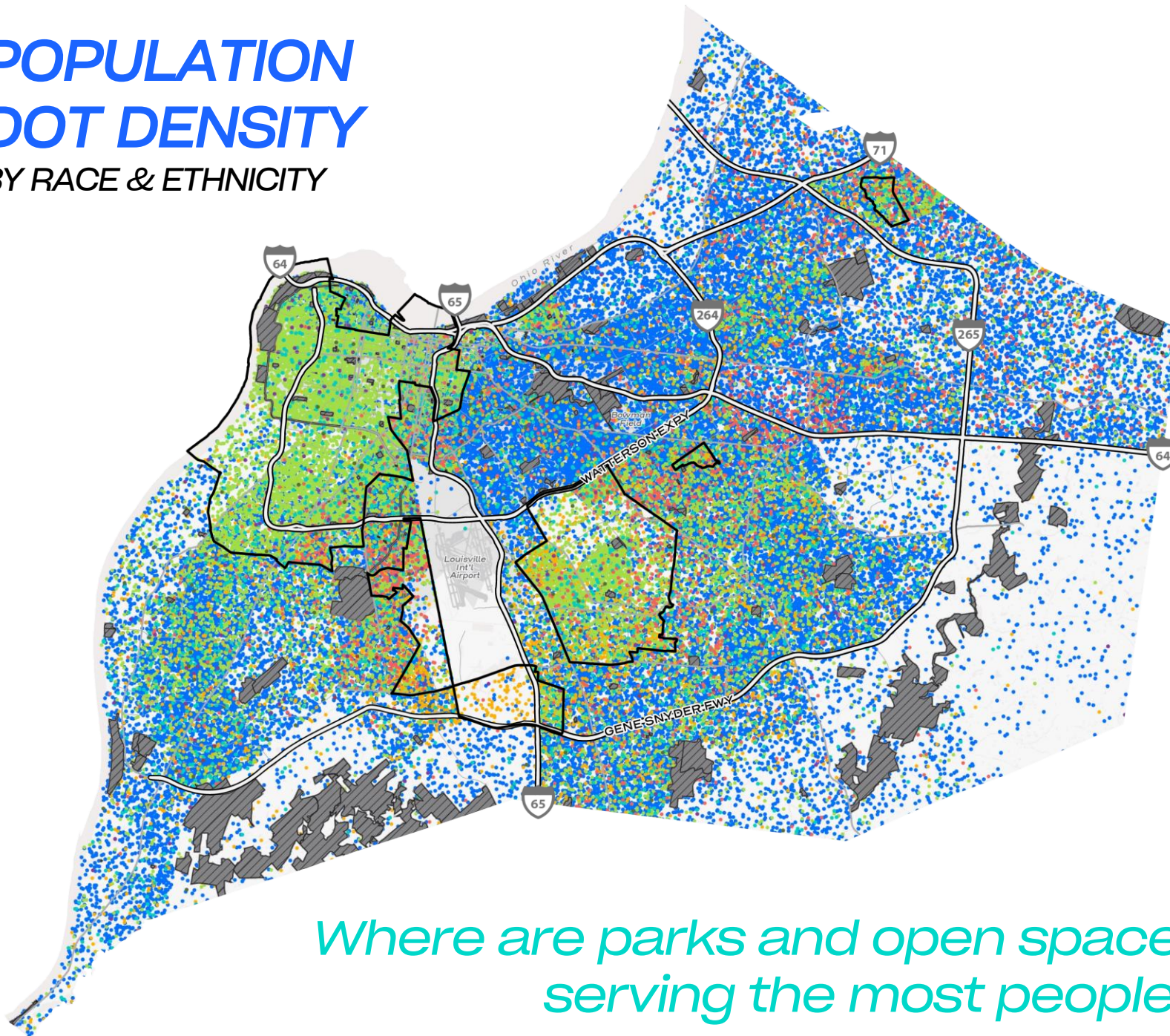
MAJORITY MINORITY  
AREAS

Where are parks and open spaces  
serving the most people?



# POPULATION DOT DENSITY

BY RACE & ETHNICITY



## RACE & ETHNICITY

2020 U.S. CENSUS

- White
- African American
- Hispanic
- Two or More Races
- Asian
- Other
- American Indian and Alaska Native
- Native Hawaiian and Pacific Islander

1 Dot = 10 Residents

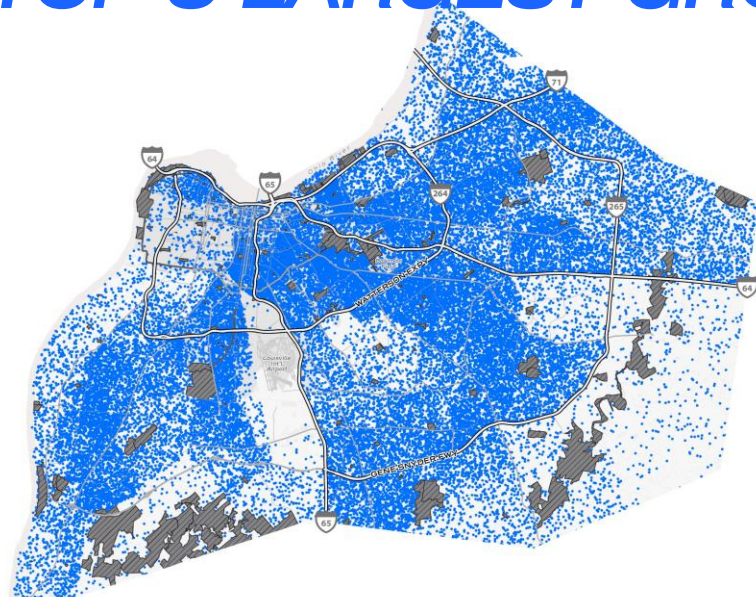
**37%**

OF POPULATION  
IDENTIFIES AS  
MINORITY  
METRO-WIDE

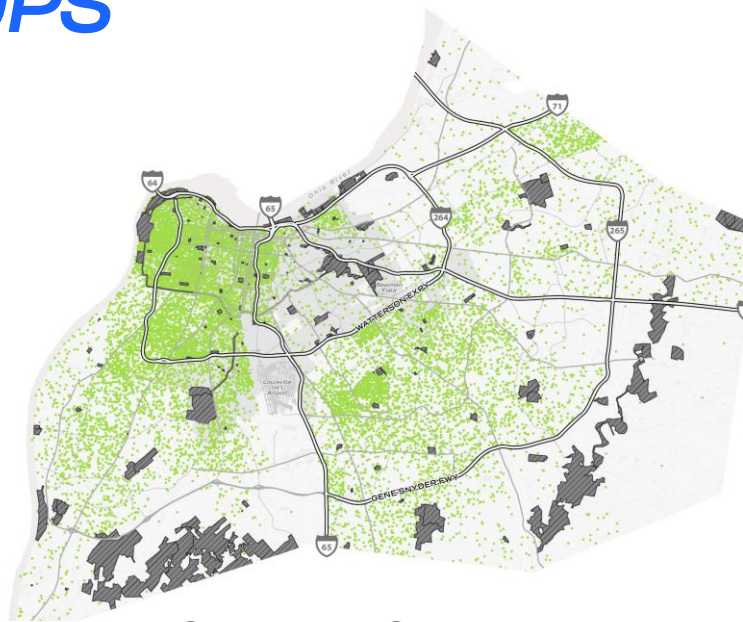
*Where are parks and open spaces  
serving the most people?*



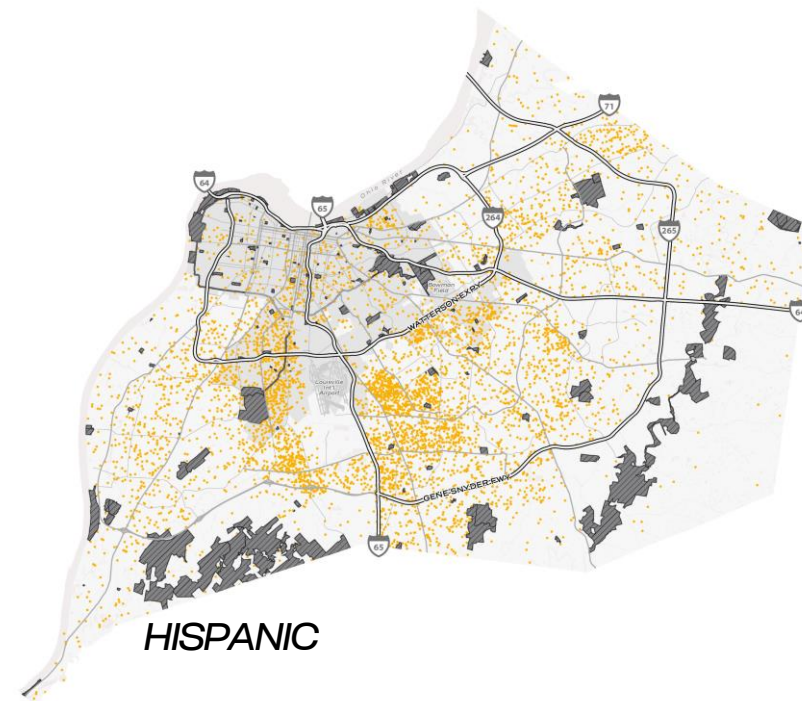
# TOP 5 LARGEST GROUPS



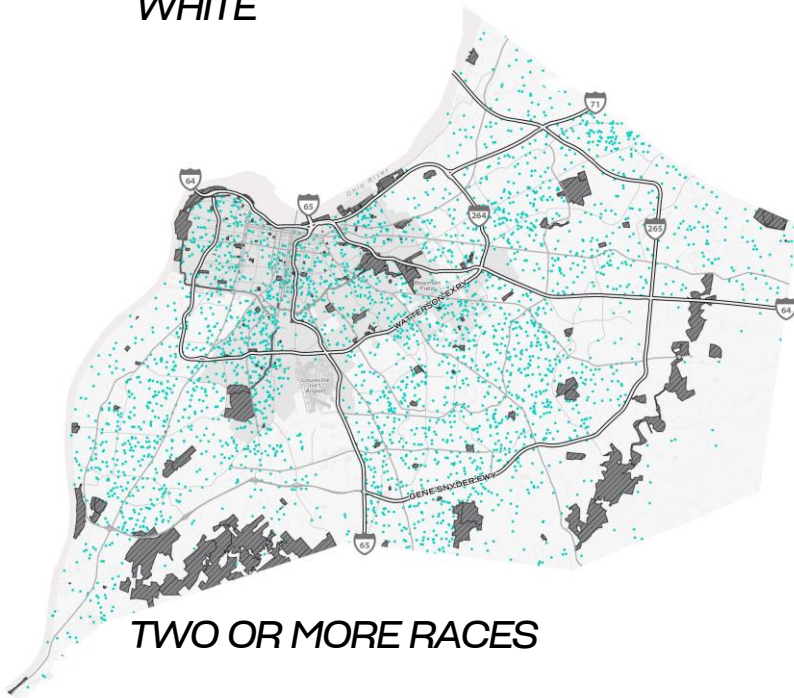
WHITE



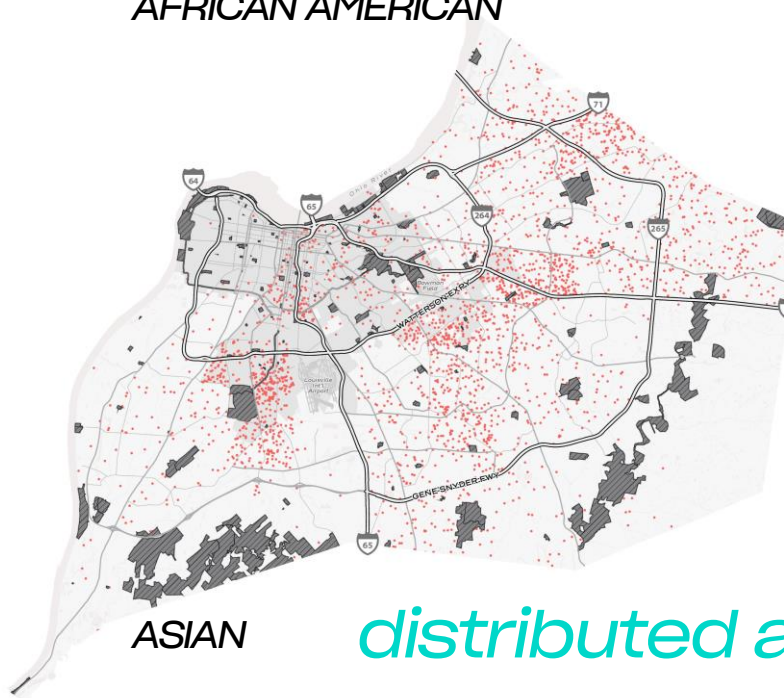
AFRICAN AMERICAN



HISPANIC



TWO OR MORE RACES

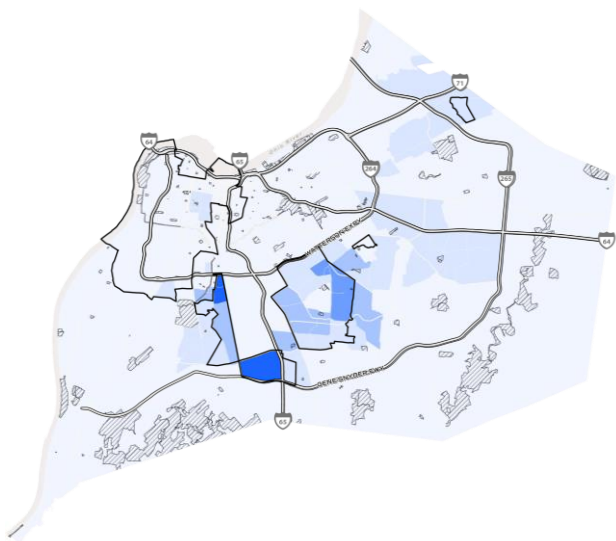


ASIAN

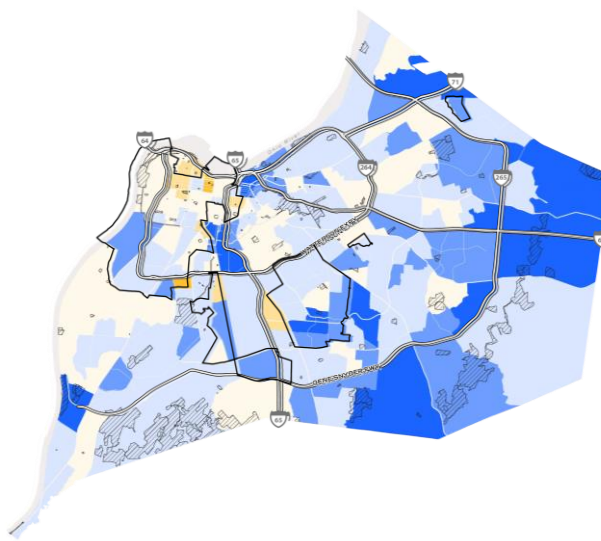
How is the population distributed across the metro area?



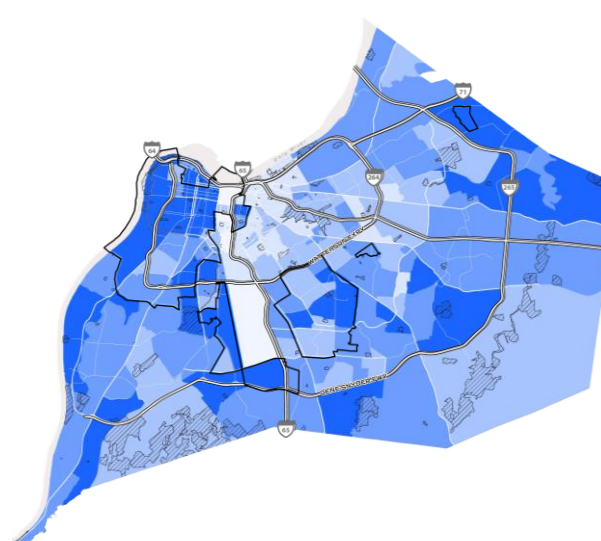
# DEMOGRAPHIC DATA



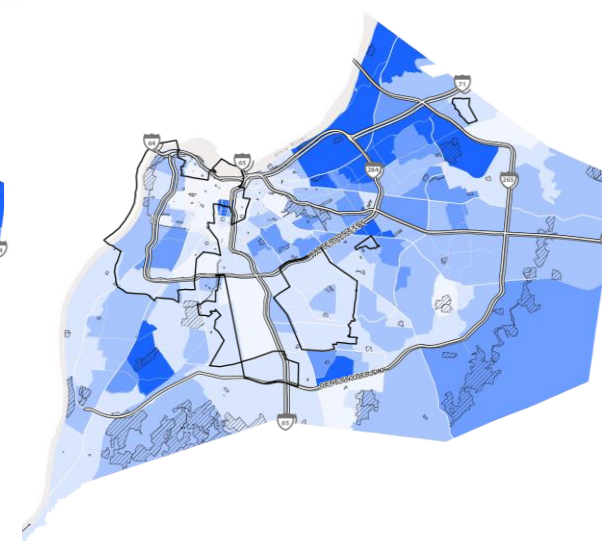
*Foreign Born Population*



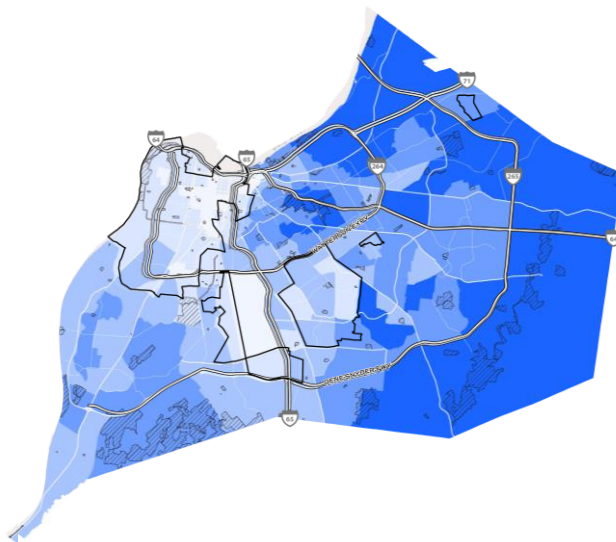
*Population Change*



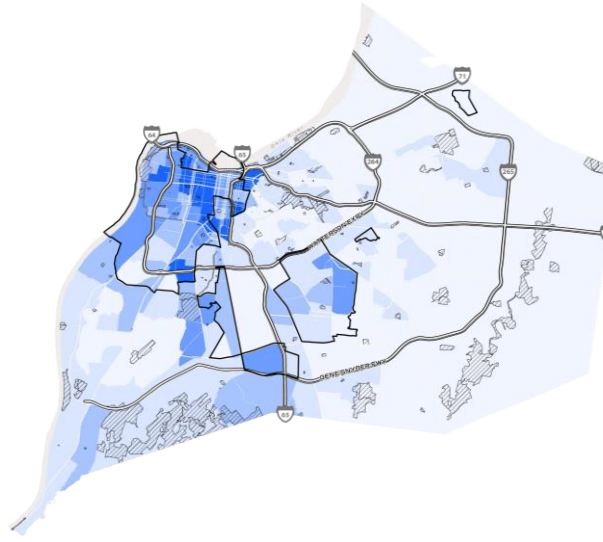
*Population Under 18*



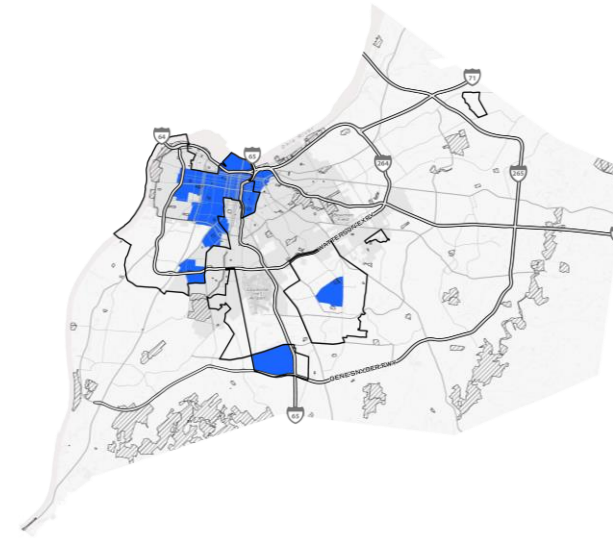
*Population Over 65*



*Median HH Income*



*Poverty Rates*

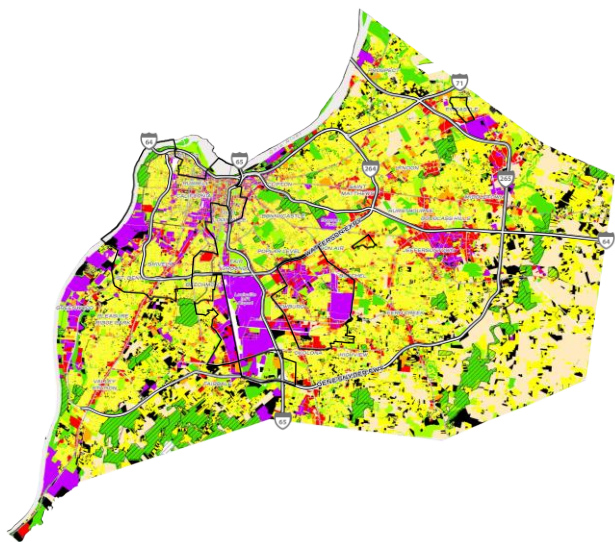


*Racially/Ethnically Concentrated Areas of Poverty*

# ***THEN, CONSIDER THE BUILT ENVIRONMENT***

- *Land Use*
- *Impervious Surfaces*
- *Average Temperatures*
- *Tree Canopy*
- *Flood Risk*

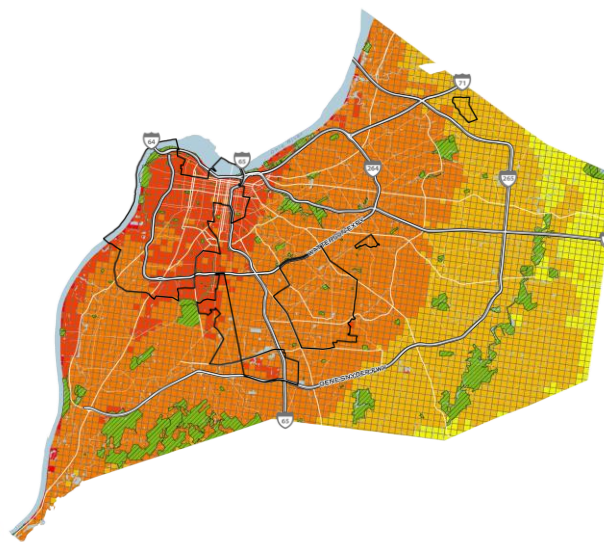
# *BUILT ENVIRONMENT DATA*



*Land Use*



*Impervious Surfaces*

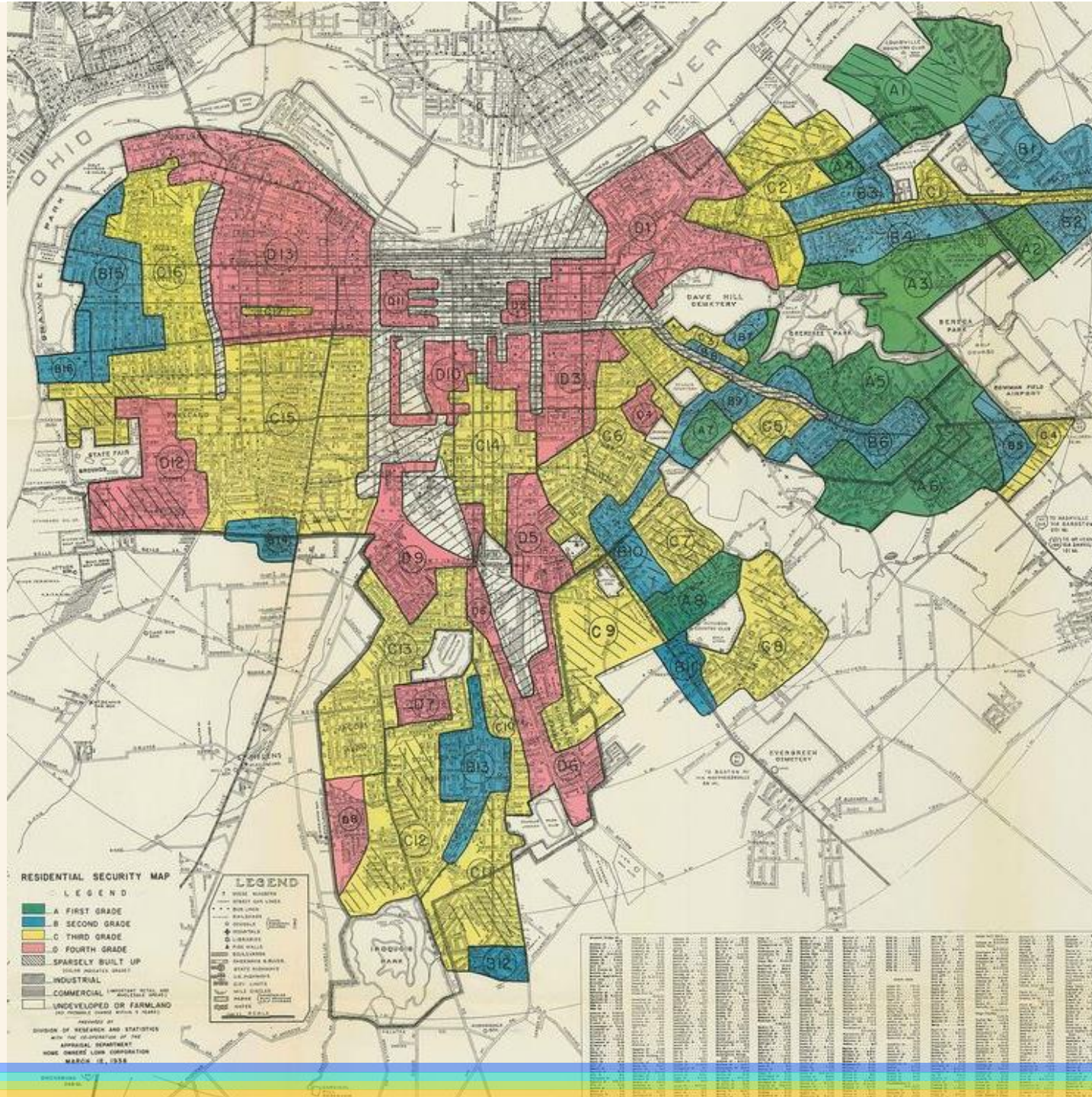


*Average Temperatures*



*Tree Canopy*





“In redlined communities, air quality is worse, there are fewer trees, it’s hotter.

The pressure on parks is greater there than elsewhere from a social as well as environmental perspective...

Everything happens in parks - parties, stormwater, trees.”

- parks advocate



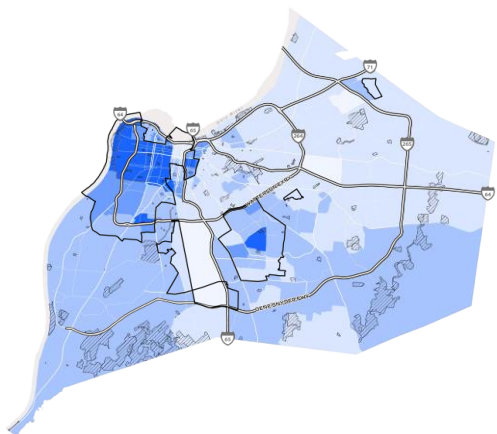


# *AS WELL AS THE HEALTH + WELLNESS IMPLICATIONS*

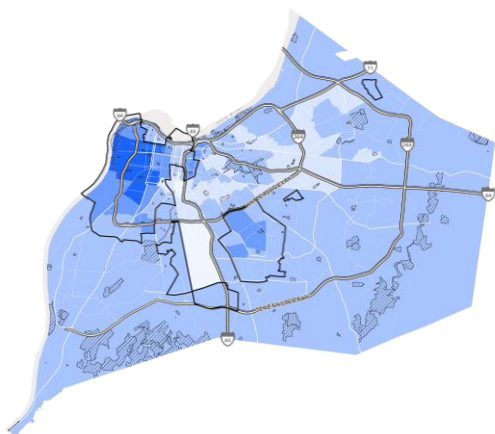
- *Asthma*
- *Obesity*
- *Diabetes*
- *Depression*
- *Violent Crime*



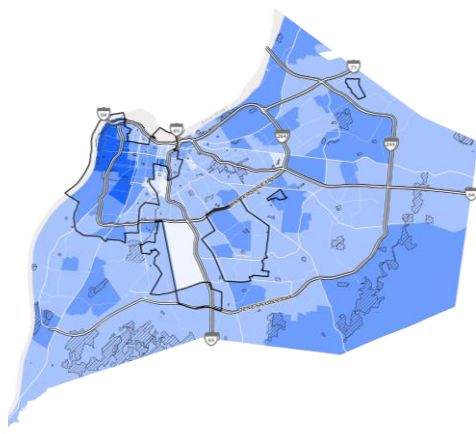
# HEALTH & WELLNESS INDICATORS



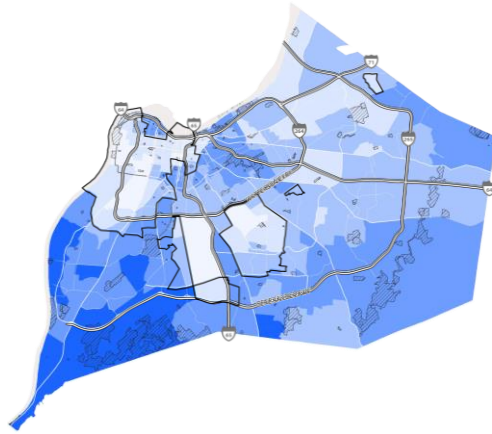
Asthma Rates



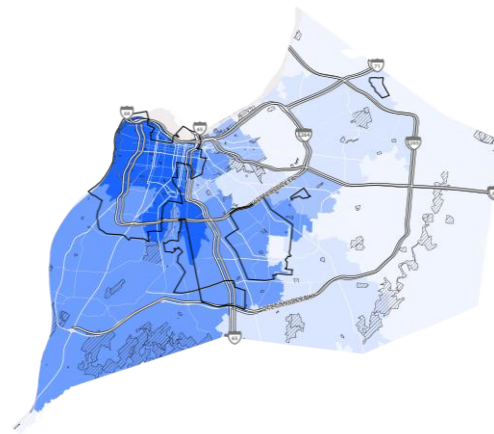
Obesity Rates



Diabetes Rates



Depression Rates



Violent Crime Rates

**11%**

OF RESIDENTS  
METRO-WIDE

**37%**

OF RESIDENTS  
METRO-WIDE

**41%**

MAJORITY  
MINORITY  
AREAS

**15%**

OF RESIDENTS  
METRO-WIDE

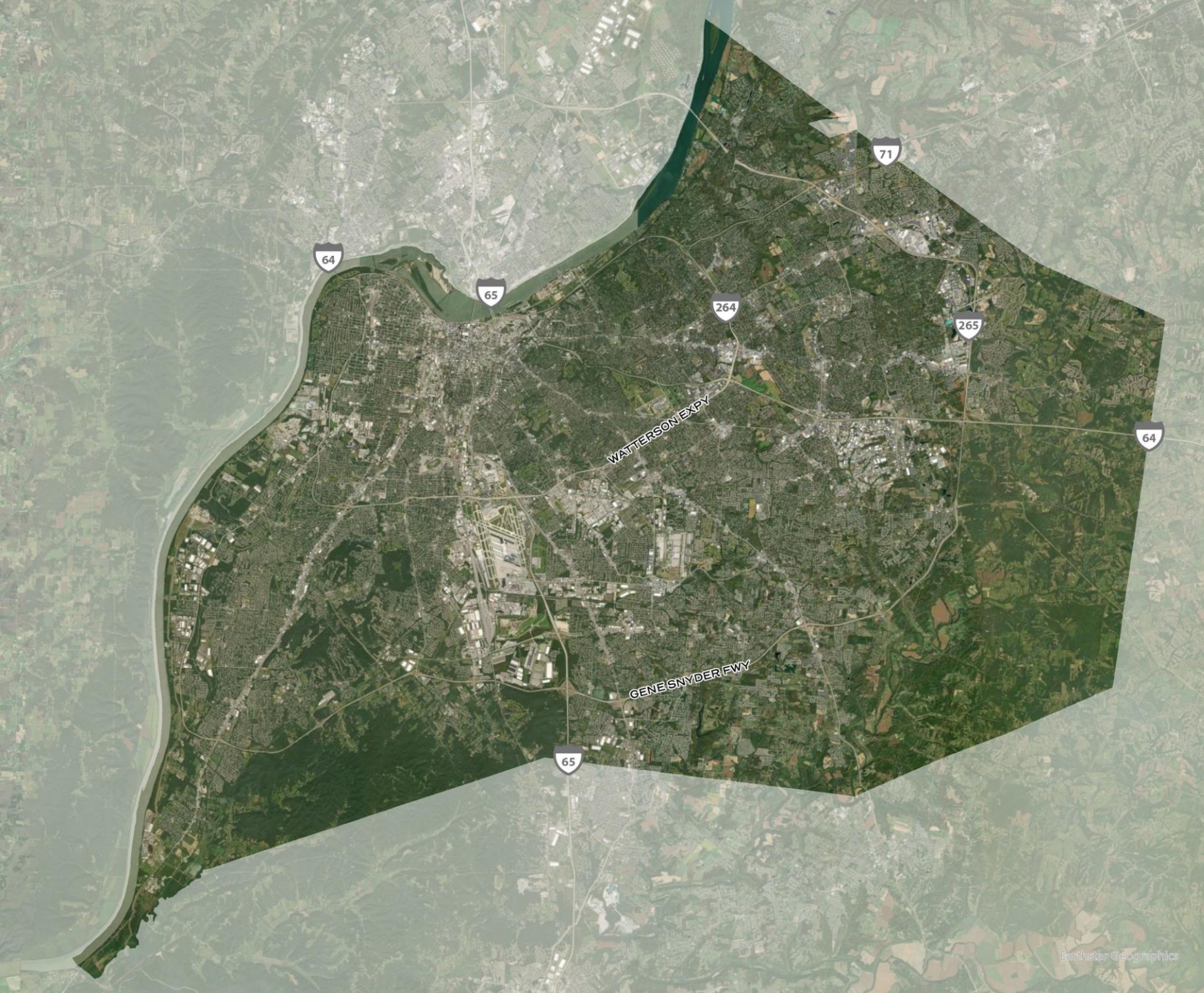
**24%**

OF RESIDENTS  
METRO-WIDE

**<1%**

OF VIOLENT CRIME  
OCCURRED IN PARKS  
METRO-WIDE  
2019-21





*We can't just think  
about **park** access...*

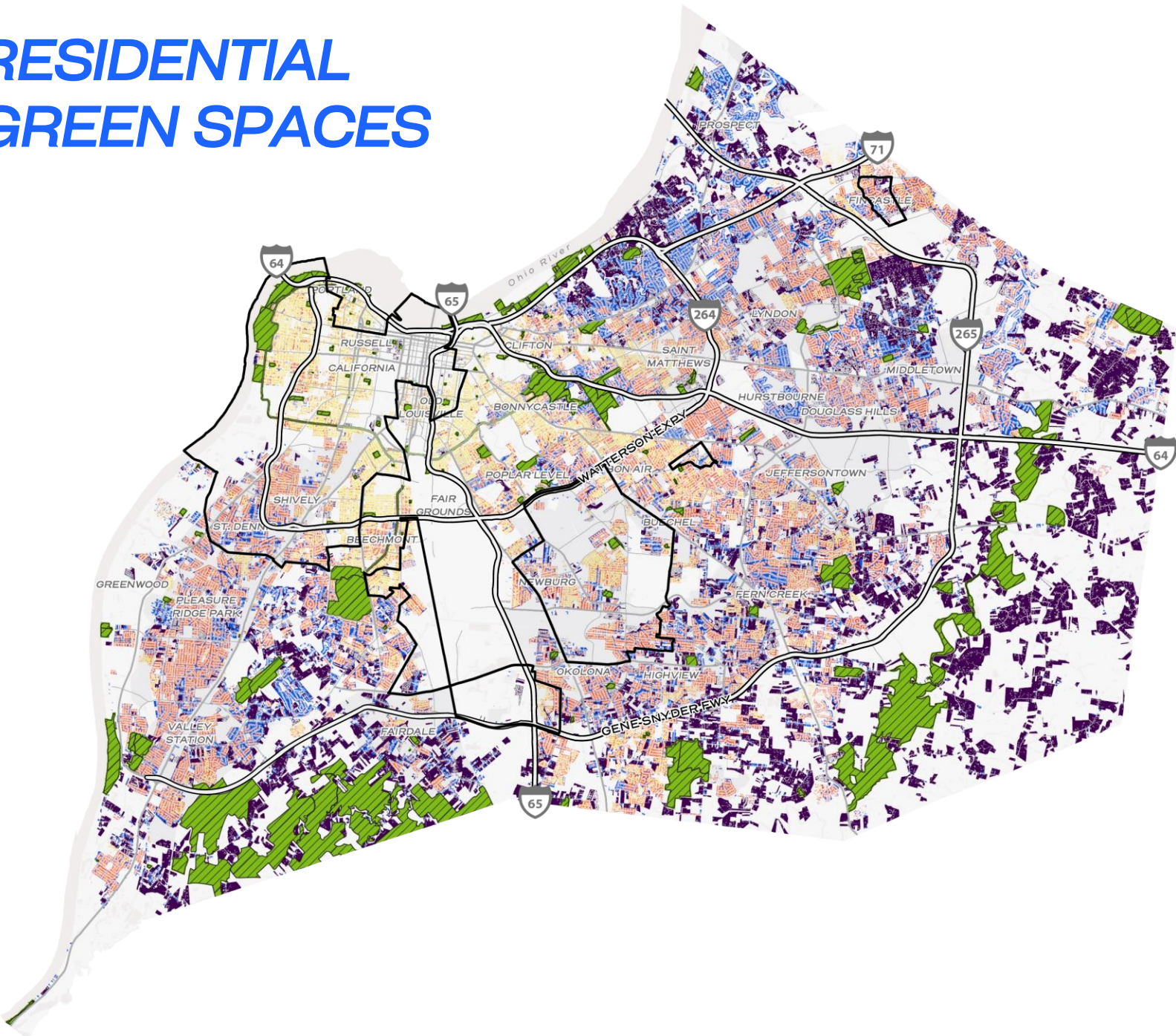
*We need to think  
more broadly about  
access to **green  
space**...*



# RESIDENTIAL GREEN SPACES

RESIDENTIAL YARD SPACE IN  
SQUARE FEET (SQFT)  
INTERFACE STUDIO

- Metro and Publicly Accessible Parks
- < 5,000
- 5,000 - 10,000
- 10,000 - 43,560
- > 43,560 (1 Acre)



# *NEXT WE'LL TACKLE PARK CONDITIONS + RECREATION VALUE*

- *How much investment has each park + rec site received over time?*
- *What is the condition of each park/community center?*
- *What about the assets at each site?*
  - *Which age groups do they serve?*
  - *And how well, based on their condition?*

# ***RATING PARK CONDITION + RECREATION VALUE***

*Metro Parks recently cataloged every amenity in every park,  
including:*

*Baseball Fields*

*Basketball Courts*

*Batting Cages*

*Bike Parking*

*Dog Parks*

*Drinking Fountains*

*Grills*

*Lockers*

*Multi-purpose Fields*

*Picnic Areas*

*Playgrounds*

*Skating Rinks*

*Spray Grounds*

*Tennis Courts*

*Volleyball Courts*

*And more...*



***NEXT STEP:***

*Rate amenities on:*

- Ages served*
- Condition*
- Place in life cycle*
- Safety*
- Obsolescence /Up to Modern Standards*



## RATING PARK CONDITION + RECREATION VALUE

## EXAMPLE PARK

## PROS RECREATION VALUE SCORE

	*				appropriate for this age group								not appropriate for this age		
FACILITIES and AMENITIES	2-5 years	6-8 years	9-12 years	13-15 years	16-18 years	19-30 years	31-45 years	46-60 years	61-70 years	71-75 years	76 + years	# of Age Groups Covered	AGE GROUP SCORE  (Count number of age groups covered, anything 5+ gets a 5)	CONDITION SCORE  (1-5, 5 is best)	OVERALL SCORE  (Age Group Score multiplied by Condition Score; park total is summed)
Adventure Playground	*	*	*									3	3	3	9
Amphitheater		*	*	*	*	*	*	*	*	*	*	10	5	3	15
Arboretum						*	*	*	*	*	*	6	5	3	15
Food Trucks (area for them)					*	*	*	*	*	*	*	7	5	4	20
Cabin/ Overnight Accommodations						*	*	*	*	*	*	6	5	2	10
Climbing Boulders		*	*	*	*	*						5	5	3	15
Community / Activity Center	*	*	*	*	*	*	*	*	*	*	*	*	5	3	15
Disc Golf			*	*	*	*	*	*				6	5	1	5
Dog Park / Area / Café			*	*	*	*	*	*	*	*	*	9	5	1	5
Green Event Lawn	*	*	*	*	*	*	*	*	*	*	*	11	5	5	25
Farmers Market					*	*	*	*	*	*	*	7	5	4	20
Community Gardens						*	*	*	*	*	*	6	5	5	25
Multi-Purpose Field(s)		*	*	*	*	*	*					6	5	2	10
Natural Areas		*	*	*	*	*	*	*	*	*	*	10	5	5	25
Picnic Areas / Shade Structures					*	*	*	*	*	*	*	7	5	2	10
Play Areas	*	*	*									3	3	1	3
Sand Volleyball					*	*	*	*				4	4	2	8
Rental Shelters						*	*	*	*	*	*	6	5	3	15
Walking Paths / Trails					*	*	*	*	*	*	*	*	5	2	10
Water Features (Splash Pad)	*	*	*	*	*	*	*	*				8	5	5	25
Water Recreation Spray Ground	*	*	*	*	*	*	*	*	*	*		10	5	4	20
Wi-Fi Accessible			*	*	*	*	*	*	*	*	*	9	5	2	10
TOTAL SCORE															315

# ***RATING PARK CONDITION + RECREATION VALUE***

*We'll also be working with Metro Park to understand the following about each park + community center:*

## **GENERAL QUESTIONS**

- *Is the park inviting?*
- *Is it well designed?*
- *Is it easy to maintain?*
- *Is there appropriate signage?*

## **CANDIDATE FOR INVESTMENT**

- *Not a Candidate*
- *Quick Win*
- *Basic Upgrade*
- *Partial Makeover*
- *Transformation*

## **COST ESTIMATES**

- *Total cost to fix what's there*
- *Total replacement cost*
- *Cost of a complete transformation*

# *NEXT STEPS*

- *Dec 16: Metro Council Update*
- *December through April: Park Data Deep Dive*
- *March: Launch community engagement*



*THANK YOU!*

