

OFFICE OF EQUITY

BUDGET HEARINGS

Michael Meeks, Chief Equity Officer

May 16, 2022



Topics

Office of Equity

Office for Women

Human Relations Commission

Truth and Transformation Initiative

Lean Into Louisville Initiative

Contact



Office of Equity Update



Office of Equity



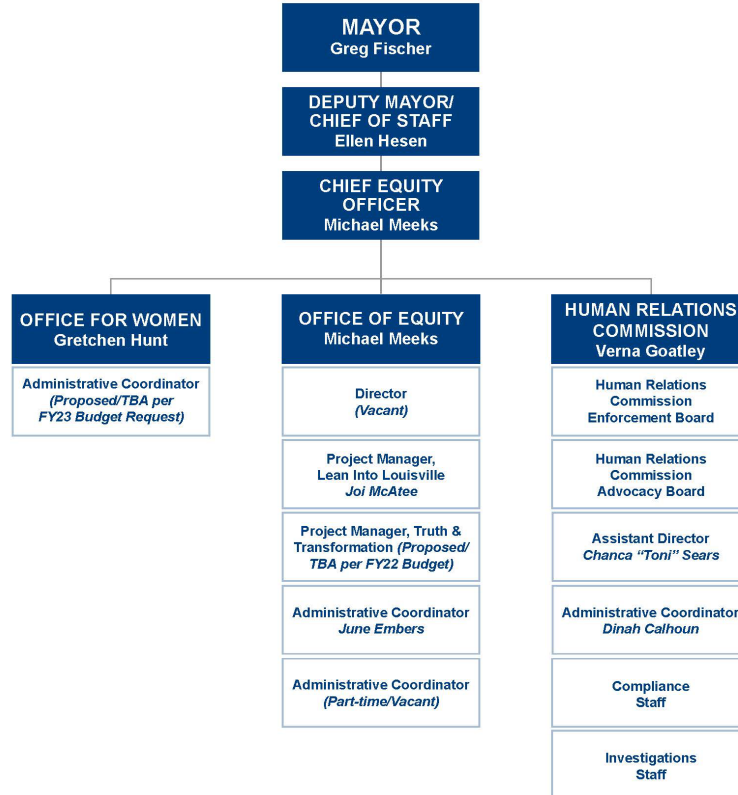
*Open the door to all things equity
at the One Stop Shop.*



Click on the links below to learn about business opportunities,
human resources, equity news you can use and other resources.



OFFICE OF EQUITY PROPOSED FY23
ORGANIZATIONAL CHART





OFFICE FOR
WOMEN

WORKING TO IMPROVE
THE STATUS OF WOMEN IN LOUISVILLE

The OFW focuses on **advancing the status of women in our community through education, advocacy and legislation**. We utilize **collaboration, convene and engagement** as vehicles to improve local gender equality and equity through the lens of intersectionality.

We work to ensure that women have the **resources, information, and a quality of life that are necessary for self-determination and self-sufficiency**. The broad focus of the OFW includes:

- Gender based Violence
- Human Trafficking
- Social and Economic Well-being
- Housing
- Education
- Civic Engagement
- Autonomy

Office for Women Programs

- **Office for Women Ambassadors:** 26 Ambassadors, one from each council district to bring needs of women in community to Metro Govt and serve as ambassadors to community about Metro services and programs benefitting women
- **Commission on Gender Equity and Gender Equity Summit:** One day summit with government, community and non-profit leaders to address progress in seven focus areas: violence against women, human trafficking, social and economic well-being, education, housing
- **Diaper Need:** Convene partners, Raise awareness, amplify and scale current community efforts to address diaper need
- **Human Trafficking:** Develop resource guide and convene partners to address available services and gaps for survivors of human trafficking
- **Gender Based Violence:** Convene partners (ex: LMPD, Domestic Violence Coordinating Council) to bring national training by AEQUITAS: Prosecutors Resource on Violence Against Women on stalking and human trafficking

Human Relations Commission



Louisville Metro
Human Relations Commission **574-3631**



CALL US REGARDING:



Employment • Hate Crimes
Housing • Public Accommodations
COMPLAINTS

The work that provided the basis for this publication was supported by funding under a Cooperative Agreement with the U.S. Department of Housing and Urban Development. The substance and findings of the work are dedicated to the public. The author and publisher are solely responsible for the accuracy of the statements and interpretations contained in this publication. Such interpretations do not necessarily reflect the views of the Government.





TRUTH AND TRANSFORMATION INITIATIVE

- Reconciliation is a restorative approach to center the needs of harmed communities and hold institutions accountable for repairing harm and building trust;
- The Truth and Transformation Initiative of the National Network for Safe Communities involves key elements: Understand and Acknowledgement of Harm, Fact-Finding, Listening, Narrative Collection, and Policy/Procedural Change;
- Reconciliation can help reduce violence, right wrongs of the past and present, and it is the right thing to do.





LEAN INTO LOUISVILLE
LISTEN | LEARN | LEAD

Lean Into Louisville is a series of activities, art exhibits, conversations, and presentations to explore and confront the history of and legacy of all forms of discrimination and inequality.

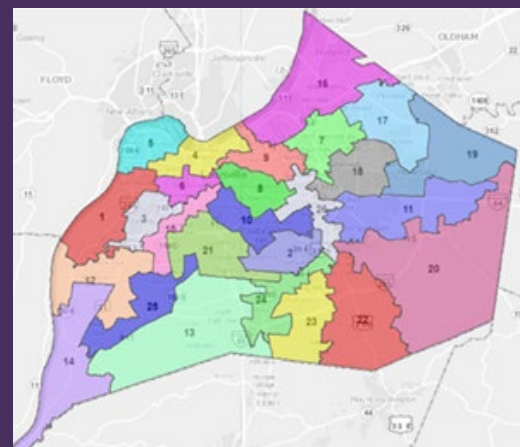
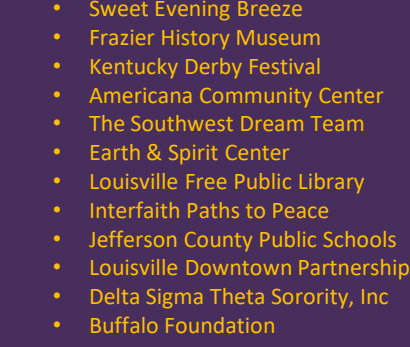
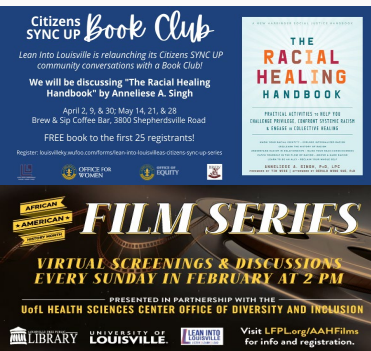
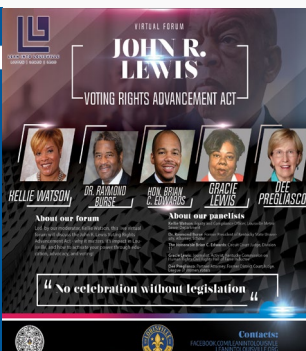
This initiative will:

- Educate citizens on root causes that perpetuate poverty, oppression, and division
- Advocate for and empower traditionally marginalized and vulnerable people, and connect them to community resources and support
- Provide safe spaces for dialogue and learning
- Serve as the catalyst for a culture shift by fostering unity and strengthening the social fabric of our city
- Bolster Louisville's status as ideal landing site for new business development and investment - specifically companies that value the expertise a diverse workforce offers





Since the October 2021 re-launch, approximately 11,800 residents have engaged with Lean Into Louisville through virtual and/or in-person events and programming



CONTACT:

Michael. Meeks
Chief Equity Officer
Louisville Metro Government
527 West Jefferson, Suite 201
Louisville, KY 40202
502-574-6848
Michael.Meeks@louisvilleky.gov

