

Department of Public Health and Wellness

FY22 Budget Presentation

May 18, 2022

Sarah Moyer, MD, MPH | Director

Connie Mendel, MPH | Deputy Director

Jeff Howard, MD, MBA, MPH | Medical Director



DEPARTMENT OF
**PUBLIC HEALTH
AND WELLNESS**





Mission

Achieve health equity and improve the health and well-being of all Louisville residents and visitors.

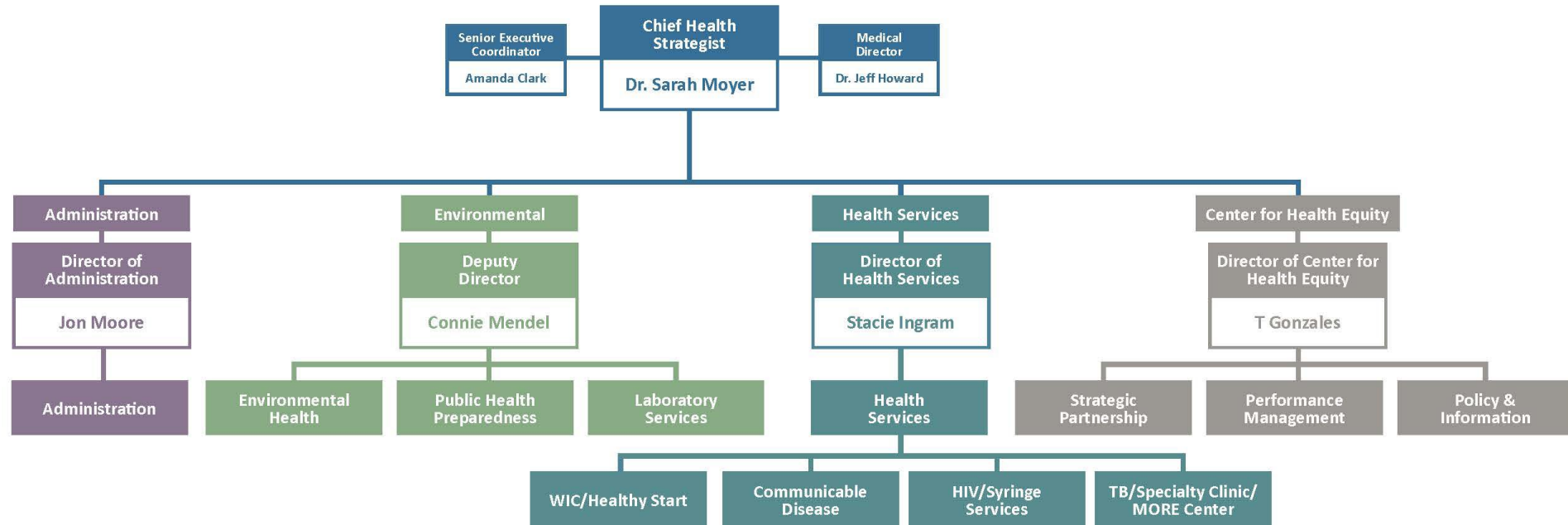
Vision

A healthy Louisville where everyone and every community thrives.

Values

Collaboration,
Innovation, Grit,
Quality, Integrity

LMPHW OVERVIEW



Normal Operations

Health Equity

Academic Health Department

TB Clinic
Specialty Clinic
MORE Center
Harm Reduction Services

Immunizations

Communicable Disease Prevention
HIV Prevention
WIC
Healthy Start
Laboratory

Emergency Preparedness

Food Safety

Mosquito & Tick Control
Tattoo and Body Art Inspections

Hotel, Swimming Pool, Mobile Home Park Inspections

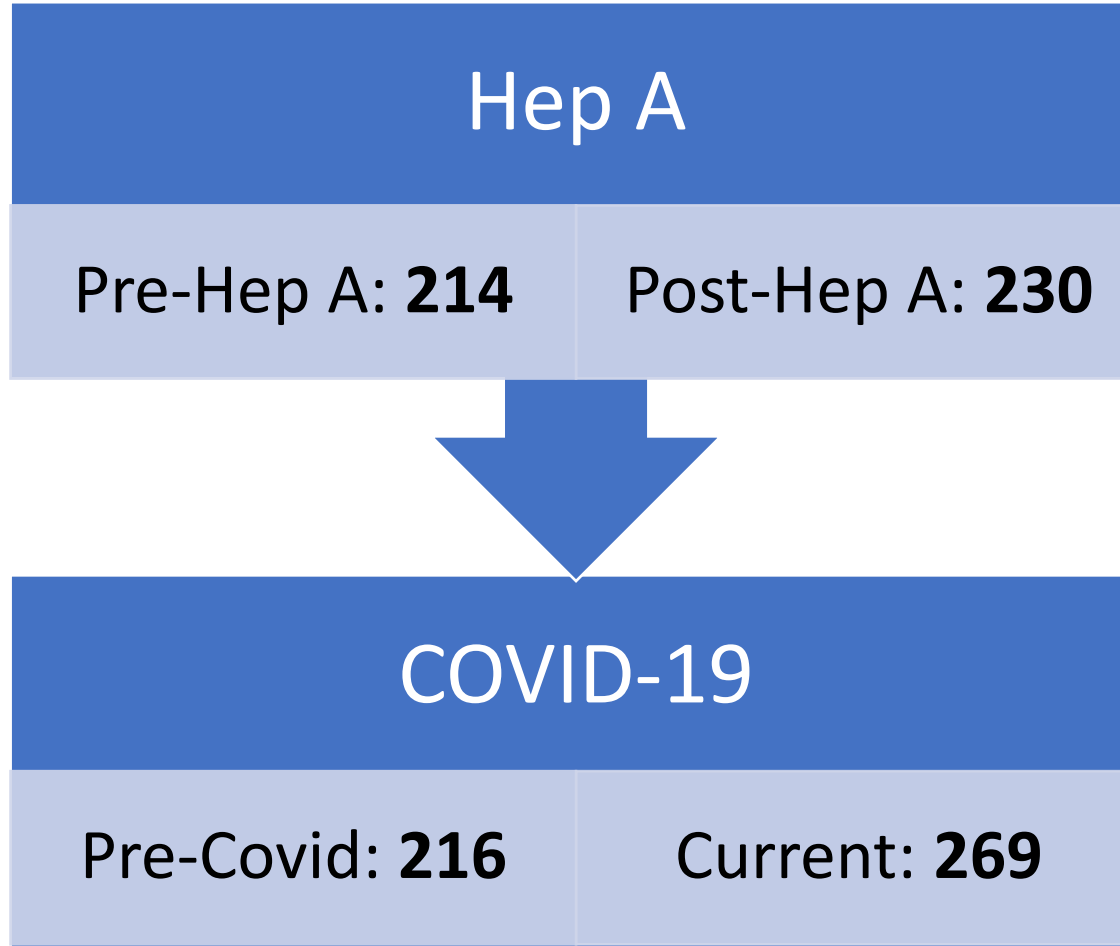
Childhood Lead Poisoning Prevention

Hazardous Materials
Plan Review
Onsite Sewage

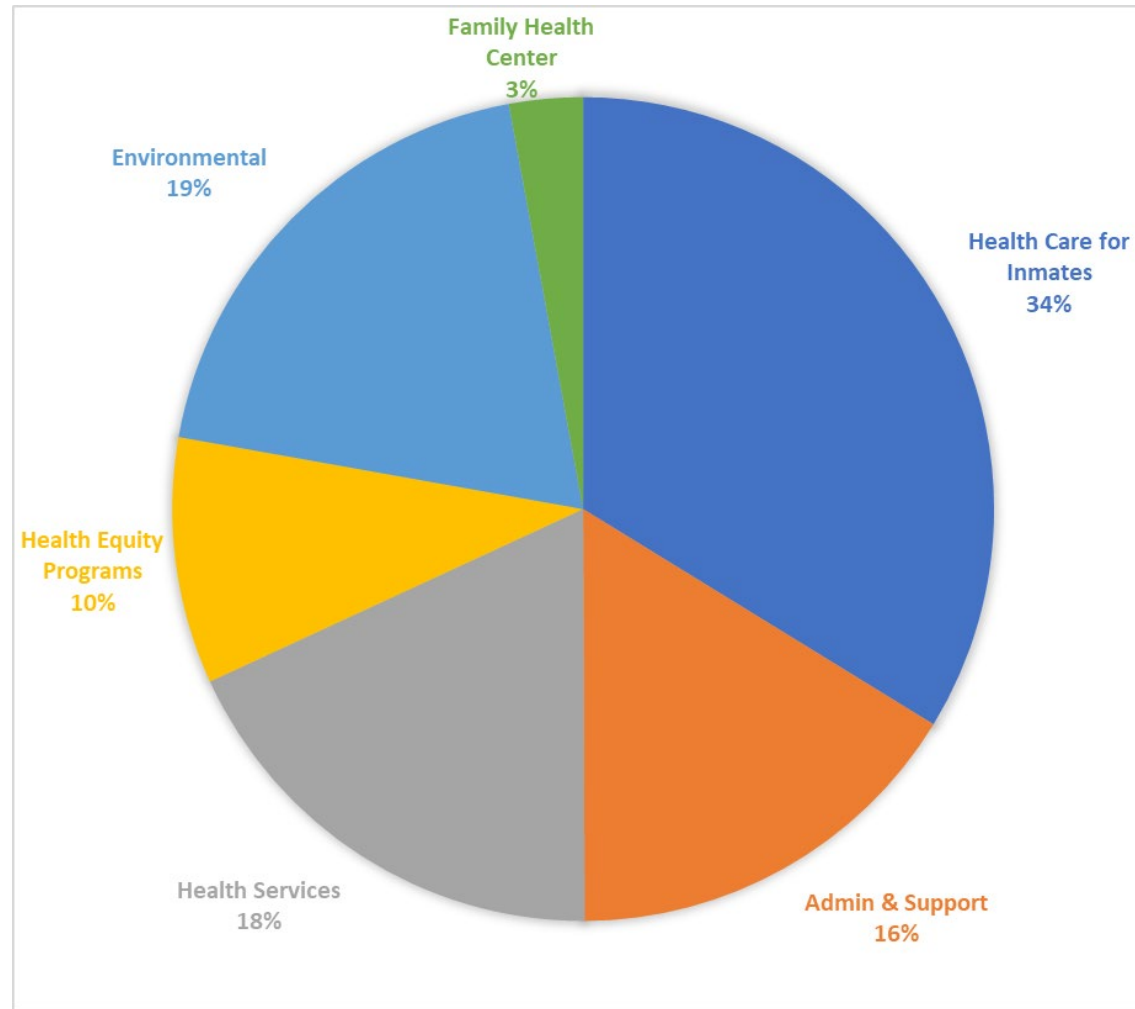
COVID-19 Operations

Incident Command
Epidemiology
Data
Education
Investigations
Media
Testing
Contact Tracing
Essential Needs
School Support
Strike Teams
Planning
Logistics
Vaccine Distribution

Staffing Levels



Breakdown of General Funds



Health Equity Statement

Department Equity Vision Statement

LMPHW's mission is to achieve health equity and improve the health and well-being of all Louisville residents and visitors. Our vision is a healthy Louisville where everyone and every community thrives.

Department Equity Goals

- Goal # 1: LMPHW will have a fully staffed and onboarded Equity Infrastructure team by September 2022.
- Goal # 2: LMPHW will have a training plan for LMPHW staff on racial equity by January 2023.
- Goal # 3: LMPHW will have a strategy for working with divisions to advance racial equity by January 2023.

Equity Goal Measures and KPIs

- Goal #1 KPI: # staff hired; # staff with completed onboarding plans
- Goal #2 KPI: # trainings created
- Goal #3 KPI: # of initial strategy meetings completed with divisions

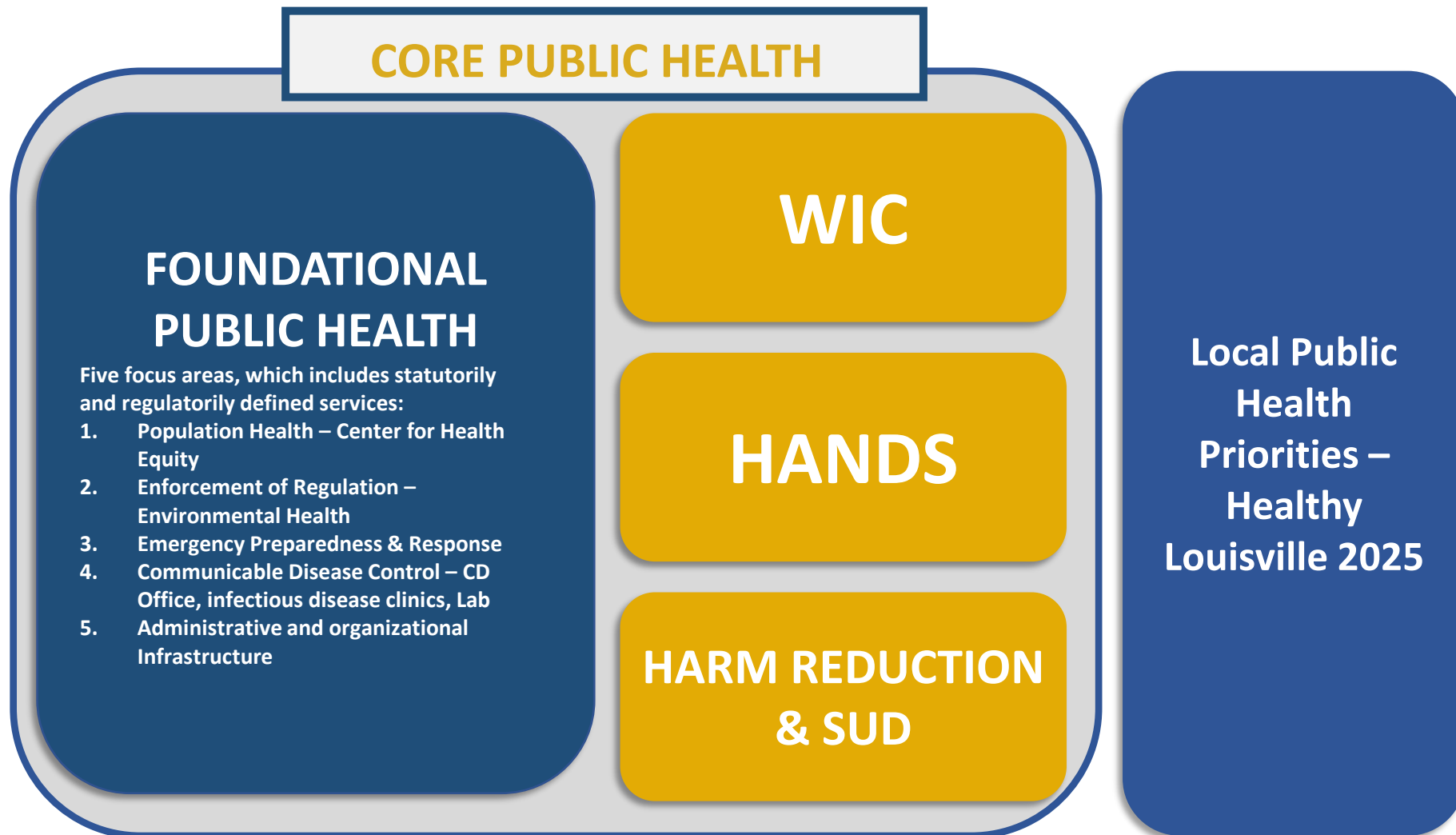


HEALTH OUTCOMES

The diagram features a large tree with a thick brown trunk and a dense green canopy. The canopy is divided into two main sections. The upper section, labeled 'HEALTH OUTCOMES', is represented by a light green, cloud-like shape. The lower section, labeled 'ROOT CAUSES', is represented by a darker green, cloud-like shape. The trunk of the tree extends down into the ground, which is depicted as a brown, textured surface. The ground is divided into two main sections. The upper section, labeled 'ROOT CAUSES', is represented by a light brown, cloud-like shape. The lower section, labeled 'SYSTEMS OF POWER', is represented by a darker brown, cloud-like shape. The tree's roots are shown extending into the ground, connecting the canopy to the base. Two black arrows point upwards: one from the 'ROOT CAUSES' section to the 'HEALTH OUTCOMES' section, and another from the 'SYSTEMS OF POWER' section to the 'ROOT CAUSES' section.

ROOT CAUSES

SYSTEMS OF POWER



HB129 – The local health department will dedicate 1.8 percent of every one hundred dollars of assessed property value to foundational public health programs within the agency’s jurisdiction

Needs Assessment Criteria

- **Data Driven Need:** health outcome and/or health behavior does not meet recognized targets.
- **Adequate Funding:** federal, state, local, and/or other funding sources that do not rely on restricted or unrestricted funding.
- **Evidence Based/Promising Practice:** interventions used for program/service.
- **Performance Management/Quality Improvement indicator(s):** information to be monitored that demonstrates impact.
- **Exit:** time-frame of offering or ceasing the program/service.
- **Exit Strategy:** indicators for when the program is no longer needed, offered by another agency/organization in the community, or financially unsustainable.

Questions

Lou Health Covid
Helpline: 502-912-8598

To view the **Community Health
Needs Assessment**, visit
healthylouisville2025.com

To schedule an appointment for
Women, Infants, and Children
(WIC) services, call 502-574-
5978

Save a Life: Overdose
Prevention Training 502-574-
8800

Programs and Services

LMPHW

COVID-19 Operations

Operation
Planning &
Infrastructure

Disease
Investigation &
Essential Needs

Community
Testing

Vaccination
Efforts

Community
Support

Administration

Human Resources	Communications	IT	Finance	Logistics
<ul style="list-style-type: none">• Workforce Development• Training• Payroll• Daily HR Operations• Workforce Support	<ul style="list-style-type: none">• News Media Liaison• Public Affairs• Marketing Communications• Advertising• Graphic Design• Digital and Social Media	<ul style="list-style-type: none">• Software Applications Support• IT Hardware Support• EHR Implementation	<ul style="list-style-type: none">• Budget Implementation• Contract & MOA Execution• Grant Seeking & Applications• Project Management	<ul style="list-style-type: none">• Safety• Fleet Maintenance• Building Maintenance• Inventory Control

Center for Health Equity

Policy and Innovation

- Health Equity Report
- Health in All Policies
- Health Impact Assessments
- Racial Equity Impact Assessments
- Health Equity Training

Strategic Engagement

- Maternal and Child Health
- Healthy Babies Louisville
- Early Childhood Development
- Community Advisory Board
- Community Health Worker Coordination
- Special Community Projects
- Asthma Initiative
- Senior Medicare Patrol

Research and Academic Partnerships

- Population Health Surveillance and Research
- Informatics and Data Management
- Data Requests
- Program Evaluation
- Biostatistics
- Academic Health Department

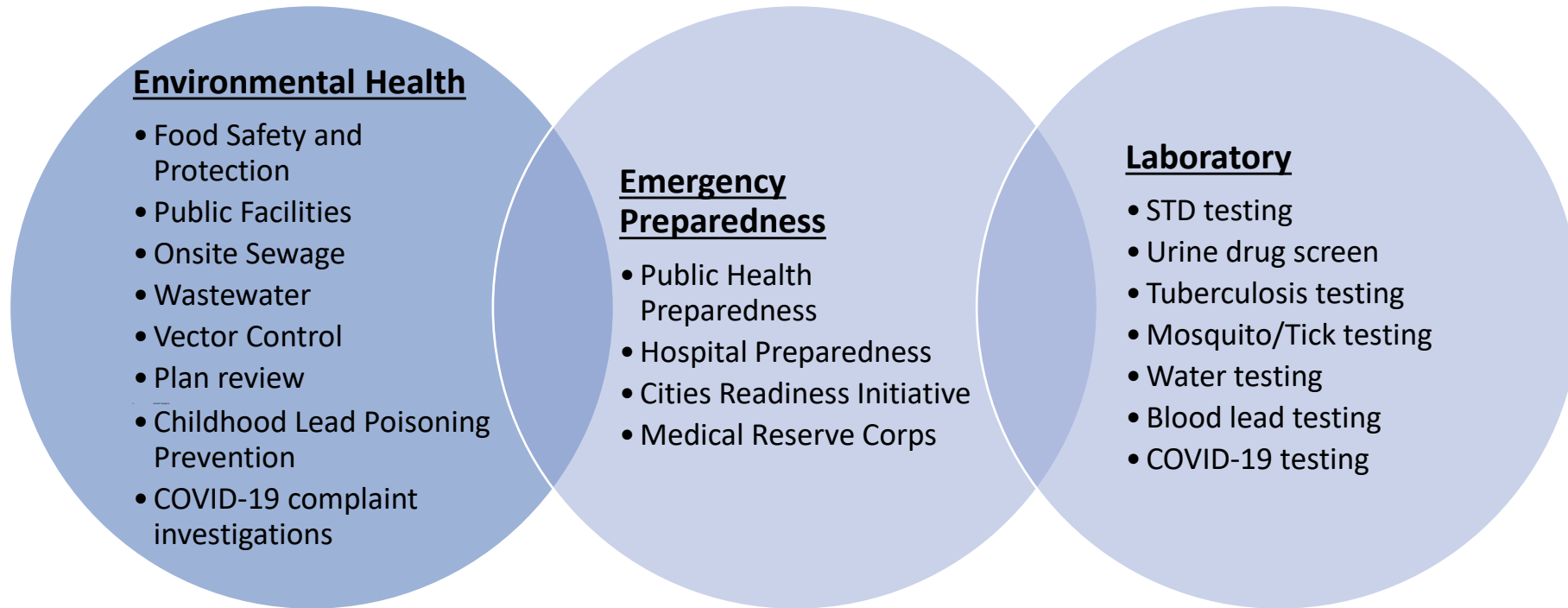
Behavioral Health Equity

- Community Behavioral Health Equity Plan
- Quick Response Team
- Community Harm Reduction
- LGBT Health Equity Initiatives
- Suicide Prevention and Awareness
- Tobacco Prevention and Cessation

Performance, Planning, and Project Management

- Public Health Accreditation
- Community Health Needs Assessment
- COVID Insights to Action
- CDC Inequities Grant
- Community Health Improvement Plan (Healthy Louisville 2025)
- Strategic Planning
- Quality Improvement
- Performance Management

Environmental Health, Emergency Preparedness and Laboratory



Health Services

Communicable Diseases

- Disease surveillance
- Immunizations clinics for reduction of vaccine-preventable illness
- COVID-19: case investigation, contact tracing management, isolation and quarantine essential needs linkage

Tuberculosis (TB) Clinic

- TB screening and testing
- Treatment of Latent TB Infection (LTBI) and TB Cases for Region
- Contact Investigation and Case Management for TB Cases

Specialty Clinic

- STD and HIV testing
- STD counseling

MORE Center

- Medication for Opioid Use disorder/Medication Assisted Treatment (Methadone)
- Addiction counseling services
- Referral for social service assistance

Health Services, Cont.

Harm Reduction Outreach

- Reducing infection through education and testing for HIV and Hepatitis C

Cancer Screening

- Identify uninsured women with abnormal breast and cervical cancer screen (KWCSF)

HIV Prevention, Surveillance, and Linkage to Care

- Provide priority population-focused education and testing for HIV in community
- Receive new HIV positive reports from healthcare providers and laboratories
- Link patients with newly-diagnosed HIV and lost-to-follow up HIV-positive individuals and with HIV treatment providers

WIC Program

- Nutritional counseling and medical nutritional therapy
- Breastfeeding counseling and support
- Supplemental food benefits
- COVID19: increased participation with telephonic visits

Healthy Start

- Reduce infant mortality rates in specific Louisville Zip Codes (40202, 40203, 40208, 40210, 40211, 40212)
- Promote consistent prenatal care throughout pregnancy and infant care

Health Impact Pyramid

