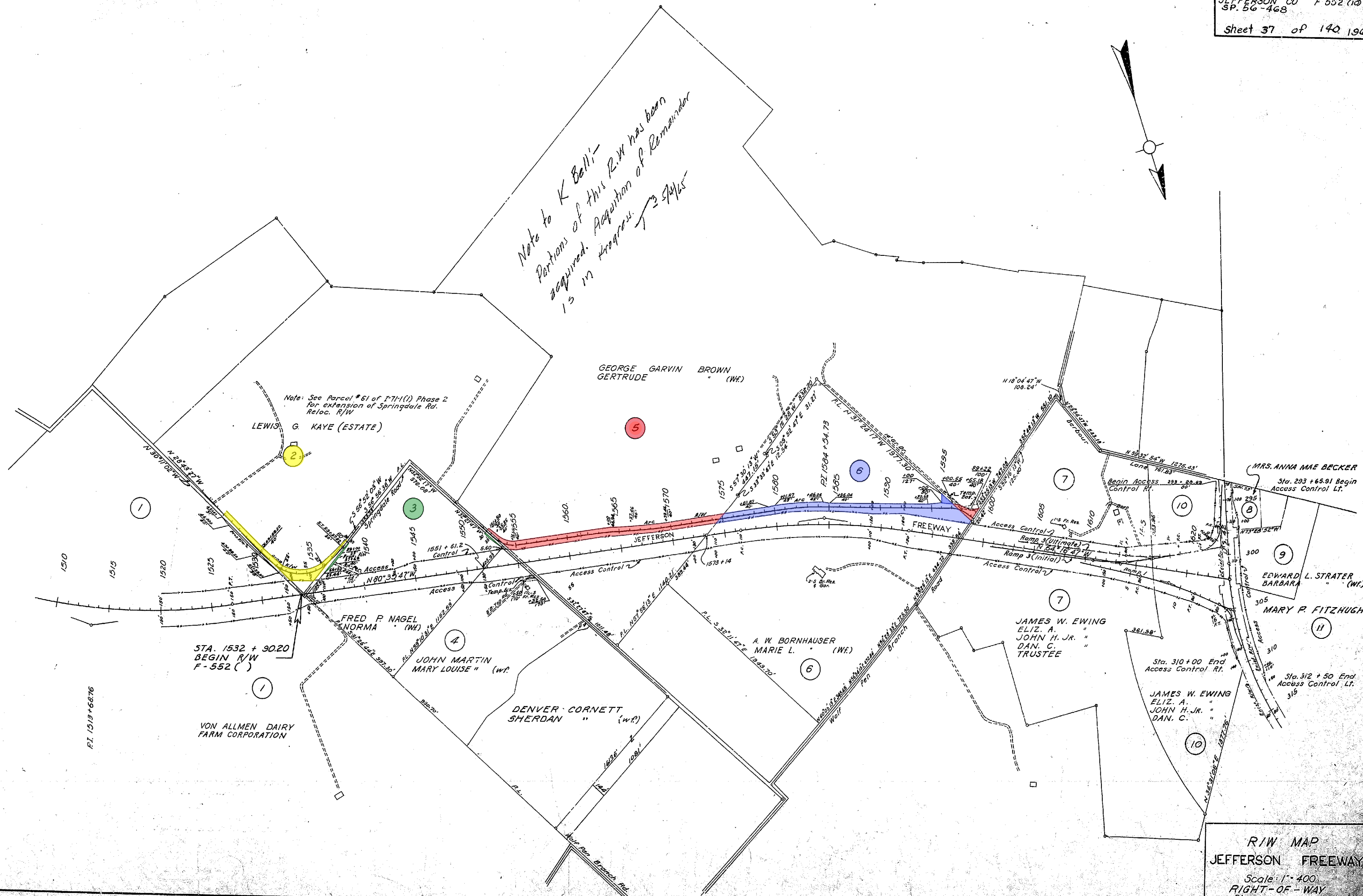


*Note to K Bell:-
 Portions of this R.W. has been
 acquired. Acquisition of Remainder
 is in progress. 3 9/16/65*

*Note: See Parcel # 61 of F-71-1(1) Phase 2
 for extension of Springdale Rd.
 Reloc. R/W*



R/W MAP
 JEFFERSON FREEWAY
 Scale: 1" = 400'
 RIGHT-OF-WAY
 Sheet

