

**ZONE CHANGE LEGAL DESCRIPTION
FOR
3500 Lees Lane**

TRACT 1:

BEGINNING at a point within the Lees Ln right-of-way, thence **S59°14'37"E, 367.85'**; thence **N40°24'48"E, 1563.35'** to a point; thence **S85°24'48"W, 410.99'** to a point; thence **S08°36'31"E, 80.18'** to a point, thence on an arc having the chord **N18°16'50"E, 36.18'** with a radius of **40'** to a point; thence on an arc having the chord **N03°55'18"W, 105.81'** with a radius of **70'** to a point; thence on an arc having the chord **N22°34'01"W, 40.54'** with a radius of **40'** to a point; thence on an arc having the chord **N32°55'51"E, 148.20'** with a radius of **175'** to a point; thence **S57°58'58"W, 214.76'** to a point; thence on an arc having the chord **N49°11'53"E, 99.27'** with a radius of **325'** to a point; thence **N40°24'48"E, 449.82'** to a point; thence on an arc having the chord **S30°23'18"W, 113.15'** with a radius of **325'** to a point; thence on an arc having the chord **N45°00'25"E, 312.73'** with a radius of **375'** to a point; thence on an arc having the chord **N50°29'29"E, 213.33'** with a radius of **325'** to the POINT OF BEGINNING containing 16.36 +/- acres

TRACT 2:

BEGINNING at a point in the southern-most corner of the property owned by the Illinois Central Railroad Co, thence **N61°20'00"W, 208.70'** to a point; thence **N40°24'48"E, 669.84'** to a point; thence on an arc having the chord **N15°54'08"E, 186.69'** with a radius of **225'** to a point; thence **S85°24'48"W, 410.99'** to a point; thence **S40°24'48"W, 1095.50'** to the POINT OF BEGINNING containing 4.95 +/- acres.

TRACT 3:

BEGINNING at a point in the southwestern-most corner of the property owned by the Illinois Central Railroad Co, thence **N40°31'06"E, 610.40'** to a point; thence **S71°47'31"E, 63.33'** to a point; thence **N73°55'47"E, 362.87'** to a point; thence **S66°40'10"E, 158.60'** to a point; thence **N46°24'31"E, 794.40'** to a point; thence **N88°18'54"E, 254.68'** to a point; thence **S23°57'51"E, 306.06'** to a point; thence **S49°35'12"E, 144.26'** to a point; thence **S40°24'48"W, 77.76'** to a point; thence on an arc having the chord **N49°11'53"E, 84'** with a radius of **84'** to a point; thence **S57°58'58"E, 214.76'** to a point; thence on an arc having the chord **N31°08'23"E, 203.20'** with a radius of **203'** to a point; thence on an arc having the chord **N34°21'52"E, 77'** with a radius of **40'** to a point; thence on an arc having the chord **S08°49'48"E, 112.62'** with a radius of **70'** to a point; thence on an arc having the chord **S35°29'52"E, 36.18'** with a radius of **40'** to a point; thence **S08°36'31"E, 80.18'** to a point; thence on an arc having the chord **S15°54'08"W, 145.20'** with a radius of **175'** to a point; thence **S40°24'48"E, 680.24'** to a point; thence **N61°20'00"W, 805.95'** to the POINT OF BEGINNING containing 37.09 +/- acres.

RECEIVED

FEB 03 2022

PLANNING & DESIGN
SERVICES

22 - ZONE 11 - 0013

TRACT 4:

BEGINNING at a point within the Lees Ln right-of-way at the northern most corner of the property owned by the Illinois Central Railroad Co. thence **N59°14'37"E, 311.38'** to a point; thence **N30°42'56"E, 106.82'** to a point; thence **N13°49'20"E, 124.47'** to a point; thence **N19°24'39"E, 319.88'** to a point; thence **N02°41'58"W, 121.66'** to a point; thence **N78°59'12"E, 138.13'** to a point; thence **N53°58'19"E, 92.74'** to a point; thence **N90°00'00"E, 84.85'** to a point; thence **N60°53'23"E, 83.60'** to a point; thence **N27°14'03"E, 62.98'** to a point; thence **N46°24'31"E, 794.40'** to a point; thence **S66°40'10"E, 158.60'** to a point; thence **N73°55'47"E, 362.87'** to a point; thence **S71°47'31"E, 63.33'** to a point; thence **S40°31'06"W, 1830.33'** to a point; thence **N59°07'24"W, 100.00'** to a point; thence **S40°31'06"W, 260.81'** to the POINT OF BEGINNING containing 20.90 +/- acres.

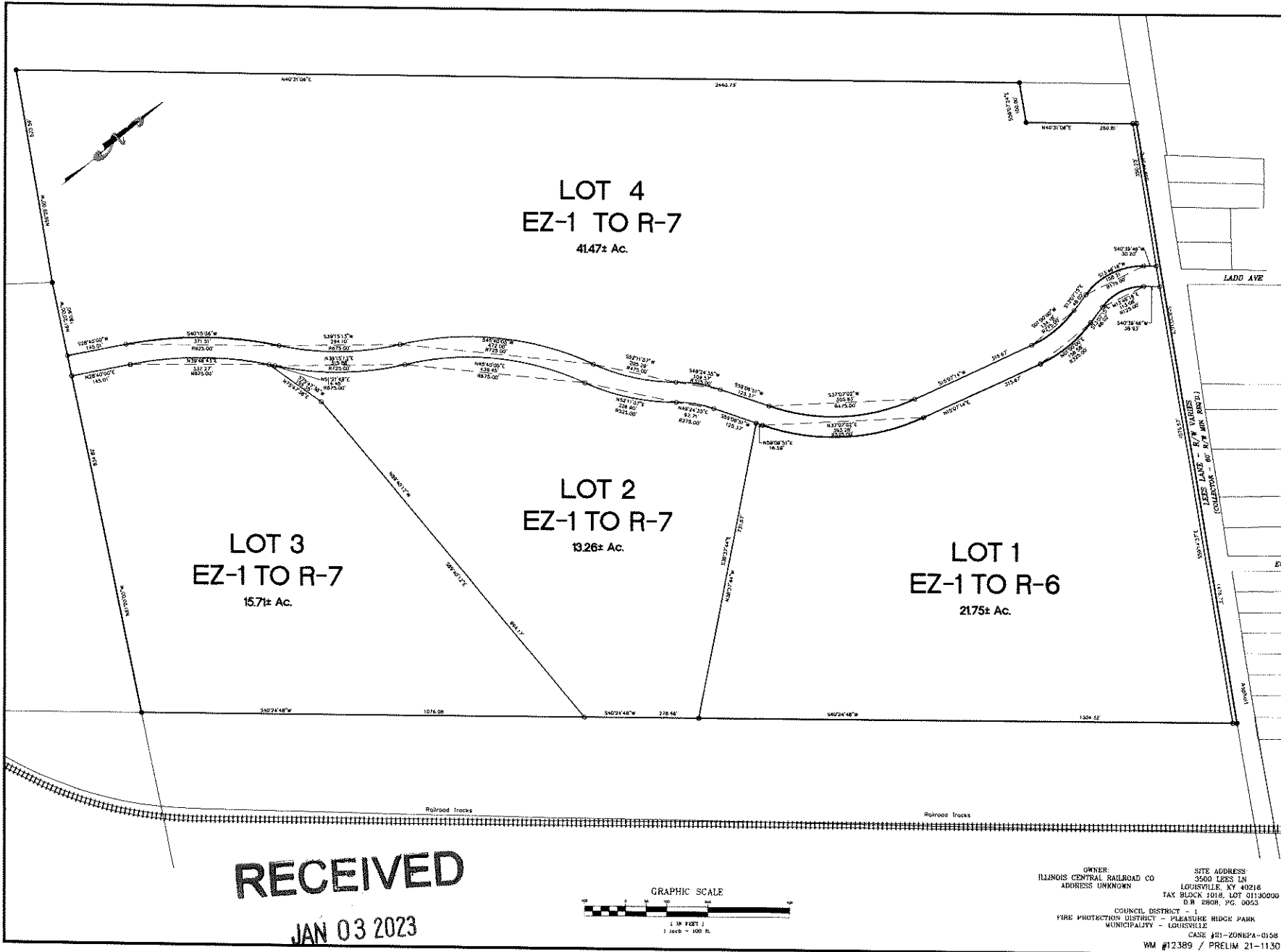
TRACT 5:

BEGINNING at a point within the Lees Ln right-of-way, thence **N59°14'37"W, 747.32'** to a point; thence on an arc having the chord **N50°32'37"E, 180.03'** with a radius of 275' to a point; thence on an arc having the chord **N45°00'25"E, 354.43'** with a radius of 425' to a point; thence on an arc having the chord **N30°23'18"W, 95.74'** with a radius of 275' to a point; thence **N40°24'48"E, 459.00'** to a point; thence **S49°35'12"E, 144.26'** to a point; thence **S23°57'51"E, 306.06'** to a point; thence **N88°18'54"E, 254.68'** to a point; thence **N27°14'03"W, 62.98'** to a point; thence **N60°53'23"E, 83.60'** to a point; thence **N90°00'00"W, 84.85'** to a point; thence **N53°58'19"E, 92.74'** to a point; thence **N78°59'12"E, 138.13'** to a point; thence **N02°41'58"W, 121.66'** to a point; thence **N19°24'39"E, 319.88'** to a point; thence **N13°49'20"E, 124.47'** to a point; thence **N30°42'56"E, 106.82'** to the POINT OF BEGINNING containing 12.69 +/- acres.

RECEIVED

FEB 03 2022

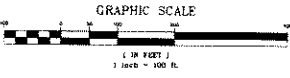
PLANNING & DESIGN
SERVICES



RECEIVED

JAN 03 2023

PLANNING & DESIGN SERVICES



OWNER: ILLINOIS CENTRAL RAILROAD CO
 ADDRESS UNKNOWN
 SITE ADDRESS: 3500 LEES LANE
 LOUISVILLE, KY 40216
 TAX BLOCK 1018, LOT 01130000
 D/R 2808, P.C. 0053
 COUNCIL DISTRICT - 1
 FIRE PROTECTION DISTRICT - PLEASURE HEDGE PARK
 MUNICIPALITY - LOUISVILLE
 CASE #21-ZONE#A-0158
 WM #12389 / PRELIM 21-1130

REVISIONS	
NO.	DATE

DESIGNER'S SEAL

PROJECT DATA

PROJECT DATA
 FILE NAME: 2021-11-03-1130-0158.DWG
 DATE: 11/03/21
 CALC BY: JLD
 CHECKED BY: JLD

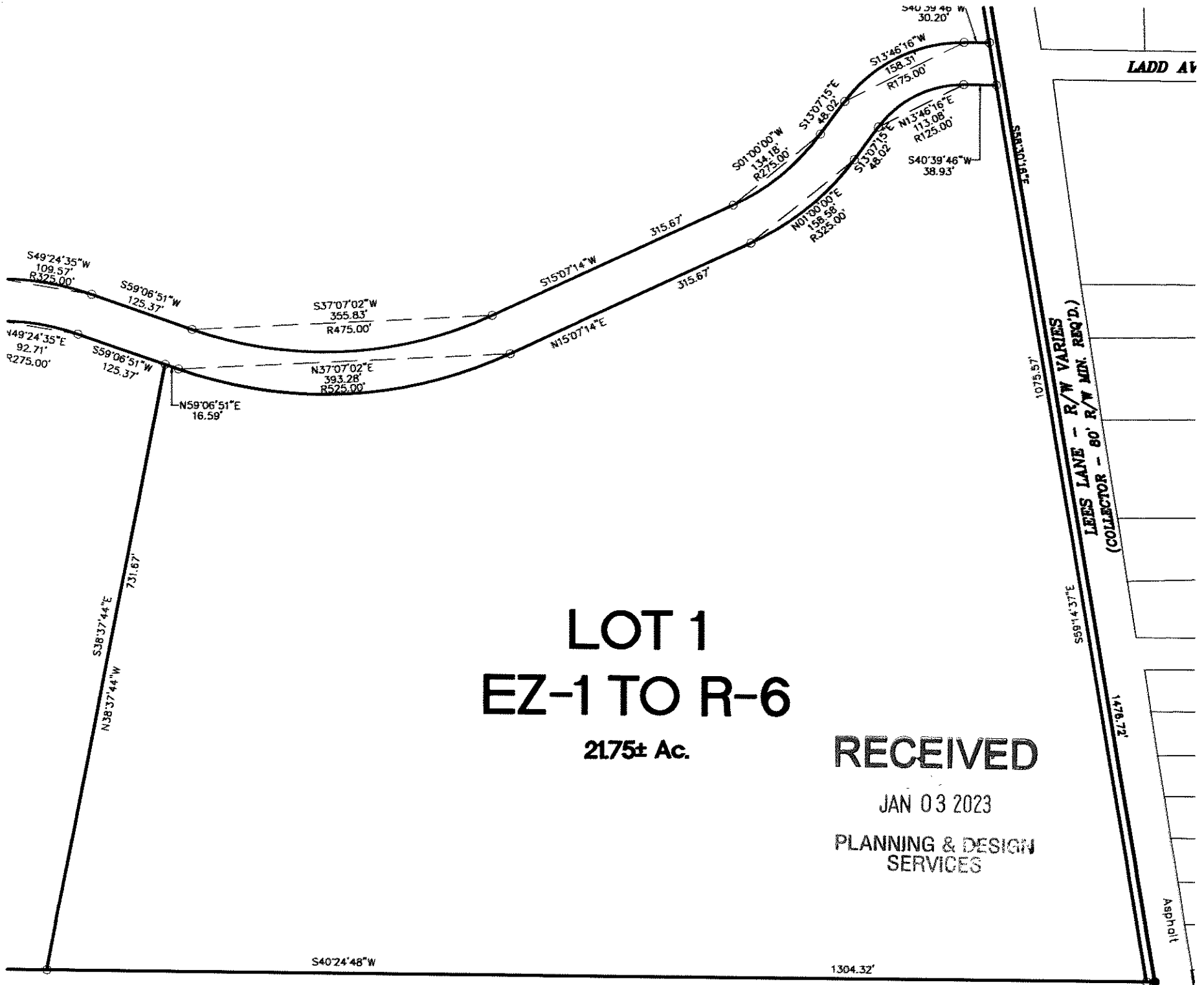
LDD&D
 LAND DESIGN & DEVELOPMENT, INC.
 LAND DEVELOPMENT, LLC
 1469 S. 4TH STREET
 LOUISVILLE, KY 40208

ZONING CHANGE E-14837 PL-11
LDG
 3500 LEES LANE
 OWNER/DEVELOPER
 LDG DEVELOPMENT, LLC
 1469 S. 4TH STREET
 LOUISVILLE, KY 40208

SHEET 1 OF 1

22-ZONE - 0013

Plot created from \S:\2021\11\03\1130-0158-0158.DWG Date: 11/03/21 11:07:27 AM Author: JLD



27-70NF-10012

G:\Current Projects\20264\DWG\Planning\20264-REZONING EXHIBIT-1-3-23.dwg, 1/3/2023 12:02 PM, Helton,
1:1.45541

LOT 3
Z-1 TO R-7
15.71± Ac.

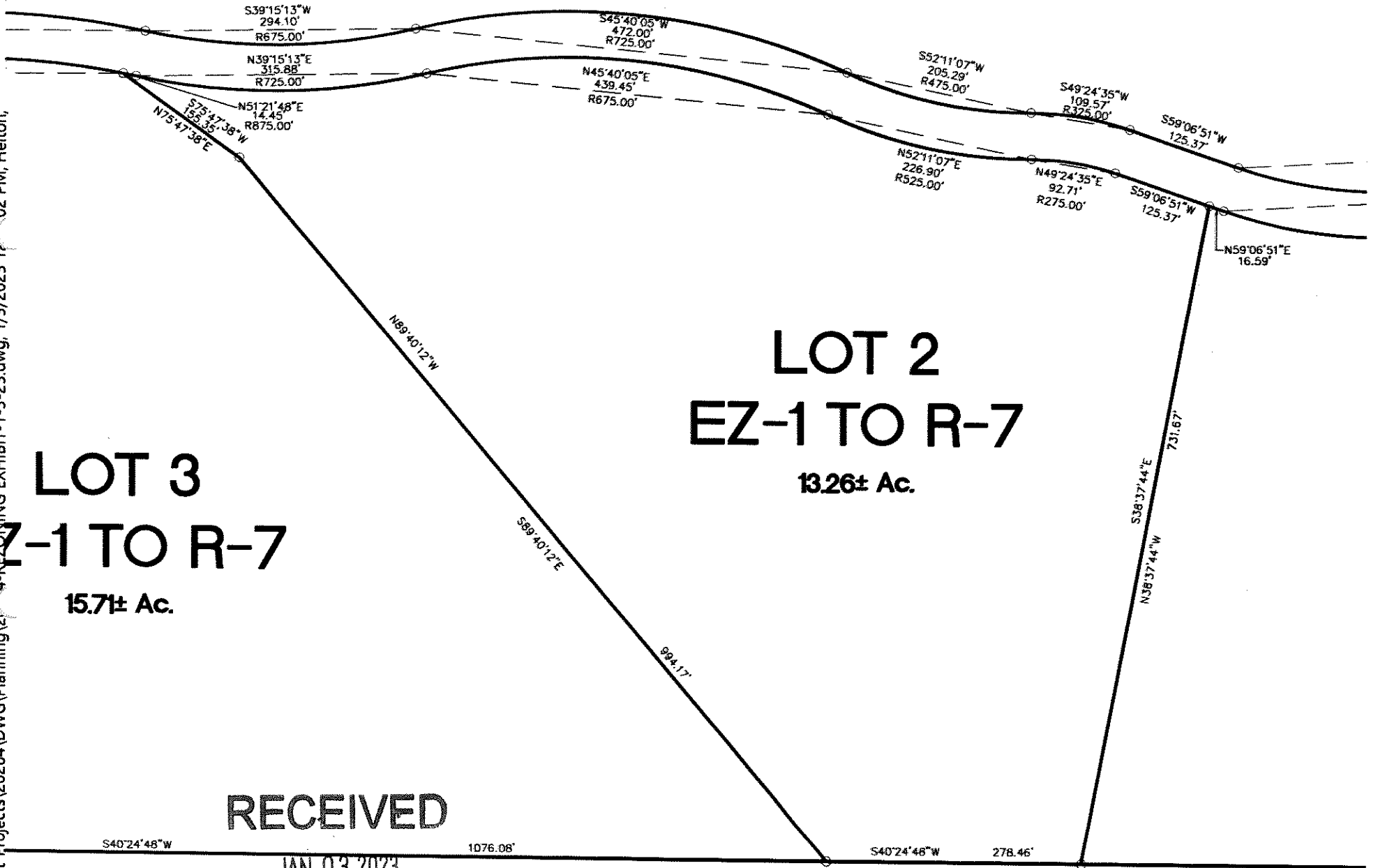
LOT 2
EZ-1 TO R-7
13.26± Ac.

RECEIVED

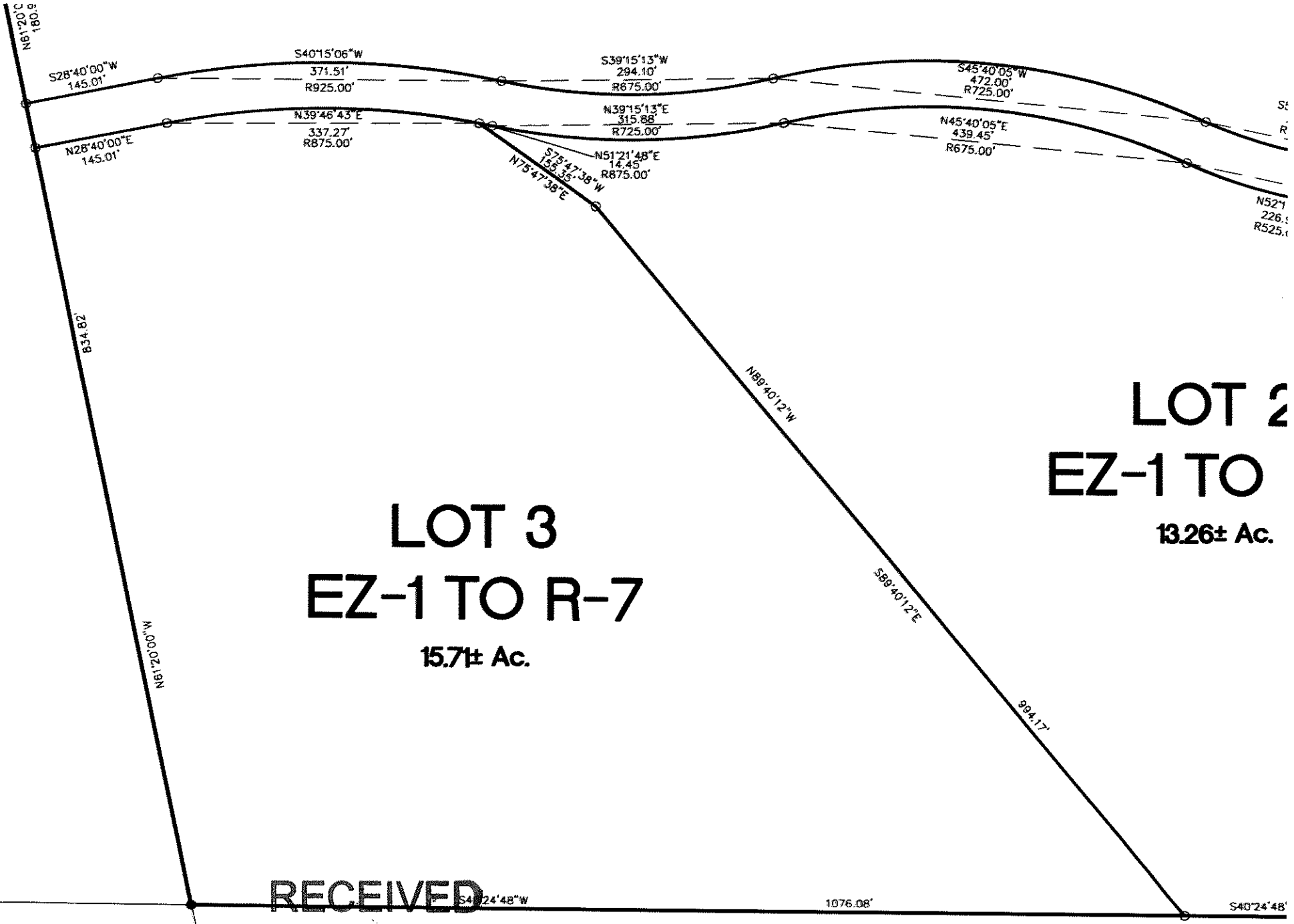
JAN 03 2023

PLANNING & DESIGN
SERVICES

22-ZONE-0013



G:\Current Projects\20264\DWG\Planning\20264-REZONING EXHIBIT-1-3-23.dwg, 1/3/2023 12:04:17 PM, Helton, 1:1.383



RECEIVED

JAN 03 2023

PLANNING & DESIGN
SUNBELT

22-ZONE-0013

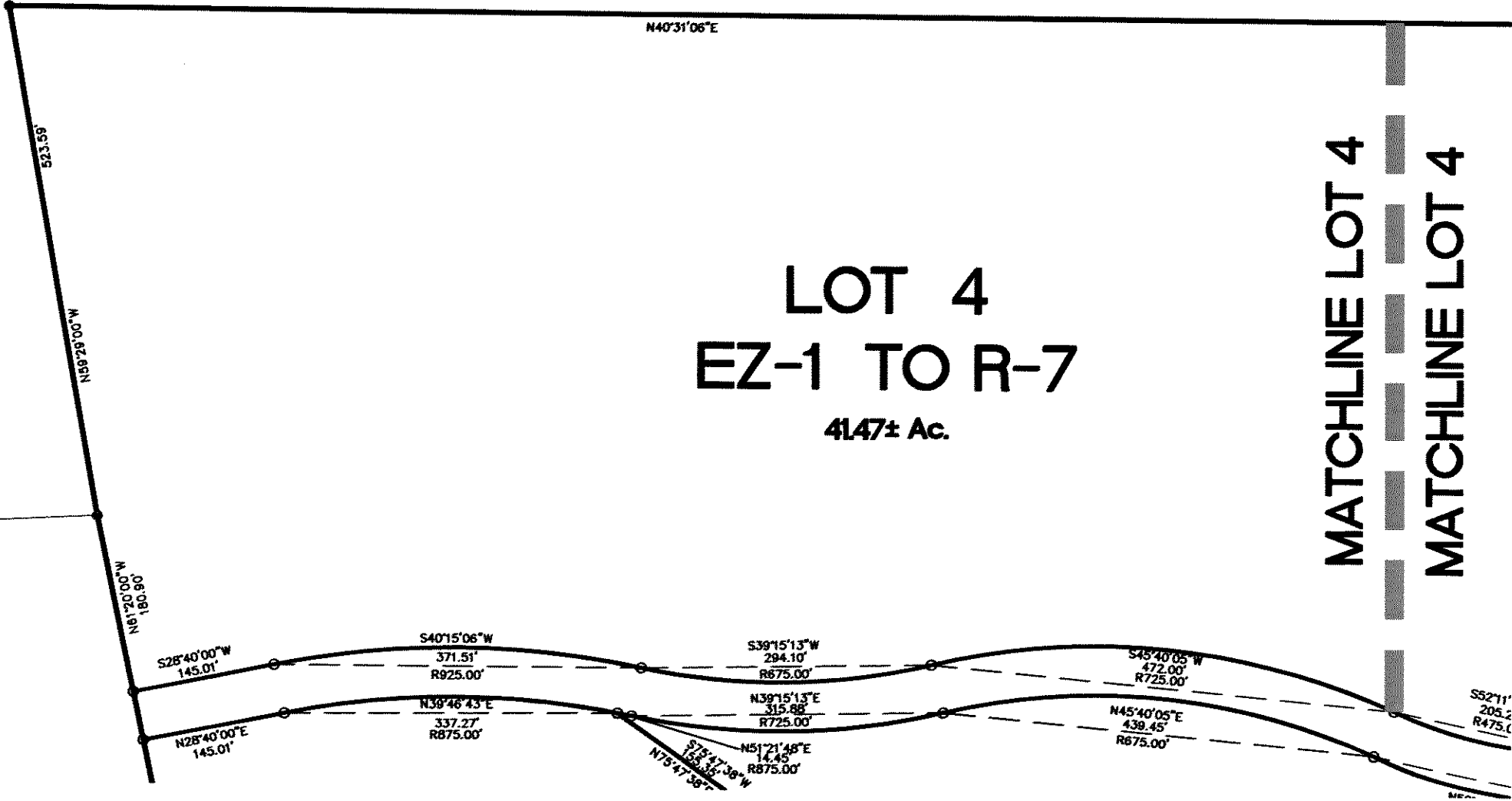
RECEIVED

JAN 03 2023

PLANNING & DESIGN
SERVICES

LOT 4
EZ-1 TO R-7
4147± Ac.

MATCHLINE LOT 4
MATCHLINE LOT 4



G:\Current Projects\20264\DWG\Planning\20264-REZONING EXHIBIT-1-3-23.dwg, 1/3/2023 12:39 PM, Helton,
1:148.808

22-ZONE-0013

RECEIVED

JAN 03 2023

PLANNING & DESIGN
SERVICES

2440.73'

S89°07'24"E
100.00'

N40°31'06"E

260.81'

350.23'

MATCHLINE LOT 4
MATCHLINE LOT 4

LOT 4
EZ-1 TO R-7
4147± Ac.

S52°11'07"W
205.29'
R475.00'

S48°24'35"W
109.57'
R325.00'

S59°08'51"W
125.37'

S37°07'02"W
355.83'
R475.00'

S15°07'14"W
315.67'

S15°07'14"W
315.67'

S01°00'00"W
134.18'
R275.00'

S13°07'15"E
43.02'

S13°46'16"W
158.37'
R175.00'

S40°39'46"W
30.20'

N13°46'16"E
113.08'
R125.00'

S40°39'46"W
38.93'

N52°11'07"E
228.90'
R525.00'

N48°24'35"E
92.71'

N15°07'14"E

7

G:\Current Projects\2024\DWG\Planning\2024-REZONING EXHIBIT-1-3-23.dwg, 1/3/2023 12:19 PM, Helton
1:150.89

22-ZONE-0013