

166 William Street  
Louisville, KY 40206

166 William Street is a shotgun-style home in the Clifton neighborhood of Louisville. It has two bedrooms and one bathroom. The kitchen and living room are located in the front of the home. The bedrooms and bathroom connect to a hallway that runs from the front to the rear of the home. The photographs embedded in this document show the general layout of this home.

Front exterior view:



Front entrance:



RECEIVED

JAN 03 2023

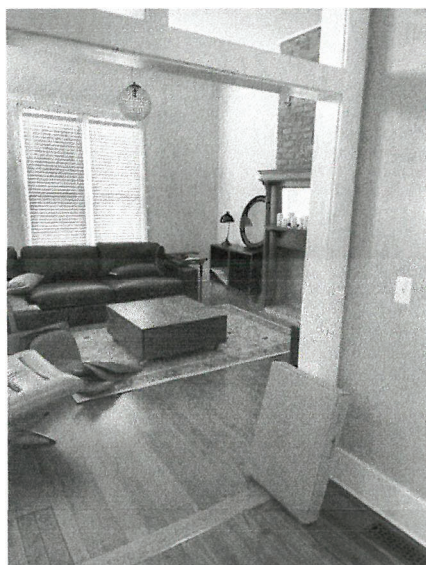
PLANNING & DESIGN  
SERVICES

23-LWP-0002

Kitchen/Dining area:



Living room (adjacent to the kitchen):



RECEIVED

JAN 03 2023

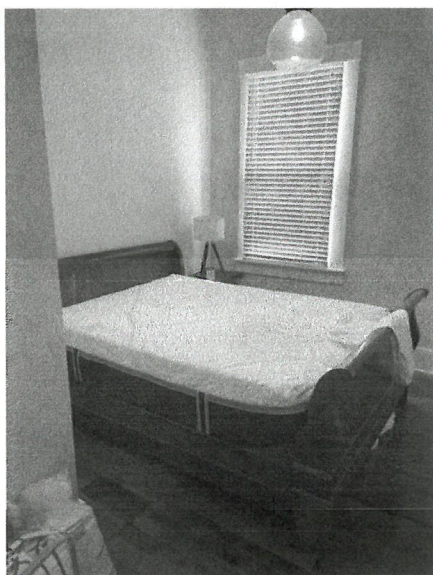
PLANNING & DESIGN  
SERVICES

23-CUP-0002

Hallway:



Bedroom #1:



RECEIVED

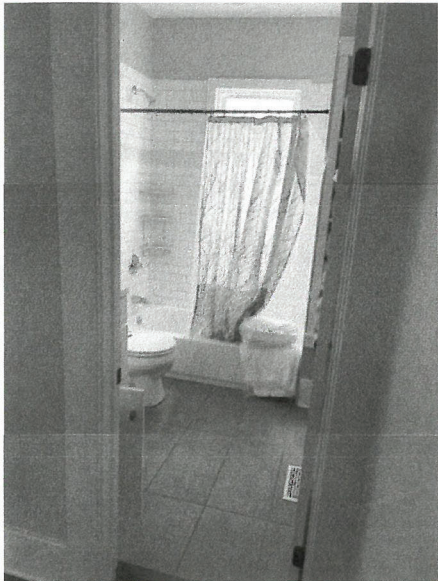
JAN 03 2023

PLANNING & DESIGN  
SERVICES

23-CUP-0002



Bathroom:



Bedroom #2:



RECEIVED

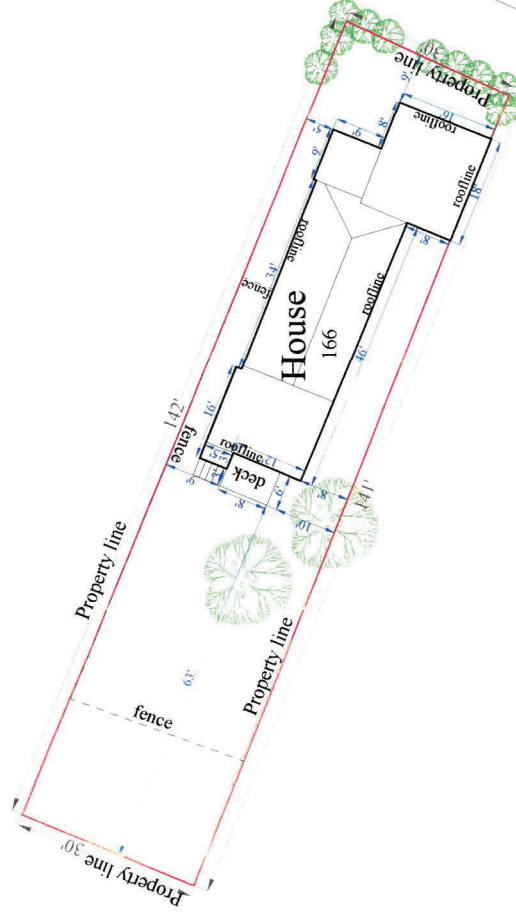
JAN 03 2023

PLANNING & DESIGN  
SERVICES

23-CUP-0002

# SITE PLAN

Address: 166 William St  
City, State, ZIP: Louisville, KY 40206  
County: USA  
Scale 1"=20'



William St

Embry St

RECEIVED  
MyPlan

JAN 03 2023

PLANNING & DESIGN  
SERVICES

23-010-0002