



**TRAPANI + ASSOCIATES ARCHITECTS**

2 BURLINGTON WOODS DRIVE  
SUITE 201  
BURLINGTON, MA 01803  
781.331.0429



**PROFESSIONAL STAMP**

**TEREX**  
BLANKENBAKER ROAD  
LOUISVILLE, KY 40299  
PROJECT NO. 40009

**PROJECT PHASE:**  
CDs

**REVISIONS**

NO.	DATE	DESCRIPTION

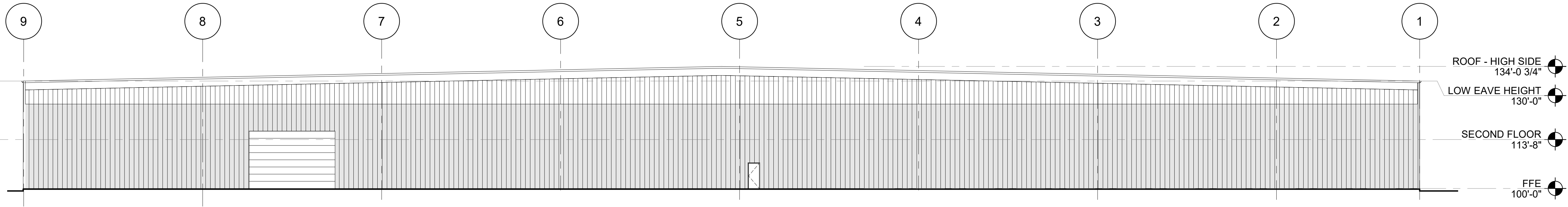
**EXTERIOR ELEVATIONS**

DATE: 05/05/23  
DRAWN: NA  
CHECKED: MP

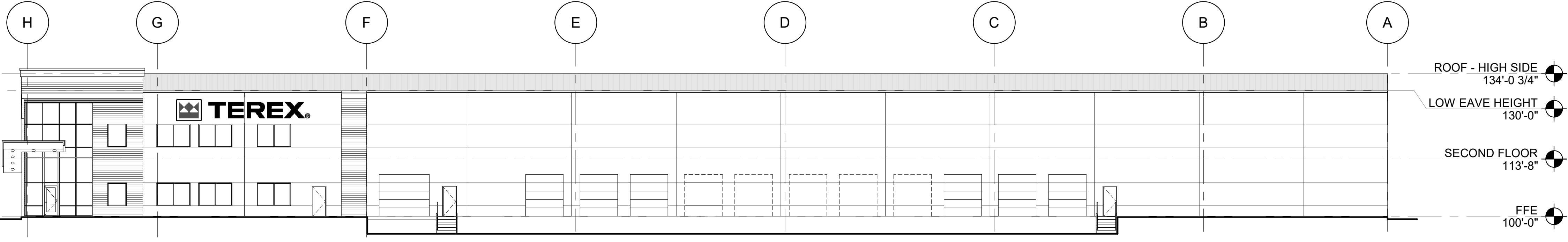
**A-8**

**LIMITED DRAWING SCOPE DISCLAIMER:**  
THE DRAWINGS IN THIS SET ARE OF A DESIGN/BUILD LEVEL AND DO NOT SHOW MOST INDIVIDUAL PRODUCT DETAILS, INSTALLATION, AND/OR ACCEPTED CONSTRUCTION PRACTICES. IN PARTICULAR THE BUILDING EXTERIOR ENVELOPE (ROOF, WALLS, WINDOWS, DOORS, JOINTS, SEALANT, ETC.) IS NOT FULLY DETAILED AND DOES NOT SHOW A COMPLETE WATERPROOF SYSTEM. ADDITIONAL DESIGN WORK AND INSTALLATION DETAILING WILL BE PERFORMED BY THE GENERAL CONTRACTOR AND HIS SUBCONTRACTORS TO ENSURE A COMPLETELY FUNCTIONAL AND WATER-TIGHT SYSTEM. IN ADDITION, THE INTERIOR SPACE MAY ALSO NEED ADDITIONAL DESIGN/INSTALLATION DETAILING BY THE GENERAL CONTRACTOR AND SUBCONTRACTOR TO ENSURE FUNCTIONAL AND PROPER USE OF EACH PRODUCT. ALL PRODUCT INSTALLATION SHALL BE IN ACCORDANCE WITH THE MANUFACTURER'S RECOMMENDATIONS AND ALL ACCEPTED INDUSTRY STANDARDS. THE GENERAL CONTRACTOR SHALL NOTIFY THE ARCHITECT OF ANY DISCREPANCIES WITH THESE DRAWINGS WITHIN THREE (3) BUSINESS DAYS OF DISCOVERY. THE GENERAL CONTRACTOR SHALL ALSO NOTIFY THE ARCHITECT OF ANY PROPOSED DEVIATIONS TO WHAT IS INDICATED ON THESE DRAWINGS PRIOR TO MAKING A CHANGE IN THE FIELD TO THE WORK INDICATED HEREIN.

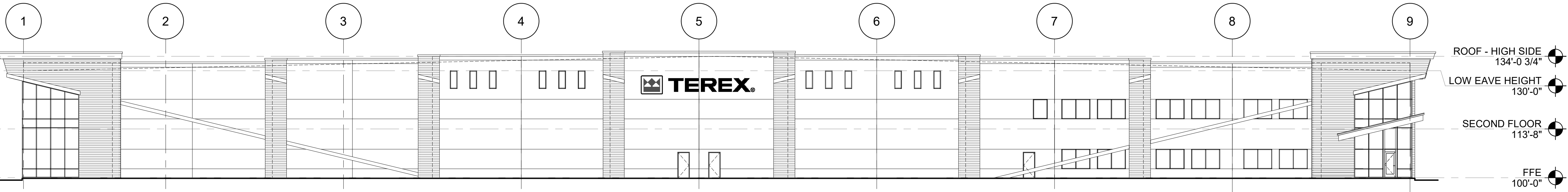
**NOTE:**  
THESE PLANS ARE SPECIFICALLY DESIGN AND DRAFTED FOR CONSTRUCTION BY LICHTEFELD, INC. THE PLANS ARE TAILORED FOR LICHTEFELD, INC. CONSTRUCTION PRACTICES. THE PLANS ARE INTENDED TO BE USED BY LICHTEFELD, INC. IN CONJUNCTION WITH THEIR SCOPE OF WORK AND THEIR COMMON CONSTRUCTION PRACTICES. THE DRAWINGS ARE NOT INTENDED FOR USE BY OTHERS.



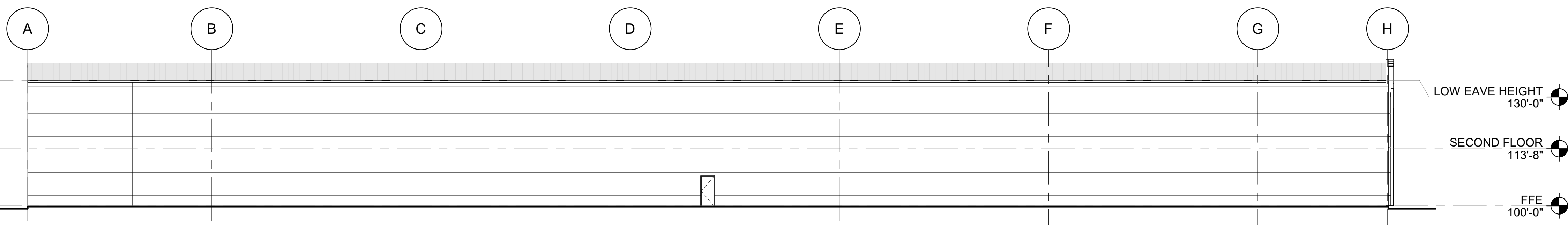
1 REAR VIEW  
1/16" = 1'-0"



2 RIGHT SIDE DOCK VIEW  
1/16" = 1'-0"



3 BLANKENBAKER ROAD VIEW  
1/16" = 1'-0"



4 LEFT SIDE VIEW  
1/16" = 1'-0"