

Planning Commission
Staff Report
September 11, 2023



Case No:	23-ZONE-0052
Project Name:	Farmgate Crossings
Location:	8204, 8212, 8302 and 8306 Glaser Ln
Owner(s):	Leisure Development, LLC
Applicant:	Leisure Development, LLC
Jurisdiction:	Louisville Metro
Council District:	23 – Jeff Hudson
Case Manager:	Jay Lockett, AICP, Planner II

REQUEST(S)

- **Change-in-Zoning** from R-4, Single family Residential to R-5 Single Family Residential
- **District Development Plan/Major Preliminary Subdivision Plan** with Binding Elements

CASE SUMMARY

The applicant is proposing to construct 43 buildable lots on approximately 14.22 acres. The site is located along Glaser Ln in the Highview area of Louisville Metro. New public roadways are proposed to connect to Glaser Ln as well as extend the stub street for Old Boundary Rd through the site. An intermittent stream known as Little Cedar Creek flows along the western side of the site. The stream area, along with associated flood prone areas and some existing trees are being preserved in open space.

STAFF FINDING

The proposal meets the guidelines of the Comprehensive Plan and requirements of the Land Development Code. The District Development Plan/Major Preliminary Subdivision Plan is adequately justified and meets the standards of review of the Land Development Code.

TECHNICAL REVIEW

The site is located within the Highview Neighborhood Plan (2015). That plan does not make any specific recommendation about the subject site.

Transportation Planning and MSD have approved the preliminary development plan.

INTERESTED PARTY COMMENTS

Please see attached citizen letters

STANDARD OF REVIEW FOR REZONING

Criteria for granting the proposed form district change/rezoning: *KRS Chapter 100.213*

1. The proposed form district/rezoning change complies with the applicable guidelines and policies Plan 2040; OR
2. The existing form district/zoning classification is inappropriate and the proposed classification is appropriate; OR
3. There have been major changes of an economic, physical, or social nature within the area involved which were not anticipated in Plan 2040 which have substantially altered the basic character of the area.

STAFF ANALYSIS FOR CHANGE IN ZONING

Following is staff's analysis of the proposed rezoning against the Guidelines and Policies of Plan 2040.

The site is located in the Neighborhood Form District

Neighborhood Form is characterized by predominantly residential uses that vary from low to high density and that blend compatibly into the existing landscape and neighborhood areas. High-density uses will be limited in scope to minor or major arterials and to areas that have limited impact on the low to moderate density residential areas.

The Neighborhood Form will contain diverse housing types in order to provide housing choice for differing ages, incomes and abilities. New neighborhoods are encouraged to incorporate these different housing types within a neighborhood as long as the different types are designed to be compatible with nearby land uses. These types may include, but not be limited to, large lot single family developments with cul-de-sacs, traditional neighborhoods with short blocks or walkways in the middle of long blocks to connect with other streets, villages and zero-lot line neighborhoods with open space, and high density multi-family housing.

The Neighborhood Form may contain open space and, at appropriate locations, civic uses and neighborhood centers with a mixture of uses such as offices, retail shops, restaurants and services. These neighborhood centers should be at a scale that is appropriate for nearby neighborhoods. The Neighborhood Form should provide for accessibility and connectivity between adjacent uses and neighborhoods by automobile, pedestrian, bicycle and transit.

Neighborhood streets may be either curvilinear, rectilinear or in a grid pattern and should be designed to support physical activity for all users and invite human interaction. Streets are connected and easily accessible to each other, using design elements such as short blocks or bike/walkways in the middle of long blocks to connect with other streets. Examples of design elements that encourage this interaction include narrow street widths, street trees, sidewalks, shaded seating/gathering areas and bus stops. Placement of utilities should permit the planting of shade trees along both sides of the streets.

The proposal would permit additional housing options in an established residential area near a variety of services, amenities and employment opportunities. The proposal is for single-family housing and is compatible with adjacent development. The proposed zoning district would permit smaller lot sizes and a more flexible lotting pattern than the existing district, allowing for the clustering of homes away from environmentally sensitive areas of the site. The proposal preserves approximately 37% of the site as open space, including a stream course, flood prone areas and a stand of mature tree canopy. All

required roadway improvements, including extension of existing stub streets and sidewalks are being provided.

All other agency comments should be addressed to demonstrate compliance with the remaining Guidelines and Policies of Plan 2040.

A checklist is attached to the end of this staff report with a more detailed analysis. The Louisville Metro Planning Commission is charged with making a recommendation to the Louisville Metro Council regarding the appropriateness of this zoning map amendment. The Louisville Metro Council has zoning authority over the property in question.

STANDARD OF REVIEW AND STAFF ANALYSIS FOR DDP

- a. The conservation of natural resources on the property proposed for development, including: trees and other living vegetation, steep slopes, water courses, flood plains, soils, air quality, scenic views, and historic sites;

STAFF: An intermittent stream known as Little Cedar Creek flows along the western side of the site. The stream area, along with associated flood prone areas and some existing trees are being preserved in open space. Tree canopy requirements of the Land Development Code will be provided on the subject site.

- b. The provisions for safe and efficient vehicular and pedestrian transportation both within the development and the community;

STAFF: Provisions for safe and efficient vehicular and pedestrian transportation within and around the development and the community has been provided, and Metro Public Works and the Kentucky Transportation Cabinet have approved the preliminary development plan.

- c. The provision of sufficient open space (scenic and recreational) to meet the needs of the proposed development;

STAFF: There are no open space requirements pertinent to the current proposal. Approximately 37 percent of the site is proposed as open space.

- d. The provision of adequate drainage facilities on the subject site in order to prevent drainage problems from occurring on the subject site or within the community;

STAFF: The Metropolitan Sewer District has approved the preliminary development plan and will ensure the provision of adequate drainage facilities on the subject site in order to prevent drainage problems from occurring on the subject site or within the community.

- e. The compatibility of the overall site design (location of buildings, parking lots, screening, landscaping) and land use or uses with the existing and projected future development of the area;

STAFF: The overall site design and land uses are compatible with the existing and future development of the area. Buildings will meet all required setbacks.

- f. Conformance of the development plan with the Comprehensive Plan and Land Development Code. Revised plan certain development plans shall be evaluated for conformance with the non-residential and mixed-use intent of the form districts and comprehensive plan.

STAFF: The development plan conforms to applicable guidelines and policies of the Comprehensive Plan and to requirements of the Land Development Code.

REQUIRED ACTIONS:

- **RECOMMEND** that the Louisville Metro Council **APPROVE** or **DENY** the **Change-in-Zoning** from R-4 single family to R-5 single family.
- **APPROVE** or **DENY** the **Detailed District Development Plan/Major Preliminary Subdivision Plan** with binding elements.

Based upon the information in the staff report, the testimony and evidence provided at the public hearing, the Planning Commission must determine if the proposal is in conformance with the Comprehensive Plan; OR the existing form district/zoning classification is inappropriate and the proposed classification is appropriate; OR if there have been major changes of an economic, physical, or social nature within the area involved which were not anticipated in Plan 2040 which have substantially altered the basic character of the area.

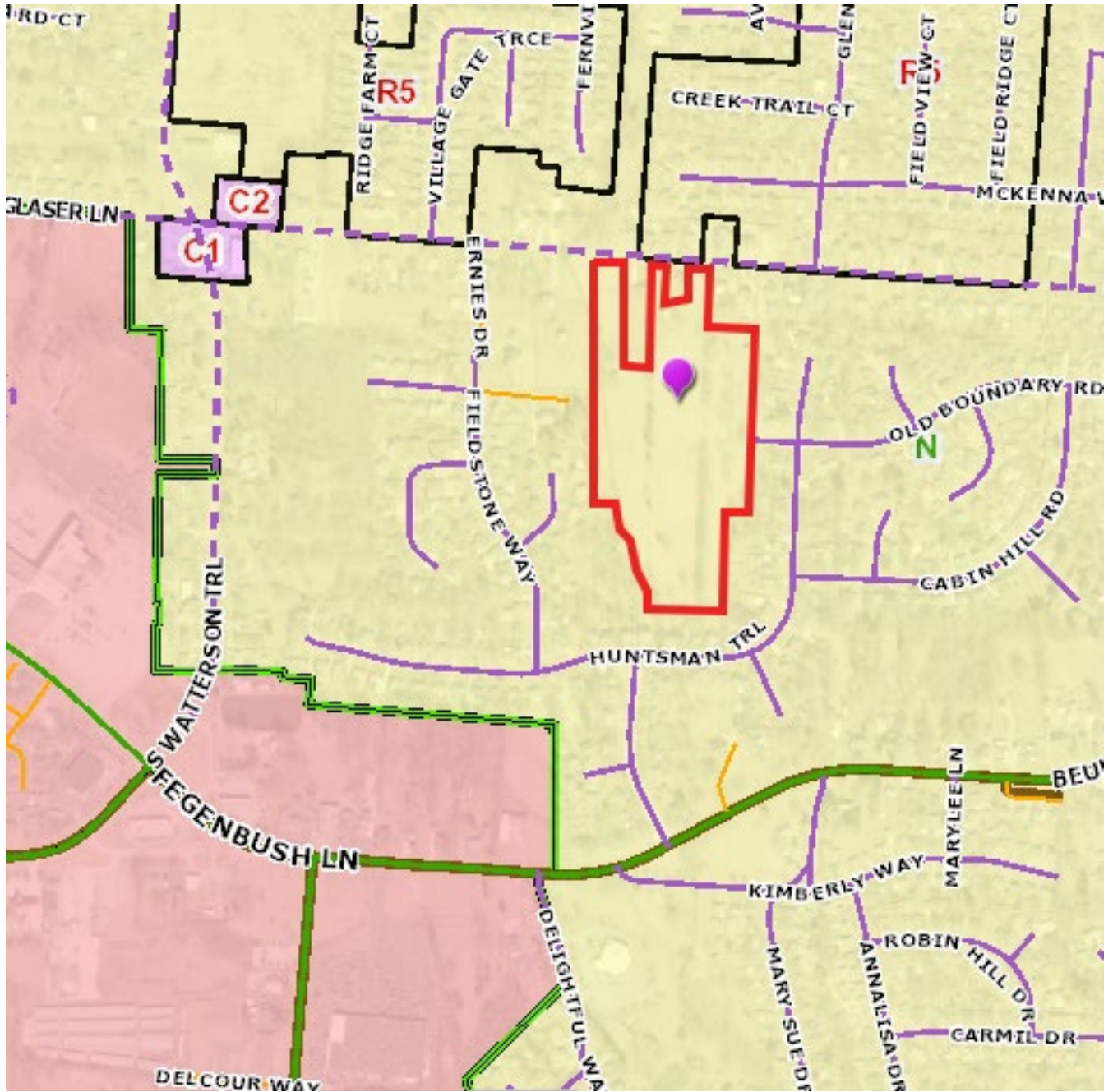
NOTIFICATION

Date	Purpose of Notice	Recipients
8-8-23	Hearing before LD&T	1 st and 2 nd tier adjoining property owners and current residents Speakers at Planning Commission public hearing Registered Neighborhood Groups in Council District 23
8-25-23	Hearing before PC	1 st and 2 nd tier adjoining property owners and current residents Speakers at Planning Commission public hearing Registered Neighborhood Groups in Council District 23
8-14-23	Hearing before PC	Sign Posting on property
8-30-23	Hearing before PC	Legal Advertisement in the Courier-Journal

ATTACHMENTS

1. Zoning Map
2. Aerial Photograph
3. Staff Plan 2040 Checklist
4. Proposed Binding Elements

1. Zoning Map



2. Aerial Photograph



3. Staff Plan 2040 Checklist

- + Exceeds Guideline
- ✓ Meets Guideline
- Does Not Meet Guideline
- +/- More Information Needed
- NA Not Applicable

Neighborhood: Residential

#	Plan 2040 Plan Element	Land Use & Development Policy	Staff Finding	Staff Analysis
1	Land Use & Development Goal 1: Community Form	7. Locate higher density and intensity uses near major transportation facilities and transit corridors, employment centers, in or near activity centers and other areas where demand and adequate infrastructure exists or is planned.	✓	The subject site is located along Glaser Ln, a primary collector. Beulah Church Rd is the nearest arterial roadway approximately 3500 feet to the east. Outer Loop and Fegenbush Ln form a core intersection within the Hightview Planned Development District and is about 3700 feet to the west and south via Watterson Trl. Transit service as well as a wide variety of services and employment opportunities are available in the PD area.
2	Land Use & Development Goal 1: Community Form	9. Ensure an appropriate transition between uses that are substantially different in scale and intensity or density of development. The transition may be achieved through methods such as landscaped buffer yards, vegetative berms, compatible building design and materials, height restrictions and setback requirements.	✓	The proposal is for single-family housing and is compatible with adjacent development.
3	Land Use & Development Goal 2: Community Form	9. Encourage new developments and rehabilitation of buildings that provide commercial, office and/or residential uses.	✓	The proposed zoning change would allow for additional housing options in the area.
4	Land Use & Development Goal 3: Community Form	10. Encourage development to avoid wet or highly permeable soils, severe, steep or unstable slopes where the potential for severe erosion problems exists in order to prevent property damage and public costs associated with soil slippage and foundation failure and to minimize environmental degradation.	✓	The site does not have potential for wet or unstable soils. There is an intermittent stream and associated floodplain on the western portion of the site being preserved within open space.
5	Land Use & Development Goal 4: Community Form	2. Encourage preservation of distinctive cultural features including landscapes, natural elements and built features.	✓	The proposed development preserves approximately 37% of the site as open space, including a stream course, flood prone areas and a stand of mature tree canopy.

#	Plan 2040 Plan Element	Land Use & Development Policy	Staff Finding	Staff Analysis
6	Land Use & Development Goal 4: Community Form	3. Encourage preservation and/or adaptive reuse of historic sites listed on or eligible for the National Register of Historic Places and/or recognized by the Louisville Metro Landmarks Commission or other national, state or local government historic preservation agencies.	✓	The site does not have historic resources on the subject site.
7	Land Use & Development Goal 1: Mobility	4. Encourage higher densities and intensities within or near existing marketplace corridors, existing and future activity centers, and employment centers to support transit-oriented development and an efficient public transportation system.	✓	The site is approximately 1800 feet from the Highview Town Center Planned Development District, which contains a wide variety of services, amenities and employment opportunities. Transit service is available within a mile of the site in the PD area.
8	Land Use & Development Goal 2: Mobility	4. Avoid access to development through areas of significantly lower intensity or density development if such access would create significant nuisances.	✓	The site proposes private access directly from Glaser Ln as well as extending the stub street for Old Boundary Rd.
9	Land Use & Development Goal 3: Mobility	2. To improve mobility, and reduce vehicle miles traveled and congestion, encourage a mixture of compatible land uses that are easily accessible by bicycle, car, transit, pedestrians and people with disabilities. Housing should be encouraged near employment centers.	✓	The proposed zoning district would allow for additional housing options within an area near employment opportunities and a commercial corridor.
10	Land Use & Development Goal 3: Mobility	5. Evaluate developments for their impact on the transportation network (including the street, pedestrian, transit, freight movement and bike facilities and services) and air quality.	✓	Transportation Planning has approved the preliminary development plan. All required roadway improvements, including extension of existing stub streets and sidewalks are being provided.
11	Land Use & Development Goal 3: Mobility	6. Ensure that those who propose new developments bear or share in rough proportionality the costs of transportation facilities and services made necessary by development.	✓	Transportation Planning has approved the preliminary development plan. All required roadway improvements, including extension of existing stub streets and sidewalks are being provided.
12	Land Use & Development Goal 3: Mobility	9. When existing transportation facilities and services are inadequate and public funds are not available to rectify the situation, the developer may be asked to make improvements, roughly proportional to the projected impact of the proposed development, to eliminate present inadequacies if such improvements would be the only means by which the development would be considered appropriate at the proposed location.	✓	Transportation Planning has approved the preliminary development plan. All required roadway improvements, including extension of existing stub streets and sidewalks are being provided.

#	Plan 2040 Plan Element	Land Use & Development Policy	Staff Finding	Staff Analysis
13	Land Use & Development Goal 3: Mobility	10. Ensure that necessary improvements occur in accordance with long-range transportation plans and level of mobility criteria for all modes of travel.	✓	Transportation Planning has approved the preliminary development plan. All required roadway improvements, including extension of existing stub streets and sidewalks are being provided.
14	Land Use & Development Goal 3: Mobility	21. Prevent safety hazards caused by direct residential access to high speed roadways.	✓	The proposal includes a new public roadway network.
15	Land Use & Development Goal 2: Community Facilities	1. Locate development in areas served by existing utilities or capable of being served by public or private utility extensions.	✓	Utility services will be coordinated.
16	Land Use & Development Goal 2: Community Facilities	2. Ensure that all development has an adequate supply of potable water and water for fire-fighting purposes. Locate only very low-density land uses on sites that use on-lot sewage disposal systems or on a private supply of potable water.	✓	Water service will be coordinated with appropriate agencies.
17	Land Use & Development Goal 2: Community Facilities	3. Ensure that all development has adequate means of sewage treatment and disposal to protect public health and to protect water quality in lakes and streams as determined by the Metropolitan Sewer District (MSD).	✓	MSD has reviewed and approved the preliminary development plan.
18	Land Use & Development Goal 1: Livability	5. Encourage development that recognizes and incorporates the unique characteristics of identified general landscape types and native plant communities (e.g., upland hardwood forest) throughout Louisville Metro.	✓	The proposal preserves approximately 37% of the site as open space, including a stream course, flood prone areas and a stand of mature tree canopy.
19	Land Use & Development Goal 1: Livability	17. Determine site susceptibility to erosion; identify the presence of on-site carbonate conditions and features that are vulnerable to site disturbance; identify the extent of existing groundwater use and the impacts of the project on groundwater resources, flow patterns, and existing and proposed surface drainage. Then mitigate potential hazards to such systems resulting from the project.	✓	A karst survey was performed on the subject site and no karst features were observed.
20	Land Use & Development Goal 1: Livability	21. Mitigate negative development impacts to the integrity of the regulatory floodplain by encouraging development patterns that minimize disturbance and consider the increased risk of more frequent flooding events.	✓	MSD has reviewed and approved the preliminary development plan.

#	Plan 2040 Plan Element	Land Use & Development Policy	Staff Finding	Staff Analysis
21	Land Use & Development Goal 1: Housing	1. Encourage a variety of housing types including, but not limited to, detached and attached single family, multi-family, mixed use, zero lot line, average lot, cluster, and co-housing. Allow for accessory residential structures and apartments. Housing types should reflect the Form District pattern.	✓	The proposed zoning would allow for a variety of lotting patterns, clustering homes away from environmentally sensitive portions of the site. The development will fit within the residential development pattern of the district, which has a variety of residential zoning districts, densities and housing types.
22	Land Use & Development Goal 1: Housing	2. Promote housing options and environments that support aging in place. Encourage housing for older adults and people with disabilities to be located close to shopping and transit routes and, when possible, medical and other supportive facilities.	✓	The proposed zoning district will help promote aging in place by providing additional housing options. The site is close to a variety of commercial uses and services.
23	Land Use & Development Goal 2: Housing	1. Encourage inter-generational, mixed-income and mixed-use development that is connected to the neighborhood and surrounding area.	✓	The proposed zoning district would promote mixed income and intergenerational development by allowing for additional housing options in an area with access to a variety of commercial services, amenities and employment opportunities.
24	Land Use & Development Goal 2: Housing	2. Locate housing within proximity to multi-modal transportation corridors providing safe and convenient access to employment opportunities, as well as within proximity to amenities providing neighborhood goods and services. Higher density, accessible residential uses should be located along transit corridors and in or near activity centers.	✓	The site has access to a transportation network that provides safe and convenient access to employment opportunities, services and amenities.
25	Land Use & Development Goal 3: Housing	1. Encourage provision of fair and affordable housing by providing a variety of ownership options and unit costs throughout Louisville Metro. Expand opportunities for people to live in quality, variably priced housing in locations of their choice by encouraging affordable and accessible housing in dispersed locations throughout Louisville Metro.	✓	The proposed zoning encourages the provision of fair and affordable housing by allowing for a variety of housing types, ownership options, lotting patterns and unit sizes.
26	Land Use & Development Goal 3: Housing	2. As neighborhoods evolve, discourage displacement of existing residents from their community.	✓	No existing residents will be displaced.
27	Land Use & Development Goal 3: Housing	3. Encourage the use of innovative methods such as clustering, mixed-use developments, co-housing, and accessory apartments to increase the production of fair and affordable housing.	✓	The proposed zoning would allow for a variety of lotting patterns, allowing for production of fair and affordable housing.

4. Proposed Binding Elements

1. The development shall be in accordance with the approved district development plan, all applicable sections of the Land Development Code (LDC) and agreed upon binding elements unless amended pursuant to the Land Development Code. Any changes/additions/alterations of any binding element(s) shall be submitted to the Planning Commission or the Planning Commission's designee for review and approval; any changes/additions/alterations not so referred shall not be valid.
2. The development shall be in accordance with the approved Preliminary Subdivision Plan. No further subdivision of the land into a greater number of lots than originally approved shall occur without approval of the Planning Commission.
3. Construction fencing shall be erected when off-site trees or tree canopy exists within 3' of a common property line. Fencing shall be in place prior to any grading or construction to protect the existing root systems from compaction. The fencing shall enclose the entire area beneath the tree canopy and shall remain in place until all construction is completed. No parking, material storage or construction activities are permitted within the protected area.
4. All street signs shall be installed by the Developer and shall conform with the Manual on Uniform Traffic Control Devices (MUTCD) requirements. Street signs shall be installed prior to the recording of the subdivision record plat or occupancy of the first residence on the street and shall be in place at the time of any required bond release. The address number shall be displayed on a structure prior to requesting a certificate of occupancy for that structure.
5. Open space lots shall not be further subdivided or developed for any other use and shall remain as open space in perpetuity. A note to this effect shall be placed on the record plat.
6. The developer shall be responsible for maintenance of all drainage facilities and undeveloped lots ensuring prevention of mosquito breeding, until such time as the drainage bond is released.
7. After release of the drainage bond, mosquito abatement on open space lots shall be the responsibility of the Homeowners Association. Accumulations of water in which mosquito larvae breed or have the potential to breed are required to be treated with a mosquito larvicide approved by the Louisville Metro Health Department. Larvicides shall be administered in accordance with the product's labeling. This language shall appear in the deed of restrictions for the subdivision.
8. Trees will be preserved and/or provided on site and maintained thereafter as required by Chapter 10, Part 1 of the Land Development Code and as indicated in the Tree Canopy Calculations on the Preliminary Subdivision Plan. The applicant shall submit a landscape plan for approval by Planning Commission staff for any trees to be planted to meet the Tree Canopy requirements of Chapter 10, Part 1 of the Land Development Code. A tree preservation plan shall be submitted for review and approval for any trees to be preserved to meet the Tree Canopy requirements of Chapter 10.
9. The applicant shall submit a landscape plan for approval by Planning Commission staff showing plantings and/or other screening and buffering materials to comply with the Chapter 10 of the Land Development Code prior to recording the record plat. The applicant shall provide the landscape materials on the site as specified on the approved Landscape Plan prior to issuance of Certificates of Occupancy for the site.

10. Prior to the recording of the record plat, copies of the recorded documents listed below shall be filed with the Planning Commission.
 1. Articles of Incorporation in a form approved by Counsel for the Planning Commission and the Certificate of Incorporation of the Homeowners Association.
 2. A deed of restriction in a form approved by counsel of the Commission outlining responsibilities for the maintenance of open space.
 3. Bylaws of the Homeowners' Association in a form approved by Counsel for the Planning Commission.
11. At the time the developer turns control of the homeowners association over to the homeowners, the developer shall provide sufficient funds to ensure there is no less than \$3,000 cash in the homeowners association account. The subdivision performance bond may be required by the planning Commission to fulfill this funding requirement.
12. If proposed, the signature entrance shall be submitted to the Planning Commission staff for review and approval prior to recording the record plat.