

**WRITTEN DESCRIPTION
FOR
CHANGE IN ZONING
AT**

7504, 7506 & 7508 BEULAH CHURCH ROAD, LOUISVILLE, KY

TRACT 1: R-4 TO REMAIN

BEGINNING at the southwest corner of Lot 11 of The Woods of Apple Valley, Section 1 of record in Plat and Subdivision Book 39, Page 82, in the Office of the Clerk of Jefferson County, Kentucky; thence **S84°29'32"E, 411.73'** to a point; thence **S04°30'02"W, 200.41'** to a point; thence **S84°23'32"E, 460.62'** to a point; thence **S05°40'34"W, 163.28'** to a point; thence **N84°19'26"W, 245.25'** to a point; thence **S04°54'36"W, 104.09'** to a point; thence **S25°09'08"W, 130.21'** to a point; thence **S77°58'55"W, 122.79'** to a point; thence **N84°21'03"W, 466.09'** to a point; thence **N05°06'59"E, 626.30'** to the point of **BEGINNING**, containing 8.82 acres.

TRACT 2: R-4 TO R-5A

Beginning at the southwest corner of Tract 2 of the Minor Subdivision Plat approved by the Louisville and Jefferson County Planning Commission under Docket Number 273-99 and as recorded by Deed of record in Deed Book 7364, Page 807, in the Office of the Clerk of Jefferson County, Kentucky; thence **S84°23'32"E, 460.62'** to the **TRUE POINT OF BEGINNING** of the tract being described hereon; thence **S84°23'32"E, 332.20'** to a point; thence **N04°44'16"E, 198.02'** to a point; thence **S84°33'41"E, 399.50'** to a point in the centerline of Beulah Church Road; thence with said centerline **S04°58'52"W, 529.00'** to a point; thence leaving said centerline **N84°21'03"W, 300.00'** to a point; thence **S04°58'52"W, 98.00'** to a point; thence **N84°21'03"W, 1306.40'** to a point; thence **N77°58'55"E, 122.79'** to a point; thence **N25°09'08"E, 130.21'** to a point; thence **N04°54'36"E, 104.09'** to a point; thence **S84°19'26"E, 245.25'** to a point; thence **N05°40'34"E, 163.28'** to the **TRUE POINT OF BEGINNING**, containing 9.97 acres.

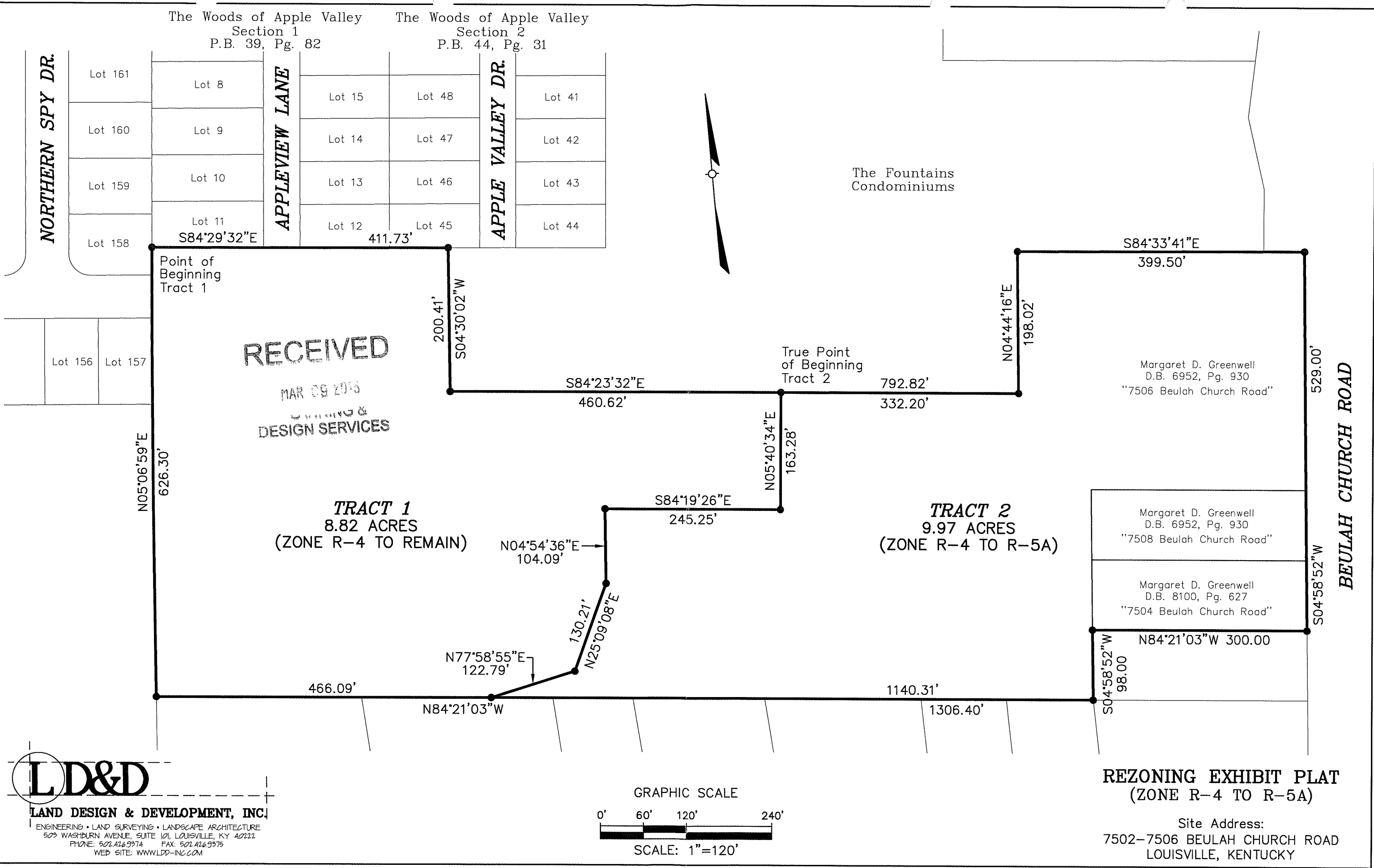
RECEIVED

MAR 09 2010

ENGINEERING &
DESIGN SERVICES

1420NE1057

G:\Current Projects\1456.dwg\PLANNING\EXHIBIT\LAND\RECORD\04-11-15.dwg, 3/8/2015, 11:52:13 AM, \\PDS8726\Office Printer, 11



LD&D
LAND DESIGN & DEVELOPMENT, INC.
ENGINEERING • LAND SURVEYING • LANDSCAPE ARCHITECTURE
509 WASHBURN AVENUE, SUITE 101, LOUISVILLE, KY 40212
PHONE: 502.426.9374 FAX: 502.426.9375
WEB SITE: WWW.LDD-INC.COM