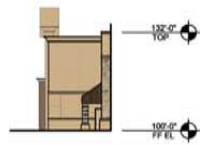
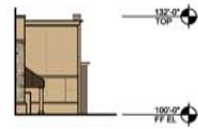




REAR GARDEN CENTER ELEVATION



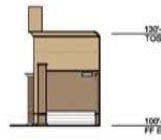
VESTIBULE SIDE ELEVATION



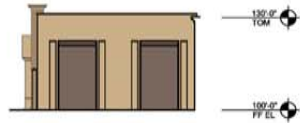
VESTIBULE SIDE ELEVATION



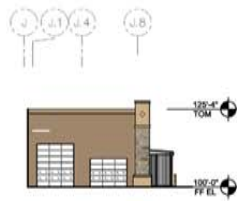
VESTIBULE SIDE ELEVATION



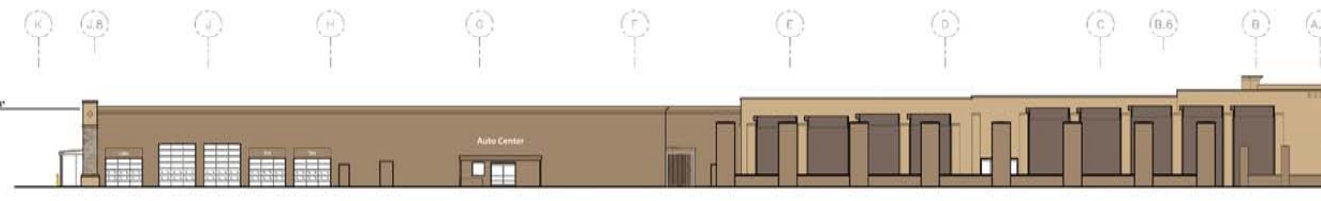
VESTIBULE SIDE ELEVATION



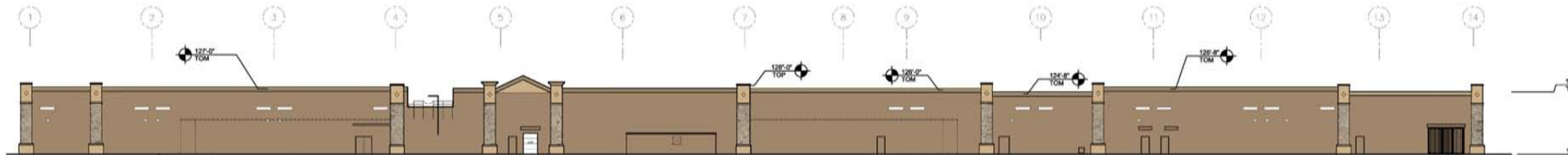
SIDE GARDEN CENTER ELEVATION



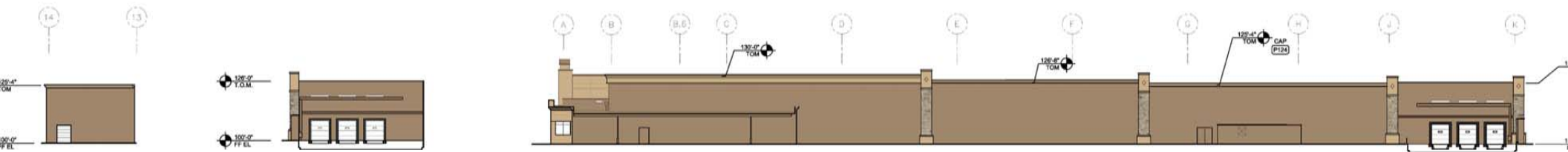
REAR AUTO CENTER ELEVATION



LEFT ELEVATION



REAR ELEVATION



RIGHT ELEVATION



FRONT ELEVATION



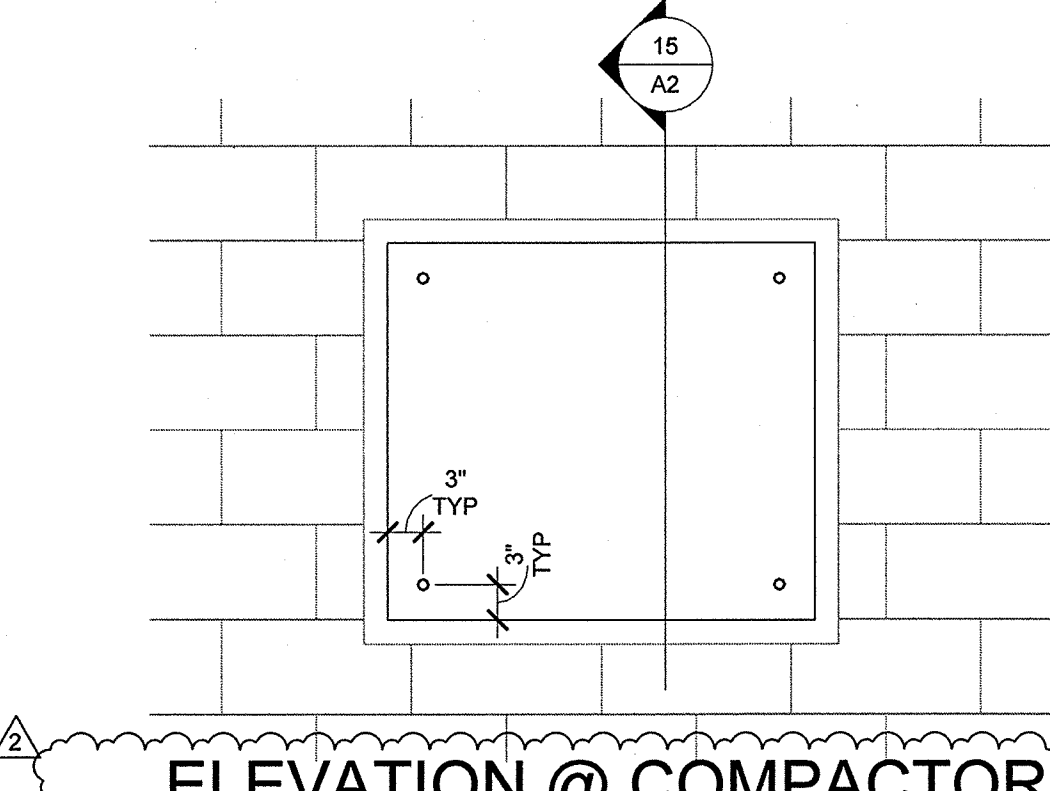
SW 6082
Cobble Brown
P83



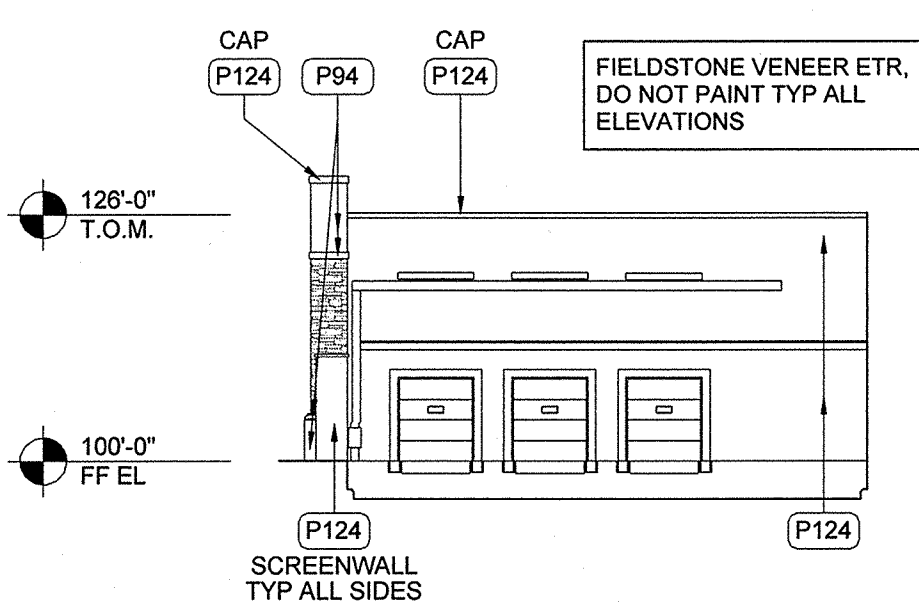
SW 7694 EXT
Exterior Dromedary Camel
P94



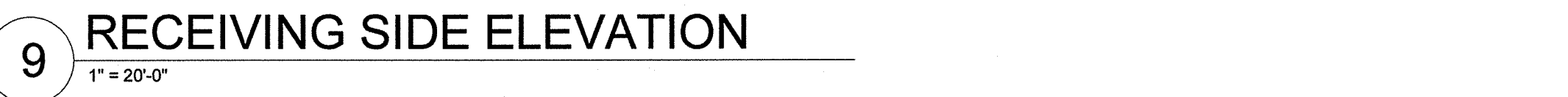
SW 7522
Meadowlark
P124



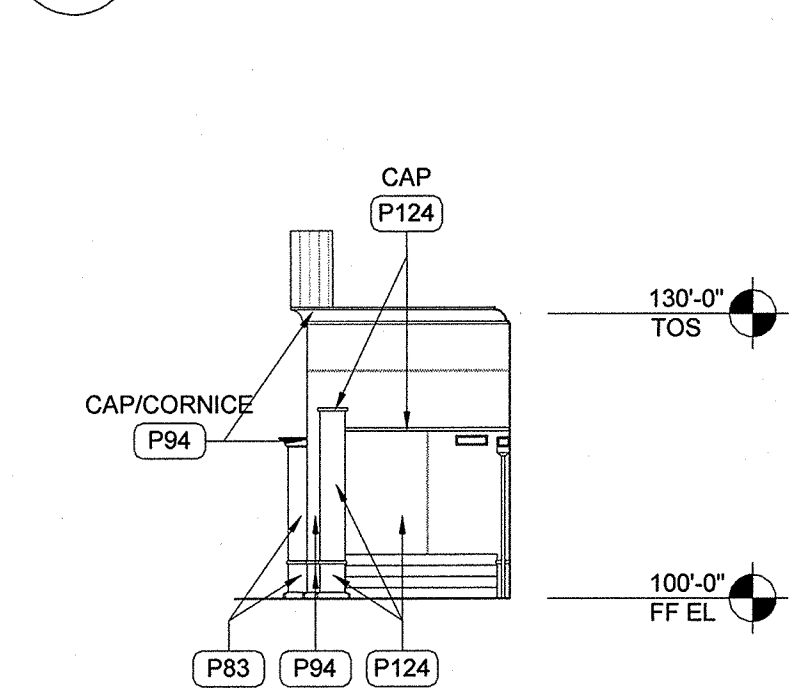
13 SIDE AUTO CENTER ELEVATION



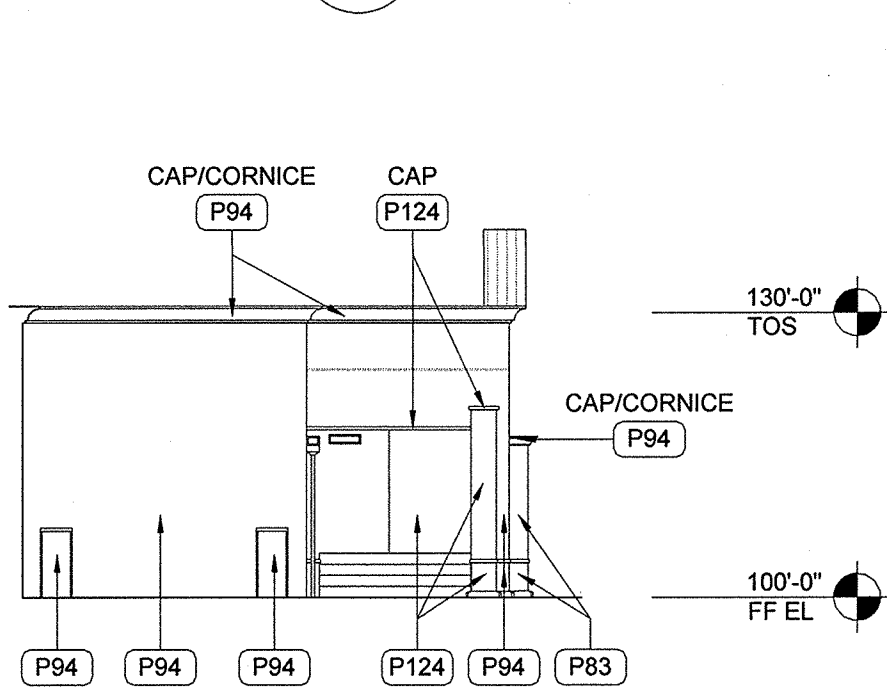
RECEIVING SIDE ELEVATION



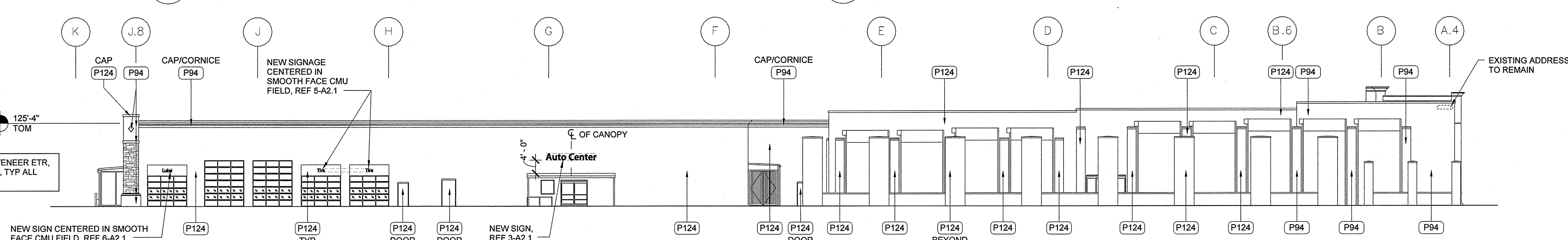
12 TIRE & BATTERY STORAGE ELEVATION
1" = 20'-0"



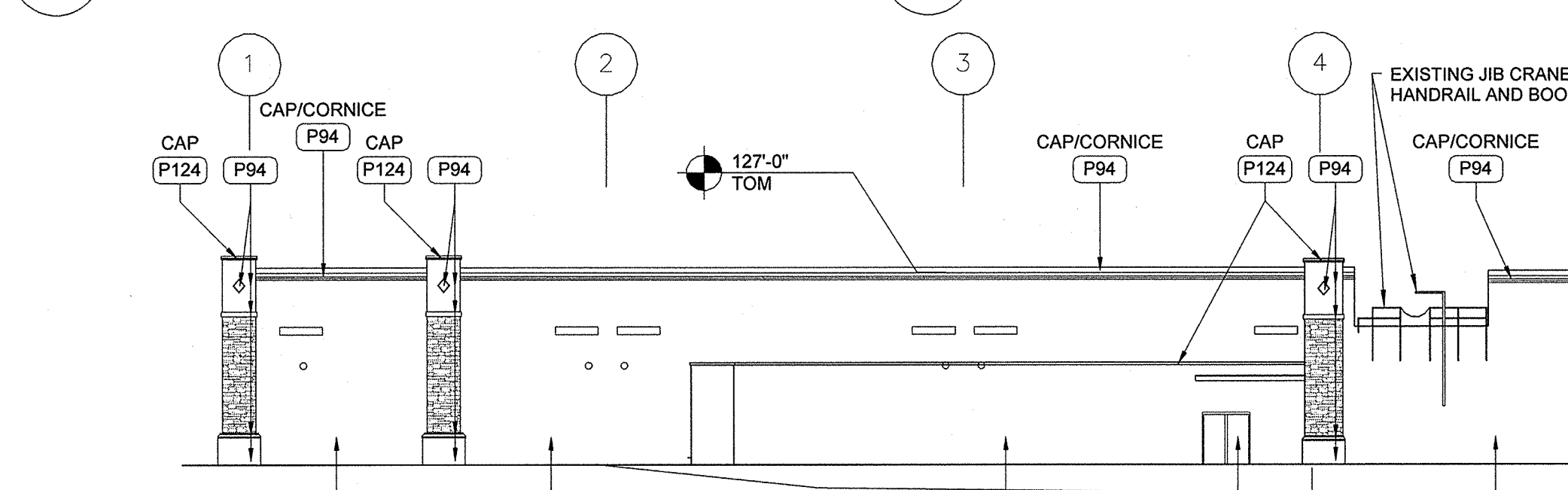
8 CART STORAGE - GF
SIDE ELEVATION
1" = 20'-0"



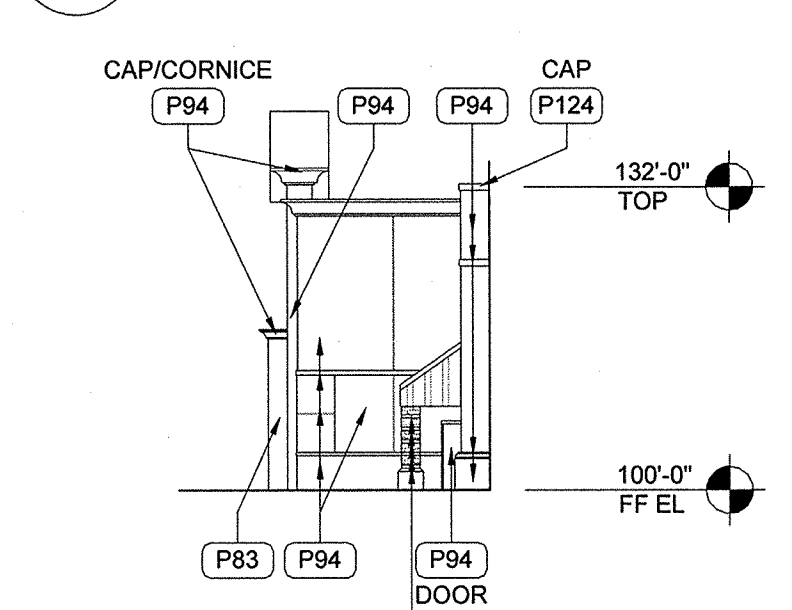
CART STORAGE - GM
SIDE ELEVATION



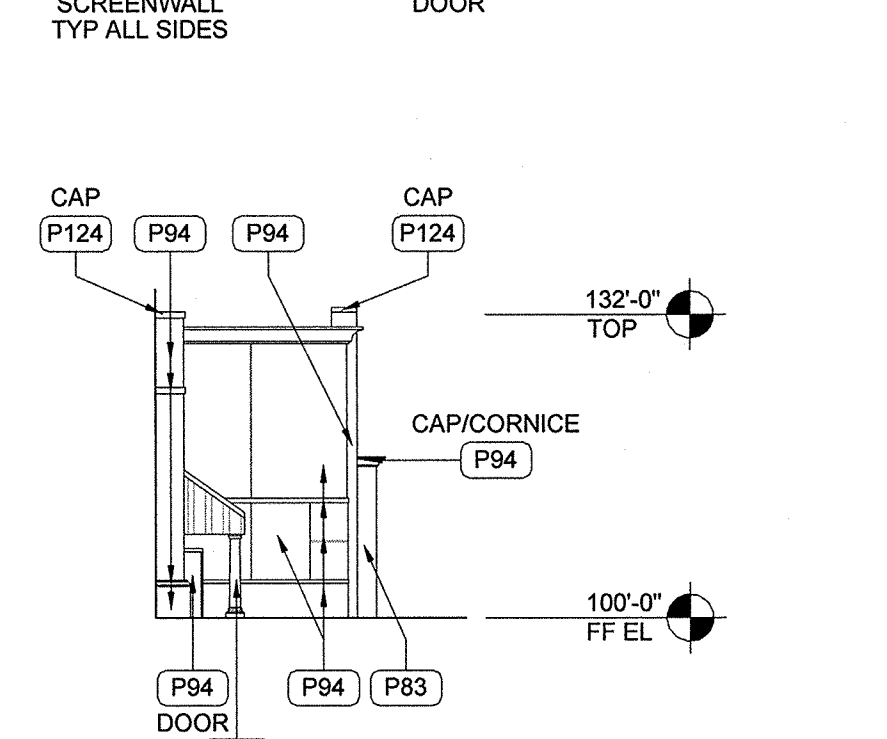
6 LEFT ELEVATION
1" = 20'-0"



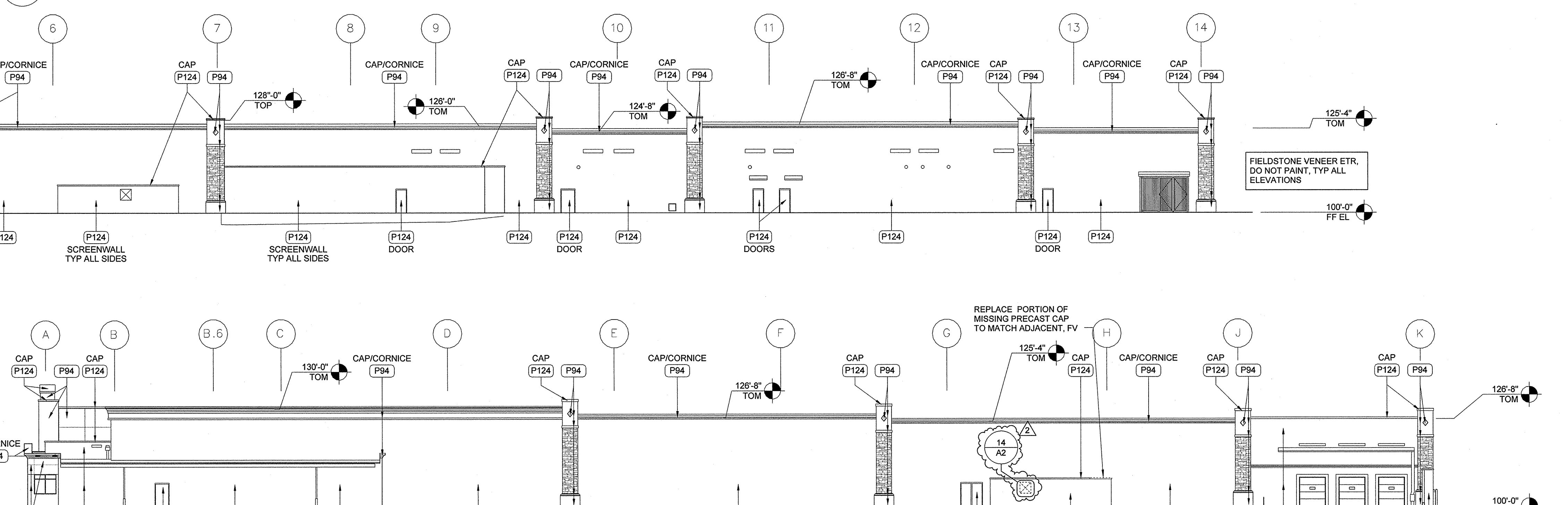
5 REAR ELEVATION



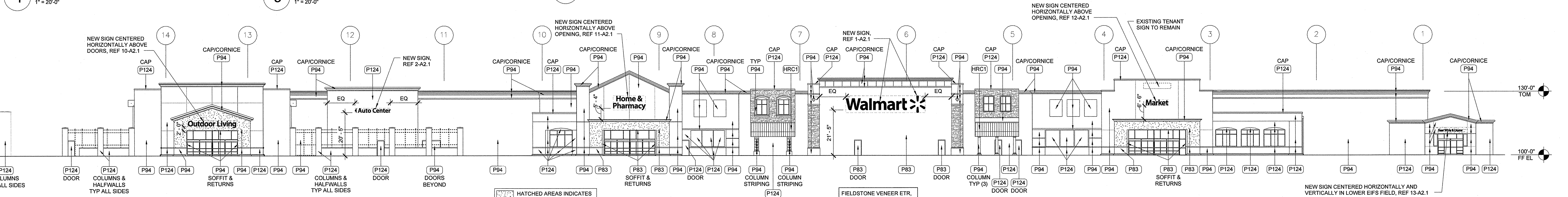
4 VESTIBULE - GM SIDE
ELEVATION
1" = 20'-0"



3 VESTIBULE - GR SIDE
ELEVATION
1" = 20'-0"



2 RIGHT ELEVATION



1 FRONT ELEVATION
1" = 20'-0"

COLOR LEGEND	DEMOLITION NOTES	SHEET NOTES
<p>P5 OSHA Standard "Safety Yellow"</p> <p>P21 SW# 4081 "Safety Red"</p> <p>P33 SW# 6385 "Dover White"</p> <p>P36 SW# 6869 "Dominio"</p> <p>P81 SW# 6258 "Tricorn Black"</p> <p>P83 SW# 6082 "Cobble Brown"</p> <p>P94 SW# 7694 (EXT) "Exterior Dromedary Camel"</p> <p>P124 SW# 7522 "Meadowlark"</p> <p>(HRC1) BROWN</p> <p>REF SPECIFICATIONS</p>	<p>1. REMOVE ALL UNLIT EXTERIOR STUD MOUNTED BUILDING SIGNS.</p> <p>2. REMOVE ALL UNLIT AND LIT ID/LOGO SIGNS. COORDINATE WITH WALMART CONSTRUCTION MANAGER PRIOR TO PERFORMING WORK.</p> <p>3. NOT USED</p> <p>4. NOT USED</p> <p>5. NOT USED</p> <p>6. NOT USED</p> <p>7. REMOVAL OF BUILDING MOUNTED ITEMS, SHOWN OR NOTED TO BE DEMOLISHED OR AS REQUIRED BY SCOPE OF WORK, SHALL OCCUR PRIOR TO PAINTING BUILDING. COORDINATE DEMOLITION WORK SO EXTERIOR PAINTING WILL OCCUR PRIOR TO INSTALLATION OF BUILDING MOUNTED ITEMS.</p>	<p>1. POWER WASH 100% OF EXTERIOR WALLS PRIOR TO PAINTING.</p> <p>2. PATCH AND REPAIR EXTERIOR WALL SURFACES, DAMAGED OR COMPROMISED DUE TO REMOVAL OF BUILDING MOUNTED ITEMS, TO MATCH ADJACENT AS REQUIRED.</p> <p>3. REMOVE SEALANT AND BACKER MATERIAL FROM ALL BUILDING CONTROL JOINTS AND EXPANSION JOINTS. FILL AND SEAL JOINTS, REF SPEC 07000</p> <p>4. REFER TO DETAILS ON SHEET A2.1 FOR SUBSTRATE AND FINISH REQUIREMENTS AT LOCATIONS OF BUILDING MOUNTED SIGNS.</p> <p>5. RESURFACE EXISTING EIFS WHERE SHOWN (HATCHED AREA)</p> <p>6. NOT USED</p> <p>7. PAINT EXTERIOR OF BUILDING AS SHOWN. PRIOR TO PAINTING WALL AT LOCATION(S) OF LIT ID/LOGO SIGNS), COORDINATE SCOPE OF WORK UNDERSIDE OF CANOPY DECK.</p> <p>8. PAINT DOOR HOODS, HOLLOW METAL STEEL DOORS AND FRAMES, GUTTERS AND DOWNSPOUTS, EXPOSED METAL FLASHING, HANDRAILS, GAS LINES, AND EXPOSED MISCELLANEOUS STEEL TO MATCH ADJACENT BUILDING COLOR UNDO.</p> <p>9. PAINT CANOPY STRUCTURAL STEEL AND FLASHING TO MATCH ADJACENT WALL.</p> <p>10. WHERE CANOPIES ARE VISIBLE TO AND ACCESSED BY CUSTOMERS, PAINT UNDERSIDE OF CANOPY DECK P33. DO NOT PAINT CANOPY DECK IF NOT PREVIOUSLY PAINTED.</p> <p>11. PAINT JIB CRANE - P36 ON JIB BOOM, P5 ON HANDRAILS.</p> <p>12. PAINT SPRINKLER VALVES P21. DO NOT PAINT OVER SIGHT GLASS OR FIRE ALARM BELL.</p> <p>13. PAINT ALL EXTERIOR BOLLARDS TO MATCH EXISTING COLOR UNLESS NOTED TO RECEIVE PLASTIC BOLLARD SLEEVE.</p> <p>14. PAINT SECURITY WALL PACK HOUSINGS TO MATCH ADJACENT WALL. REMOVE PAINT OVERSPRAY FROM LENSES.</p> <p>15. PAINT GARDEN CENTER STEEL DOORS AND FRAMES P51.</p> <p>16. NOT USED</p>

REFER TO SIGNAGE GENERAL NOTES FOR ADDITIONAL REQUIREMENTS

MOUNTING HOLE PATTERNS FOR NON-ILLUMINATED SIGN INSTALLATION

PLASTIC MOUNT FOR ALL-THREAD STUD TYP

INSTALL 1/8" DIA ALL-THREAD STUDS INTO PLASTIC MOUNTS

3/8" DIA HOLE FILLED WITH ADHESIVE SEALANT

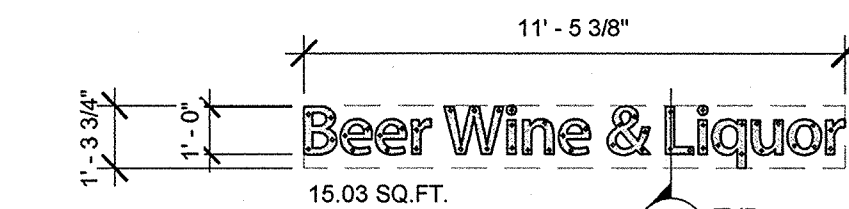
PLASTIC NON-ILLUMINATED CHANNEL LETTER

"ADHESIVE SEALANT" IS TO BE PRODUCT UN-950 BY LIQUID NAILS OR SIMILAR POLYURETHANE CONSTRUCTION ADHESIVE, MEETING ASTM D3498 AND C567 STANDARDS, EXTERIOR APPLICATION, WEATHER RESISTANT, LOW VOC, WITH A MINIMUM SHEAR STRENGTH OF 250 PSI

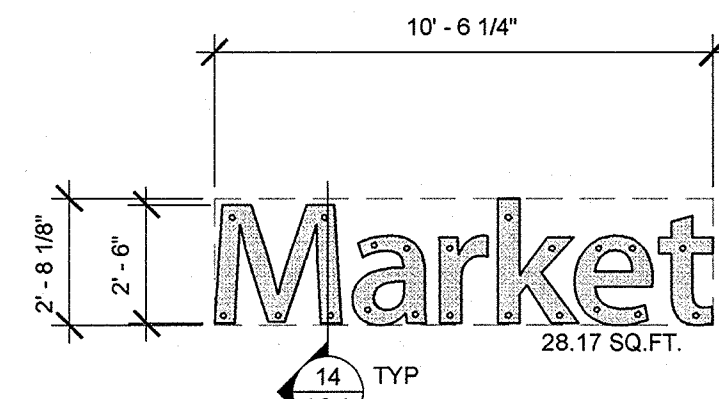
REPLACE EXISTING EIFS AS REQUIRED FOR NEW 5/8" PLYWOOD SHEATHING

REPLACE EXISTING SHEATHING AT SIGN WITH 5/8" EXTERIOR PLYWOOD SHEATHING. INSTALL NEW EIFS AS REQUIRED. MATCH ADJACENT TEXTURE AND FINISH

EXISTING FRAMING



13 12" BEER WINE & LIQUOR
1/4" = 1'-0"



12 30" MARKET SIGNAGE
1/4" = 1'-0"

EXISTING SIGNAGE SCHEDULE

FRONT SIGNAGE	QTY	COLOR	INDIVIDUAL AREA	TOTAL AREA
WAL-MART SUPERCENTER	1	WHITE	190.00 SF	190.00 SF
Market	2	WHITE	28.17 SF	56.34 SF
Home & Pharmacy	1	WHITE	101.95 SF	101.95 SF
Outdoor Living	1	WHITE	77.17 SF	77.17 SF
Beer Wine & Liquor	1	WHITE	15.03 SF	15.03 SF
TOTAL FRONT SIGNAGE				451.32 SF
AUTO CENTER SIGNAGE				
Autocare Center	1	WHITE	68.93 SF	68.93 SF
Tires	2	WHITE	5.20 SF	10.40 SF
Oil Change	4	WHITE	12.13 SF	48.52 SF
Battery	1	WHITE	5.85 SF	5.85 SF
TOTAL AUTO CENTER SIGNAGE				133.7 SF
TOTAL BUILDING SIGNAGE				585.02 SF

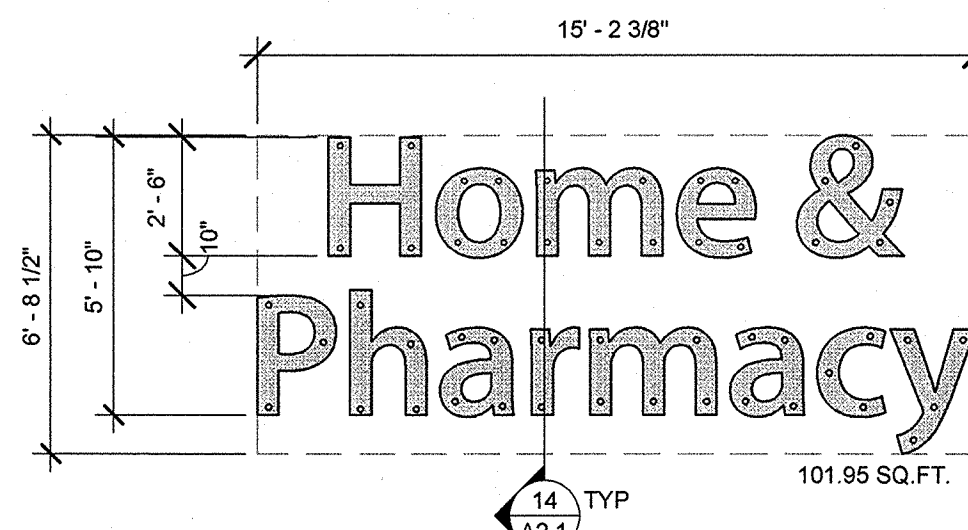
NEW SIGNAGE SCHEDULE

SIGNAGE LOCATION	QTY	LIGHTED	COLOR	SIZE	INDIVIDUAL AREA	TOTAL AREA
FRONT SIGNAGE						
Walmart	1	LED	WHITE	5'-6"		
Spark	1	LED	WHITE	8'-0"	298.00 SF	298.00 SF
Auto Center	1	N/A	WHITE	2'-0"	34.50 SF	34.50 SF
Outdoor Living	1	N/A	WHITE	2'-6"	77.17 SF	77.17 SF
Home & Pharmacy	1	N/A	WHITE	2'-6"	101.95 SF	101.95 SF
Market	1	N/A	WHITE	2'-6"	28.17 SF	28.17 SF
TOTAL FRONT SIGNAGE						539.79 SF
BEER WINE & LIQUOR SIGNAGE						
Beer Wine & Liquor	1	N/A	WHITE	1'-0"	15.03 SF	15.03 SF
TOTAL BEER WINE & LIQUOR SIGNAGE						15.03 SF
AUTO CENTER SIGNAGE						
Auto Center	1	N/A	WHITE	2'-0"	31.47 SF	31.47 SF
Tire	1	N/A	WHITE	1'-0"	17.63 SF	17.63 SF
Lube	1	N/A	WHITE	1'-0"	3.13 SF	3.13 SF
TOTAL AUTO CENTER SIGNAGE						52.23 SF
TOTAL BUILDING SIGNAGE						607.05 SF

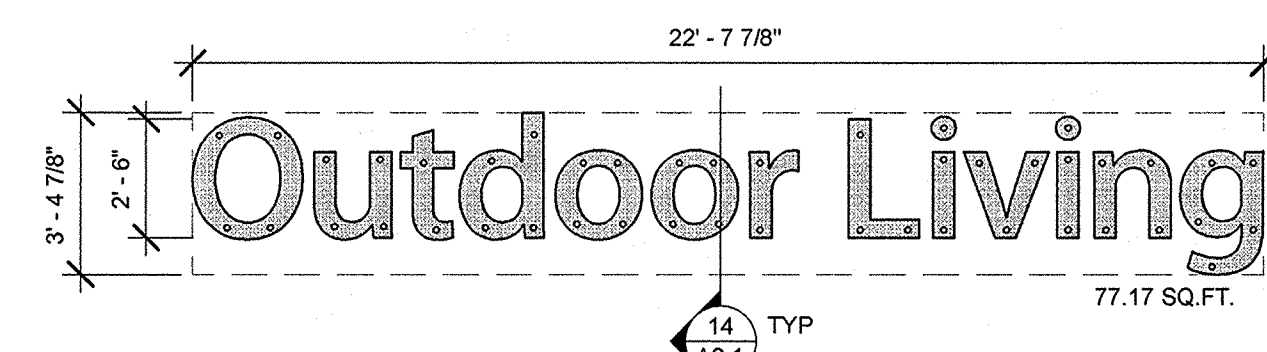
SIGNAGE GENERAL NOTES

- SIGNAGE FURNISHED BY WAL-MART AND INSTALLED BY OTHERS.
- GENERAL CONTRACTOR RESPONSIBILITIES:
 - REMOVE EXISTING EXTERIOR BUILDING SIGNAGE AS NOTED ON SHEET A2.
 - BY END OF FIRST WEEK OF CONSTRUCTION, REVIEW EXISTING CONSTRUCTION WHERE SIGN(S) WILL BE INSTALLED. IF EXISTING CONDITIONS DO NOT MATCH SIGN ATTACHMENT DETAILS SHOWN, REQUEST APPROVAL FROM CONSTRUCTION MANAGER TO SUBMIT RFI IN ACCORDANCE WITH SECTION 01255. NOTE DIFFERENCES IN CONSTRUCTION, INCLUDING DIMENSIONS, AND INCLUDE PHOTOGRAPHS FOR CLARIFICATION.
 - PROVIDE SUBSTRATE SUITABLE FOR INSTALLATION OF SIGNAGE. REFER TO DETAILS ON SHEET A2.1.
 - PROVIDE JUNCTION BOXES AND CIRCUITRY TO NEW "Walmart" and "spark" SIGNAGE. EXISTING (B) BOXES FROM "WAL-MART" SIGNAGE MAY BE REUSED.
 - NOT USED
 - NOT USED
 - VERIFY VOLTAGE AT CIRCUITS FEEDING LIGHTED SIGNAGE. REFER TO ELECTRICAL.
 - MAKE FINAL TERMINATIONS ON LIGHTED SIGNAGE.
- SIGNAGE CONTRACTOR RESPONSIBILITIES:
 - FURNISH SPECIFIED CONDUIT FOR LIGHTED SIGNAGE.
 - MAKE REQUIRED EXTERIOR WALL PENETRATIONS, INSTALL CONDUIT, AND SEAL PENETRATIONS PER SPECIFICATION SECTION 07000
 - INSTALL SIGNAGE PER DETAILS ON SHEET A2.1.

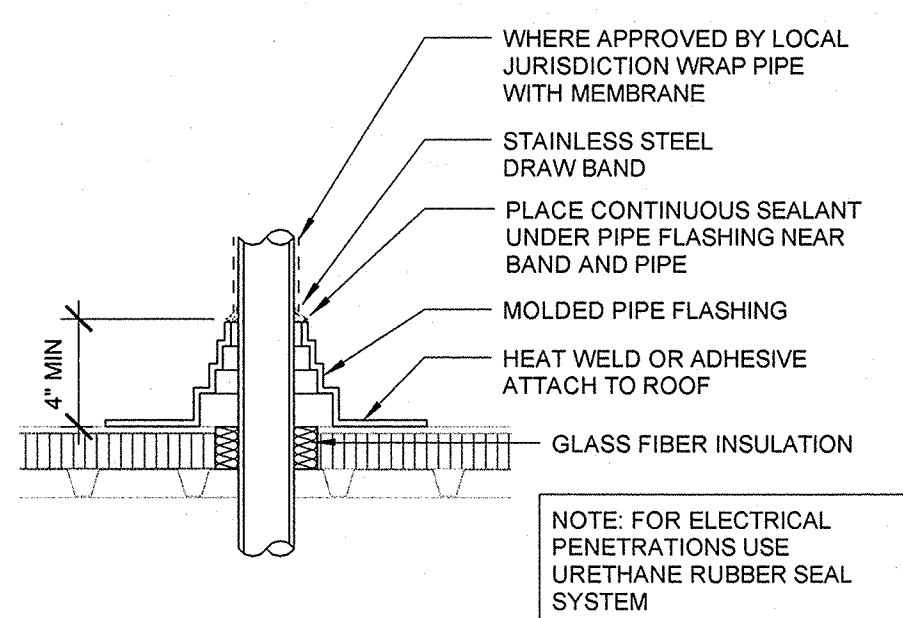
14 SIGN ATTACHMENT AT EIFS AND METAL STUD WALL
1 1/2" = 1'-0"



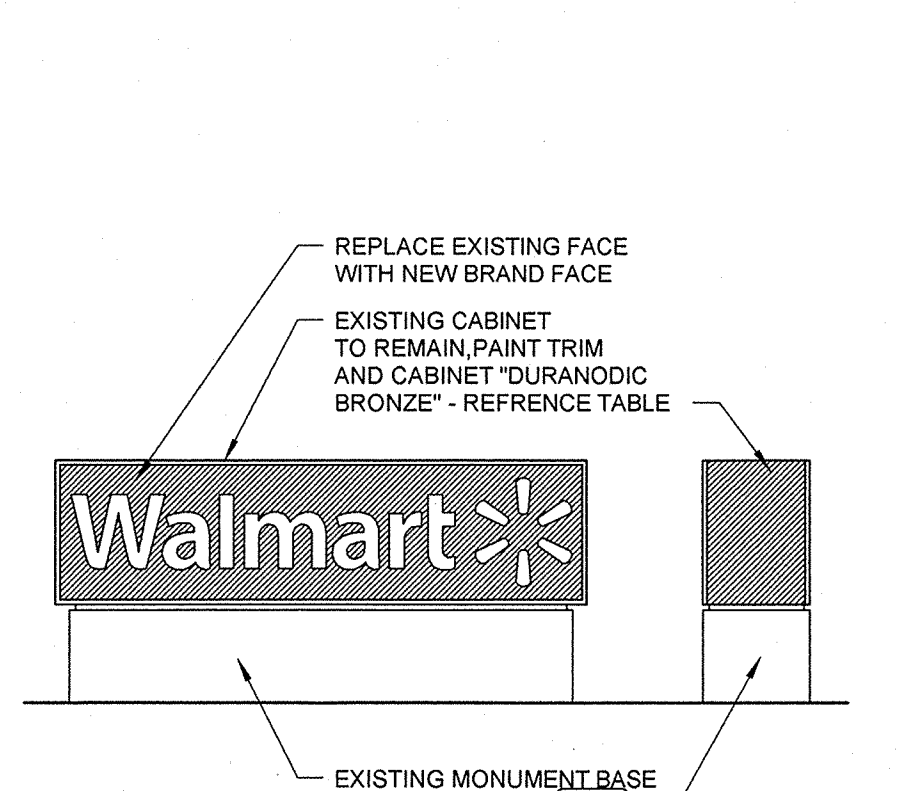
11 30" HOME & PHARMACY SIGNAGE
1/4" = 1'-0"



10 30" OUTDOOR LIVING
1/4" = 1'-0"



9 PENETRATION DETAIL
1" = 1'-0"

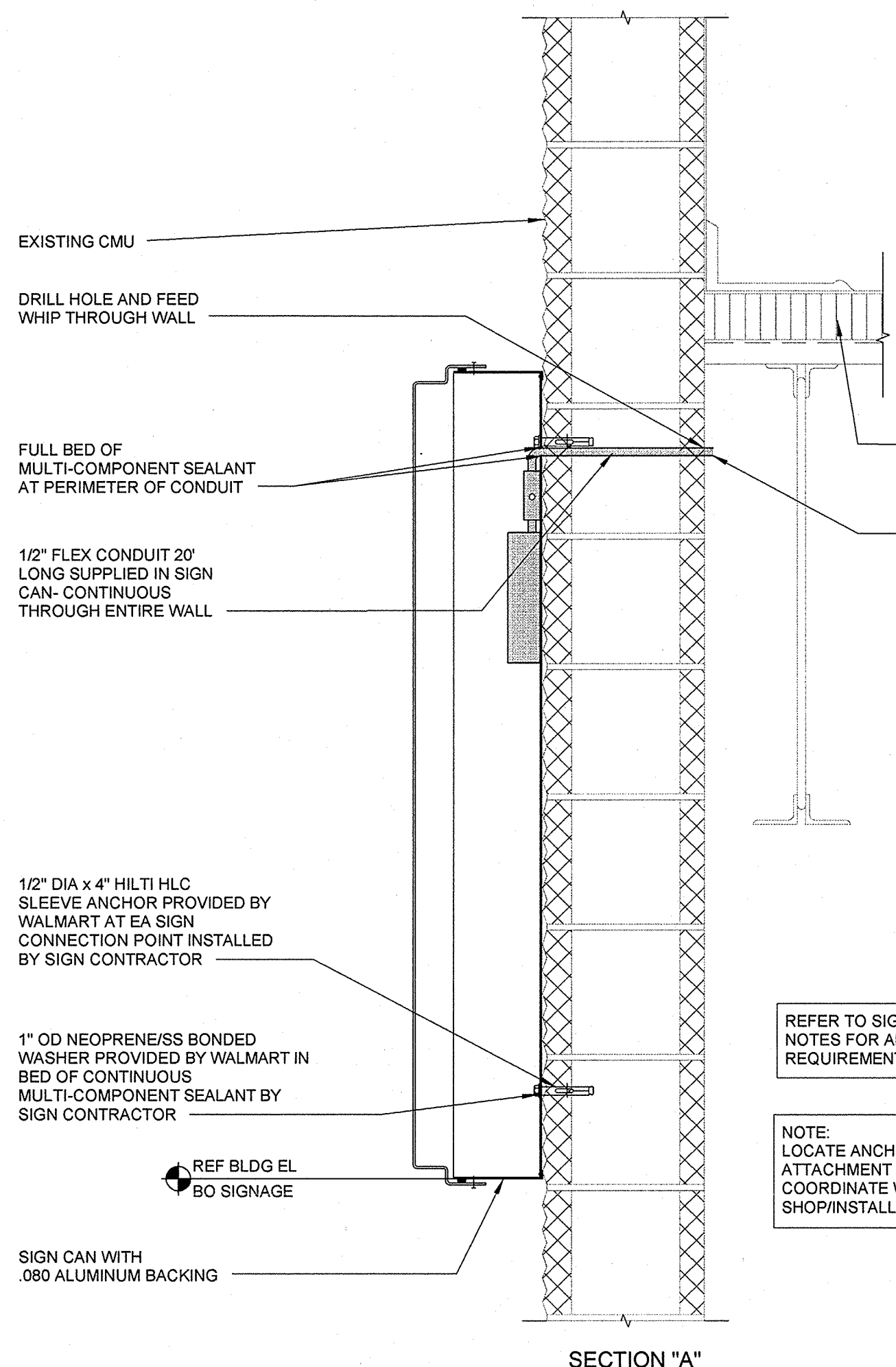


4 WALMART MONUMENT SIGN
3/16" = 1'-0"

SHERWIN-WILLIAMS DURANODIC BRONZE ORDER NUMBER 7248-02462
-BRONZE MATCH
-CUSTOM MANUAL MATCH
BAC COLORANT: QZ 32 64 128
W1 WHITE 6 4 1 1
B1 BLACK 19 1 1
Y3 DEEP GOLD 49 1 1
G2 NEW GREEN 18 1 1
ONE GALLON #B547000104
UI TRADECP # 796999993

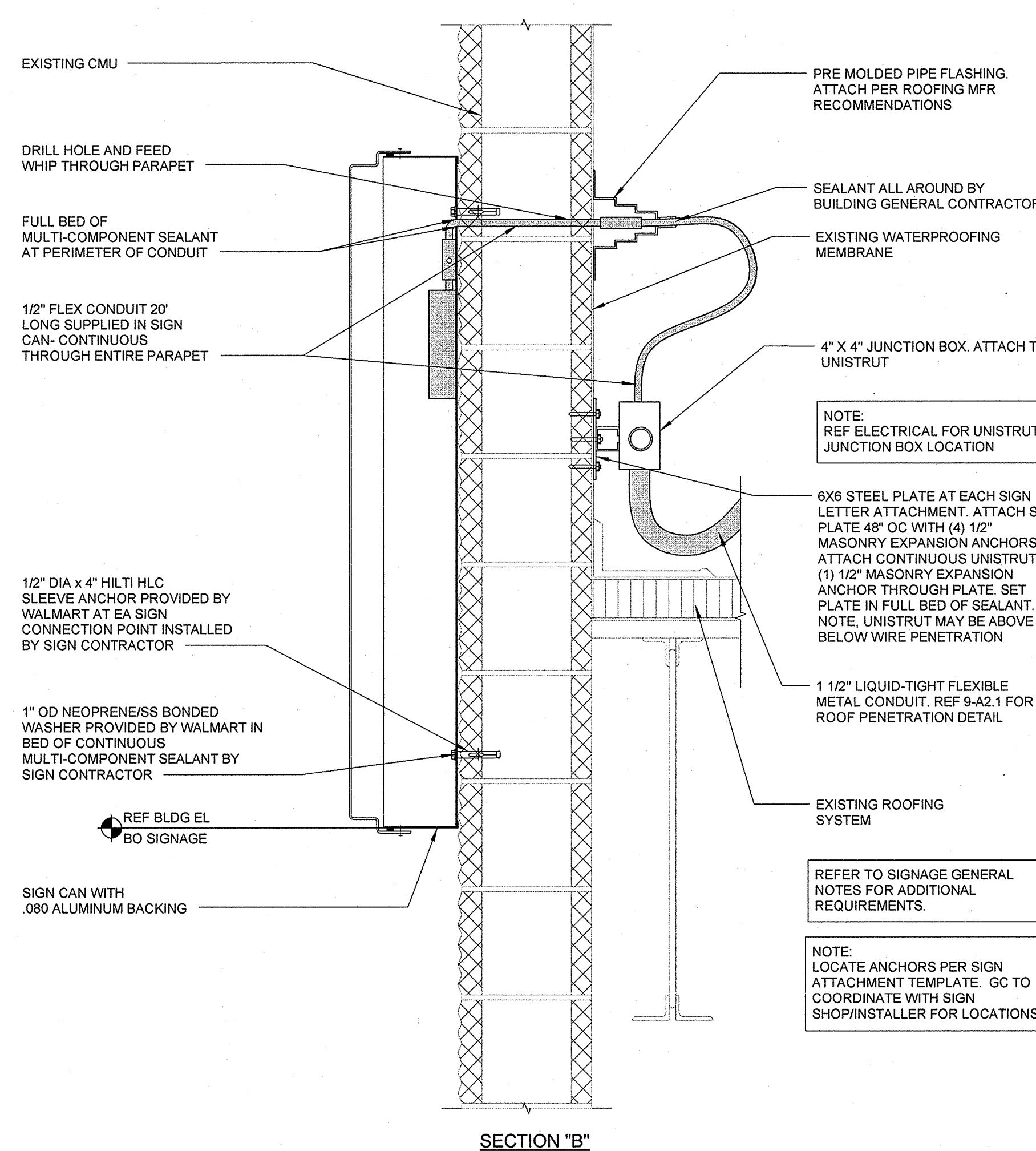
ALL SITE SIGN WORK DONE BY SIGN CONTRACTOR

8 WALMART SIGN ATTACHMENT AT EXISTING CMU
1 1/2" = 1'-0"



REFER TO SIGNAGE GENERAL NOTES FOR ADDITIONAL REQUIREMENTS.

NOTE: LOCATE ANCHORS PER SIGN ATTACHMENT TEMPLATE. GC TO COORDINATE WITH SIGN SHOP/INSTALLER FOR LOCATIONS.



NOTE: REF ELECTRICAL FOR UNISTRUT/ JUNCTION BOX LOCATION

6X6 STEEL PLATE AT EACH SIGN LETTER ATTACHMENT. ATTACH STEEL PLATE 48" OC WITH (4) 1/2" MASONRY EXPANSION ANCHORS. ATTACH CONTINUOUS UNISTRUT WITH (1) 1/2" MASONRY EXPANSION ANCHOR THROUGH PLATE. SET PLATE IN FULL BED OF SEALANT. NOTE: UNISTRUT MAY BE ABOVE OR BELOW WIRE PENETRATION

1 1/2" LIQUID-TIGHT FLEXIBLE METAL CONDUIT. REF 9-A2.1 FOR ROOF PENETRATION DETAIL

REFER TO SIGNAGE GENERAL NOTES FOR ADDITIONAL REQUIREMENTS.

NOTE: LOCATE ANCHORS PER SIGN ATTACHMENT TEMPLATE. GC TO COORDINATE WITH SIGN SHOP/INSTALLER FOR LOCATIONS.

7 SIGN ATTACHMENT AT CMU WALL
1 1/2" = 1'-0"

REFER TO SIGNAGE GENERAL NOTES FOR ADDITIONAL REQUIREMENTS.

MOUNTING HOLE PATTERNS FOR NON-ILLUMINATED SIGN INSTALLATION

PLASTIC MOUNT FOR ALL-THREAD STUD, TYP

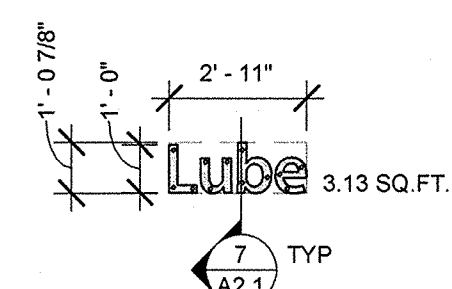
INSTALL 1/8" DIA ALL-THREAD STUDS INTO PLASTIC MOUNTS PRIOR TO SIGN INSTALLATION, TYP

3/8" DIA HOLE FILLED WITH ADHESIVE SEALANT. COAT ALL-THREAD STUD WITH ADHESIVE SEALANT PRIOR TO WALL ATTACHMENT, TYP

PLASTIC NON-ILLUMINATED CHANNEL LETTER

"ADHESIVE SEALANT" IS TO BE PRODUCT UN-950 BY LIQUID NAILS OR SIMILAR POLYURETHANE CONSTRUCTION ADHESIVE, MEETING ASTM D3498 AND C567 STANDARDS, EXTERIOR APPLICATION, WEATHER RESISTANT, LOW VOC, WITH A MINIMUM SHEAR STRENGTH OF 250 PSI

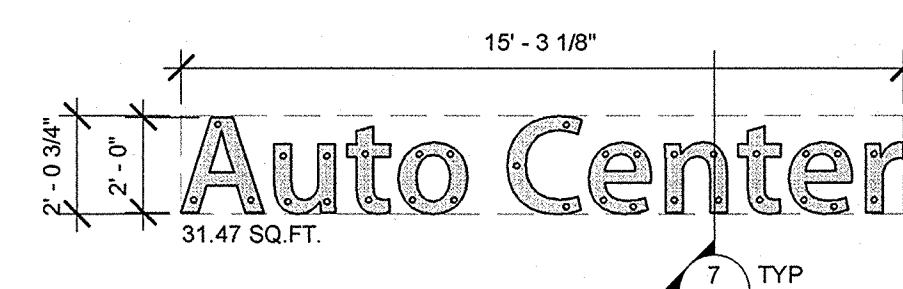
6 12" LUBE SIGNAGE
1/4" = 1'-0"



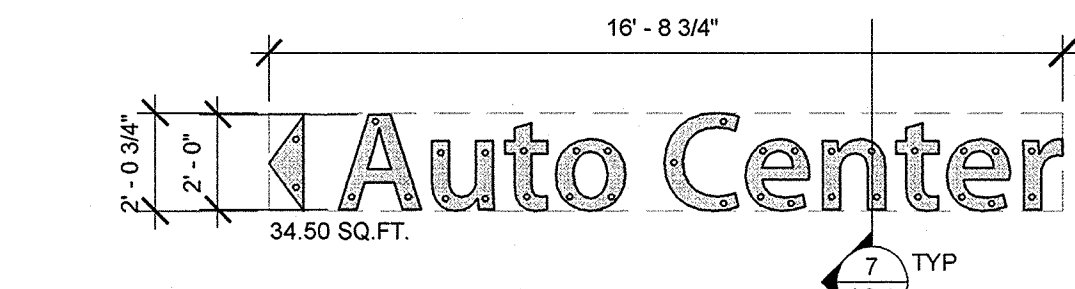
5 12" TIRE SIGNAGE
1/4" = 1'-0"



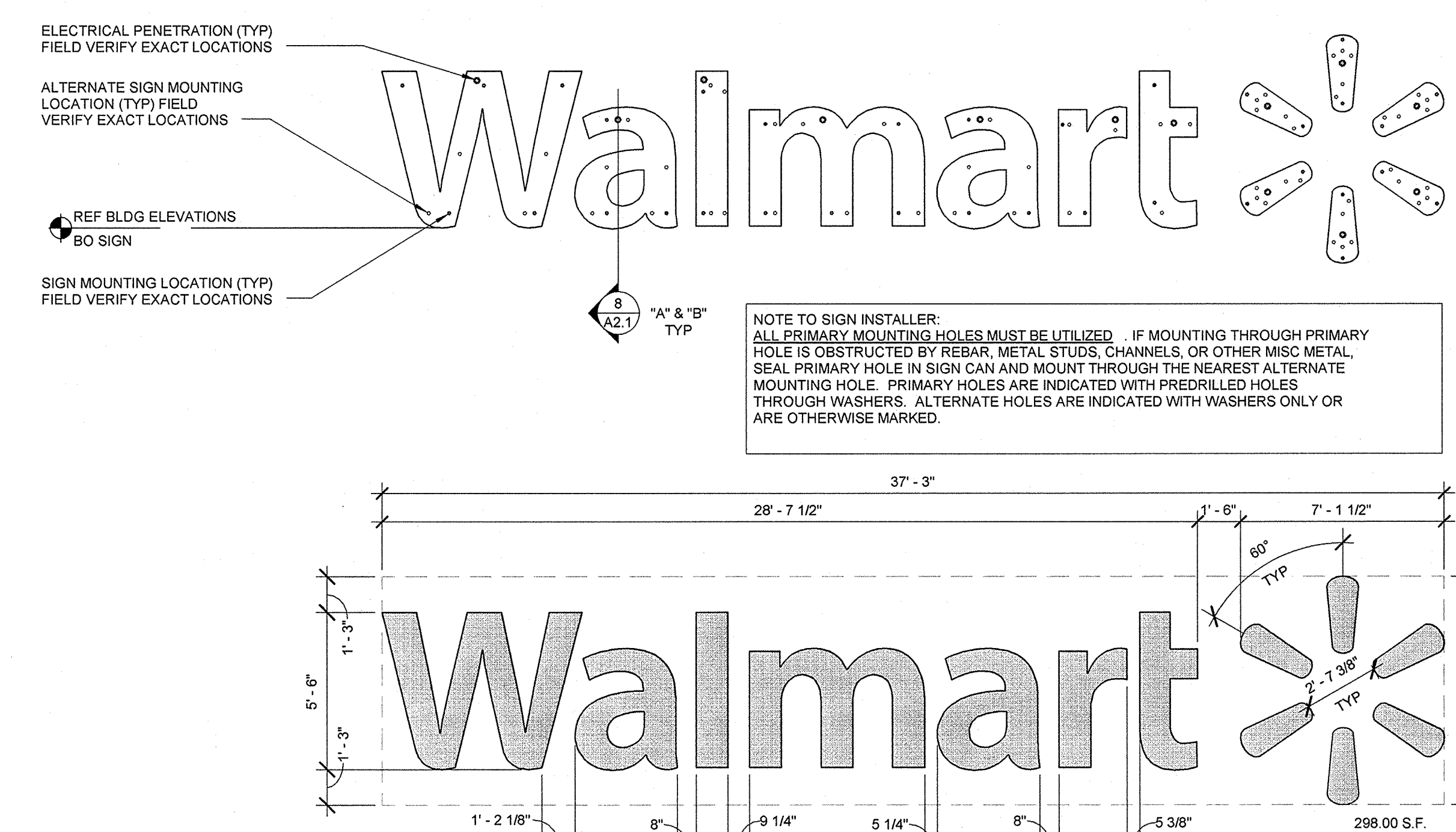
3 24" AUTO CENTER SIGNAGE
1/4" = 1'-0"



2 24" AUTO CENTER (W/ ARROW)
1/4" = 1'-0"



1 5'-6" WALMART SIGN AND MOUNTING DIAGRAM
1/4" = 1'-0"



NOTE TO SIGN INSTALLER: ALL PRIMARY MOUNTING HOLES MUST BE UTILIZED. IF MOUNTING THROUGH PRIMARY HOLE IS OBSTRUCTED BY REBAR, METAL STUDS, CHANNELS, OR OTHER MISCELLANEOUS METAL, SEAL PRIMARY HOLE IN SIGN CAN AND MOUNT THROUGH THE NEAREST ALTERNATE MOUNTING HOLE. PRIMARY HOLES ARE INDICATED WITH PREDRILLED HOLES THROUGH WASHERS. ALTERNATE HOLES ARE INDICATED WITH WASHERS ONLY OR ARE OTHERWISE MARKED.