

ORDINANCE No. 074, SERIES 2015

AN ORDINANCE CHANGING THE ZONING FROM M-1 INDUSTRIAL TO EZ-1 ENTERPRISE ZONE ON PROPERTY LOCATED AT 1228 SOUTH 7TH STREET CONTAINING 5.5 ACRES AND BEING IN LOUISVILLE METRO (CASE NO. 14ZONE1056).

SPONSORED BY: COUNCILWOMAN MADONNA FLOOD


WHEREAS, the Legislative Council of the Louisville/Jefferson County Metro Government (the "Council") has considered the evidence presented at the public hearing held by the Louisville Metro Planning Commission and the recommendations of the Planning Commission and its staff as set out in the minutes and records of the Planning Commission in Case No. 14ZONE1056; and

WHEREAS, the Council concurs in and adopts the findings of the Planning Commission for the zoning change in Case No. 14ZONE1056 and approves and accepts the recommendations of the Planning Commission as set out in said minutes and records;

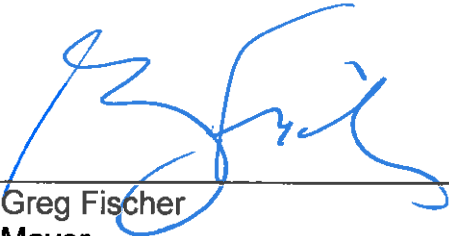
NOW THEREFORE BE IT ORDAINED BY THE LEGISLATIVE COUNCIL OF THE LOUISVILLE/JEFFERSON COUNTY METRO GOVERNMENT AS FOLLOWS:

Section I: That the zoning of the property located at 1228 South 7th Street containing 5.5 acres and being in Louisville Metro, as more particularly described in the minutes and records of the Planning Commission in Case No. 14ZONE1056, is hereby changed from M-1 Industrial to EZ-1 Enterprise Zone; provided, however, said property shall be subject to the binding elements as set forth in the minutes of the Planning Commission in Case No. 14ZONE1056.

Section II: This Ordinance shall take effect upon its passage and approval.


H. Stephen Ott
Metro Council Clerk

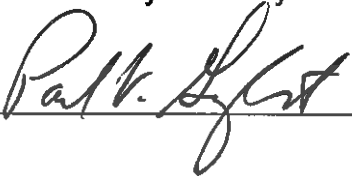

David W. Tandy
President of the Council

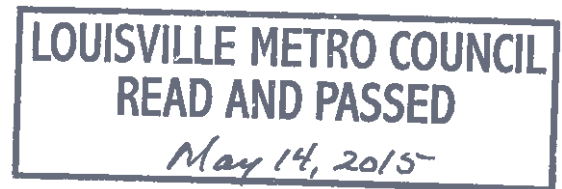

Greg Fischer
Mayor

Approved: 5/15/15
Date

APPROVED AS TO FORM AND LEGALITY:

Michael J. O'Connell
Jefferson County Attorney

By: 



O-093-15

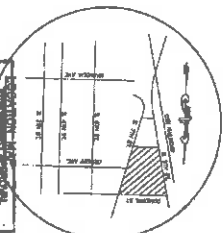
[illegible]

EX. STONE BRIDGE
EX. SHAWNEY BRIDGE
MORRISTOWN HILL
EX. VANDY VILLAGE
EX. DAVE WALKER
EX. LEBERT
EX. PINEC
PINE DISTRICT TALKINGTON ZONE
AREA OF INTEREST

SEND NO MONEY! **AREA** via our **SEMI-NOV** and **NOV** 97%
 DISCOUNTS! **NOV** 97% **NOV** 97% **NOV** 97% **NOV** 97%
 NO MONEY! **NOV** 97% **NOV** 97% **NOV** 97% **NOV** 97%
 NO MONEY! **NOV** 97% **NOV** 97% **NOV** 97% **NOV** 97%

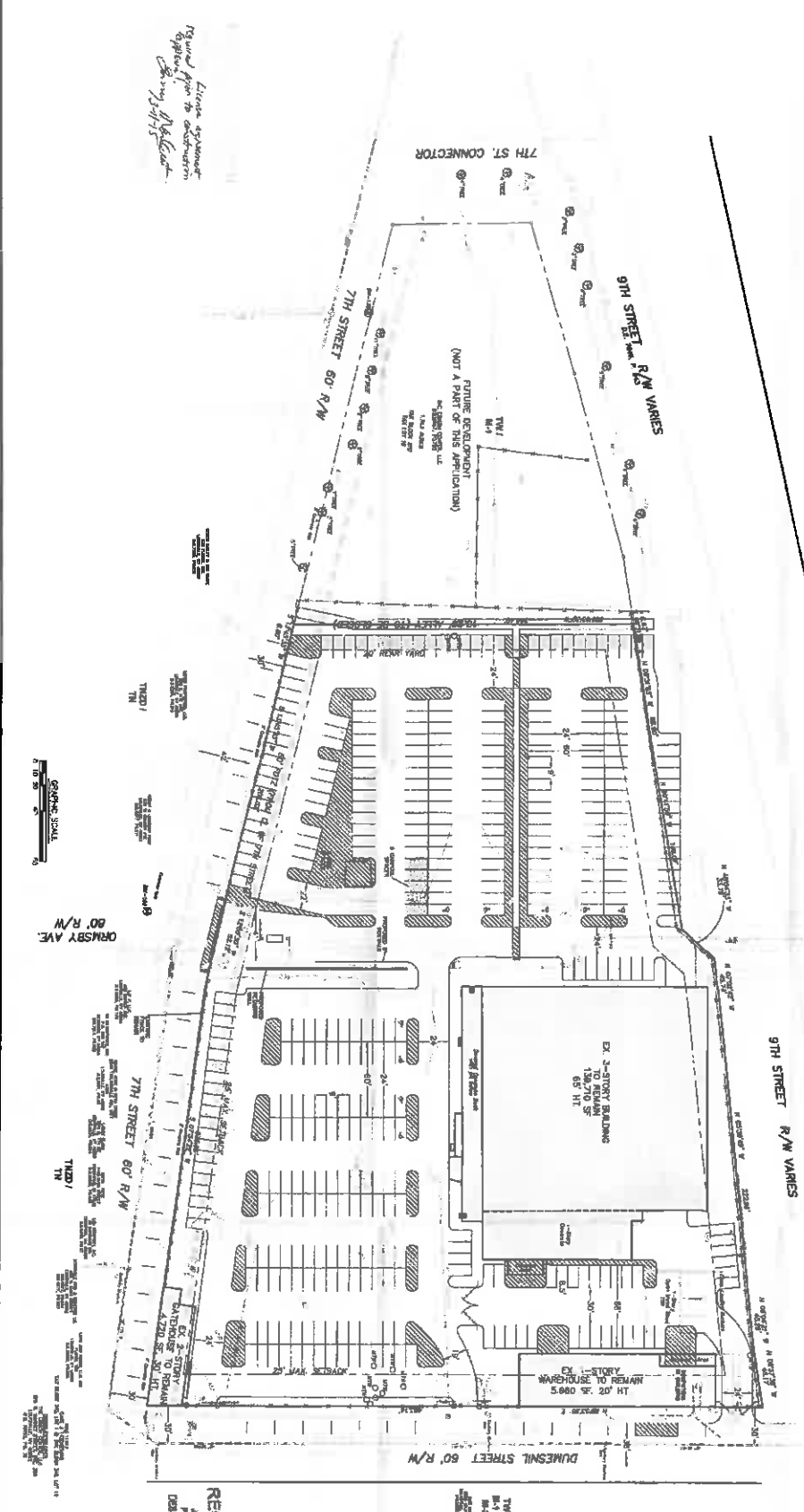
[illegible]

60-1
 60-2
 60-3
 60-4
 60-5
 60-6
 60-7
 60-8
 60-9
 60-10
 60-11
 60-12
 60-13
 60-14
 60-15
 60-16
 60-17
 60-18
 60-19
 60-20
 60-21
 60-22
 60-23
 60-24
 60-25
 60-26
 60-27
 60-28
 60-29
 60-30
 60-31
 60-32
 60-33
 60-34
 60-35
 60-36
 60-37
 60-38
 60-39
 60-40
 60-41
 60-42
 60-43
 60-44
 60-45
 60-46
 60-47
 60-48
 60-49
 60-50
 60-51
 60-52
 60-53
 60-54
 60-55
 60-56
 60-57
 60-58
 60-59
 60-60
 60-61
 60-62
 60-63
 60-64
 60-65
 60-66
 60-67
 60-68
 60-69
 60-70
 60-71
 60-72
 60-73
 60-74
 60-75
 60-76
 60-77
 60-78
 60-79
 60-80
 60-81
 60-82
 60-83
 60-84
 60-85
 60-86
 60-87
 60-88
 60-89
 60-90
 60-91
 60-92
 60-93
 60-94
 60-95
 60-96
 60-97
 60-98
 60-99
 60-100
 60-101
 60-102
 60-103
 60-104
 60-105
 60-106
 60-107
 60-108
 60-109
 60-110
 60-111
 60-112
 60-113
 60-114
 60-115
 60-116
 60-117
 60-118
 60-119
 60-120
 60-121
 60-122
 60-123
 60-124
 60-125
 60-126
 60-127
 60-128
 60-129
 60-130
 60-131
 60-132
 60-133
 60-134
 60-135
 60-136
 60-137
 60-138
 60-139
 60-140
 60-141
 60-142
 60-143
 60-144
 60-145
 60-146
 60-147
 60-148
 60-149
 60-150
 60-151
 60-152
 60-153
 60-154
 60-155
 60-156
 60-157
 60-158
 60-159
 60-160
 60-161
 60-162
 60-163
 60-164
 60-165
 60-166
 60-167
 60-168
 60-169
 60-170
 60-171
 60-172
 60-173
 60-174
 60-175
 60-176
 60-177
 60-178
 60-179
 60-180
 60-181
 60-182
 60-183
 60-184
 60-185
 60-186
 60-187
 60-188
 60-189
 60-190
 60-191
 60-192
 60-193
 60-194
 60-195
 60-196
 60-197
 60-198
 60-199
 60-200
 60-201
 60-202
 60-203
 60-204
 60-205
 60-206
 60-207
 60-208
 60-209
 60-210
 60-211
 60-212
 60-213
 60-214
 60-215
 60-216
 60-217
 60-218
 60-219
 60-220
 60-221
 60-222
 60-223
 60-224
 60-225
 60-226
 60-227
 60-228
 60-229
 60-230
 60-231
 60-232
 60-233
 60-234
 60-235
 60-236
 60-237
 60-238
 60-239
 60-240
 60-241
 60-242
 60-243
 60-244
 60-245
 60-246
 60-247
 60-248
 60-249
 60-250
 60-251
 60-252
 60-253
 60-254
 60-255
 60-256
 60-257
 60-258
 60-259
 60-260
 60-261
 60-262
 60-263
 60-264
 60-265
 60-266
 60-267
 60-268
 60-269
 60-270
 60-271
 60-272
 60-273
 60-274
 60-275
 60-276
 60-277
 60-278
 60-279
 60-280
 60-281
 60-282
 60-283
 60-284
 60-285
 60-286
 60-287
 60-288
 60-289
 60-290
 60-291
 60-292
 60-293
 60-294
 60-295
 60-296
 60-297
 60-298
 60-299
 60-300
 60-301
 60-302
 60-303
 60-304
 60-305
 60-306
 60-307
 60-308
 60-309
 60-310
 60-311
 60-312
 60-313
 60-314
 60-315
 60-316
 60-317
 60-318
 60-319
 60-320
 60-321
 60-322
 60-323
 60-324
 60-325
 60-326
 60-327
 60-328
 60-329
 60-330
 60-331
 60-332
 60-333
 60-334
 60-335
 60-336
 60-337
 60-338
 60-339
 60-340
 60-341
 60-342
 60-343
 60-344
 60-345
 60-346
 60-347
 60-348
 60-349
 60-350
 60-351
 60-352
 60-353
 60-354
 60-355
 60-356
 60-357
 60-358
 60-359
 60-360
 60-361
 60-362
 60-363
 60-364
 60-365
 60-366
 60-367
 60-368
 60-369
 60-370
 60-371
 60-372
 60-373
 60-374
 60-375
 60-376
 60-377
 60-378
 60-379
 60-380
 60-381
 60-382



10-11-15
 LOUISVILLE & JEFFERSON COUNTY
 METROPOLITAN SEWER DISTRICT
 Engineering Division

License agreement
Issued prior to construction
Application.
For my 11th District.
3-11-15



SHEET 1 OF 1	DDP	DATE	BY	JOB NO.	SHEET TITLE
					DETAILED DISTRICT DEVELOPMENT PLAN
					PROJECT TITLE
					THE EDISON CENTER
					1228 SOUTH 7TH ST., LOUISVILLE, KY 40203

 **SABAK, WILSON & LINGO, INC.**
ENGINEERS, LANDSCAPE ARCHITECTS & PLANNERS
WE HWY CLAY 608 S. THIRD STREET LOUISVILLE, KENTUCKY 40202 (502) 584 - 6272