

Department of Public Health and Wellness

FY16 Budget Presentation



June 9, 2015

Sarah S. Moyer, MD, MPH
Interim Director

What is Public Health?

“Public health is the science and art of preventing disease, prolonging life and promoting health through the organized efforts and informed choices of society, organizations, public and private, communities and individuals”

World Health Organization

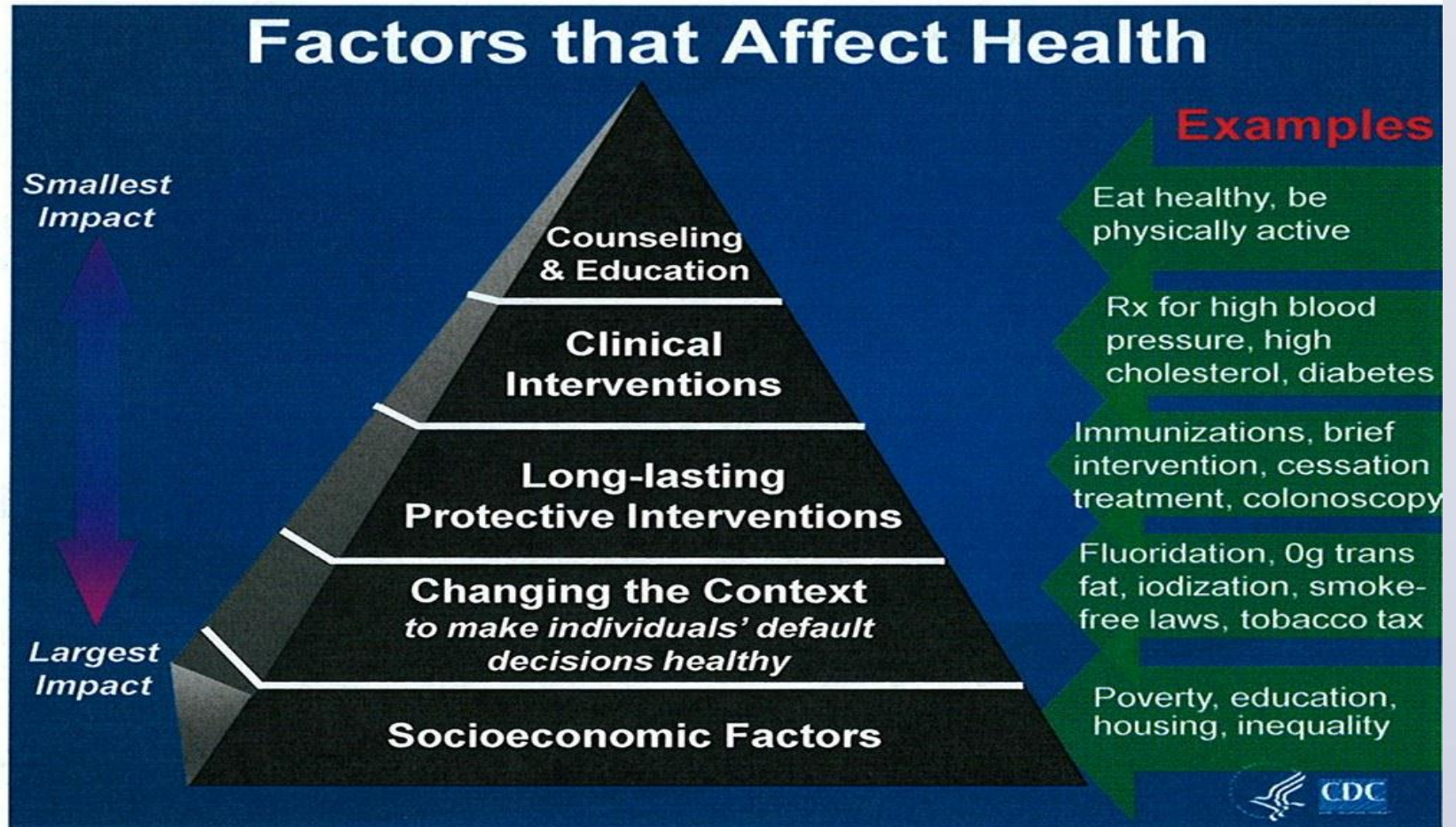
What is Population Health?

“Population health is the health outcomes of a group of individuals, including the distribution of such outcomes within the group”

LMPHW Mission

The mission of LMPHW is to promote health and wellness; prevent disease, illness, and injury; and protect the health and safety of metro Louisville residents and visitors.

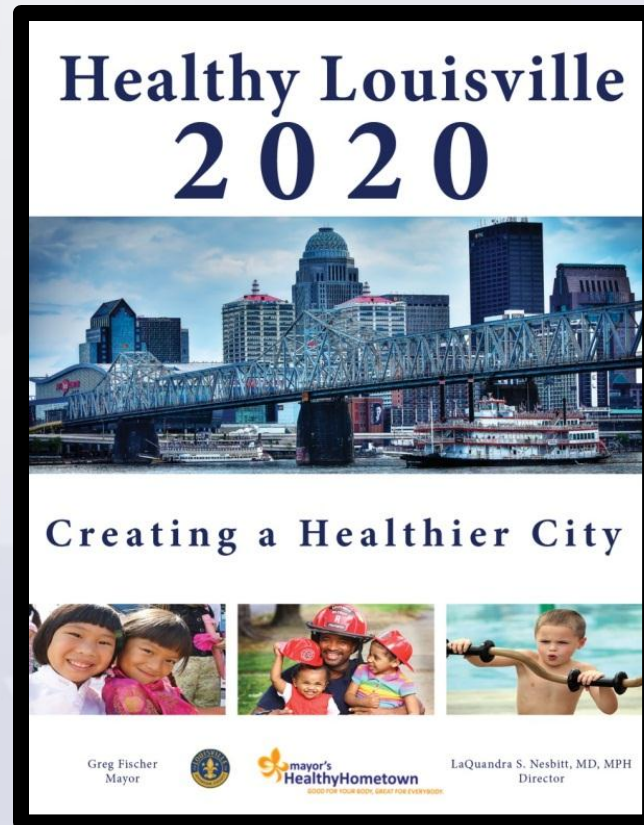
How Do We Improve Health?



Frieden TR. Am J Public Health 2010;100(4):590-5

IMPROVING THE HEALTH OF OUR COMMUNITY

Establish a Community Agenda

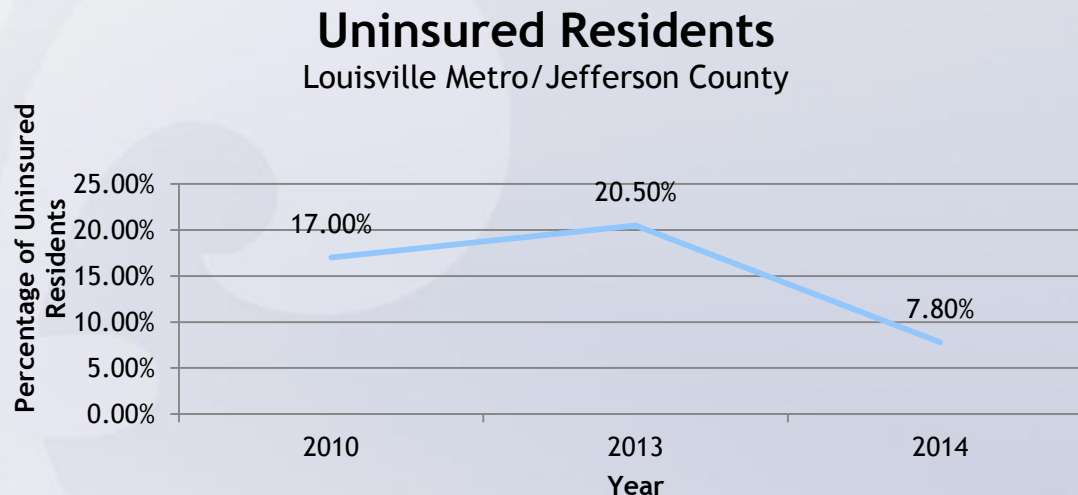


Create Momentum

Mayor's Goal #13

Initiative #5: Increase health insurance coverage to all Louisville Metro residents by decreasing percentage of uninsured residents from 17% to 0%

- Contributors: LMPHW, The Board of Health, Hospitals and Physician's offices, Metro Community Services, Local Emergency Departments, etc.



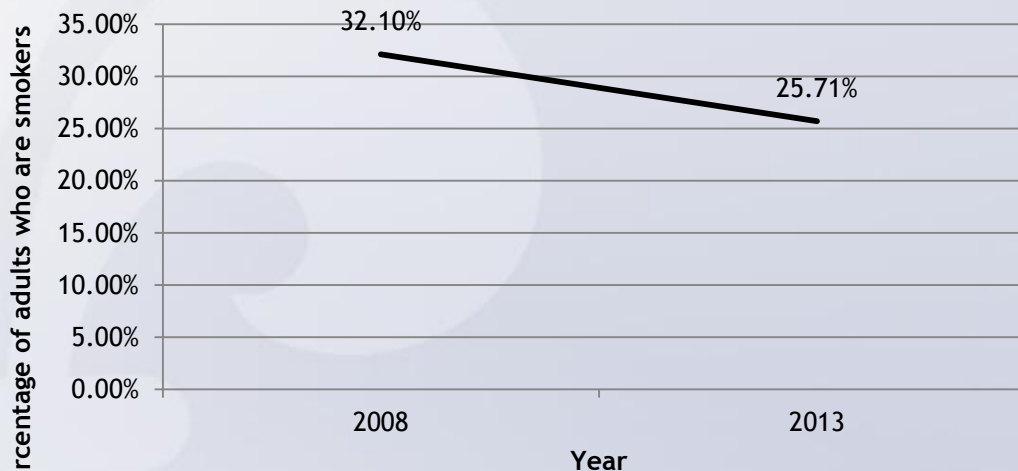
Create Momentum

Initiative #6: Reduce the death rate related to tobacco use and exposure to secondhand smoke by reducing cigarette smoking among adults from 32.1% to 29%.

- Contributors: LMPHW, Metro Parks, Louisville Metro Housing Authority, Office of Inspections, License and Planning

Cigarette Smoking Among Adults

Louisville Metro/Jefferson County



Inspire a Shared Community Effort

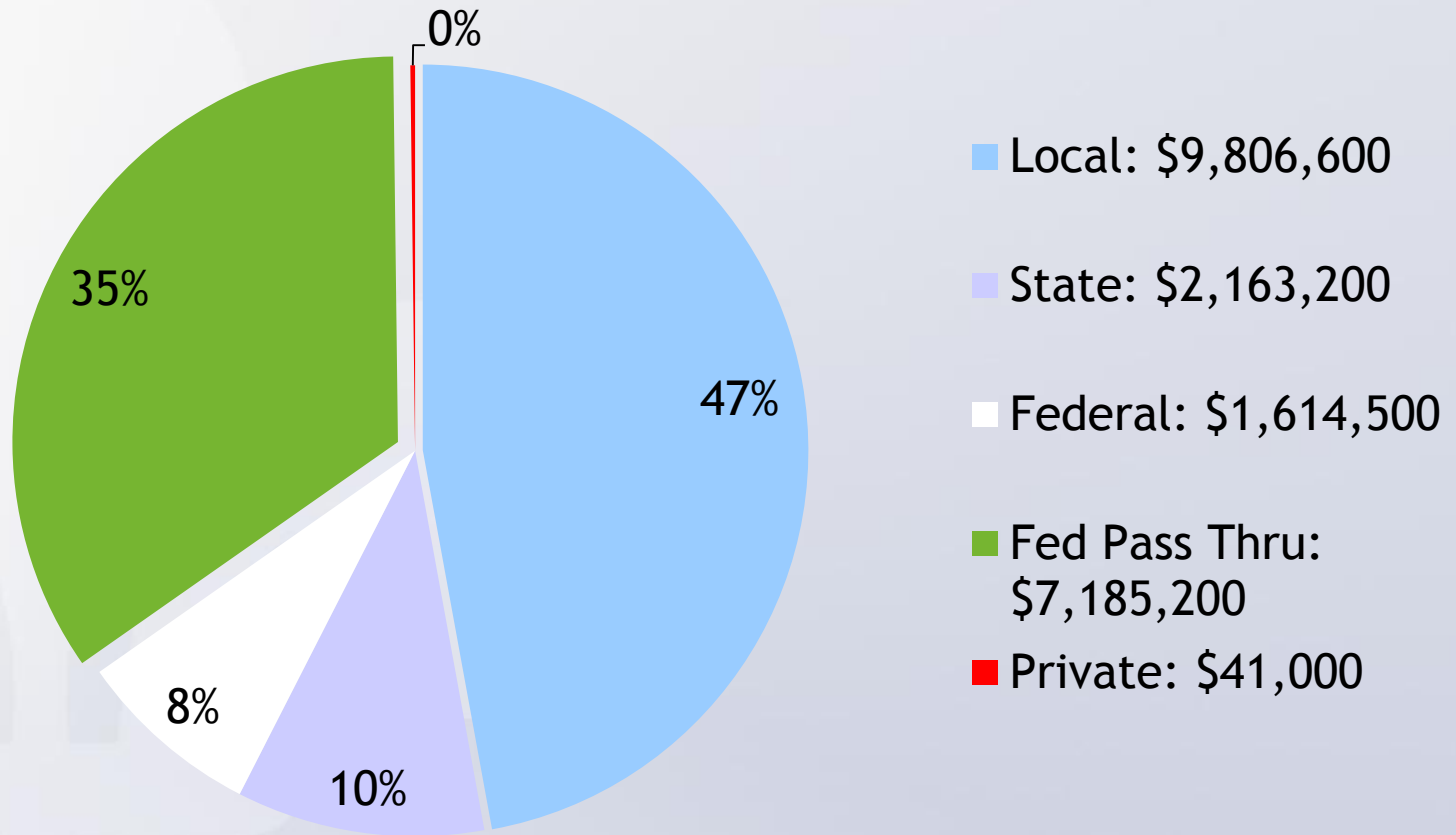


Policy & Systems Changes

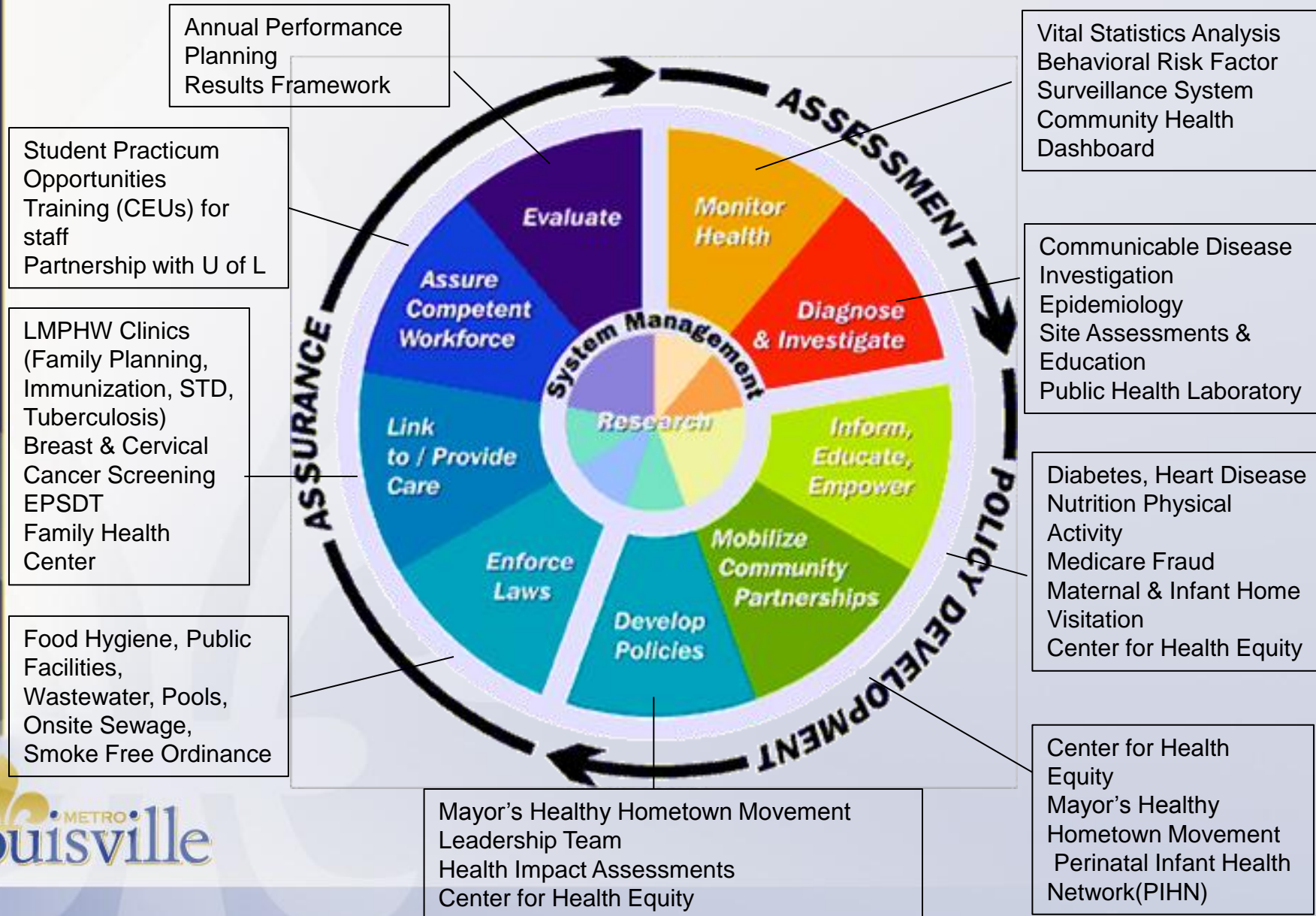
- Continue Promoting Patient Centered Medical Home (PCMH) Expansion
- “Health-in-all-Policies” approach to problem solving
- Public health approach to violence prevention

BUDGET HIGHLIGHTS

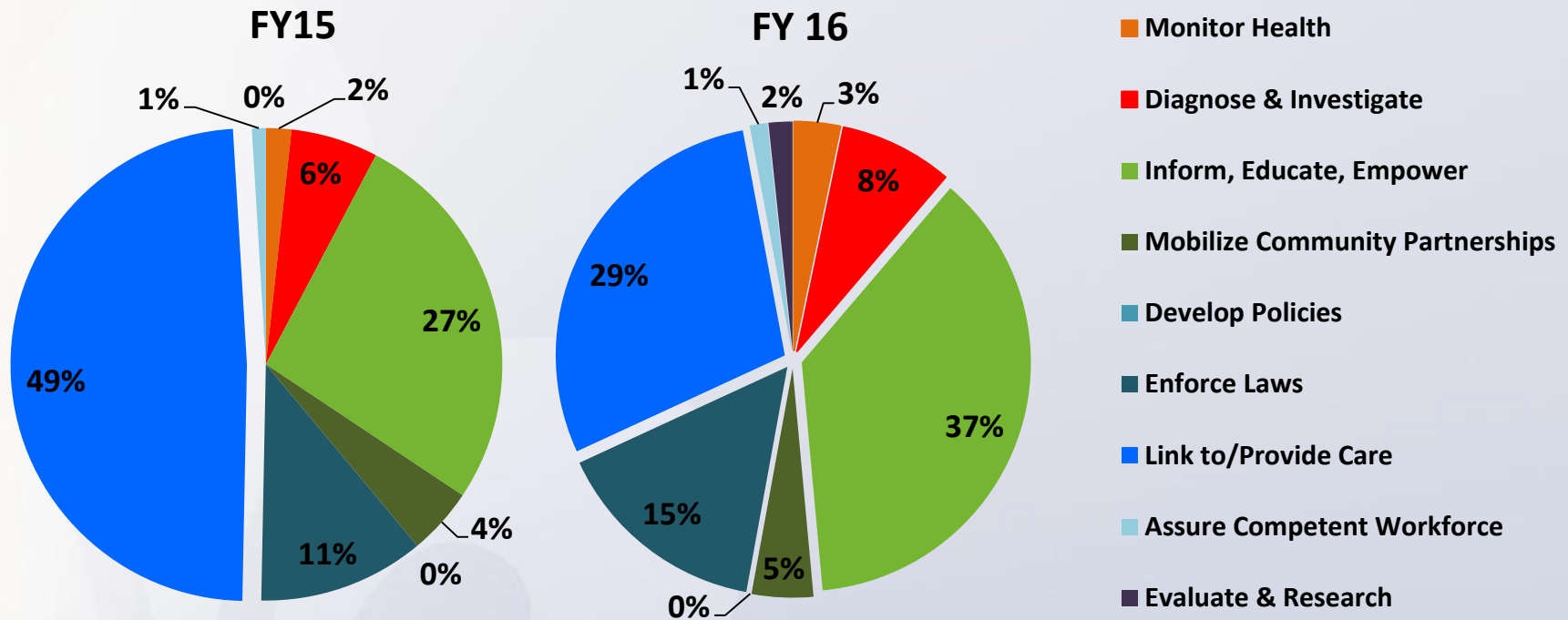
LMPHW Sources of Funding



Core Functions of Public Health



Funding Sources by Essential Services



OPERATIONAL CHANGES HIGHLIGHTS

Operational Changes

- **Continue increasing capacity of functions exclusive to public health**
 - Disease surveillance, epidemiology, health assessment
 - Quality improvement, evaluation, policy research and development
 - Syringe Exchange Program

Operational Changes

- **Continue promoting comprehensive medical care through the patient centered medical home**
 - Immunizations
 - Nutritional counseling through Women's Infant and Children (WIC)

Contact Info

Sarah S. Moyer, Interim Director

Sarah.Moyer@louisvilleky.gov

502-574-8058