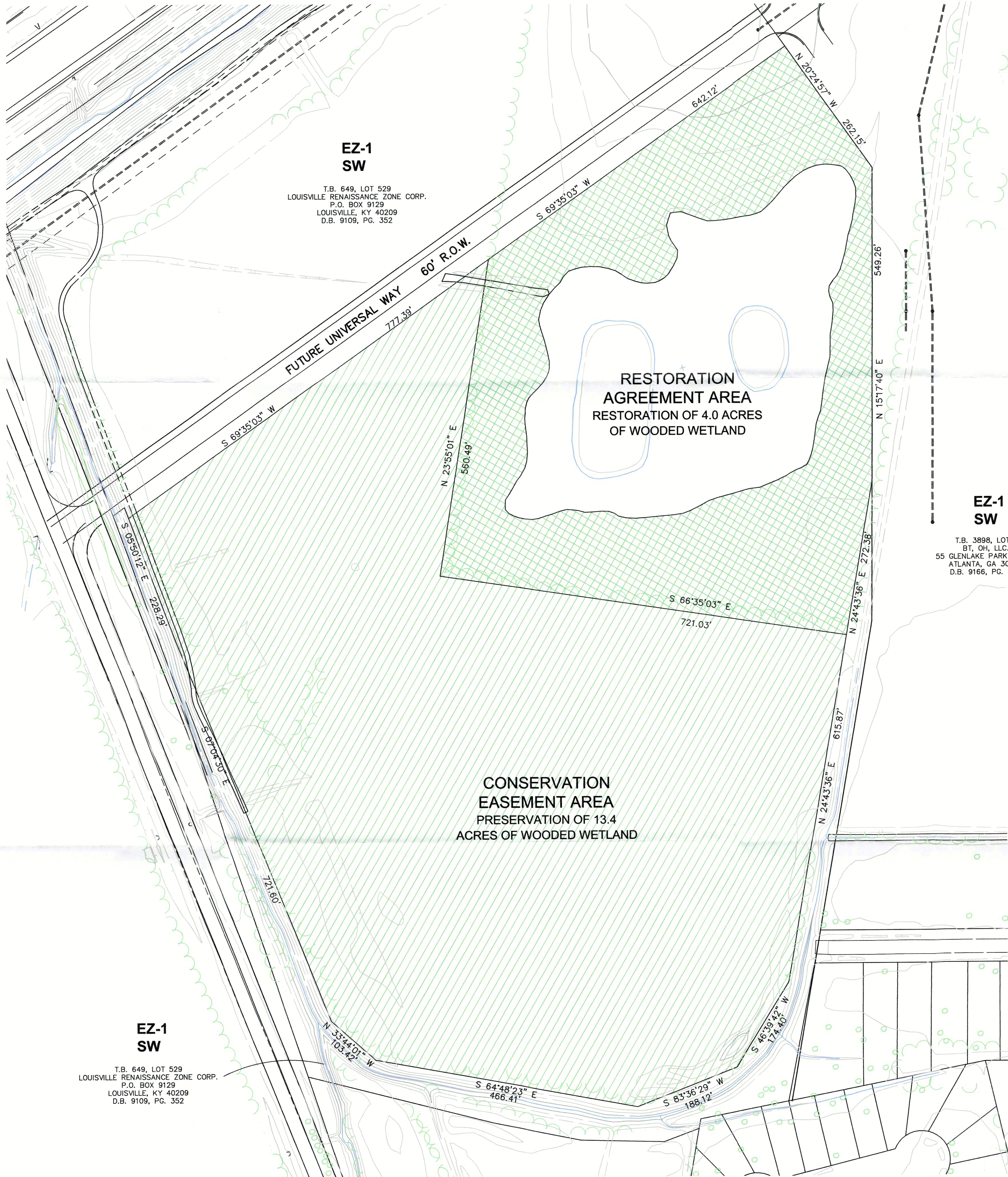


K:\JOBS\DDP\0504-Cat3-RDDP-NP.dwg, CONSERVATION AREA, 8/4/2015 4:34:02 PM, HP Designplot T920



**EZ-1  
SW**

T.B. 649, LOT 529  
LOUISVILLE RENAISSANCE ZONE CORP.  
P.O. BOX 9129  
LOUISVILLE, KY 40209  
D.B. 9109, PG. 352

**RESTORATION  
AGREEMENT AREA**  
RESTORATION OF 4.0 ACRES  
OF WOODED WETLAND

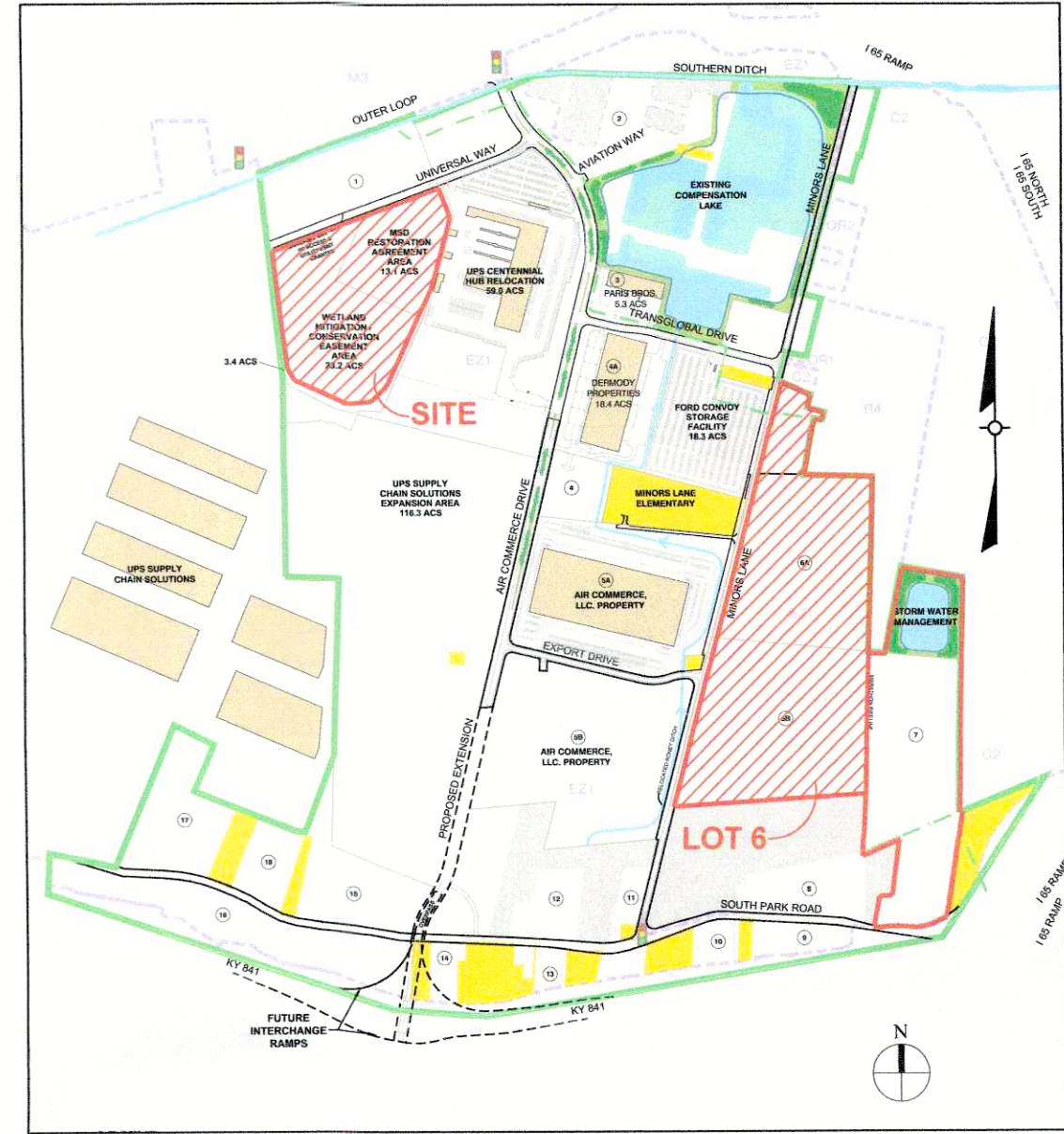
**EZ-1  
SW**

T.B. 3898, LOT 1  
BT, OH, LLC.  
55 GLENLAKE PARKWAY NE  
ATLANTA, GA 30328  
D.B. 9166, PG. 594

**CONSERVATION  
EASEMENT AREA**  
PRESERVATION OF 13.4  
ACRES OF WOODED WETLAND

**EZ-1  
SW**

T.B. 649, LOT 529  
LOUISVILLE RENAISSANCE ZONE CORP.  
P.O. BOX 9129  
LOUISVILLE, KY 40209  
D.B. 9109, PG. 352



LOCATION MAP

**SITE DATA**

EXISTING ZONING:	EZ-1
FORM DISTRICT:	SUBURBAN WORKPLACE
EXISTING USE:	CONSERVATION/RESTORATION
PROPOSED USE:	CONSERVATION/RESTORATION
GROSS SITE AREA:	36.279 AC
CONSERVATION EASEMENT AREA:	23.178 AC
RESTORATION AGREEMENT AREA:	13.101 AC

**TREE CANOPY CALCULATIONS**

EXISTING TREE CANOPY	757,944 SF
TREE CANOPY USED	464,639 SF
(56,603 SF AT CONVOY LOT - 13LSCAPE1020)	
(16,742 SF AT TRACT 3 - 13LSCAPE1025)	
(32,619 SF AT TRACT 4 - 14LSCAPE1038)	
(89,307 SF AT TRACT 5 - 14LSCAPE1183)	
(269,368 SF AT TRACT 6 - NORTHPOINT)	
AVAILABLE TREE CANOPY REMAINING	293,305 SF

**NOTES:**

1. QUANTITIES FOR TREES PRESERVED AND PLANTED WERE TAKEN DIRECTLY FROM THE 'APPLICATION FOR SECTION 404 INDIVIDUAL PERMIT AND SECTION 401 WATER QUALITY CERTIFICATION' PROVIDED TO THE U.S.A.C.O.E. & THE KENTUCKY DIVISION OF WATER IN AUGUST OF 2006.
2. EXACT AMOUNT OF BORROWED TREE CANOPY MAY FLUCTUATE BETWEEN THE PRELIMINARY PLAN AND CONSTRUCTION PLANS. EXACT NUMBERS TO BE DETERMINED AT THE TIME OF LANDSCAPE PLAN APPROVAL.

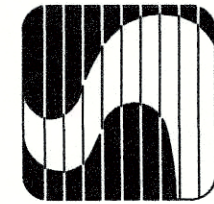
**LEGEND**

- Ex. Sanitary Sewer W/ Manhole
- - - 465 - - - Ex. Major Contour
- - - 466 - - - Ex. Minor Contour
- [Green Hatched Box] Conservation Easement Area
- [Blue Hatched Box] Restoration Agreement Area
- [Green Dotted Line] Existing Trees

**RECEIVED**  
JUN 05 2015  
LANDSCAPE &  
DESIGN SERVICES

CASE # 15DEVPLAN1068 &  
15DEVPLAN1069  
WM # 11169  
PRIMARY T.B. 650, LOT 6  
OWNER  
LOUISVILLE RENAISSANCE ZONE  
CORPORATION P.O. BOX 9129  
LOUISVILLE, KY 40209  
D.B. 8985, PG. 395, D.B. 9727, PG.  
34  
DEVELOPER  
NORTHPOINT DEVELOPMENT, LLC  
5015 NW CANAL STREET, STE. 200  
RIVERSIDE, MO 64151

SHEET TITLE: ALTERNATIVE COMPLIANCE LANDSCAPE PLAN	DATE
	NO. REVISION
PROJECT TITLE: CONSERVATION EASEMENT & RESTORATION AGREEMENT AREA RENAISSANCE SOUTH BUSINESS PARK	JOB NO. 2504-NP
	SCALE: 1" = 100'
	DATE: 06/08/15
	DRAWING NO.: <b>LAND</b>
	SHEET 1 OF 1



**SABAK, WILSON & LINGO, INC.**  
ENGINEERS, LANDSCAPE ARCHITECTS & PLANNERS  
THE HENRY CLAY  
608 S. THIRD STREET,  
LOUISVILLE, KENTUCKY 40202  
(502) 584 - 6271

15DEVPLAN1068