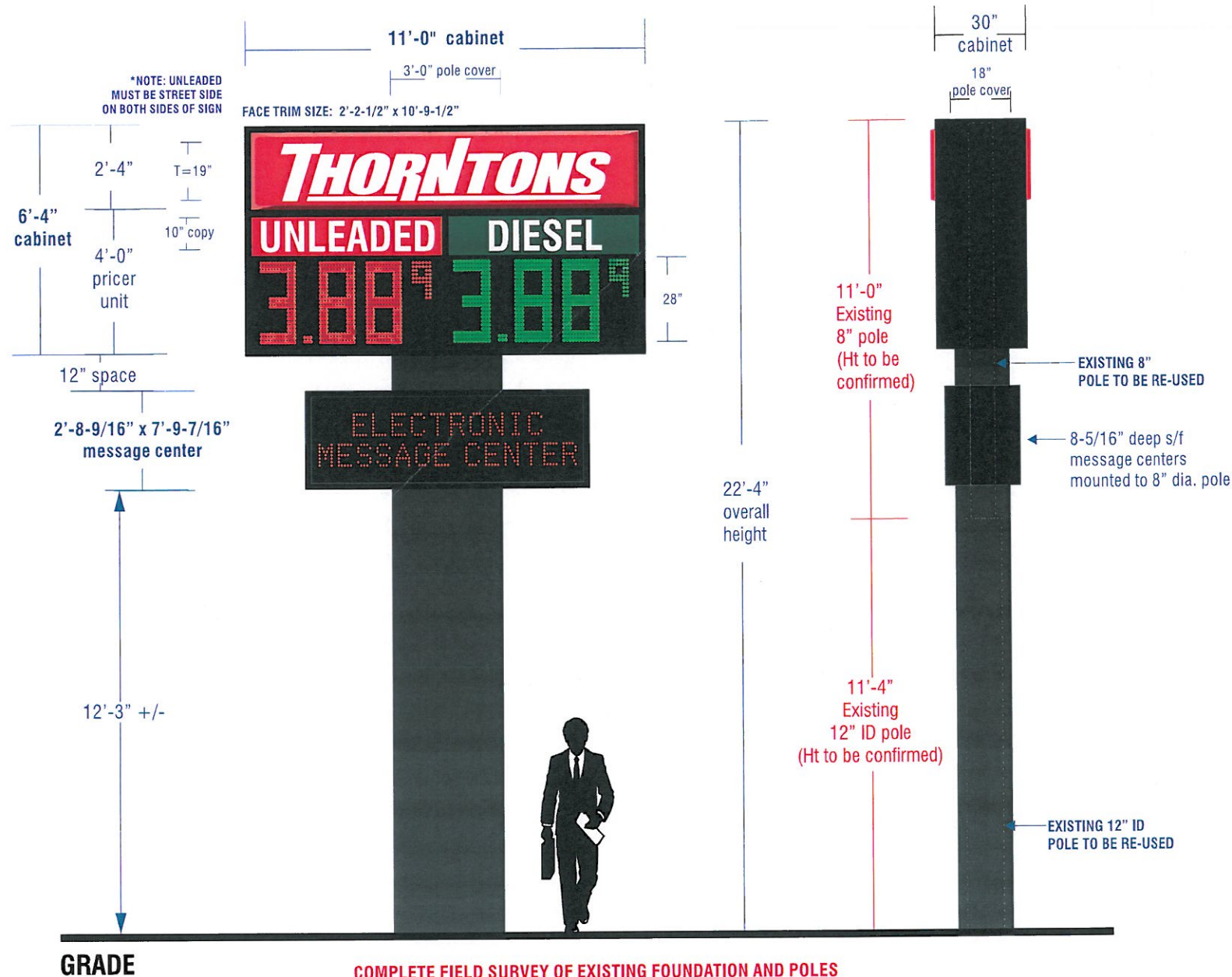


D/F ILLUMINATED PYLON RE-WORK

Scale: 1/4" = 1'-0"

69.7 main cabinet
21.5 EMU
91.2 total square feet



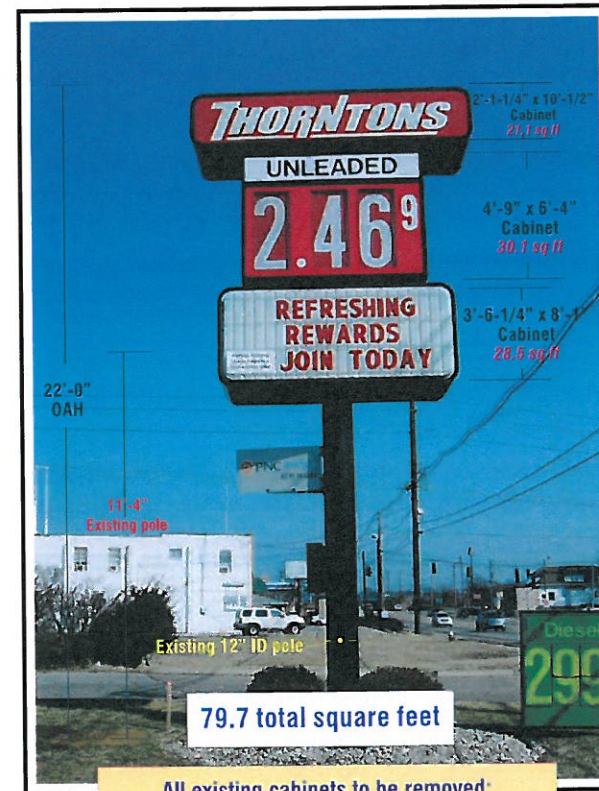
COMPLETE FIELD SURVEY OF EXISTING FOUNDATION AND POLES
REQUIRED TO ENSURE THEY WILL SUPPORT WEIGHT OF NEW CABINETS

PRESENTATION PURPOSES ONLY
Drawing not intended for manufacturing purposes at this time

- CABINET:** 30" deep alum. construction w/ 2" retainers & 2" divider bar - all painted Black; Cabinet to sleeve ovetop existing 8" internal support & saddle weld into place as required; Sign cabinet provided to Thorntons by Sunshine Electronic Displays
- HEADER FACE:** (2) Two gloss panned polycarbonate faces w/ reverse sprayed graphics to match colors shown provided by MC Sign Company
- ILLUM.:** Internal White Sunshine LED lightstrips to illuminate header unit and commodity panels. Power supplies to be housed within cabinet
- PRICING UNIT:** Sunshine double pricer unit - 30" deep; Character height = 28"; Red & Green LED digit colors; Commodity panels are flat white polycarbonate panels w/ reverse weeded red & green vinyl overlays
- MESSAGE CENTER:** (2) Single faced EMC cabinets - Monochromatic - Red display 2'-8-9/16" x 7'-9-7/16" x 8-5/16" deep, 3" x 3" x 3/8" wide steel clip angle for mounting; Aluminum cladding to be provided and installed to top, bottom & sides of EMC and painted black by sign installer.
- COMMUNICATION REQUIREMENTS:** Price sign to be wireless/radio communication. EMC to be hardwired to Fiber Ethernet cable provided by customer.
- SUPPORT:** Top cabinet to sleeve ovetop internal existing 8" diameter support; 8" pole stubs into existing 12" ID external support pole
- POLE COVER:** All poles to be repainted gloss Black
Fabricated alum. construction min. 063 - painted Black

Existing Conditions

For Reference Only

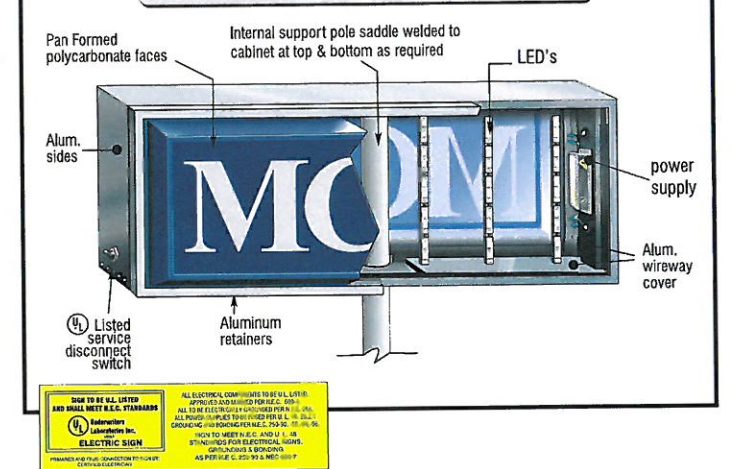


All existing cabinets to be removed;
Existing support poles to be re-used if possible

COLOR MATCHING

- Gripflex 585 Flame Red
- UNLEADED:
3M 3630-143 Poppy Red
- DIESEL:
3M 3630-76 Holly Green
- Black

D/F ILLUMINATED CABINET - Pan Face



www.mcsign.com

Corporate Offices:

8959 TYLER BLVD.
MENTOR, OHIO 44060
440-209-6200

Manufacturing Facility:

334 INDUSTRIAL PARK RD.
BLUEFIELD, VA 24605
877-779-9977

CLIENT:

THORNTONS

ADDRESS:

STORE #098
4136 CANE RUN ROAD
LOUISVILLE, KY 40216

PAGE NUMBER

5

TICKET NO.:

283046

DATE:

02/20/15

DATE:

02/26/15 DN
06/11/15 AF

REVISIONS:

remove option a / remove every color block
Updated EMC; Revised Communication Note; Added pole cover

PROJECT MANAGER:

STEFANIE DENISTON

DESIGNER:

DN

ELECTRONIC FILE NAME:

THORNTONS\2015\KY\098 - LOUISVILLE

NOTE: PRINTS ARE THE EXCLUSIVE PROPERTY OF 'MCSIGN COMPANY'. ANY UNAUTHORIZED USE OR DUPLICATION WILL RESULT IN A 20% CHARGE PER OCCURANCE PER THE VALUE OF THE DISPLAY. © MC SIGN CO 1998

Sign On.
Partner with the best.



CLIENT SIGNATURE & APPROVAL DATE:

ISUAVRIS7