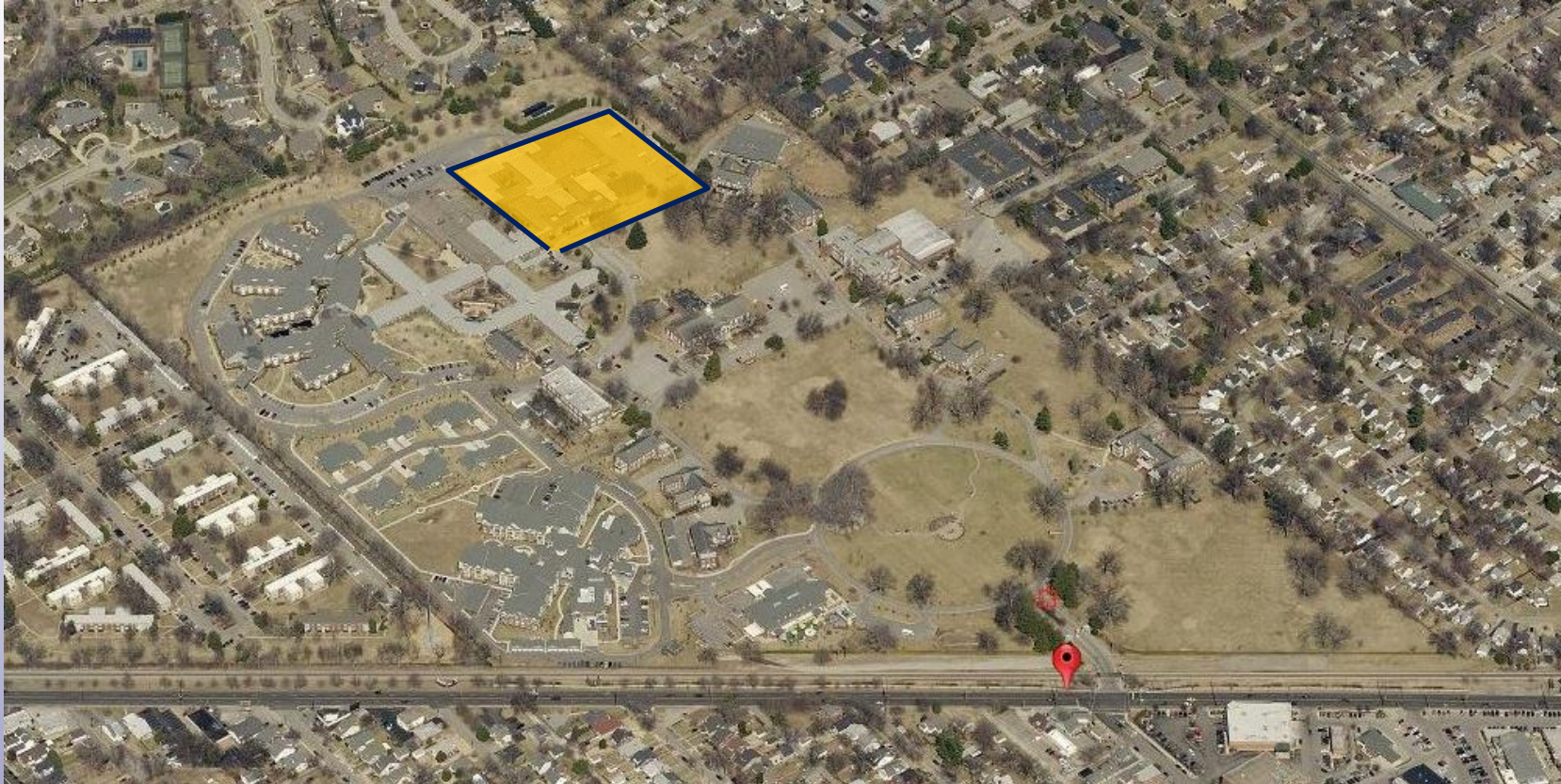


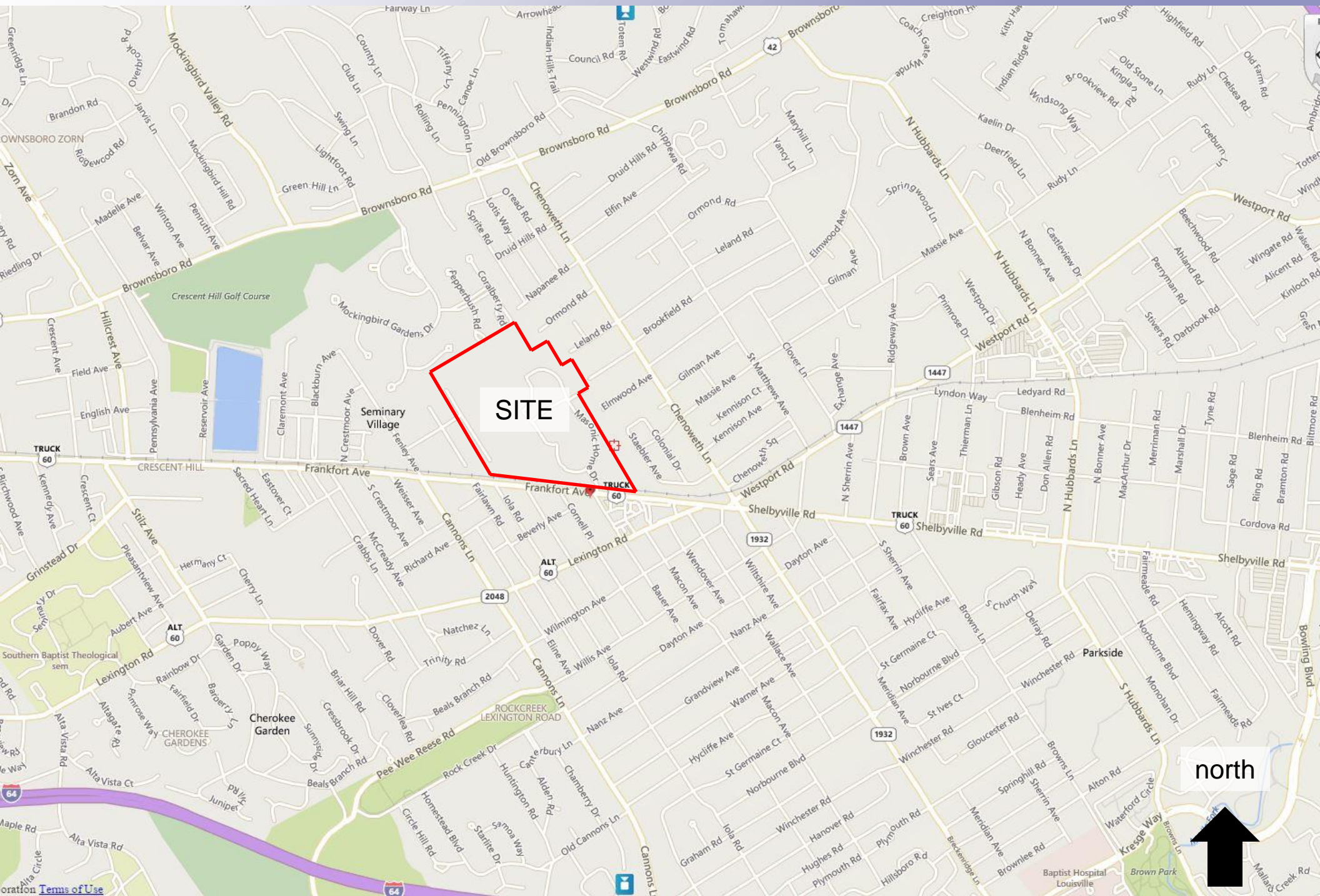
# **Grove Pointe Assisted Living**



**Development Review Committee  
Revised Detailed District Development Plan  
January 20, 2016**



# Vicinity Map



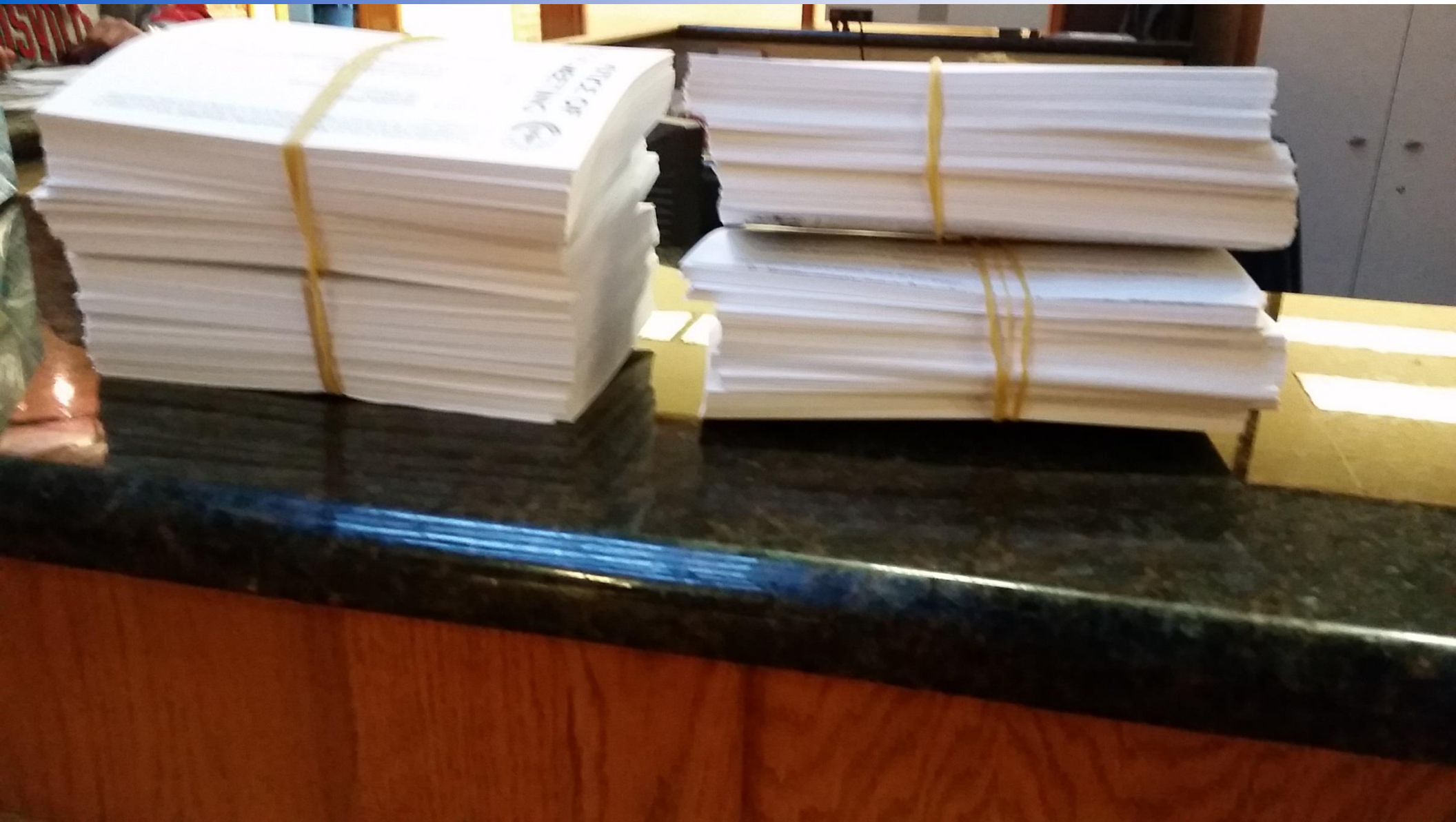


# Notification Area – 422 Notices Sent for Each Case





## What 844 Notices Looks Like.....



- **Optional Neighborhood Meeting (first tier property owners)**
- **Additional letter from Masonic Homes sent to all in notification area**
- **Notice of hearings listed in Councilman Hollander's weekly email**



# Campus Vicinity



Proposed  
Independent Living  
The Meadows  
at Miralea



1" = 40'-0"

Site Plan

01 SEP 2015

Miralea Phase III Campus

MASONIC HOMES of KENTUCKY

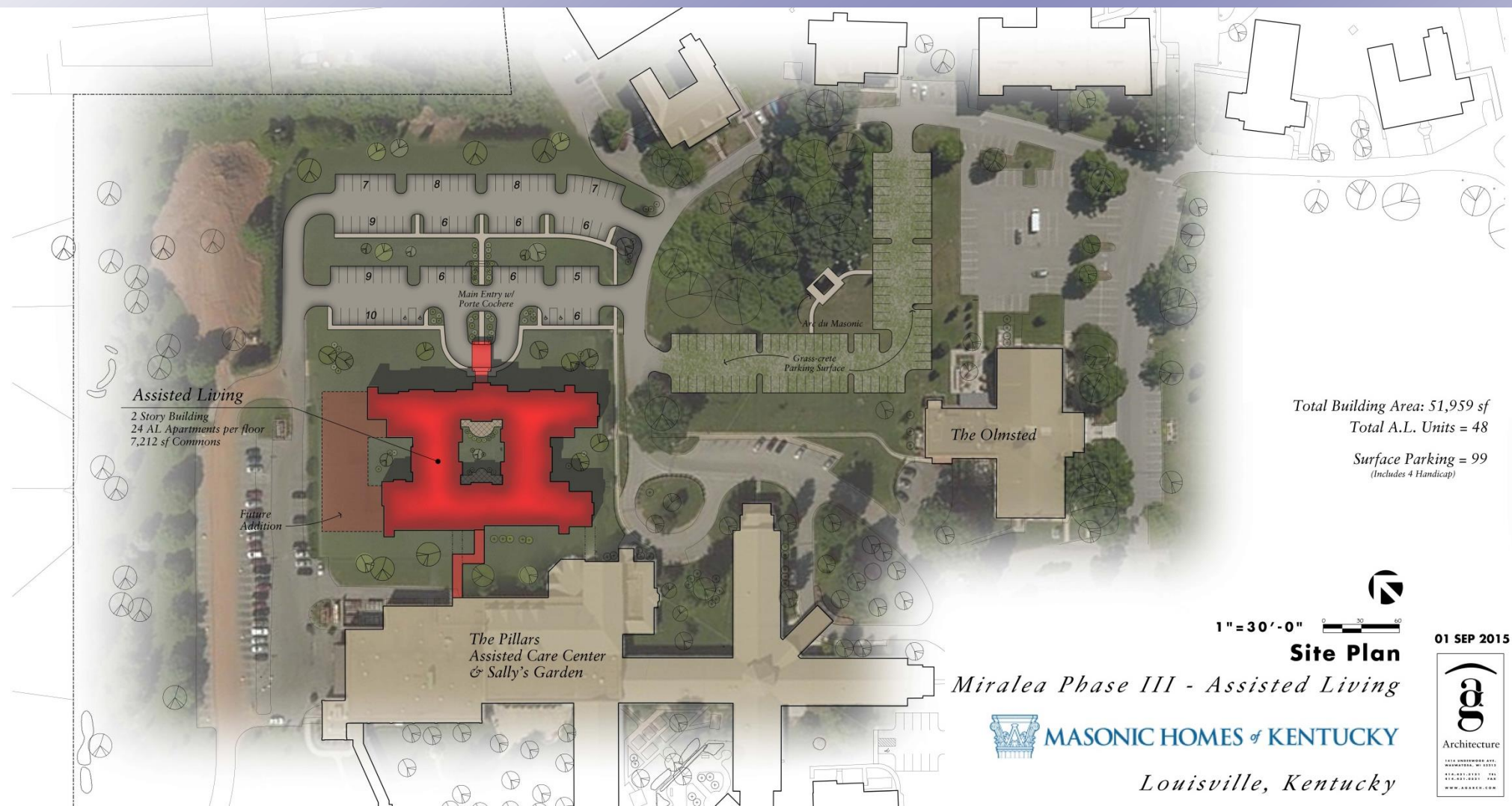
Louisville, Kentucky





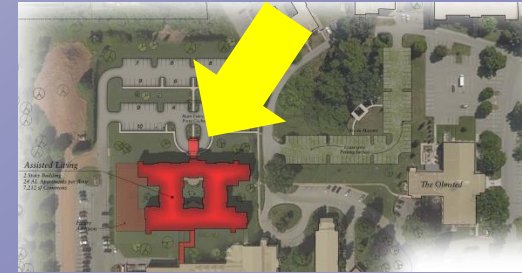
# Grove Pointe Assisted Living

- **Personal support (meals, medication management, bathing, dressing, transportation) within an individual apartments with common “household model” space**
- **72 units; Phase One is 48 units**
- **Adequate indoor and outdoor open/recreational space provided**
- **Reconfigured staff parking**
- **Rain gardens/bioswales and reduction of impervious areas**
- **Construction to begin early 2017**



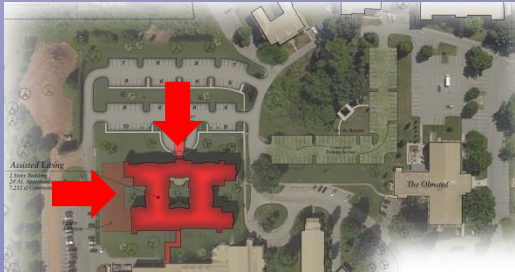


# Grove Pointe Assisted Living Entry





# Grove Pointe Assisted Living



1/8"=1'-0"

## EXTERIOR ELEVATIONS

*Miralea Phase III - Assisted Living*



*Louisville, Kentucky*

01 Sept 2015





# Existing Infirmary

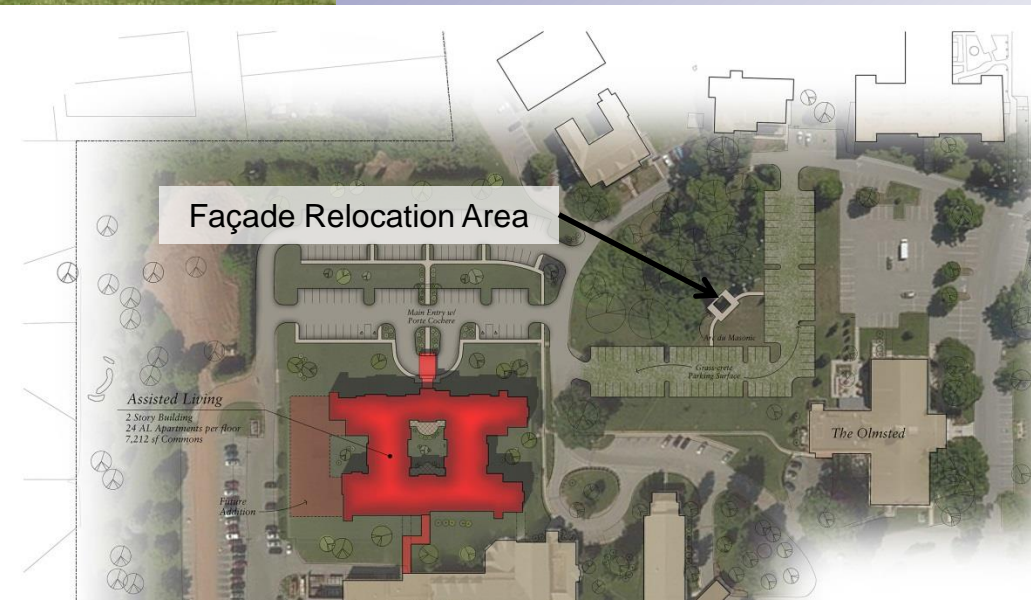


- **Building is on the National Register (2002)**
- **Constructed in 1927 – Joseph & Joseph**
- **“The building features a stone-faced entrance portico with Corinthian columns and topped with wrought iron balustrade. The central section is flanked by two one story symmetrical wings”**
  - **National Register of Historic Places Registration Form**





# Façade Relocation





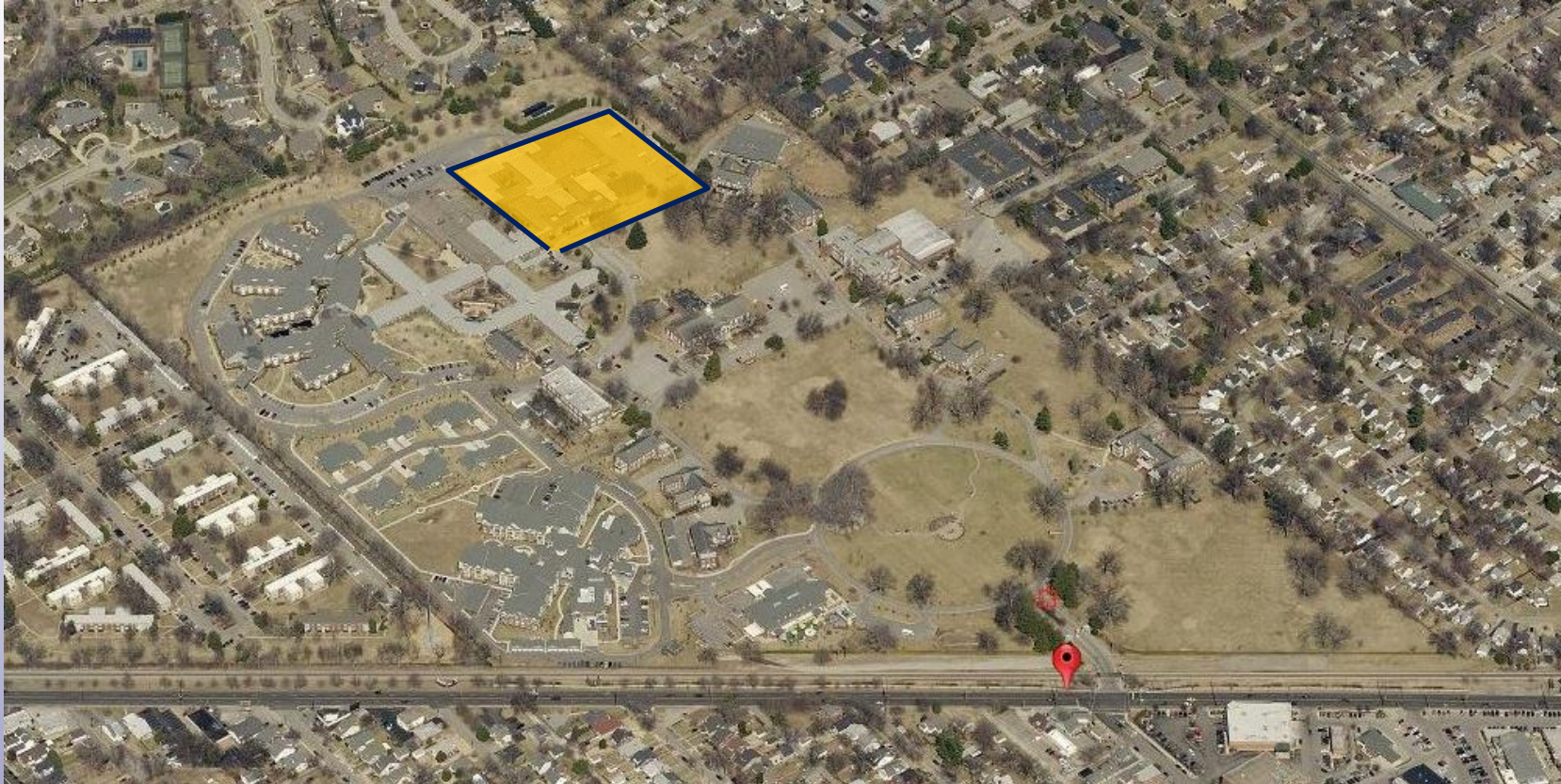
# Building Demolition and Preservation



- **Landmarks reviewed demolition permit and all procedures (30 day notification) were followed with no neighbor objections.**
- **Demolition permit is nearly issued; awaiting utility disconnection (current) and roof abatement. Majority of asbestos has been abated; roof abatement will be first step in complete building demolition.**
- **Building has been vacant since 2011 when SSCS replaced the dated, institutional facility with a new, state of the art one.**
- **Stained glass windows from the chapel were previously relocated to Sam Swope Care Center**
- **Rookwood antique pottery tiles from infirmary have been salvaged and will be used in Grove Pointe**



# **Grove Pointe Assisted Living**



**Development Review Committee  
Revised Detailed District Development Plan  
January 20, 2016**