

## Site Context (Current Zoning R-6)

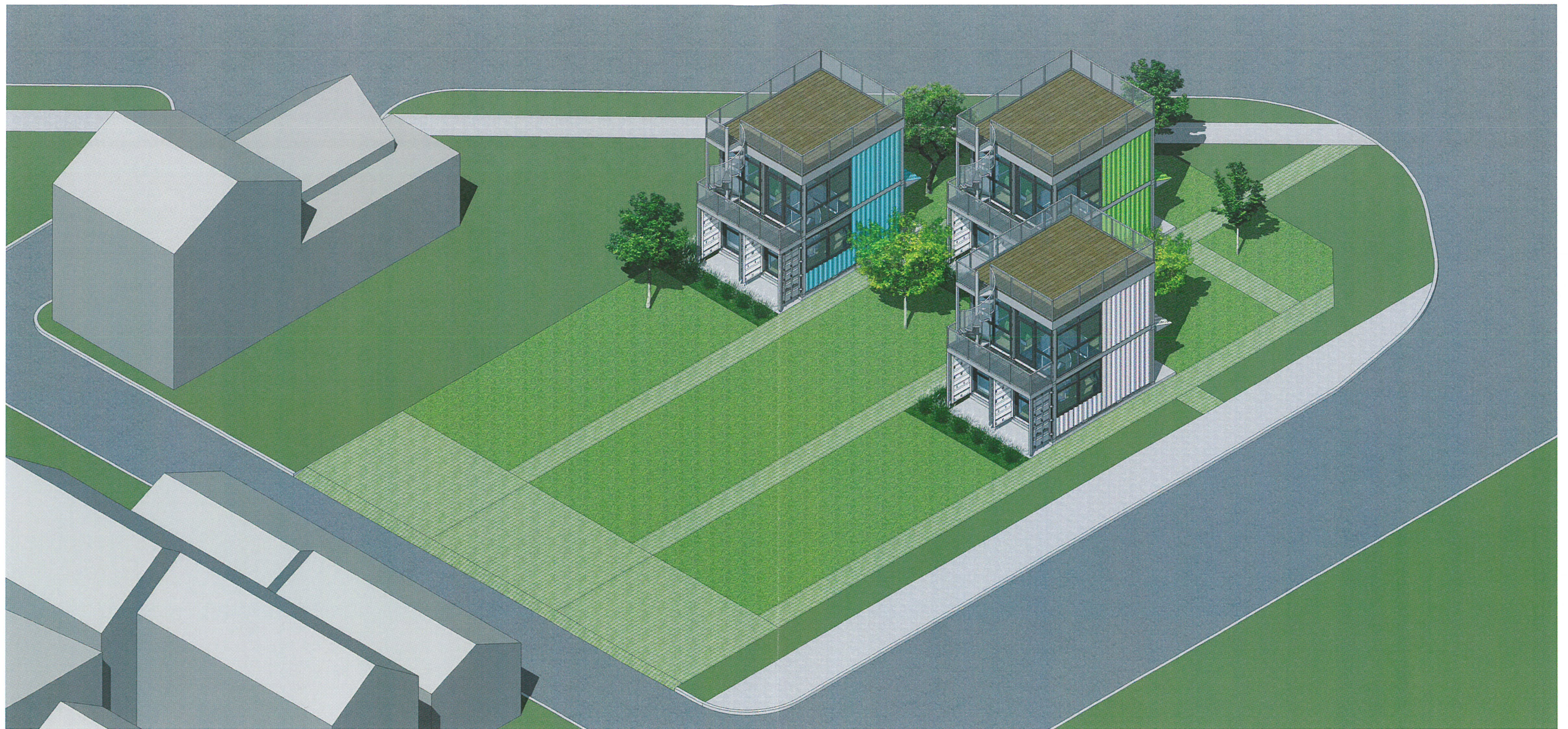
**Schnitzelburg Container Apartments**  
Louisville, Kentucky 40217

**RECEIVED**  
JUL 29 2016  
PLANNING &  
DESIGN SERVICES

**FOXWORTH ARCHITECTURE PLLC**  
mfoxworth@foxworth-arch.com  
ph. 502.418.6270

**SCHEME A**  
28 JULY 2016  
SK-00A





Rear Site Aerial (Current Zoning R-6)

**Schnitzelburg Container Apartments**  
Louisville, Kentucky 40217

**RECEIVED**

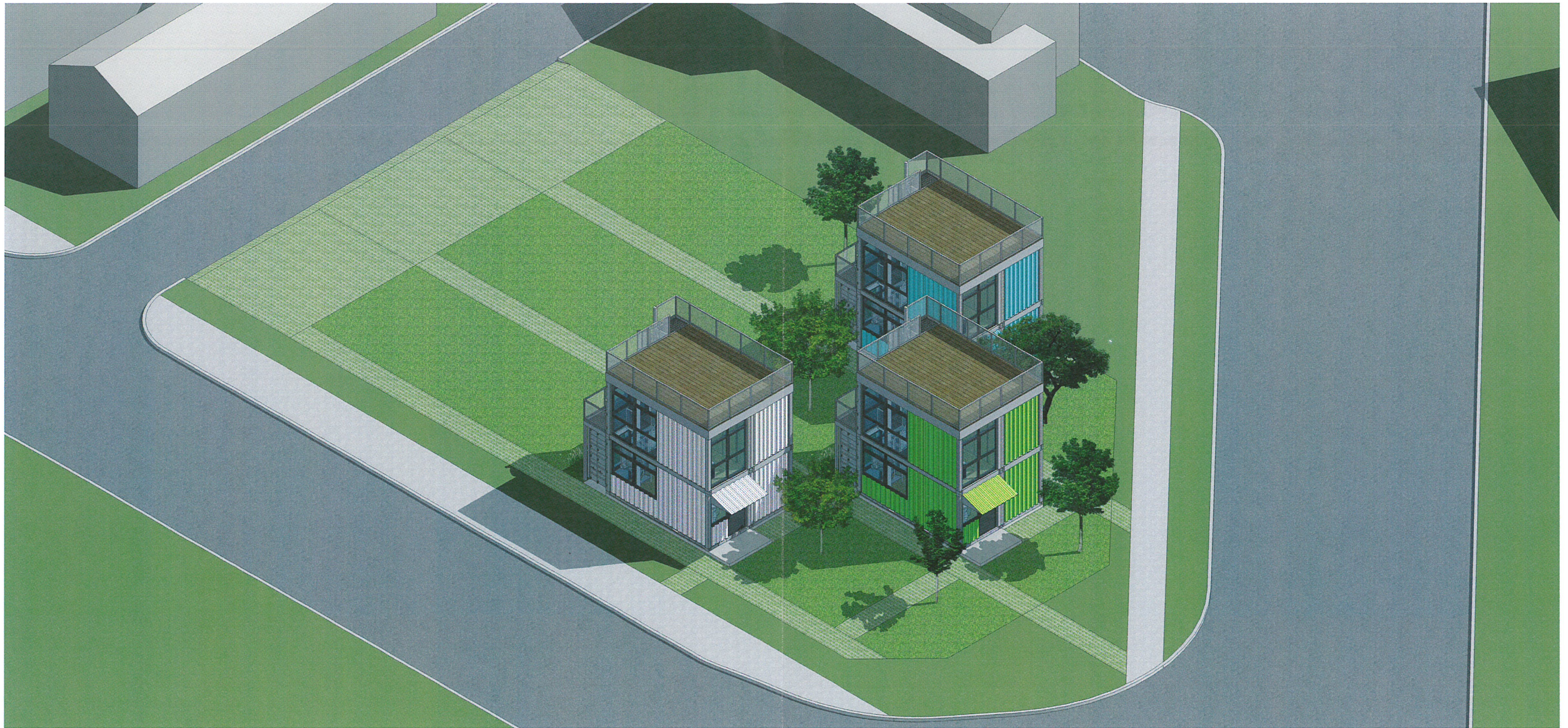
JUL 29 2016  
PLANNING &  
DESIGN SERVICES

**FOXWORTH ARCHITECTURE PLLC**  
mfoxworth@foxworth-arch.com  
ph. 502.418.6270

**SCHEME A**  
28 JULY 2016  
SK-01A

16 VARIANCE 1056





RECEIVED

JUL 29 2016

PLANNING &  
DESIGN SERVICES

Front Site Aerial (Current Zoning R-6)

**Schnitzelburg Container Apartments**  
Louisville, Kentucky 40217

**FOXWORTH ARCHITECTURE PLLC**  
mfoxworth@foxworth-arch.com  
ph. 502.418.6270

**SCHEME A**  
28 JULY 2016  
SK-02A

16 VARIANCE 1056