

Case No. 16DESIGNATION1000

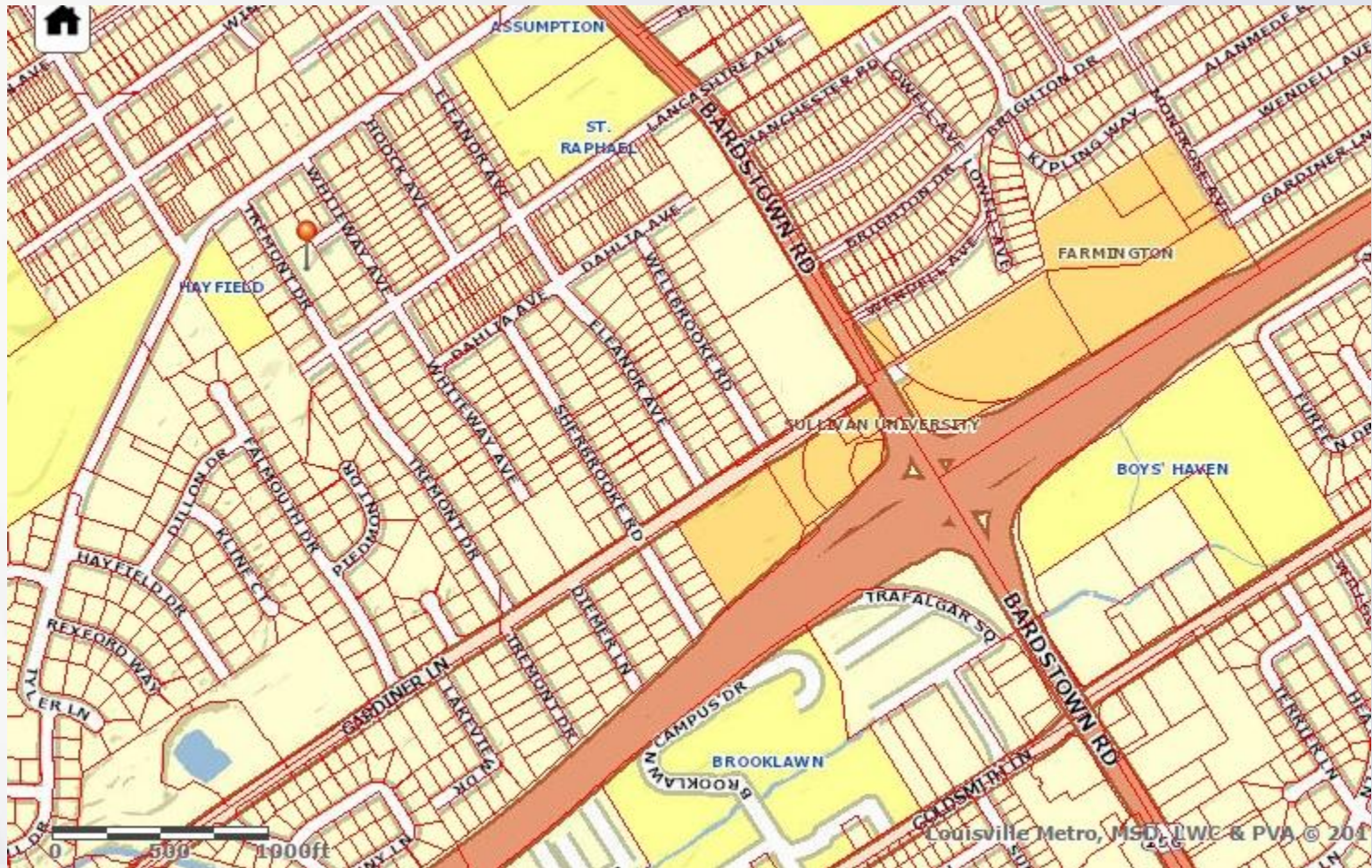
Proposed Local Landmark  
Designation

Powell-Smith House (Kalorama)  
2833 Tremont Dr.



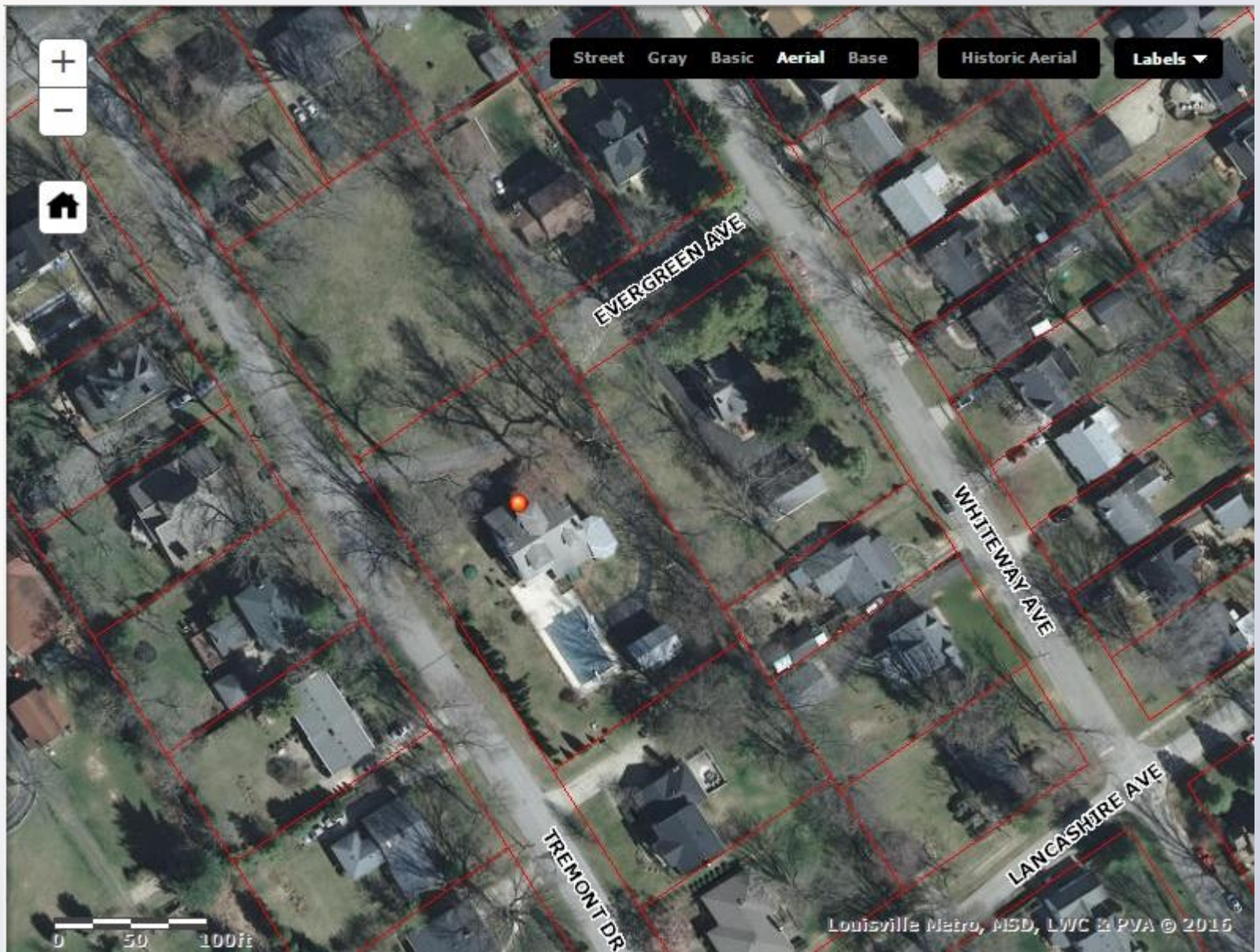
Landmarks Commission  
August 18, 2016

# Location



- Located in the Hayfield/Dundee area in the Upper Highlands
- Metro Council District 8- Tom Owen































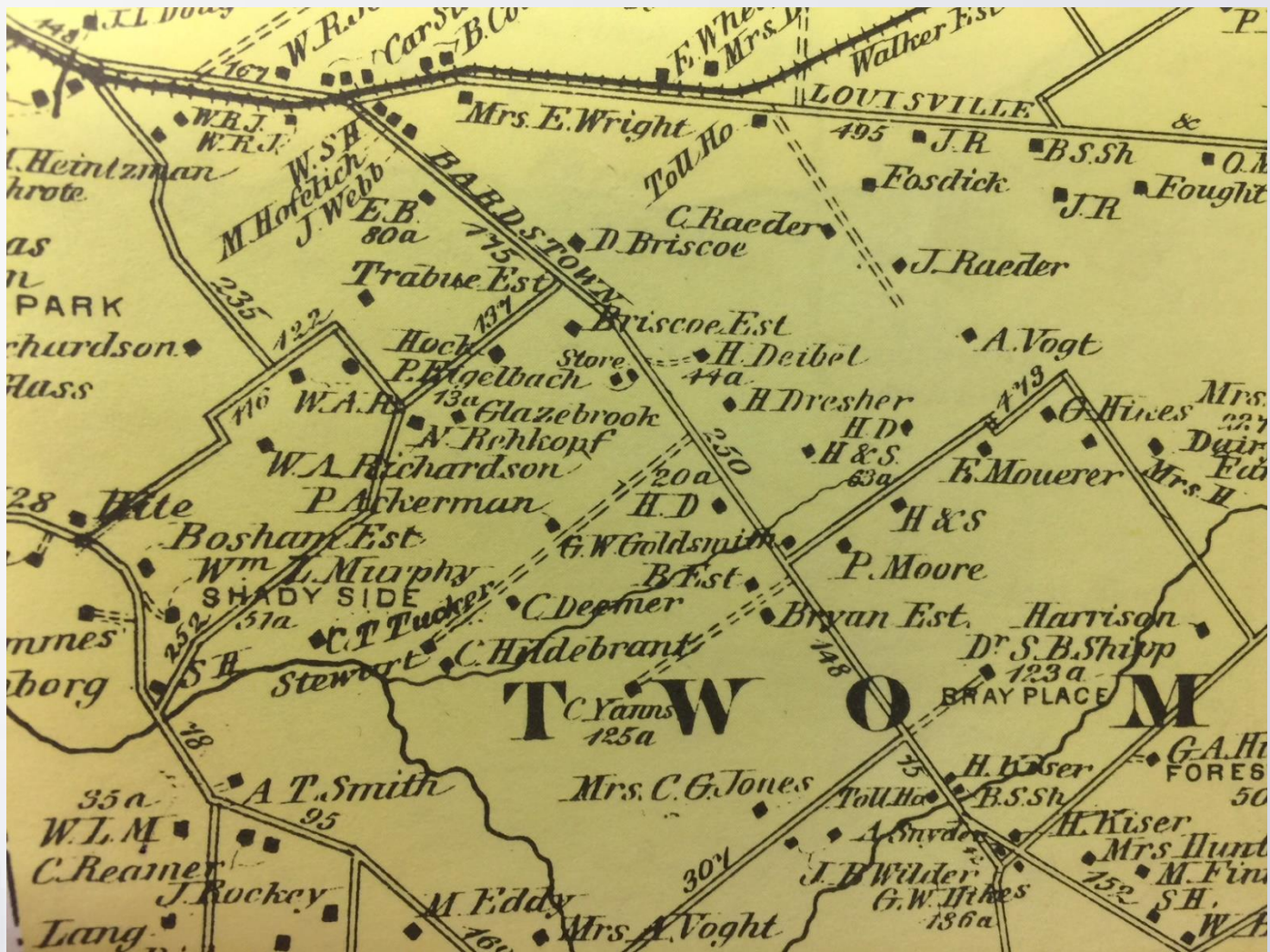








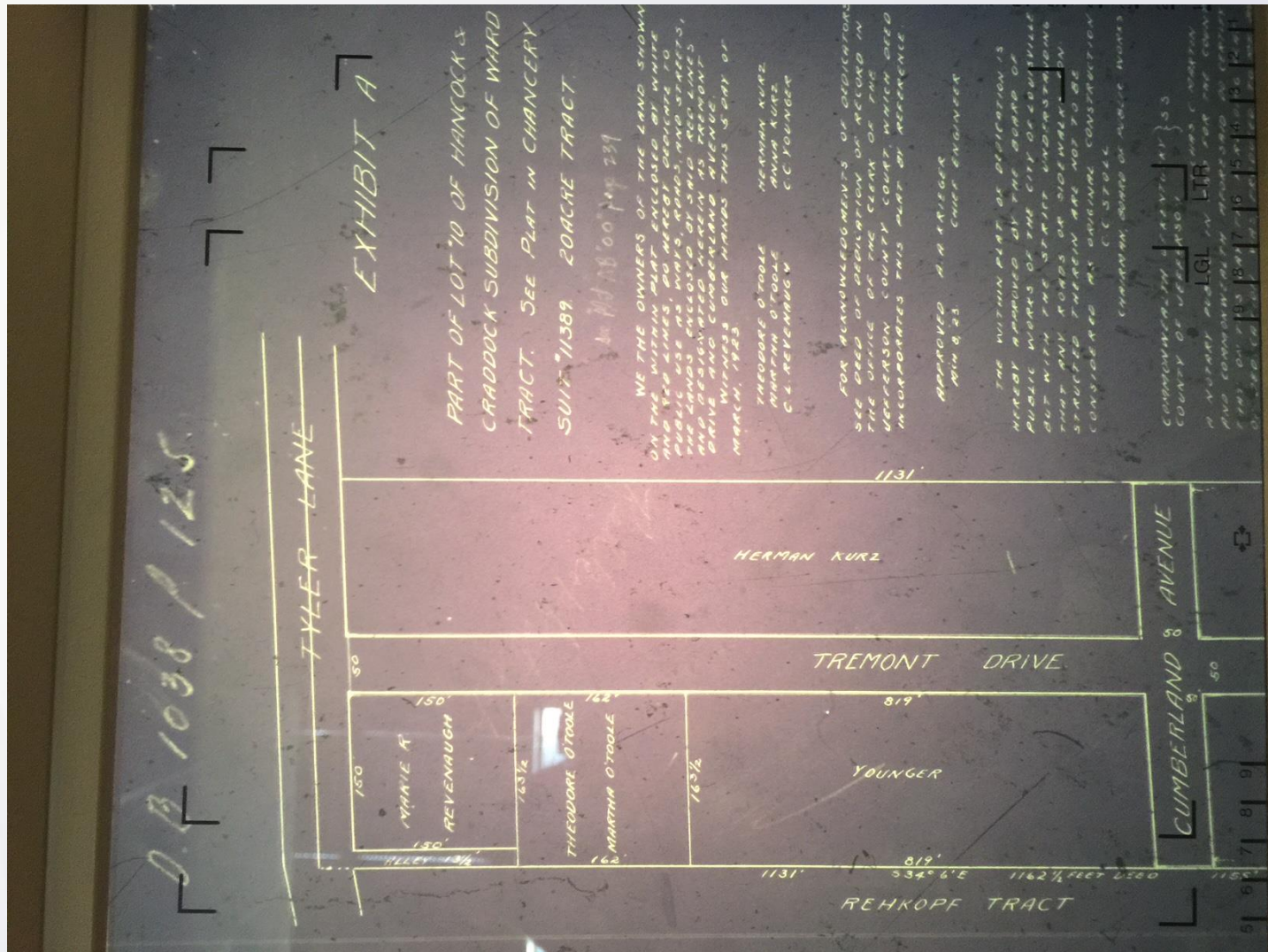
# Case#16DESGNATION1000





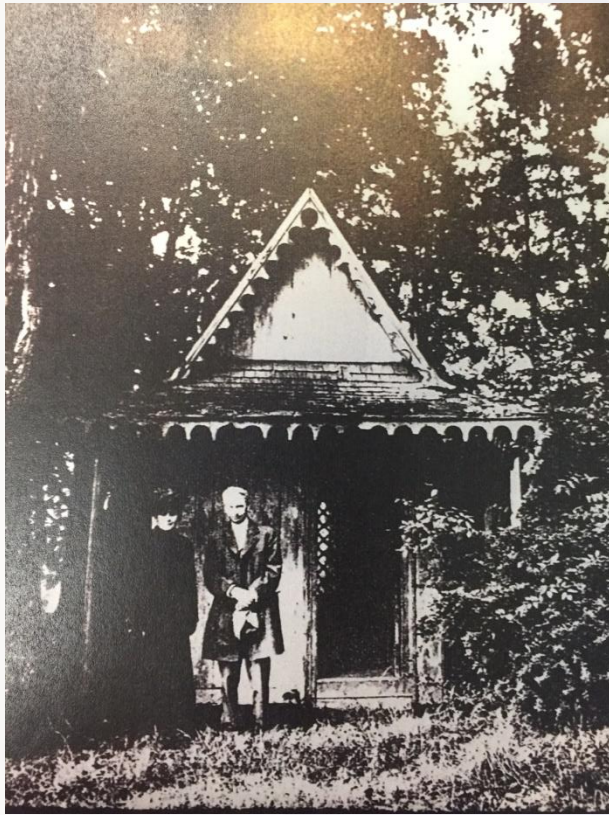


# Case#16DESIGNATION1000









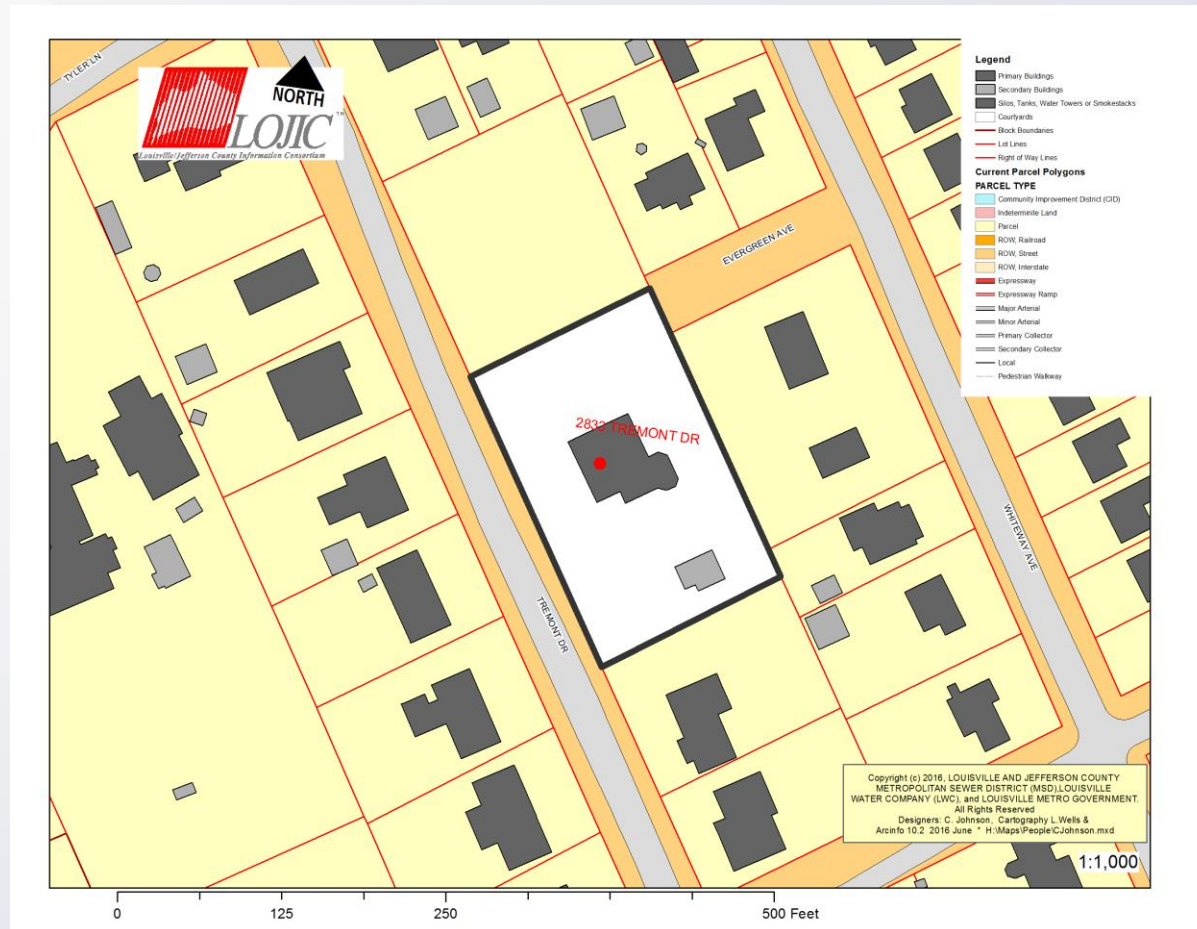








# Proposed Boundary



In considering the designation of any neighborhood, area, Property or Structure in the Jefferson County as a Local Landmark, or District, the Commission shall apply the following criteria with respect to such Structure, Property or District:

Local Landmark Designation Criteria	Comments	Meets	Does Not Meet
(a) Its character, interest, or value as part of the development or heritage of Louisville Metro, Jefferson County, the Commonwealth, or the nation.	Representative of the Antebellum period in Jefferson County, the Powell-Smith house, constructed in circa 1836 relates to significant period in the development of Jefferson County. This is a period when the urban core is growing and increased development along the Louisville-Bardstown Turnpike is occurring.	X	



Local Landmark Designation Criteria	Comments	Meets	Does Not Meet
(b) Its exemplification of the historic, aesthetic, architectural, archaeological, prehistoric or historic archaeological, educational, economic, or cultural heritage of Louisville County, the Commonwealth, or the nation.	The house is associated with the girls school established by Bishop Smith, known as Kalorama. The site is also likely to yield significant archeological information about the Antebellum-period of development including a possibility of enslaved persons dwellings.	X	

Local Landmark Designation Criteria	Comments	Meets	Does Not Meet
(c) Its location as a site of a significant historic event.			X
(d) Its identification with a person or persons who significantly contributed to the culture and development of Louisville Metro, Jefferson County, the Commonwealth, or the nation.	Bishop Benjamin Bosworth Smith was the first Episcopal Bishop of Kentucky. Bishop Smith was was also involved in state government and served as the Superintendent of Public Schools for the State of Kentucky.	X	



Local Landmark Designation Criteria	Comments	Meets	Does Not Meet
(e) Its embodiment of distinguishing characteristics of an architectural type or specimen.			X

Local Landmark Designation Criteria	Comments	Meets	Does Not Meet
(f) Its identification as the work of an architect, landscape architect, or master builder whose individual work has influenced the development of Louisville Metro, Jefferson County, the Commonwealth, or the nation.			X



Local Landmark Designation Criteria	Comments	Meets	Does Not Meet
(g) Its embodiment of elements or architectural design , detail, materials, or craftsmanship, which represents a significant architectural innovation.			X

Local Landmark Designation Criteria	Comments	Meets	Does Not Meet
<p>(h) Its relationship to other distinctive areas, which are eligible for preservation according to a plan based on an historic, cultural, or architectural motif.</p>	<p>The Powell-Smith House is in close proximity to Farmington which is an early example of Federal architecture in the area. The Powell-Smith House is a surviving example of the development in the area as an suburban development rather than a Plantation house. This shift in land use indicates the growing development of Jefferson County as an urbanized area. A 2011 Kentucky Historic Resources Survey Form indicated that the building is eligible for listing in the NRHP as part of a group of multiple resources.</p>	X	



Local Landmark Designation Criteria	Comments	Meets	Does Not Meet
(i) Its unique location or physical characteristics representing an established and familiar visual feature or which reinforce the physical continuity of a neighborhood, area, or place within Louisville Metro.	The house was constructed in 1836 by Dr. Powell and sold as a speculative property. It represents an early example of community development. It is a surviving example of this settlement period in Jefferson County along Bardstown Rd.	X	