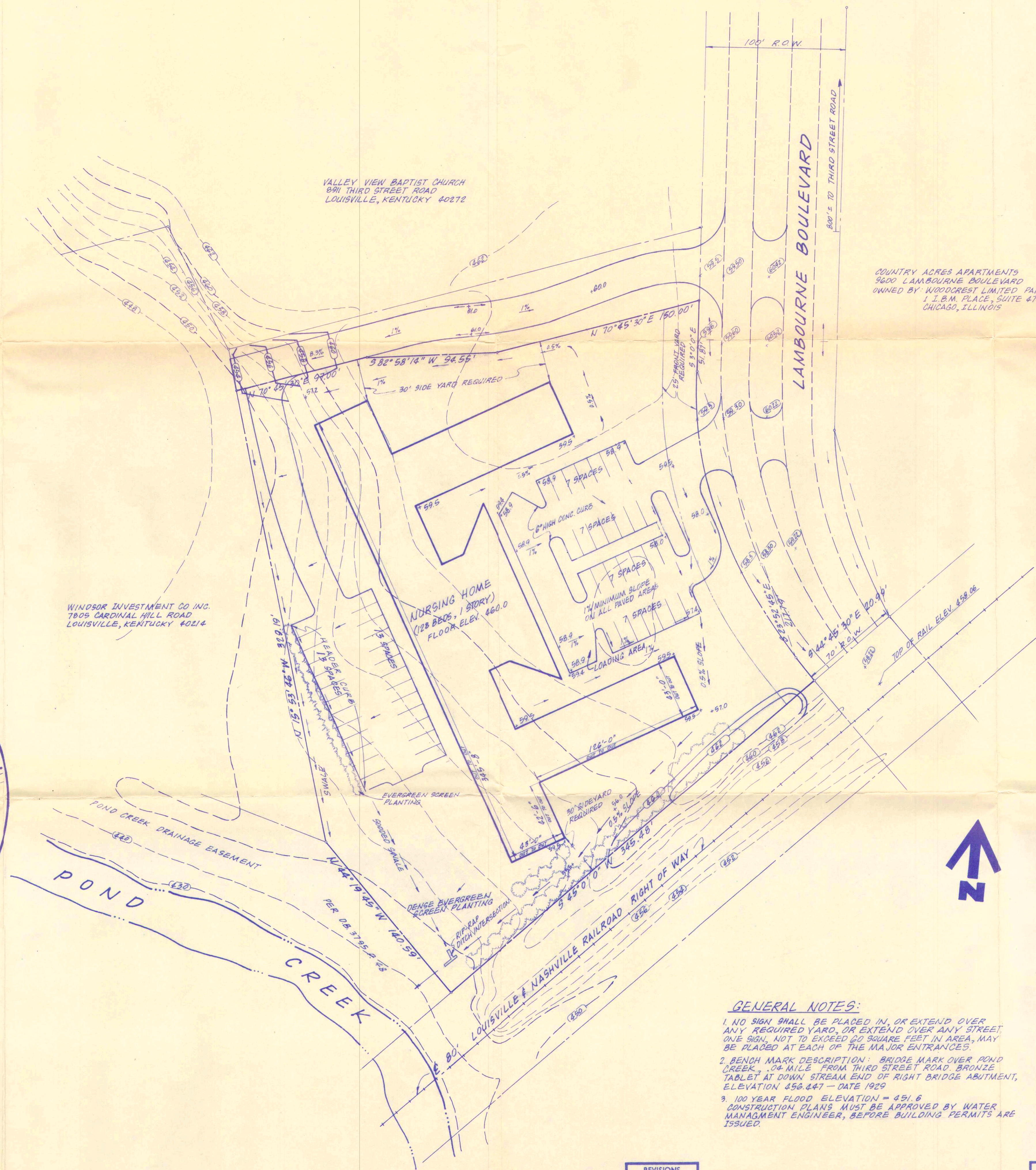


VICINITY MAP  
NO SCALE



PARKING DATA		
TOTAL NUMBER OF BEDS		128
TOTAL PARKING SPACES REQUIRED (2 SPACES PER 5 BEDS)		51.2
TOTAL NUMBER OF SPACES		54
TOTAL ACREAGE WITHIN SITE =		2.909 AC.

# PRELIMINARY APPROVAL DEVELOPMENT PLAN

LOUISVILLE-JEFFERSON COUNTY DEPARTMENT  
OF TRAFFIC ENGINEERING  
DATE 11-30-77 ASSISTANT DIRECTOR

APPROVED:  
LOUISVILLE AND JEFFERSON COUNTY BOARD OF  
ZONING ADJUSTMENT  
By Paul K. Zipp SECRETARY

RECEIVED  
DEC 9 1977

LOUISVILLE AND JEFFERSON COUNTY  
PLANNING COMMISSION

PRELIMINARY APPROVAL  
SURFACE WATER CONTROL  
Conditions of Approval:

11-30-77  
David R. Dushoff  
WATER MANAGEMENT ENGINEER  
JEFFERSON COUNTY

## GENERAL NOTES:

1. NO SIGN SHALL BE PLACED IN, OR EXTEND OVER ANY REQUIRED YARD, OR EXTEND OVER ANY STREET, OR BE 90% NOT TO EXCEED 20 SQUARE FEET IN AREA, MAY BE PLACED AT EACH OF THE MAJOR ENTRANCES.
2. BENCH MARK DESCRIPTION: BRIDGE MARK OVER POND CREEK, .04 MILE FROM THIRD STREET ROAD, BRONZE TABLET AT DOWN STREAM END OF RIGHT BRIDGE ABUTMENT, ELEVATION 456.447 - DATE 1929
3. 100 YEAR FLOOD ELEVATION = 451.6  
CONSTRUCTION PLANS MUST BE APPROVED BY WATER MANAGEMENT ENGINEER, BEFORE BUILDING PERMITS ARE ISSUED.

REVISIONS  
NOV. 29, 1977  
NOV. 30, 1977

SABAK & WILSON, INC.  
ENGINEERS & LANDSCAPE ARCHITECTS  
300 WEST MAIN  
LOUISVILLE, KENTUCKY

SCALE  
1"=40'  
DRAWN DTA  
DATE NOV 14, 77

"PLAN FOR CONDITIONAL USE PERMIT"  
FOR: BEST PERSONAL CARE HOME, INC.  
1014 SOUTH FLOYD STREET  
LOUISVILLE, KENTUCKY 40203

FILE # 224-B  
No. 1  
1  
1