

The Moore-Dunne House of 609 Blankenbaker Lane: A Case for Landmarking this Historic Louisville Home





Aerial view of Moore-Dunne House, c1960

Criterion (a) its character as part of the development or heritage of Louisville and Jefferson County, **Criterion (b)** its exemplification of the historic, aesthetic, architectural heritage of Louisville

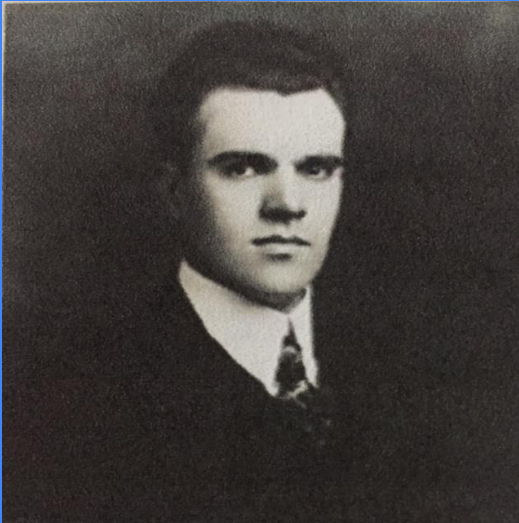
Built in 1923 for Dr. John W. Moore, Dean
of the UofL School of Medicine

Characteristic of the development
heritage of Louisville and Jefferson
County

Designed by Carl Augustus Zeigler
(1878-1952) of Philadelphia



Criterion (d) its identification with a person who significantly contributed to the culture and development of Louisville Metro, Jefferson County, the Commonwealth and the nation: **John Walker Moore**



Chairman, U of L School of Medicine, 1923 -1949

Dean, U of L School of Medicine, 1929-1949

Alben W. Barkley Professor of Medicine, 1949 -1952

Landmark research lead to his development of the dye indicator dilution measurement of cardiac output in humans, still used today

Moore College of U of L School of Medicine named in his honor

Criterion (e), and (f)

(e) Its embodiment of distinguishing characteristics of an architectural type or specimen.

(f) Its identification as the work of an architect, landscape architect, or master builder whose individual work has influenced the development of Louisville Metro, Jefferson County, the Commonwealth, or the nation.

Criterion (g)

- **Criterion (g)** its embodiment of elements of or architectural design , detail, materials, or craftsmanship, which represents a significant architectural innovation



Criterion (h) its relationship to other distinctive areas, which are eligible for preservation



- Surrounded by National Register eligible and National Register listed properties, and historic districts.
 - The Country Estates of River Road Historic District (NRHP 2000)
 - Morris Belknap House, or "Midlands" (NHRP 1983)
 - Locust Grove (NHL 1986)
 - River Hill/Stonebridge Historic District (NRE 2003)

Criterion (i) its unique location and physical characteristics which reinforce the physical continuity of the neighborhood within Louisville Metro



Prominent, highly visible location on top of Poplar Hill, facing the Ohio River

Classic early 20th century Colonial Revival architecture, characteristic of the neighborhood

Two other Ziegler houses of sympathetic design in the neighborhood

An important example of the predominant theme of Colonial and Georgian Revival architecture in the neighborhood

Why is it critical to landmark this home?

Our neighborhood and community want to save this house by having it designated as a local landmark

Our case demonstrates that this historic home meets 8 of the 9 possible criteria for landmark designation

Metro Louisville Historic Preservation office staff agree and recommends that it be landmarked

The Kentucky State Historic Preservation Officer agrees that the house meets National Register eligibility criteria