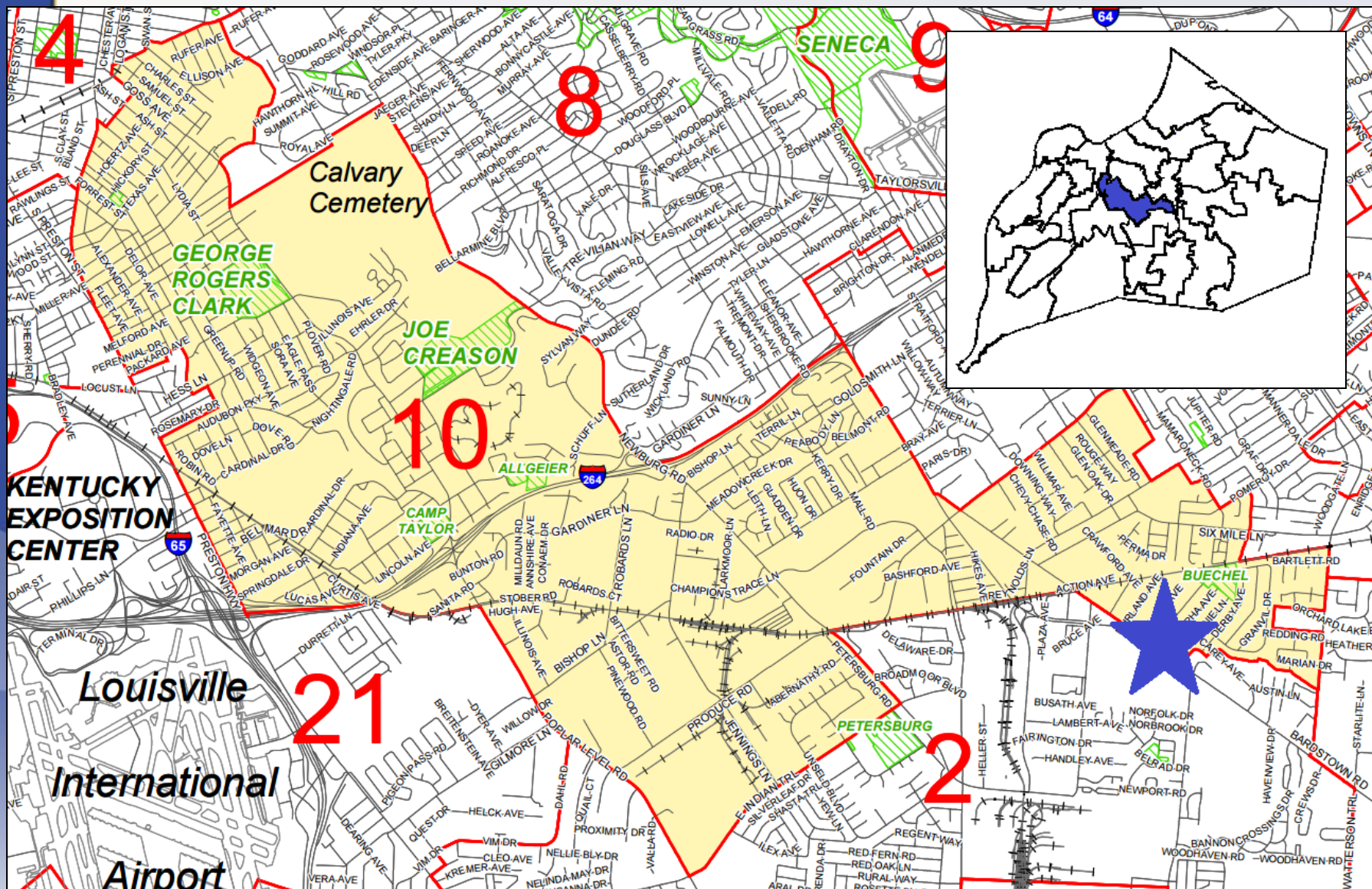


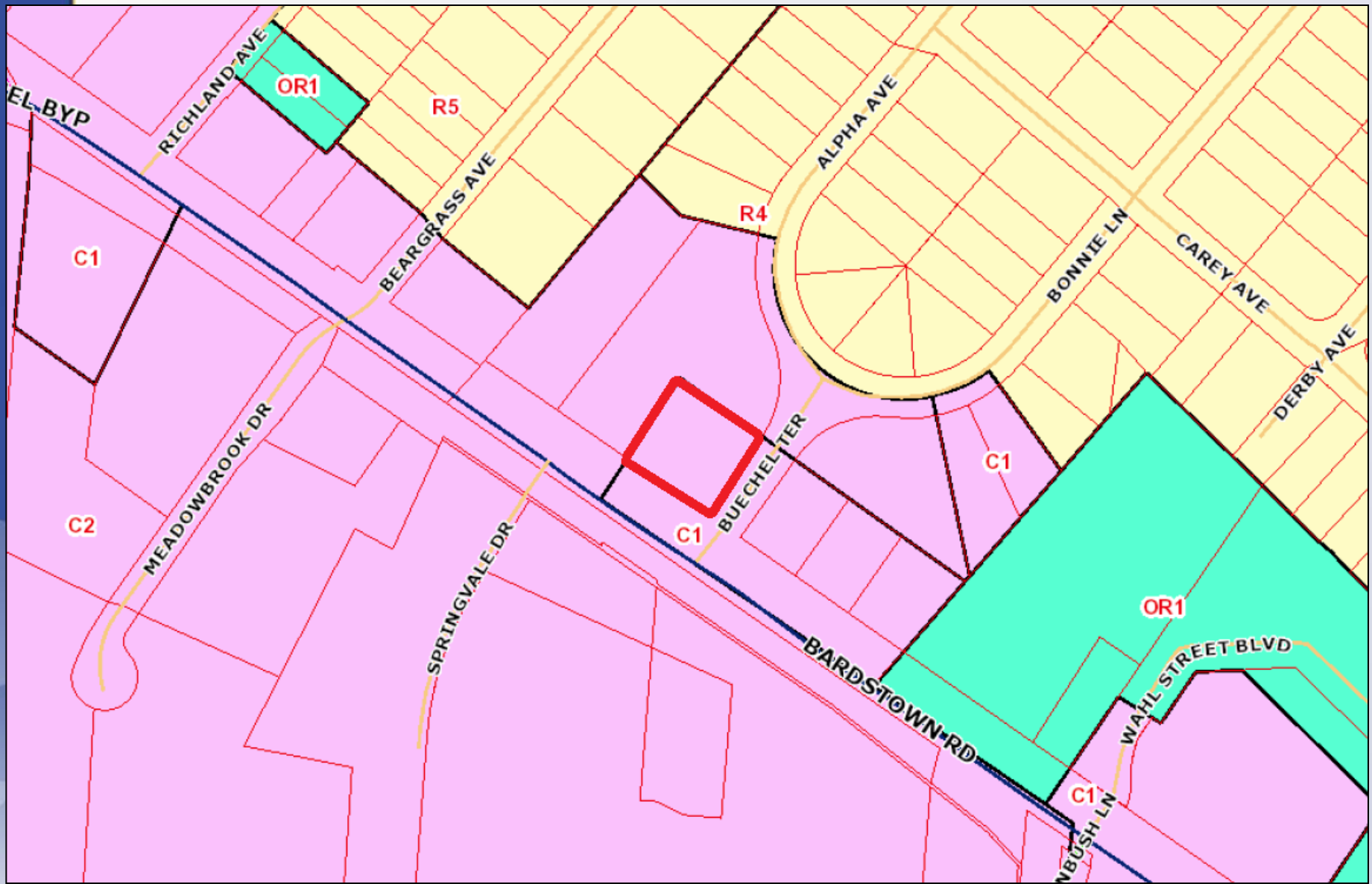
17ZONE1007

JPAT Investments



Planning/Zoning, Land Design & Development
October 3, 2017





Subject Property:

Existing: C-1/SMC

Proposed: C-2/SMC



Requests

- Change in Zoning from C-1 to C-2 on 0.49 acres
- Detailed District Development Plan

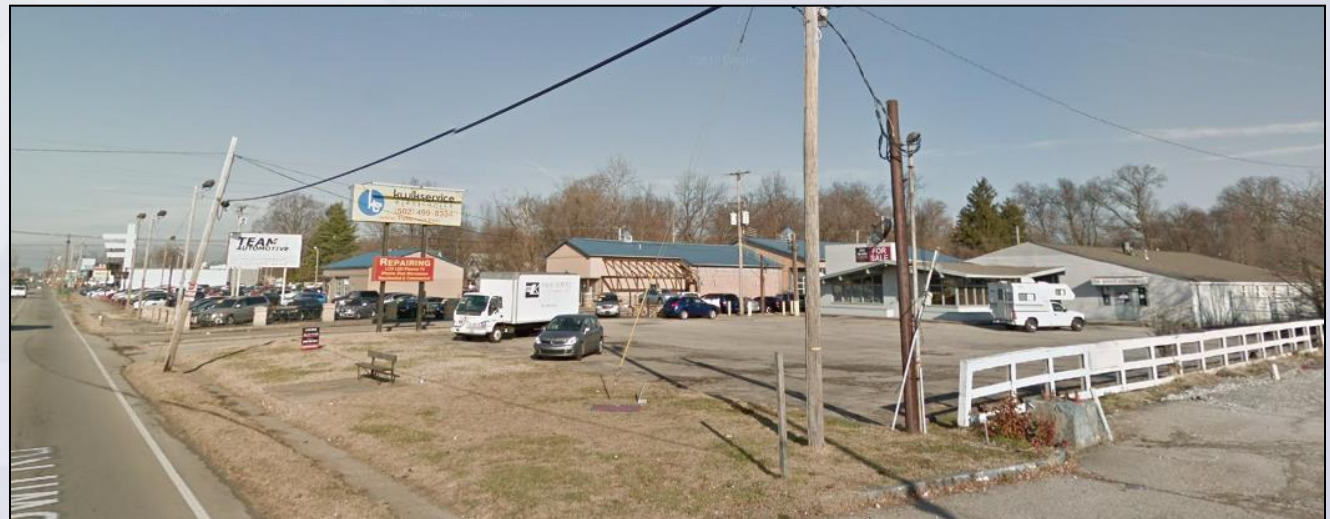
Case Summary

- Site located at intersection of Bardstown Road and Buechel Terrace
- Existing 2,500 square foot, 1-story building to be re-used for auto sales and rental
- Existing 650 square foot storage building
- 13 parking spaces
- Access and streetscape improvements along both frontages

Site Photos



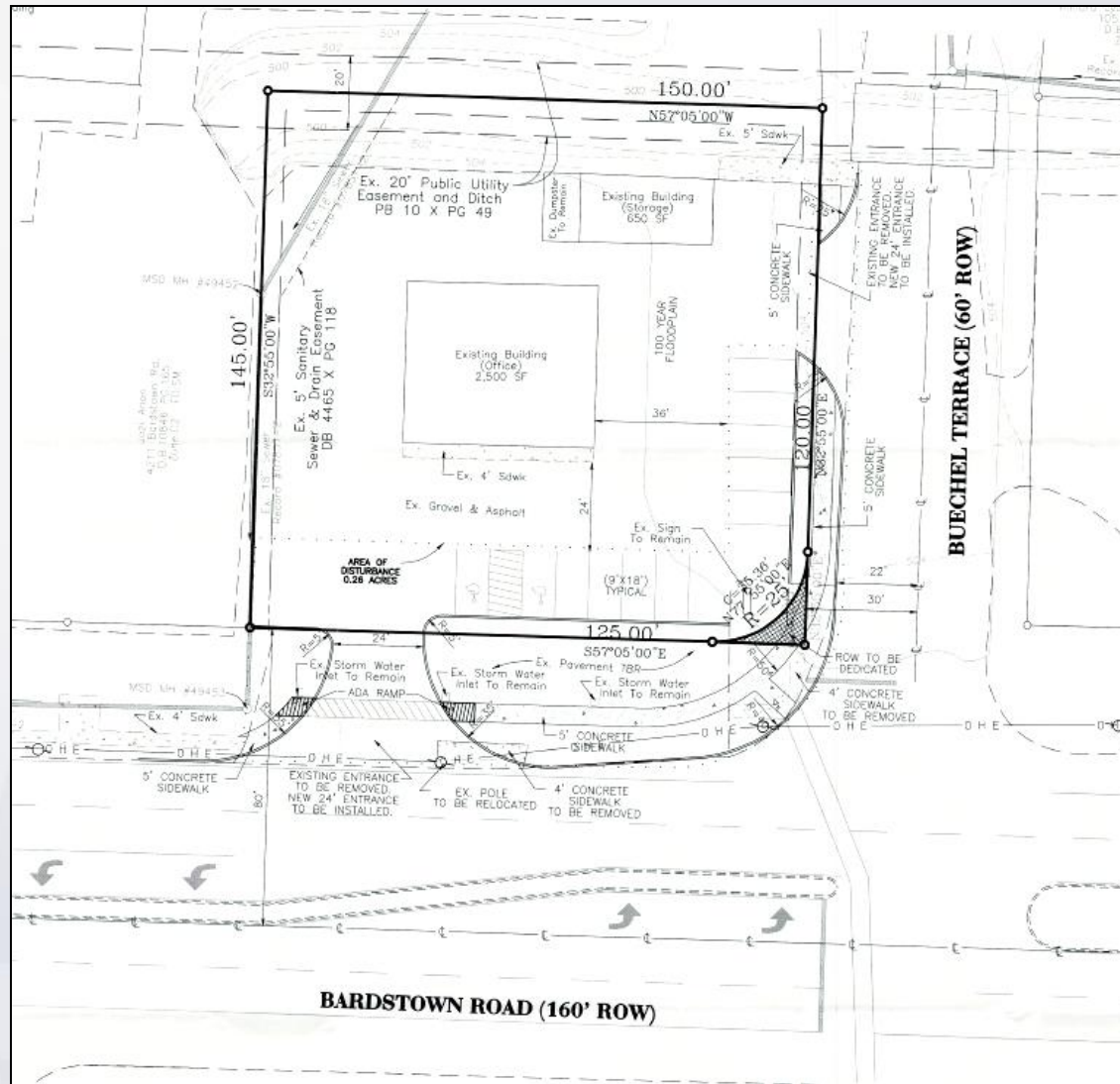
Site Photos-Surrounding



Site Photos-Surrounding



Development Plan



PC Recommendation

- The Planning Commission conducted a public hearing on 9/7/2017
- No one spoke in opposition.
- The Commission made sufficient findings that the proposal complies with the Comprehensive Plan-Cornerstone 2020
- The Commission recommended approval of the zoning map amendment from C-1 to C-2 by a vote of 7-0 (7 members voted)