



R2Architects, LLC

110 Kresson-Gibbsboro Road
Suite 8
Voorhees, New Jersey 08043
voice: 856 586 1515
fax: 856 586 0930
web: www.R2Architects.com

David J. Rudzenski, AIA
KY Registration No. 7601
Date:

PROJ.#: 16569.05

THESE DRAWINGS ARE BASED ON
AVAILABLE DOCUMENTS AND GENERAL FIELD
SURVEY OF THE BUILDING.

RELIANCE ON THESE DOCUMENTS IS LIMITED
TO THE GENERAL LAYOUT, DESIGN CONCEPT
AND SCOPE OF WORK.

CONTRACTOR(S) SUBMITTING BIDS MUST
CERTIFY, THROUGH PRIOR FIELD
INVESTIGATION AND SURVEY OF EXISTING
CONDITIONS AND DIMENSIONS, THAT HIS
BID INCLUDES ALL WORK REQUIRED AND
REFLECTS ACTUAL CONDITIONS OF THE
BUILDING.

ALL DIMENSIONS MUST BE VERIFIED BY
CONTRACTOR AND THE ARCHITECT
NOTIFIED OF ANY DISCREPANCIES BEFORE
PROCEEDING WITH THE CONSTRUCTION. DO
NOT SCALE DRAWINGS.
© R2ARCHITECTS, LLC

PROJECT TITLE

TRACKSIDE AT
CHURCHILL DOWNS

4520 POPLAR
LEVEL ROAD

LOUISVILLE
KENTUCKY 40213

DRAWING TITLE

EXTERIOR
ELEVATIONS

SCALE	AS NOTED	
DRAWN	HP / SC	
CHECKED	JPR	
APPROVED	DJR, JPR	
SUBMISSIONS / REVISIONS		
NO.	DATE	DESCRIPTION
	05/25/2017	SCHEMATIC DESIGN
	06/21/2017	DES. DEV. PROGRESS
	06/30/2017	DESIGN DEVELOPMENT
	08/31/2017	PERMIT/PRICING SET

A3.1

EXTERIOR ELEVATION NOTES:

NOTE: REFER TO STRUCTURAL, MEP AND FOOD SERVICE EQUIPMENT DRAWINGS
FOR ADDITIONAL INFORMATION.

TRESPA METEON PANEL SYSTEM, TS110 EXPOSED FASTENER SYSTEM ON ALUMINUM
SUBFRAME; PROVIDE UV STABLE BLACK WEATHER BARRIER UNDER AT ALL PANEL
LOCATIONS, TYP.; 10MM THICKNESS, MOOD DECORS LINE, SATIN FINISH,
COLOR TBD.

TRESPA METEON PANEL SYSTEM, TS110 EXPOSED FASTENER SYSTEM ON ALUMINUM
SUBFRAME; PROVIDE UV STABLE BLACK WEATHER BARRIER UNDER AT ALL PANEL
LOCATIONS, TYP.; 10MM THICKNESS, LUMEN LINE COLOR CODE LM0641 CHINA
GOLD IV OBLIQUE FINISH

FABRAL HEFTI-RID EXPOSED FASTENER CORRUGATED METAL PANEL SYSTEM;
INSTALLED HORIZONTALLY; 1.2" RIB SPACING; COLOR TBD.

2" EIFS; COLOR / FINISH TBD.

BRICK WATER TABLE; HEDRON "BOURDON STREET" WHOLE BRICK OR EQUAL;
PROVIDE BRICK SLOPED SILL; HEIGHT VARIES SEE BUILDING SECTIONS.

ALUMINUM STOREFRONT GLAZING SYSTEM; GLASS TO BE AS FOLLOWS:
• REFLECTIVE VIRACON 1" VUES 30 INSULATING GLASS UNIT (GRAY HS
VUE-30 #2) - OR EQUAL
• OPAQUE SPANDREL GLASS; COLOR TBD.

CURTAIN WALL CORNER GLAZING SYSTEM; GLASS TO BE AS FOLLOWS:
• REFLECTIVE VIRACON 1" VUES 30 INSULATING GLASS UNIT (GRAY HS
VUE-30 #2) - OR EQUAL
• OPAQUE SPANDREL GLASS; COLOR TBD.

BRUSHED METAL CANOPY

KINDON IV REFLECTIVE GLAZING; SEE KINDON SCHEDULE

DOOR (TYP. MAIN DOOR); SEE DOOR SCHEDULE

DOOR (TYP. OVERHEAD GARAGE DOOR); SEE DOOR SCHEDULE

METAL CANOPY OVER EMPLOYEE ENTRANCE / LOADING DOCK

CONCRETE LOADING DOCK; SEE CIVIL & STRUCTURAL DRAWINGS FOR ADDITIONAL
INFORMATION

RAILING / FALL PROTECTION AT LOADING DOCK, TYP.

ROOF ACCESS LADDER AND CASE.

ALUMINUM COPING; COLOR / FINISH TBD.

SCUPPER AND DOWNSPOUT TO GRADE; COORDINATE LOCATIONS IV/ ROOF PLAN AND
MEP DRAWINGS.

RTU (SEE MEP DRAWINGS)
• RTUS AT HIGH ROOF TO BE SURROUNDED BY LOUVERED PANEL RTU EQUIPMENT
SCREEN ON (3) SIDES, TYP.
• RTUS AT LOW ROOF HAVE NO SCREENING

PORTE COCHERE IV/ BRICK WATER TABLE, WOOD VENEER COLUMNS, BRUSHED
METAL CANOPY AND ALUMINUM COPING.

ADVERTISING / SIGNAGE LIGHT BOX

EXTERIOR ELEVATION KEY:

REFLECTIVE GLASS

SPANDREL GLASS

CORRUGATED METAL
SIDING PANELS

EIFS

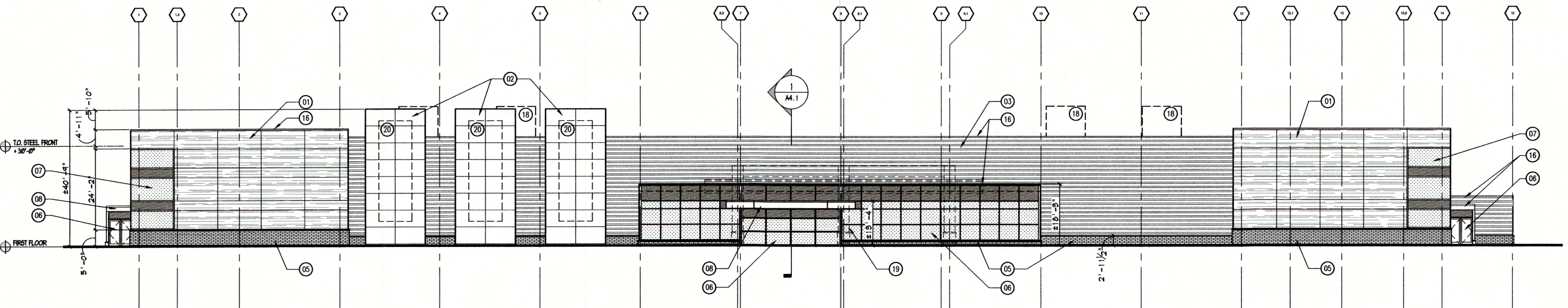
BRICK

TRESPA METEON
PANEL SYSTEM -
EXTERIOR MOOD
DECOR LINE

RECEIVED

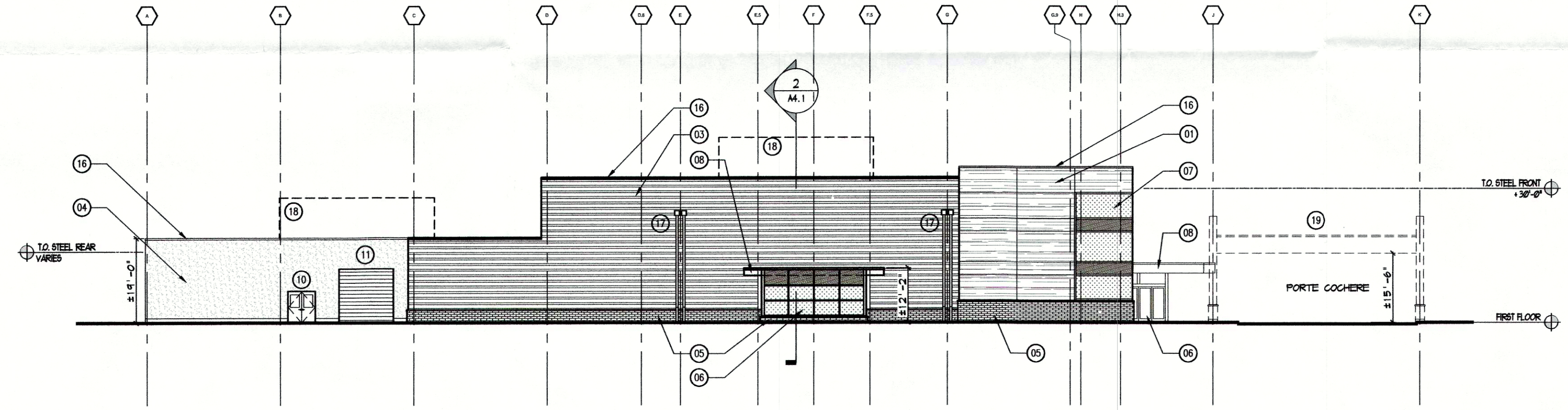
AUG 28 2017

PLANNING
DESIGN SERVICES



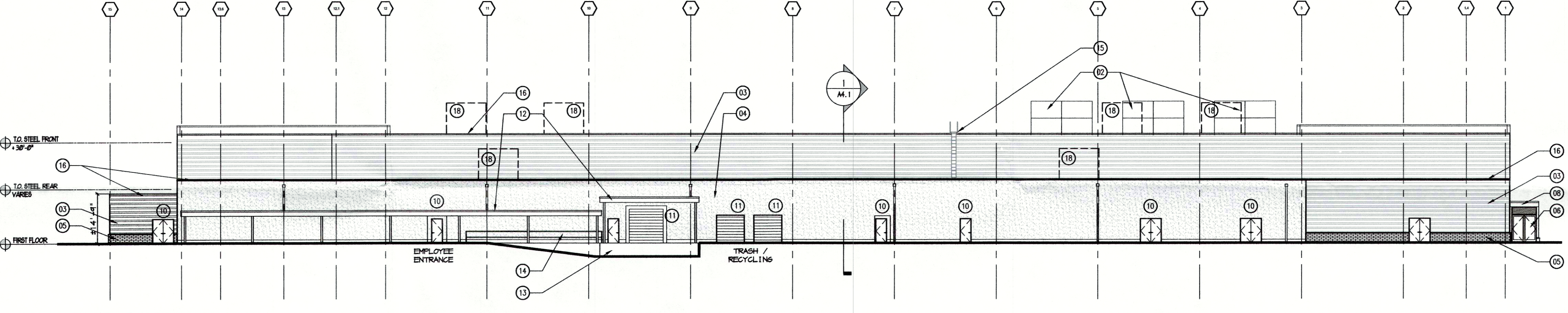
1 NORTH ELEVATION

1/16" = 1'-0"



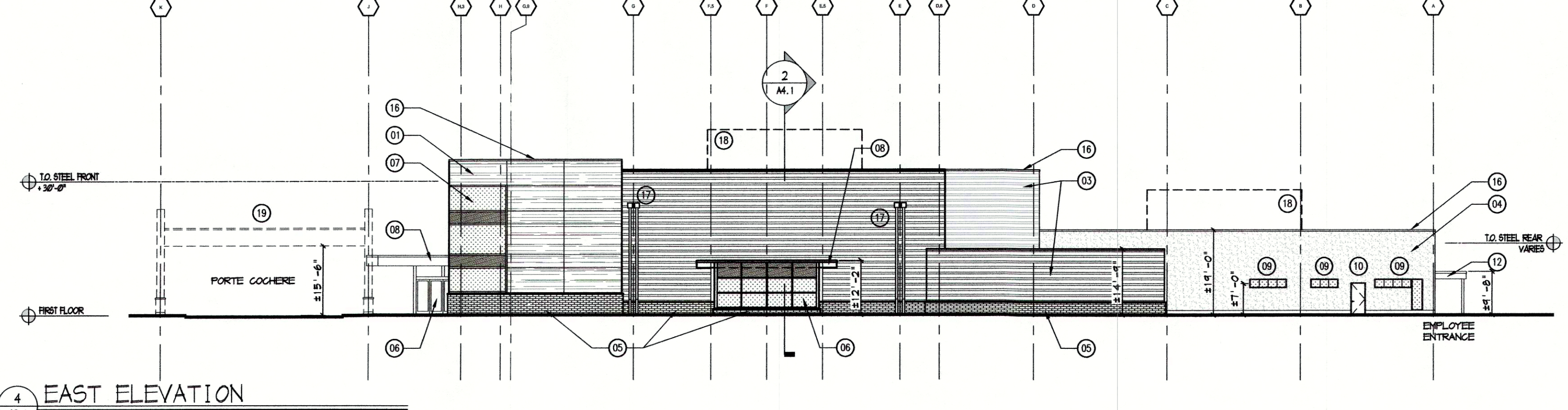
2 WEST ELEVATION

1/16" = 1'-0"



3 SOUTH ELEVATION

1/16" = 1'-0"



4 EAST ELEVATION

1/16" = 1'-0"

LAST SAVE: mpsave1 PLOTTED BY: mpsave1
DATE: 08/27/2017 12:54 PM
DWG NAME: A3.1 Trackside at Churchill Downs (6565) Trackside (6565-02) (6565) - A3.1 - Exterior Elevations.dwg LAYOUT: A3.1