

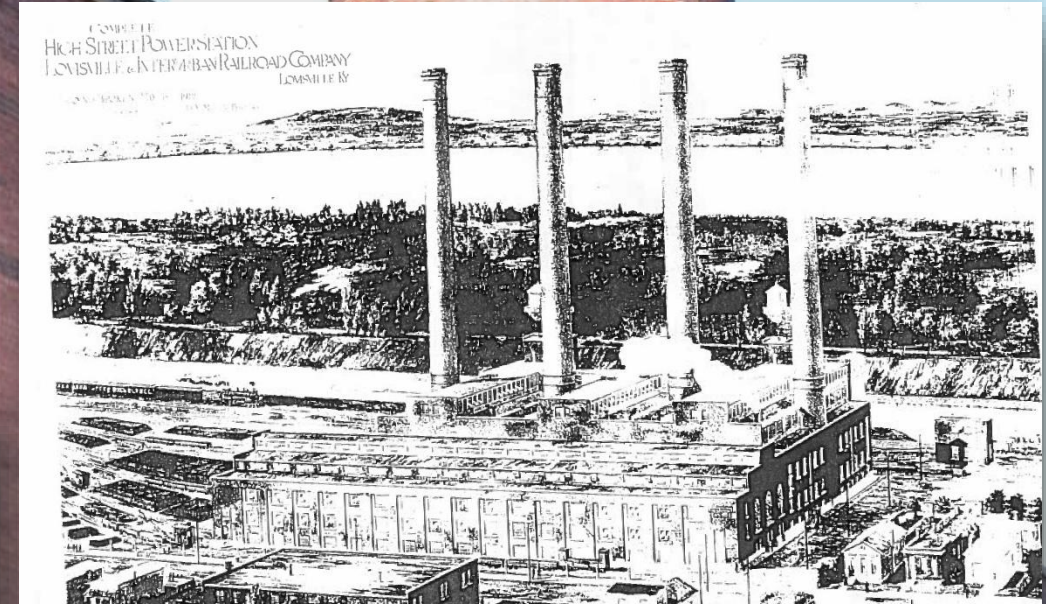
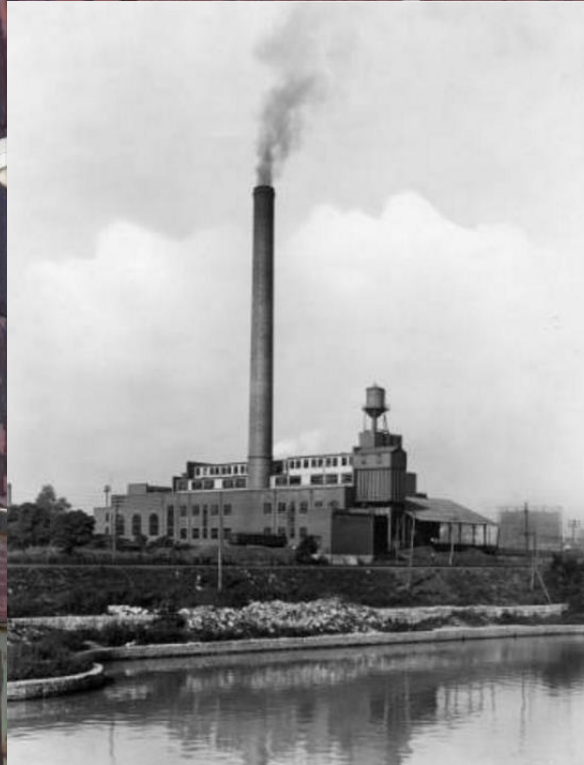
High Street Power Station



2005 Northwestern Parkway (High Street), Louisville, KY

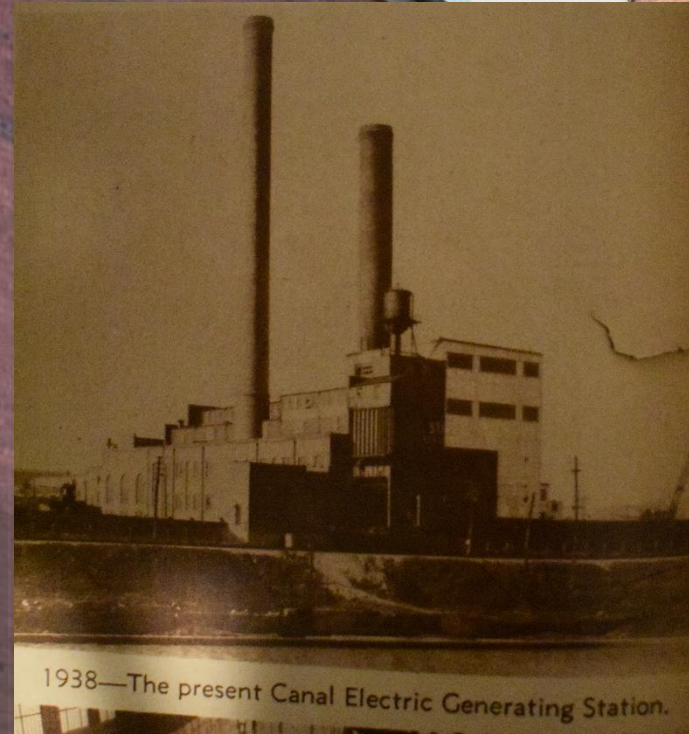
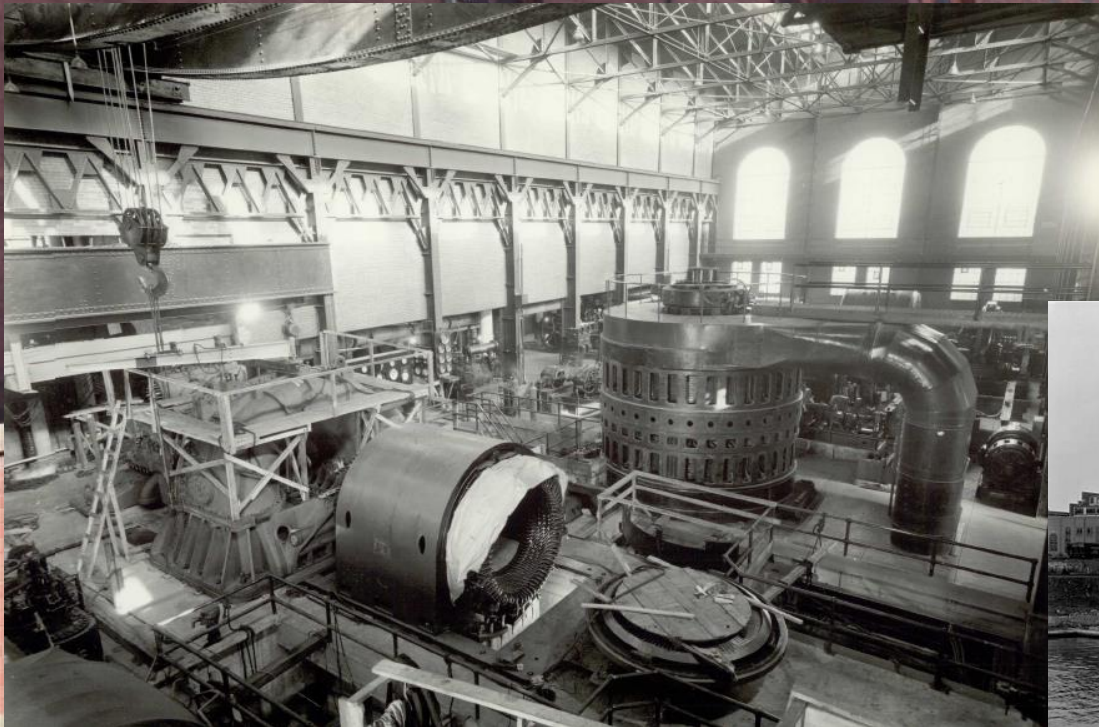
Louisville Railway Company

- First horse drawn street cars - 1864
- First electric streetcars - 1889
- High Street 3rd and last power station (1912)
- Elevated rapid transit 2 yrs. prior to Chicago's "L"
- Last streetcar - 1948

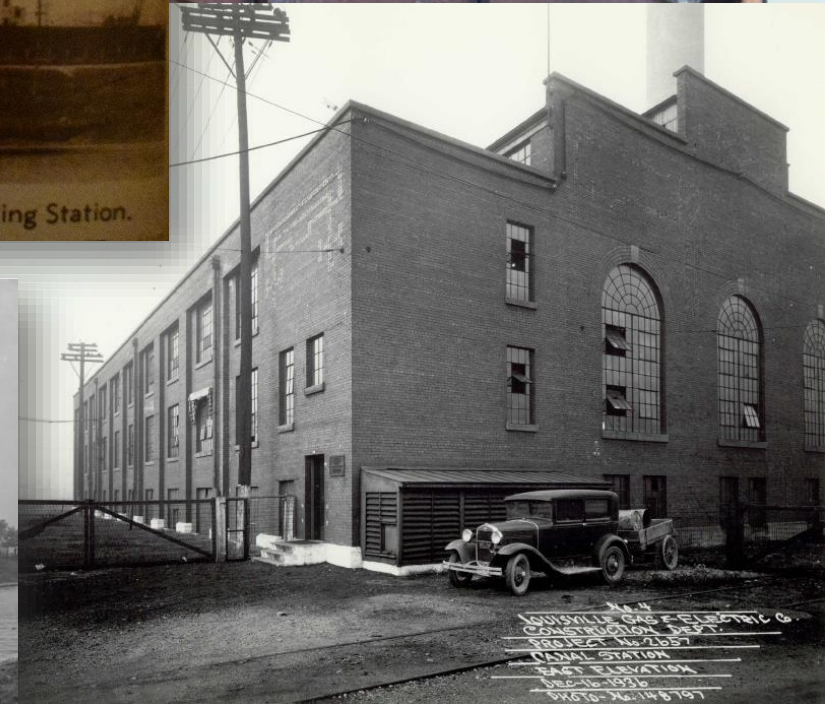


Louisville Gas & Electric

- Purchased in 1930
- Became LG&E's "Canal Station"
- First ever anti-pollution device
- Company's first pulverized coal boiler
- Retired 1966



1938—The present Canal Electric Generating Station.



Power Station Station Today

- Remains almost completely intact
- Contains historic generation equipment
- Features distinct architectural features

