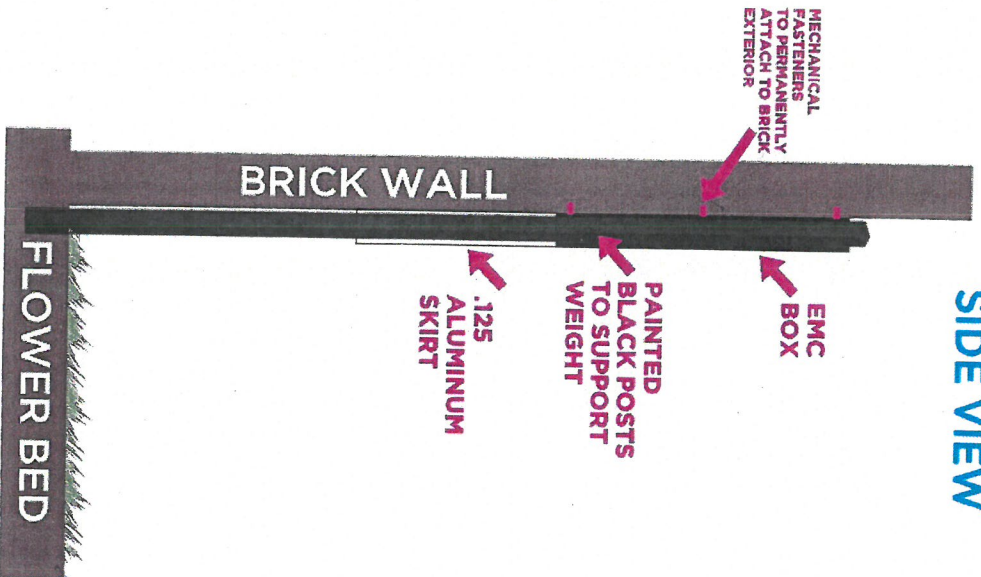




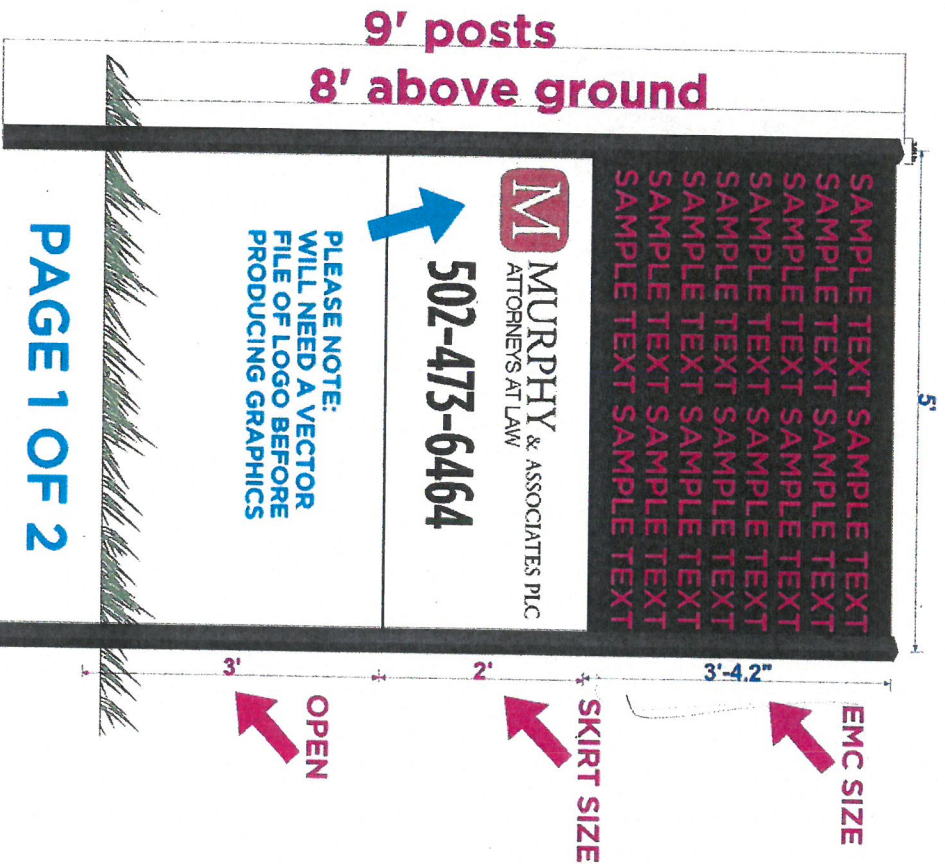
**Signarama**  
D O W N T O W N

502.585.4099 | Fax 502.585.9905 | www.signaramadowntown.com  
909 E. Market St., Ste. 400, Louisville, KY 40206

## SIDE VIEW



## FLAT VIEW TO SHOW DIMENSIONS



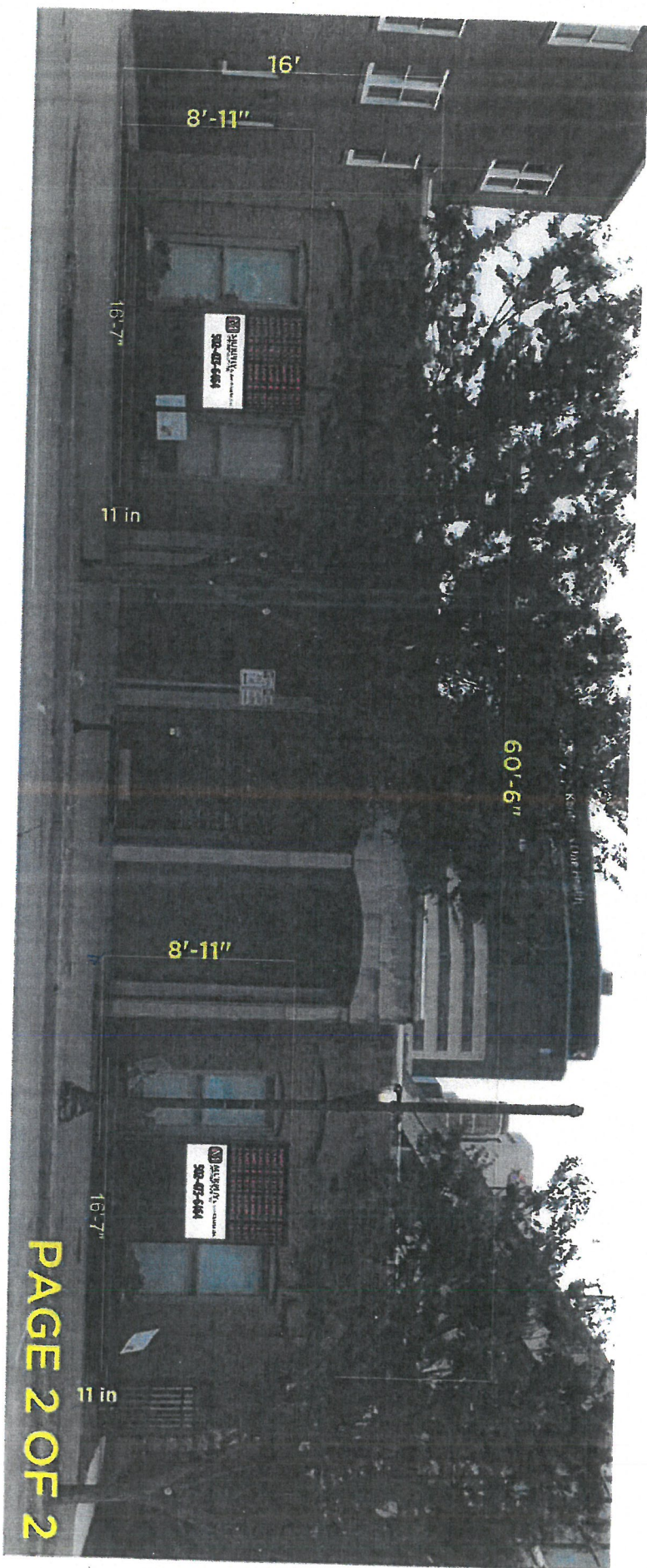
### Job Details

Steel EMC (2) see dimensions as shown  
2 black posts 3"x3"x3"x9'  
.125 aluminum skirt w/RTA black vinyl  
Viewable Area 3'-4.2" x 5'  
Model: Xcellence V1-16 64x96-1RIGIB  
Sign Pitch: 16mm  
Max Power: 1044 w  
Max Current: 8.7a @120v  
Brightness: 11,000 NIT  
Weight: 291 Lbs  
Color: Full Color  
QTY: 2 EMCs, 4 9' posts, 2 skirts  
Install  
EMC Attached to Building with Mechanical Fasteners  
Weight Supported by Posts.



**Signarama**  
DOWNTOWN

502.585.4099 | Fax 502.585.9905 | [www.signaramadowntown.com](http://www.signaramadowntown.com)  
909 E. Market St., Ste. 400, Louisville, KY 40206



PAGE 2 OF 2

OR# 45250 - Murphy and Associates  
Sales Rep: EKS  
Design File: emc\_PERMIT\_03.fs