

Louisville Metro Planning Commission Public Hearing – January 18, 2018

Land Development & Transportation Committee – December 14, 2017

2<sup>nd</sup> Neighborhood Meeting – November 29, 2016

Neighborhood Meeting - May 24, 2016

## Docket No. 16ZONE1031

Zone change from R-4 to C-1 for an adjacent parcel in order to replace the existing C-1 zoned gas and convenience store with a new larger store on property located at 12411 and 12415 Taylorsville Road

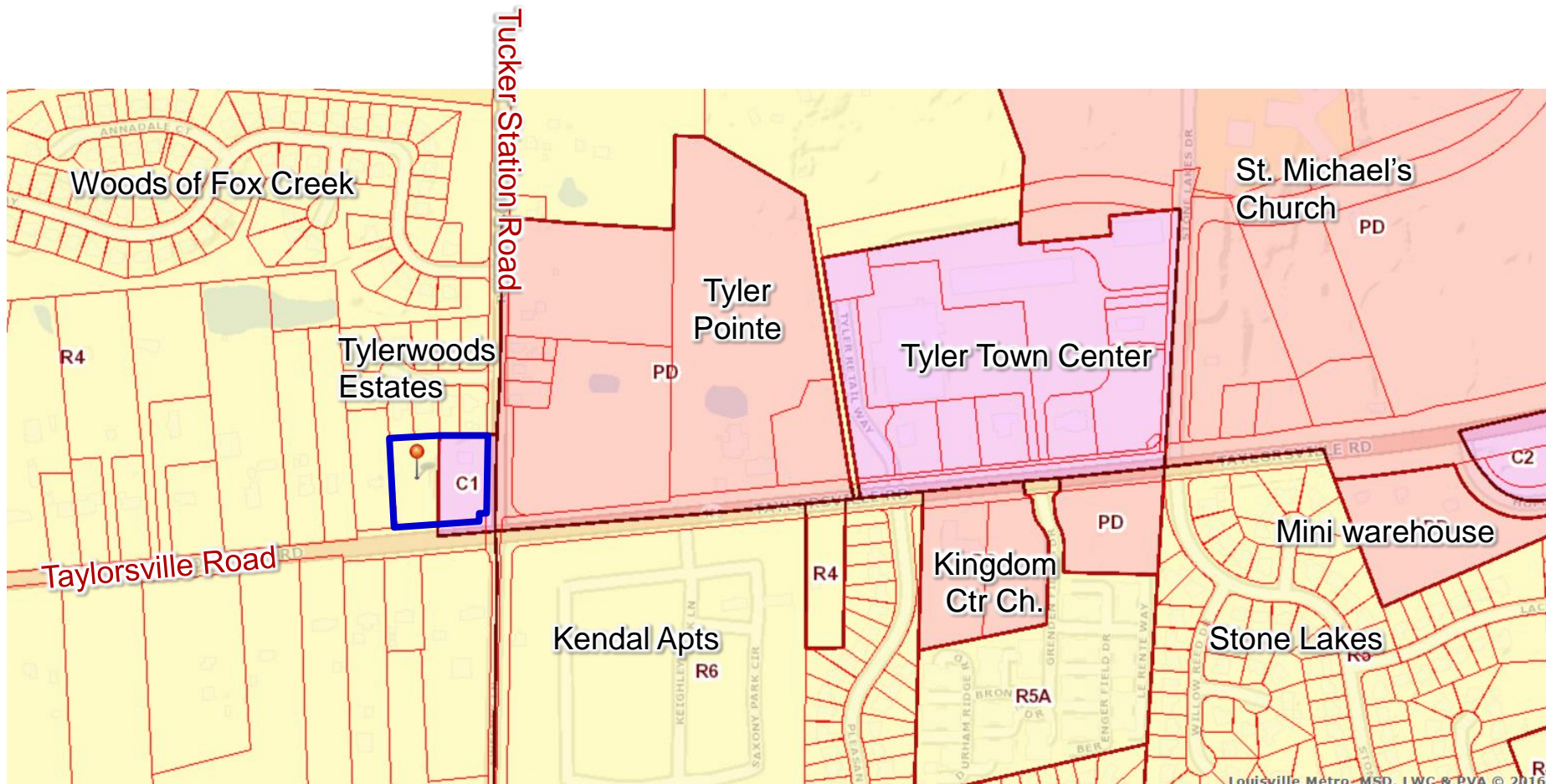


Attorneys: Bardenwerper Talbott & Roberts, PLLC

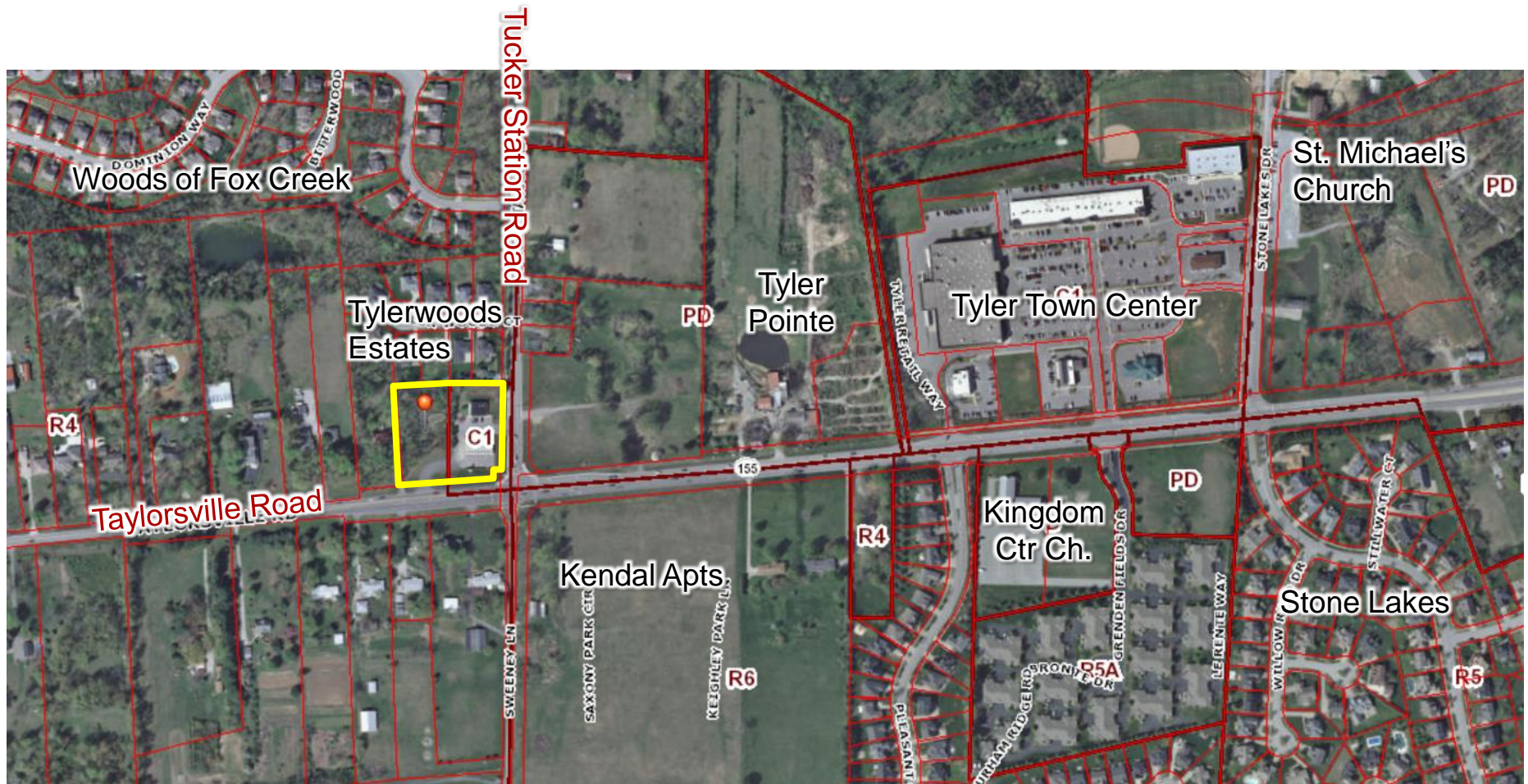
Land Planners, Landscape Architects & Engineers: Classickle Engineering &

BlueStone Engineers, PLLC

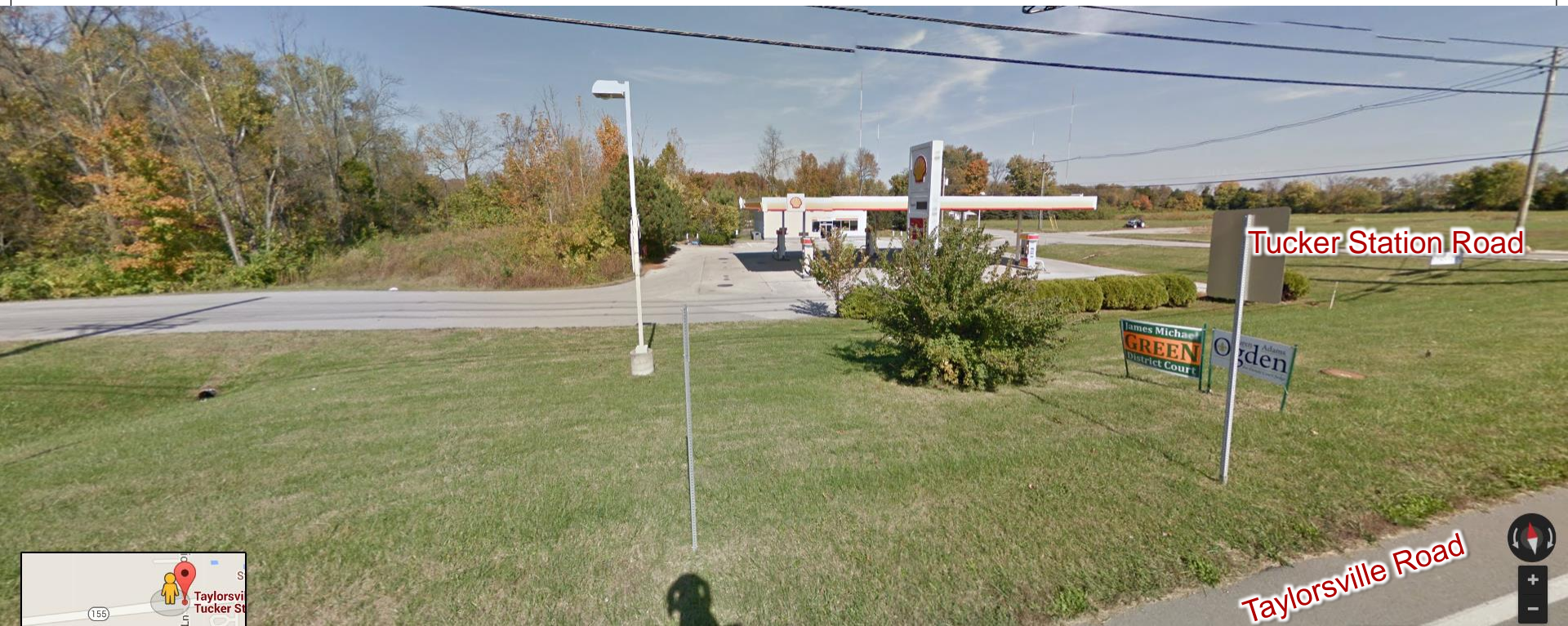
Architect: Architectural Investments











View looking north from Taylorsville Road.





Taylorsville Road

View looking north from Taylorsville Road.

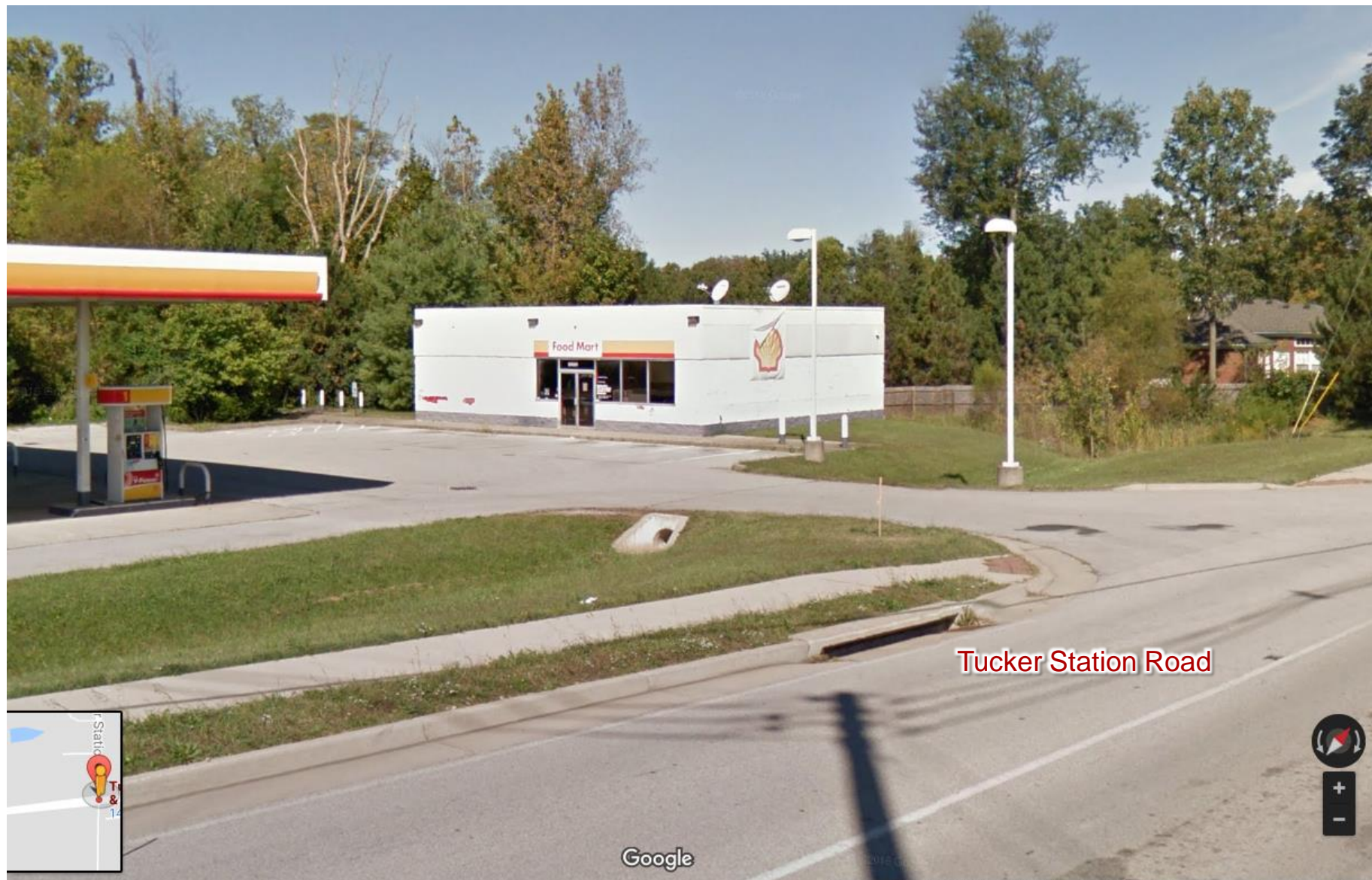


View looking north from intersection of Taylorsville and Tucker Station Roads.





View looking north from intersection of Taylorsville and Tucker Station Roads.



View looking northwest from Tucker Station Road.





View looking west from Tucker Station Road.

CIRCLE K - 12411 + 12415 TAYLORSVILLE RD





BARDENWERPER, TALBOTT & ROBERTS, PLLC

ATTORNEYS AT LAW

1000 N. HURSTBOURNE PARKWAY • BUILDING INDUSTRY ASSOCIATION OF GREATER LOUISVILLE BLDG. • SECOND FLOOR • LOUISVILLE, KENTUCKY 40223  
(502) 426-6688 • (502) 425-0561 (FAX) • WWW.BARDLAW.NET

William B. Bardenwerper  
Direct dial: 426-0388, ext. 125  
Email: WBB@BARDLAW.NET

May 11, 2016

Dear Neighbor,

**RE: Proposed change in zoning from R-4 to C-1 on 1.04 +/- acres on a total of 2.09 +/- acre site, 1.05 +/- acres of which are already zoned C-1, including a Revised Detailed District Development Plan ("RDDDP") and Detailed District Development Plan ("DDDP") for a Circle K gas and convenience store, located at the northwest quadrant of the Taylorsville and Tucker Station Roads intersection at 12411 & 12415 Taylorsville Rd.**

We are writing to invite you to a meeting we have scheduled to present neighbors with our rezoning and revised detailed district development plan to allow a new Circle K gas and convenience store at this site. The new Circle K will be a larger facility which will better assist Circle K in providing customers' needs and wants in this high growth area. This 50% larger site will assure a more successful business.

Accordingly, we will file a plan for pre-application review on Monday, May 16<sup>th</sup> with the Division of Planning and Design Services (DPDS) that we would like to show and explain to neighbors so that we might hear what thoughts, issues and perhaps even concerns you may have.

Once the pre-application plan is filed, a case number and case manager will be assigned, and we will let you know what and who that is at the meeting. In that regard, a meeting will be held on **Wednesday, May 25<sup>th</sup> at 7:00 p.m.** at the **St. Michael School, in the cafeteria (a/k/a Griner Center)** located at **3703 Stone Lakes Drive**.

If you cannot attend the meeting but have questions or concerns, please call either of us at 426-6688.

We look forward to seeing you.

Sincerely,



William B. Bardenwerper  
Nicholas R. Pregliasco

Cc: Hon. Kevin Kramer, Councilman, District 11  
Hon. Stuart Benson, Councilman, District 10  
Tucker Station Neighborhood Association, c/o Steve Porter and David Kaelin  
Gregg Guy, Real Estate Manager, Circle K  
Brian Davis, supervisor with Division of Planning & Design Services  
Anthony Sickles, land planners with Classickle Engineering

BARDENWERPER, TALBOTT & ROBERTS, PLLC

ATTORNEYS AT LAW

1000 N. HURSTBOURNE PARKWAY • BUILDING INDUSTRY ASSOCIATION OF GREATER LOUISVILLE BLDG. • SECOND FLOOR • LOUISVILLE, KENTUCKY 40223  
(502) 426-6688 • (502) 425-0561 (FAX) • WWW.BARDLAW.NET

Nicholas R. Pregliasco  
Direct dial: 426-0388, ext. 139  
Email: NRP@BARDLAW.NET

November 14, 2016

Dear Neighbor,

**RE: Follow-up meeting regarding the proposed change in zoning from R-4 to C-1 on 1.04 +/- acres on a total of 2.09 +/- acre site, 1.05 +/- acres of which are already zoned C-1, including a Revised Detailed District Development Plan ("RDDDP") and Detailed District Development Plan ("DDDP") for a Circle K gas and convenience store, located at the northwest quadrant of the Taylorsville and Tucker Station Roads intersection at 12411 & 12415 Taylorsville Rd. (Case No. 16ZONE1031, Julia Williams – Case Manager)**

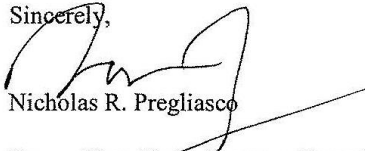
We are writing to invite you to a follow-up meeting to the one we held on May 25, 2016 to again present neighbors with our rezoning and revised detailed district development plan to allow a new Circle K gas and convenience store at this site. The new Circle K will be a larger facility which will better assist Circle K in providing customers' needs and wants in this high growth area. This 50% larger site will assure a more successful business.

Accordingly, this follow-up meeting will be held on **Tuesday, November 29<sup>th</sup> at 7:00 p.m. at the St. Michael School, in the cafeteria (a/k/a Griner Center) located at 3703 Stone Lakes Drive.**

If you cannot attend the meeting but have questions or concerns, please call either of me at 426-6688.

We look forward to seeing you.

Sincerely,



Nicholas R. Pregliasco

Cc: Hon. Kevin Kramer, Councilman, District 11  
Hon. Stuart Benson, Councilman, District 20  
Tucker Station Neighborhood Association, c/o Steve Porter and David Kaelin  
Gregg Guy, Real Estate Manager, Circle K  
Julia Williams, case manager with Division of Planning & Design Services  
Anthony Sickles, land planners with Classickle Engineering

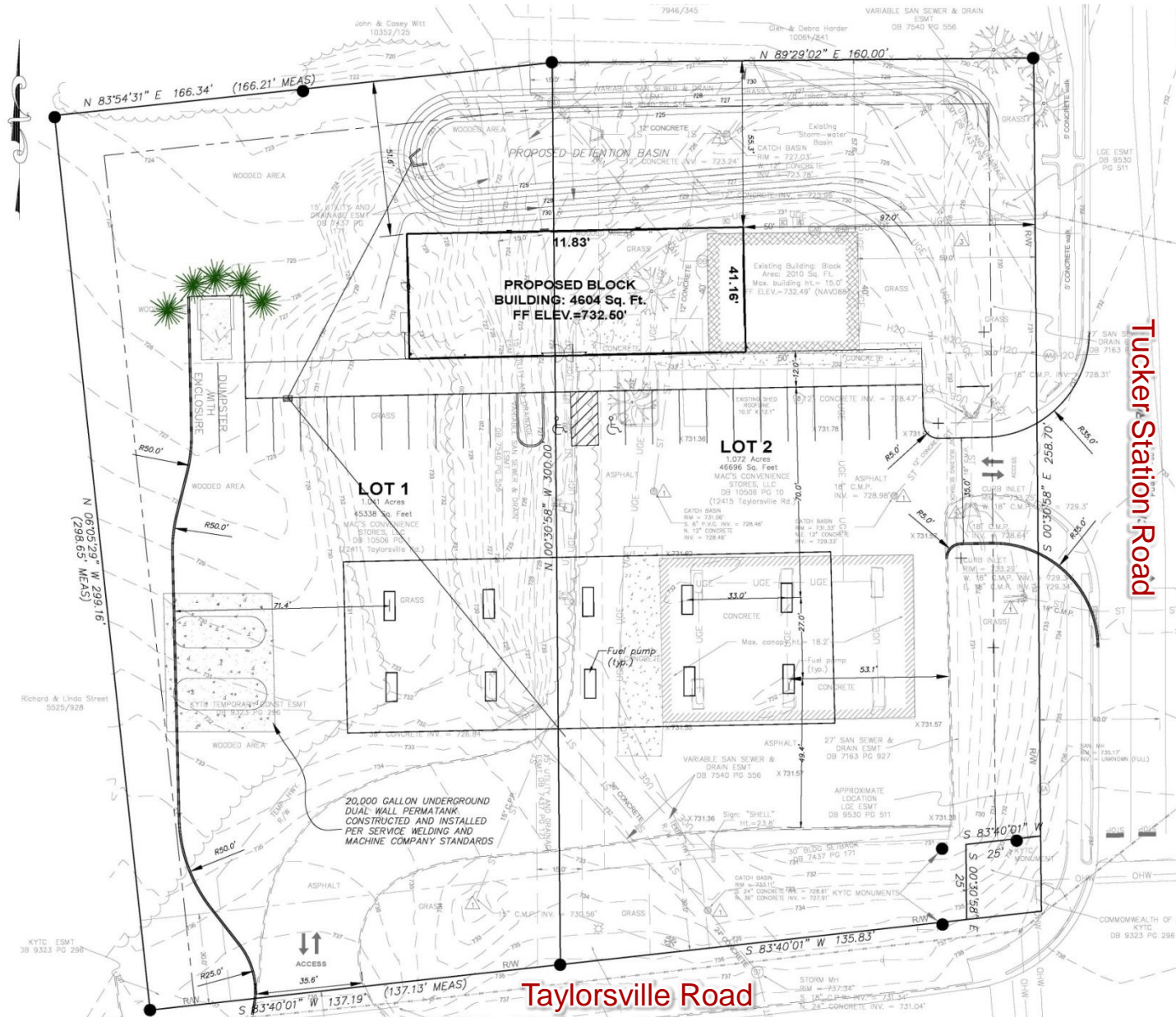


## Neighborhood Meeting Summary

A neighborhood meeting was held on Wednesday, May 25, 2016 and Tuesday, November 29, 2016 at 7:00 p.m. at the St. Michael School located at 3703 Stone Lakes Drive.

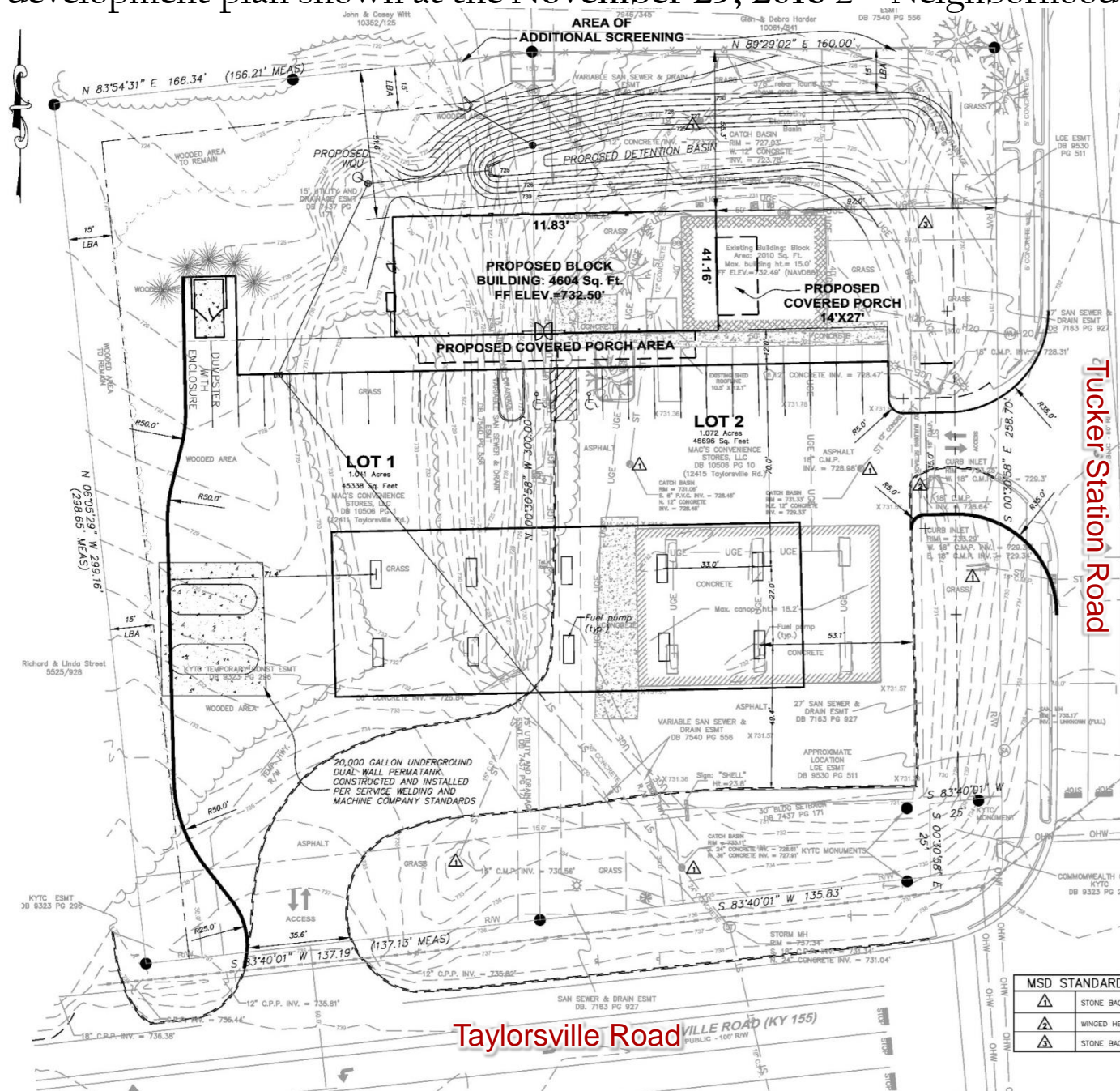
Those in attendance included the applicant's representatives, Nick Pregliasco, attorney and Chris Crumpton, land planner and engineer with Bluestone Engineers, as well as the applicant. At the first neighborhood meeting, Nick Pregliasco presented a powerpoint presentation as to the site, the existing Circle K gas station that has been in existing for some time, and the proposed new Circle K gas station which is larger and will also include the adjoining residential property to the West, with the current gas station site already properly zoned. Nick Pregliasco showed the new proposed Development Plan and answered questions along with Chris Crumpton as to same, including traffic, the buffering along the properties to the North, the detention basin proposed and the drainage. The two existing curb cuts are proposed to remain. Chris answered questions as to the technical questions on the drainage, tree canopy, and setbacks. At the meeting, questions were asked as to the Tyler Rural Settlement District Neighborhood Plan. Due to the concerns raised on the style and design at this meeting, the Applicant and its representatives met with Steve Porter and representatives of the Tyler Neighborhood Association to discuss proposed changes to the building layout and the style and design of the gas station. After the meeting, Nick Pregliasco continued to work with Mr. Porter and representatives of the Neighborhood Association on new elevations and renderings with new ones sent over for review. Afterward, due to the changes both to the Development Plan and the style and design of the gas station, another neighborhood meeting was scheduled and conducted on November 29, 2016 to show the new Development Plan and the new proposed elevations to explain the changes made, along with Applicant's architect Kevin Burns. A new powerpoint was presented, showing the full proposal for those not in attendance at the first neighborhood meeting and then showing in detail all of the changes made from the first meeting. Kevin explained all the changes to the building, the proposed sign, and the proposed gas canopy and took questions as to the changes made and the ones that couldn't be made for various reasons. Neighbors to the North expressed concerns as to the screening and buffering and those were discussed as to what was requested. Concerns over potential crime were discussed with the new apartment project across Taylorsville Road. Questions as to the outdoor storage area were discussed along with possibly proposed change to the porch area on the East side of the property to make this storage instead of a porch (which was added based upon the Tyler Rural Settlement Plan). This idea would allow the style and design of showing a porch but not leave it as an area for loitering. Neighbors also discussed the idea of not having the building centered on the parking and gas station tanks. At the meeting, Chris answered questions as to trees on the site and those that would remain.

# Previous development plan shown at the May 24, 2016 Neighborhood Meeting





# Previous development plan shown at the November 29, 2016 2<sup>nd</sup> Neighborhood Meeting



Taylorsville Road

Tucker Station Road

MSD STANDARD	
	STONE BAG
	WINGED HEEL
	STONE BAG

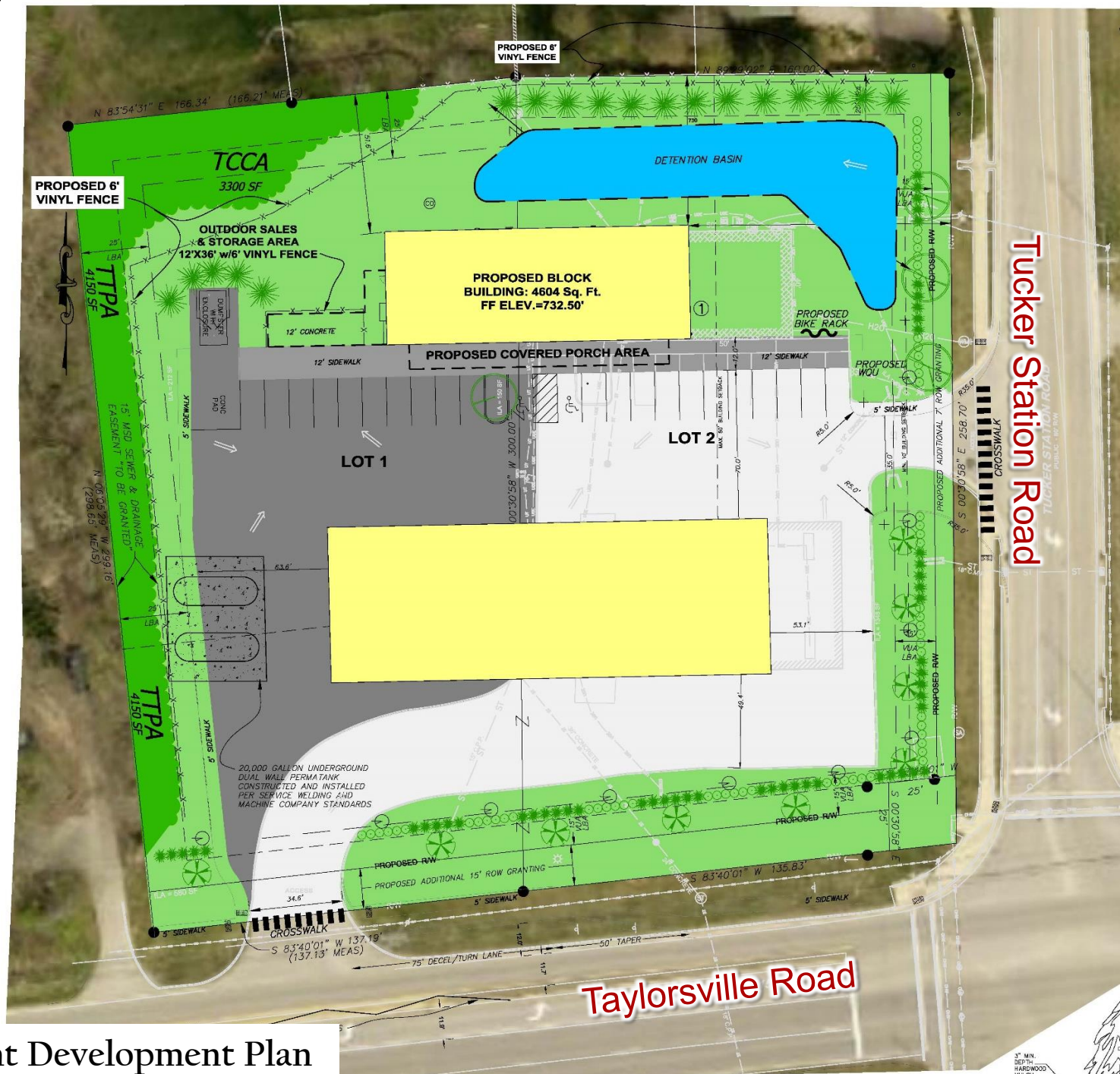




Tucker Station Road

Taylorsville Road





Current Development Plan

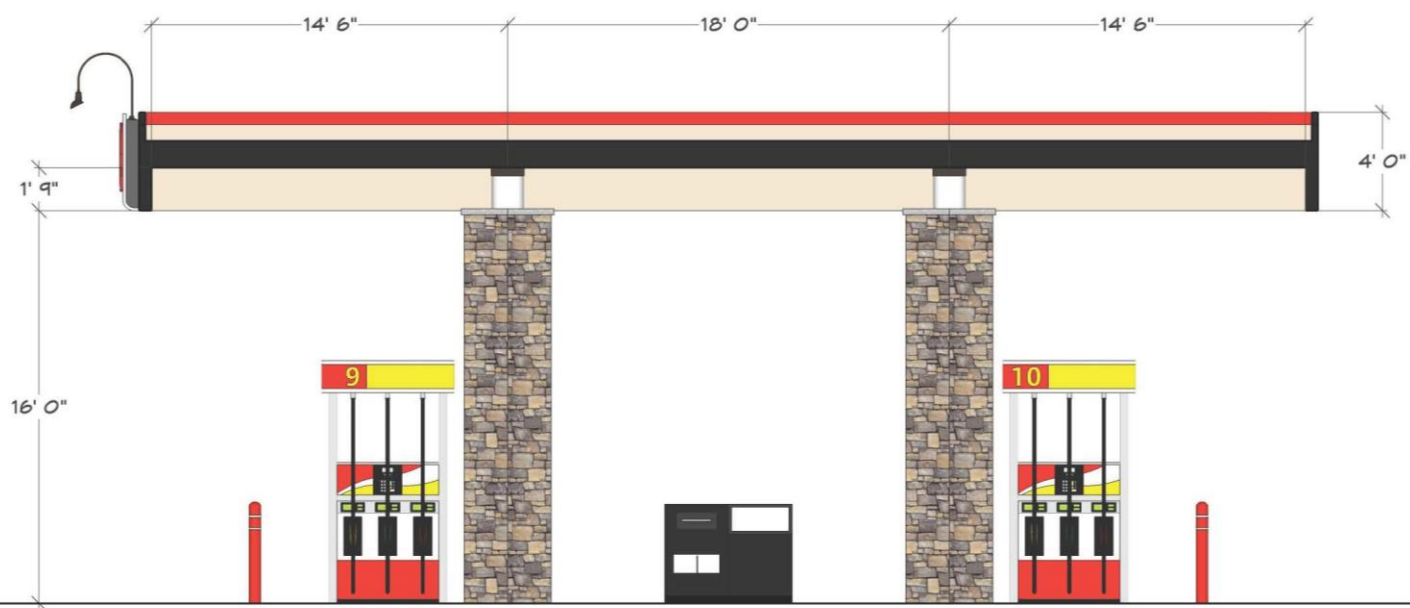


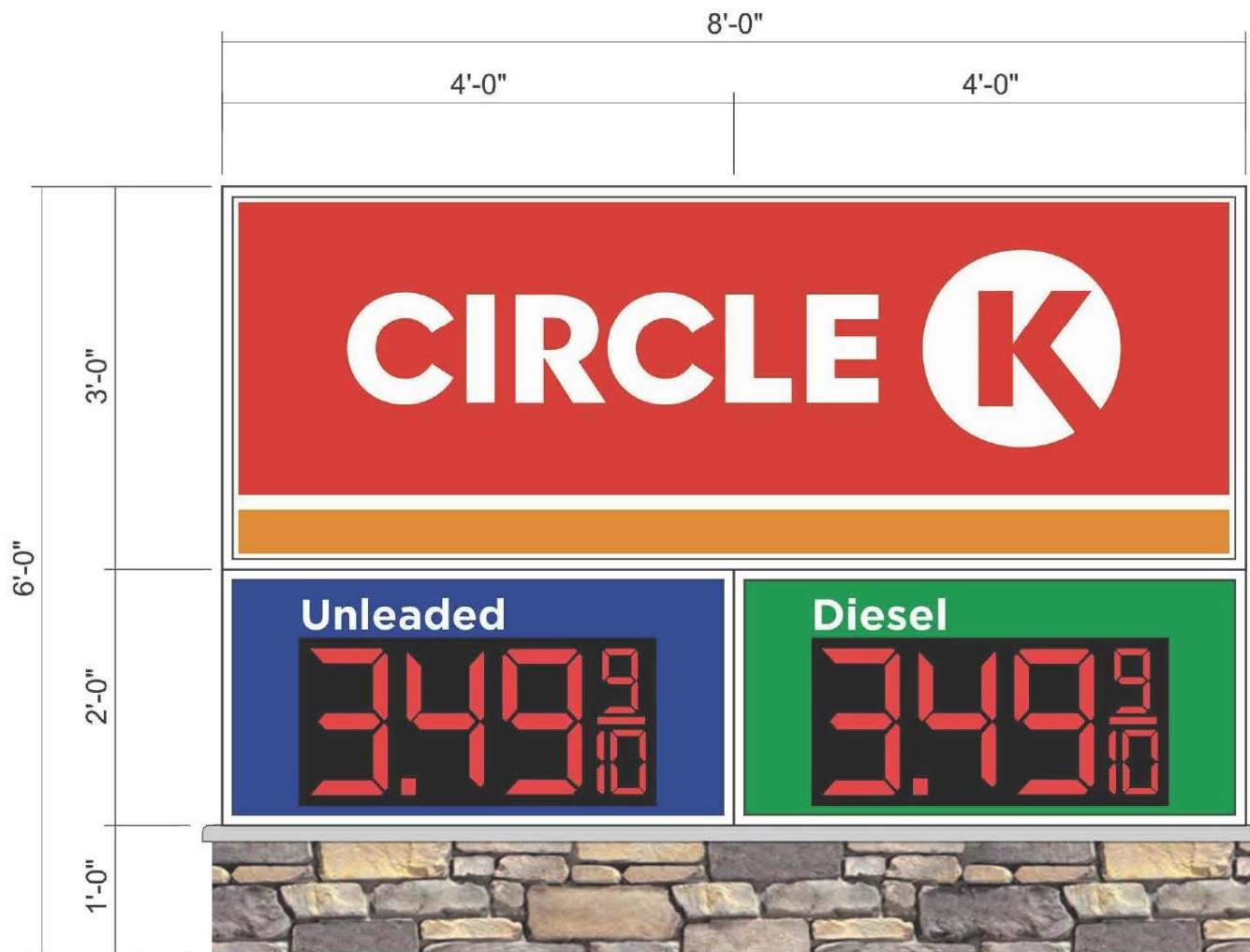










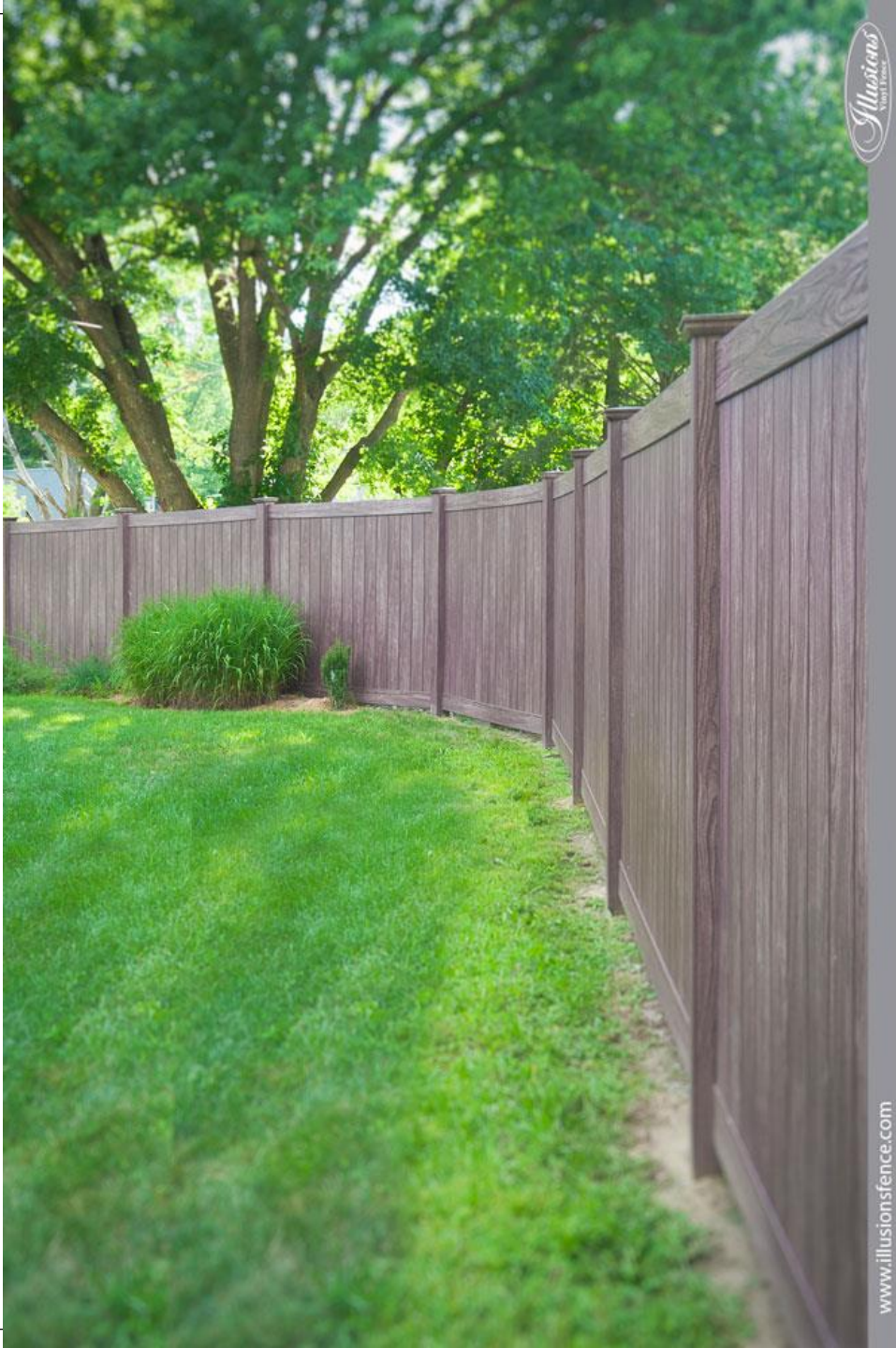


14" LED Digits





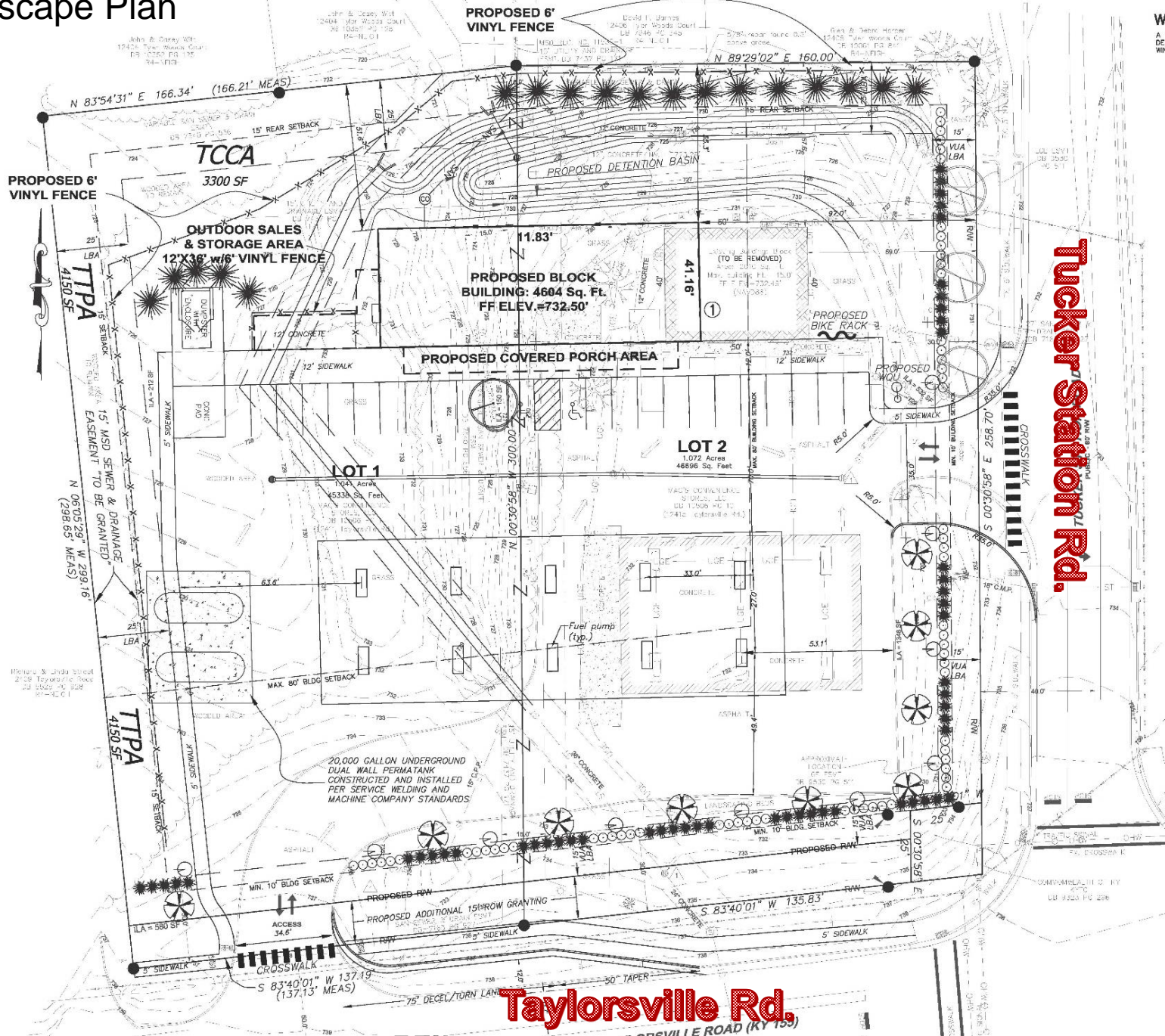









[www.illusionsfence.com](http://www.illusionsfence.com)



# Landscape Plan



## PLANT LEGEND

QTY	NOTE	KEY	BOTANICAL NAME	COMMON NAME	SIZE	TREE TYPE	SPACING
3	RM		<i>Acer rubrum</i> 'October Glory'	OCTOBER GLORY RED MAPLE	1 3/4" Cal.	A	AS SHOWN OR 30' O.C.
1	WO		<i>Quercus phellos</i>	WILLOW OAK	1 3/4" Cal.	A	AS SHOWN OR 30' O.C.
53	JU		<i>Juniperus chinensis</i> 'Nick's compacta'	NICK'S COMPACT JUNIPER	18" Ht. (Min.) (2 Gal. Container)		4.0' O.C.
64	BW		<i>Buxus sempervirens</i> green velvet	GREEN VELVET BOXWOOD	18" Ht. (Min.) (2 Gal. Container)		3.0' O.C.
18	PI		<i>Pinus strobus</i>	WHITE PINE	6" Ht. (Min.)	A	AS SHOWN OR 30' O.C.
10	AH		<i>Ilex opaca</i>	AMERICAN HOLLY	6" Ht. (Min.)	A	AS SHOWN OR 30' O.C.
9	AH		<i>Halesia carolina</i>	CAROLINA SILVERBELL	1 3/4" Cal.	B	AS SHOWN OR 30' O.C.



# red leonard associates

1340 KEMPER MEADOW DR.  
FOREST PARK, OH 45240  
513-574-9500

## RL-4884-S1

09/15/17

## CIRCLE K

12415 TAYLORSVILLE RD  
LOUISVILLE, KY



**EXTERIOR**  
LIGHTING LAYOUT

# CHANGING THE INDUSTRY STANDARD USING YOUR INTERACTIVE SITE PLAN



TO USE THE INTERACTIVE FEATURES OF THIS PLAN, MAKE SURE YOU ARE VIEWING IT IN ADOBE READER.

IF YOU DO NOT HAVE ADOBE READER INSTALLED ON YOUR SYSTEM, IT IS AVAILABLE FOR DOWNLOAD AT THE FOLLOWING LINK:

[HTTPS://GET.ADOBE.COM/READER/](https://get.adobe.com/reader/)



TO USE QR CODES, YOU CAN CLICK ON YOUR SCREEN OR SCAN WITH YOUR SMARTPHONE.

QR SCANNERS ARE AVAILABLE BY VISITING [REDLEONARD.COM](http://REDLEONARD.COM) OR YOUR APP STORE.

## HOW TO USE YOUR INTERACTIVE SITE PLAN



CLICK OR SCAN  
FOR INSTRUCTIONS

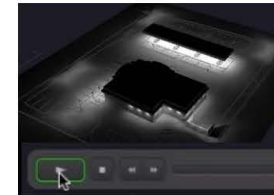
## INTERACTIVE PLAN MODEL



THE ISOMETRIC VIEW CAN BE CLICKED TO ACCESS AN INTERACTIVE 3D VERSION OF THE SITE PLAN.

RIGHT-CLICK AND CHOOSE "DISABLE CONTENT" TO RETURN TO THE ISOMETRIC PLAN VIEW.

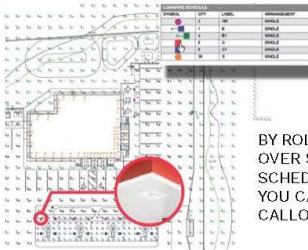
## SITE VIDEO



CLICKING THE BLACK AND WHITE SITE IMAGE PLAYS A VIDEO THAT PANS AROUND THE ENTIRE SITE. YOU CAN PAUSE THE VIDEO AT ANY TIME FOR A BETTER LOOK.

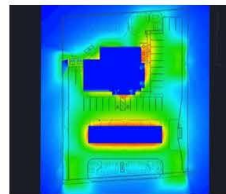
RIGHT-CLICK AND CHOOSE "DISABLE CONTENT" TO RETURN TO THE DEFAULT IMAGE.

## FIXTURE CALLOUTS



BY ROLLING YOUR CURSOR OVER SYMBOLS IN THE SCHEDULE, YOU CAN VIEW VISUAL CALLOUTS OF EACH FIXTURE.

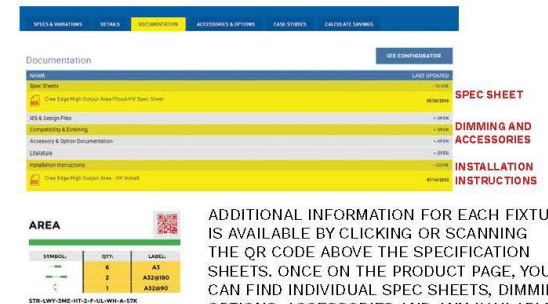
## PSEUDO COLOR VIEWS



THE PSEUDO COLOR VIEWS CAN BE CLICKED TO ACCESS A SLIDESHOW WHERE YOU CAN PAN BETWEEN IMAGES FOR COMPARISON USING THE ARROWS.

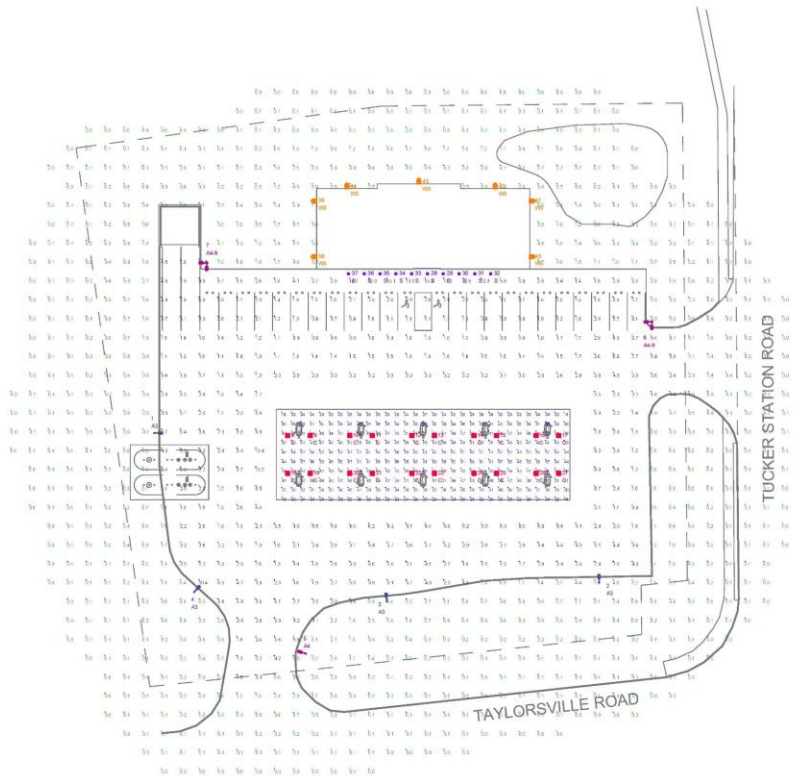
RIGHT-CLICK AND CHOOSE "DISABLE CONTENT" TO RETURN TO THE PSEUDO COLOR PLAN VIEWS.

## ADDITIONAL INFORMATION



ADDITIONAL INFORMATION FOR EACH FIXTURE IS AVAILABLE BY CLICKING OR SCANNING THE QR CODE ABOVE THE SPECIFICATION SHEETS. ONCE ON THE PRODUCT PAGE, YOU CAN FIND INDIVIDUAL SPEC SHEETS, DIMMING OPTIONS, ACCESSORIES AND ANY AVAILABLE INSTALLATION INSTRUCTIONS BY NAVIGATING TO THE "DOCUMENTATION" TAB.





NOTE:  
- ALL AREA LIGHTS ON 15 FT. POLE MOUNTED ON 2 FT. CONCRETE BASE

FOOT CANDLE LEVELS CALCULATED AT GRADE USING INITIAL LUMEN VALUES

LABEL	AVG	MAX	MIN	AVG/MIN	MAX/MIN
PAVED AREA	3.43	13.1	0.6	5.72	21.83
UNREFINED	0.72	5.3	0.0	N/A	N/A
UNDER CANOPY	42.67	65	18	2.34	3.61

LUMINAIRE LOCATION SUMMARY

LUM. NO.	LABEL	MTG. HT.
1	A3	17
2	A3	17
3	A3	17
4	A3	17
5	A4	17
6	A4-S	17
7	A4-S	17
8	C	16
9	C	16
10	C	16
11	C	16
12	C	16
13	C	16
14	C	16
15	C	16
16	C	16
17	C	16
18	C	16
19	C	16
20	C	16
21	C	16
22	C	16
23	C	16
24	C	16
25	C	16
26	C	16
27	C	16
28	S	12
29	S	12
30	S	12
31	S	12
32	S	12
33	S	12
34	S	12
35	S	12
36	S	12
37	S	12
38	W3	12
39	W3	12
40	W3	12
41	W3	12
42	W3	12
43	W3	12
44	W3	12

LUMINAIRE SCHEDULE

SYMBOL	QTY	LABEL	ARRANGEMENT	LUMENS	LLF	ARR. WATTS	TOTAL WATTS	MANUFACTURER	DESCRIPTION
	4	A3	SINGLE	10682	1.030	101	404	Cree Inc	BXSP-B-HT-3ME-B-57K-UL-XX
	1	A4	SINGLE	10442	1.030	101	101	Cree Inc	BXSP-B-HT-4ME-B-57K-UL-XX
	2	A4-S	2 @ 90 DEGREES	10442	1.030	202	404	Cree Inc	BXSP-B-HT-4ME-B-57K-UL-XX
	20	C	SINGLE	19932	1.030	145.04	2900.8	Cree Inc	CPY250-B-DM-D-E-UL-WH-57K
	10	S	SINGLE	1813	1.000	19.67	196.7	Cree Inc	UR6-T8L-40K
	7	W3	SINGLE	4931	1.030	42.86	300.72	Cree Inc	XSPH403MC-UZ

ROLL YOUR CURSOR OVER EACH FIXTURE ON THE LUMINAIRE SCHEDULE TO SEE A FIXTURE IMAGE ON THE PLAN



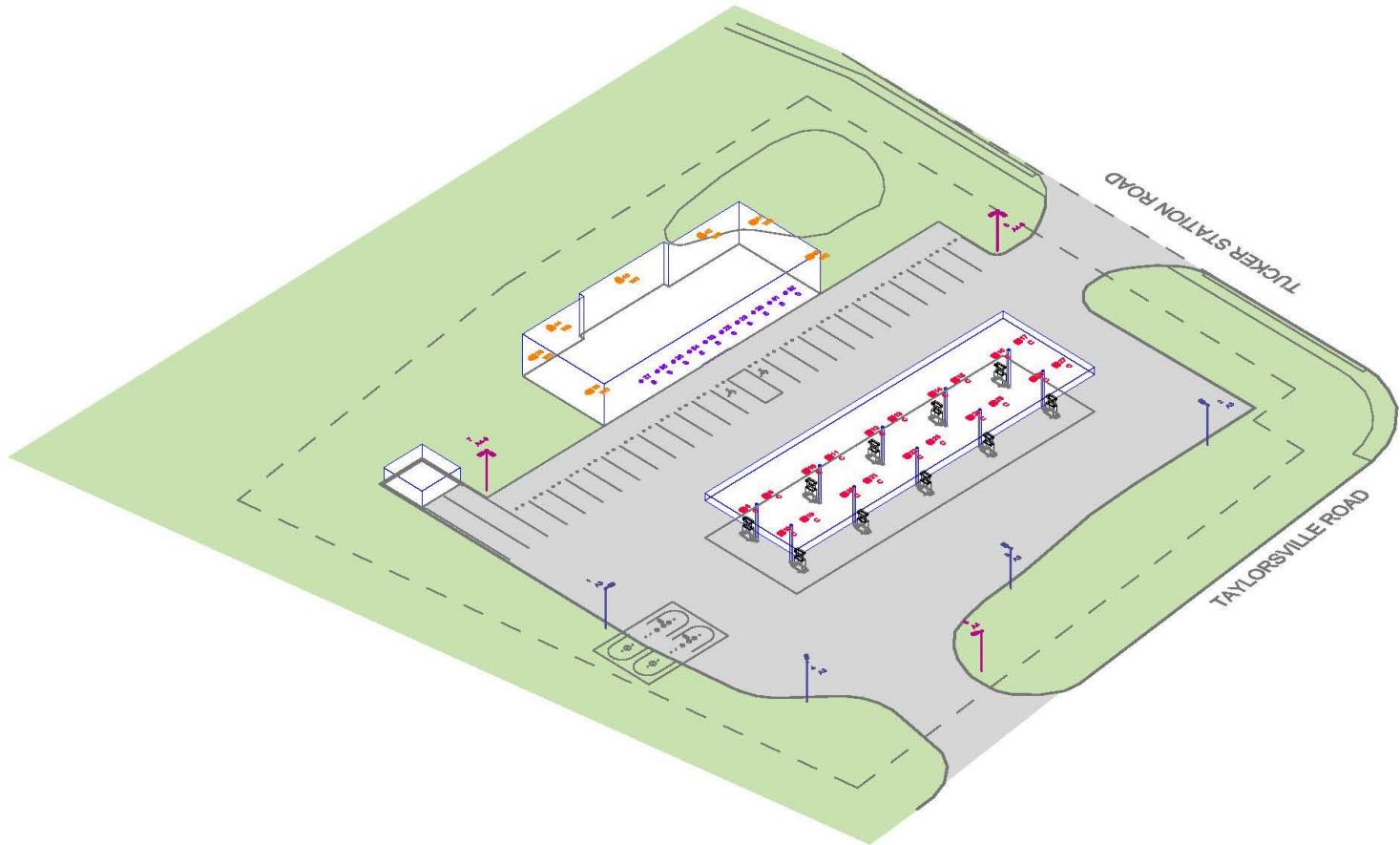
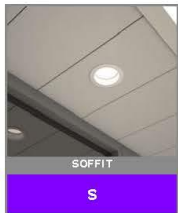
THIS DOCUMENT IS THE PROPERTY OF RED LEONARD ASSOCIATES, INC. (RLA) AND IS NOT TO BE REPRODUCED OR TRANSMITTED IN ANY FORM OR BY ANY MEANS, ELECTRONIC OR MECHANICAL, INCLUDING PHOTOCOPYING, RECORDING, OR BY ANY INFORMATION STORAGE AND RETRIEVAL SYSTEM, WITHOUT THE WRITTEN PERMISSION OF RLA. THE INFORMATION CONTAINED HEREIN IS FOR THE EXCLUSIVE USE OF THE CLIENT AND IS NOT TO BE DISCLOSED TO ANY OTHER PARTY WITHOUT THE WRITTEN PERMISSION OF RLA. THE CLIENT AGREES TO HOLD RLA HARMLESS FROM ANY AND ALL CLAIMS, DAMAGES, LOSSES, AND EXPENSES, INCLUDING ATTORNEY'S FEES, ARISING OUT OF OR RESULTING FROM THE USE OF THIS DOCUMENT OR THE INFORMATION CONTAINED HEREIN.

SCALE: 1" = 20'  
DATE: 8/15/17

PROJECT NAME:  
CIRCLE K  
LOUISVILLE, KY  
RL-4884-S1



**RL-4884-S1**



CLICK OR SCAN HERE FOR  
EXTERIOR OPTIONS

#### 3D CONTENT QUICK HELP GUIDE



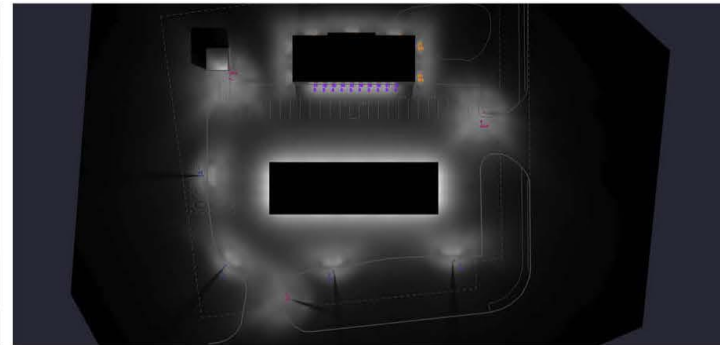
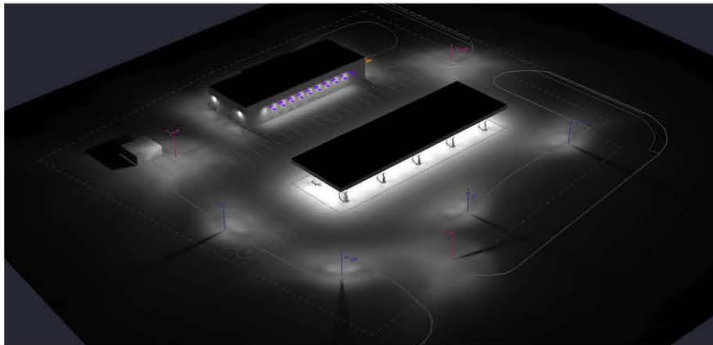
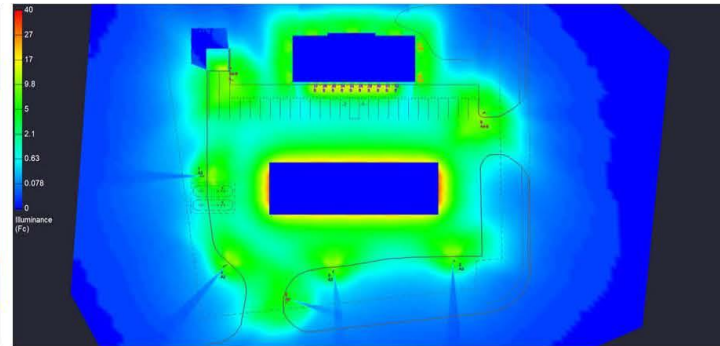
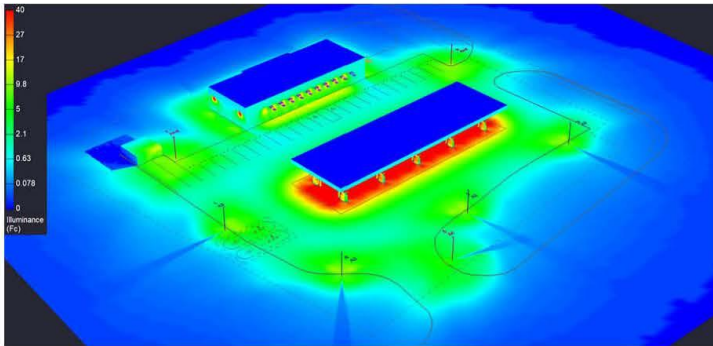
CLICK THE IMAGE TO ACTIVATE THE  
3D CONTENT / RIGHT CLICK TO DISABLE





RL-4884-S1

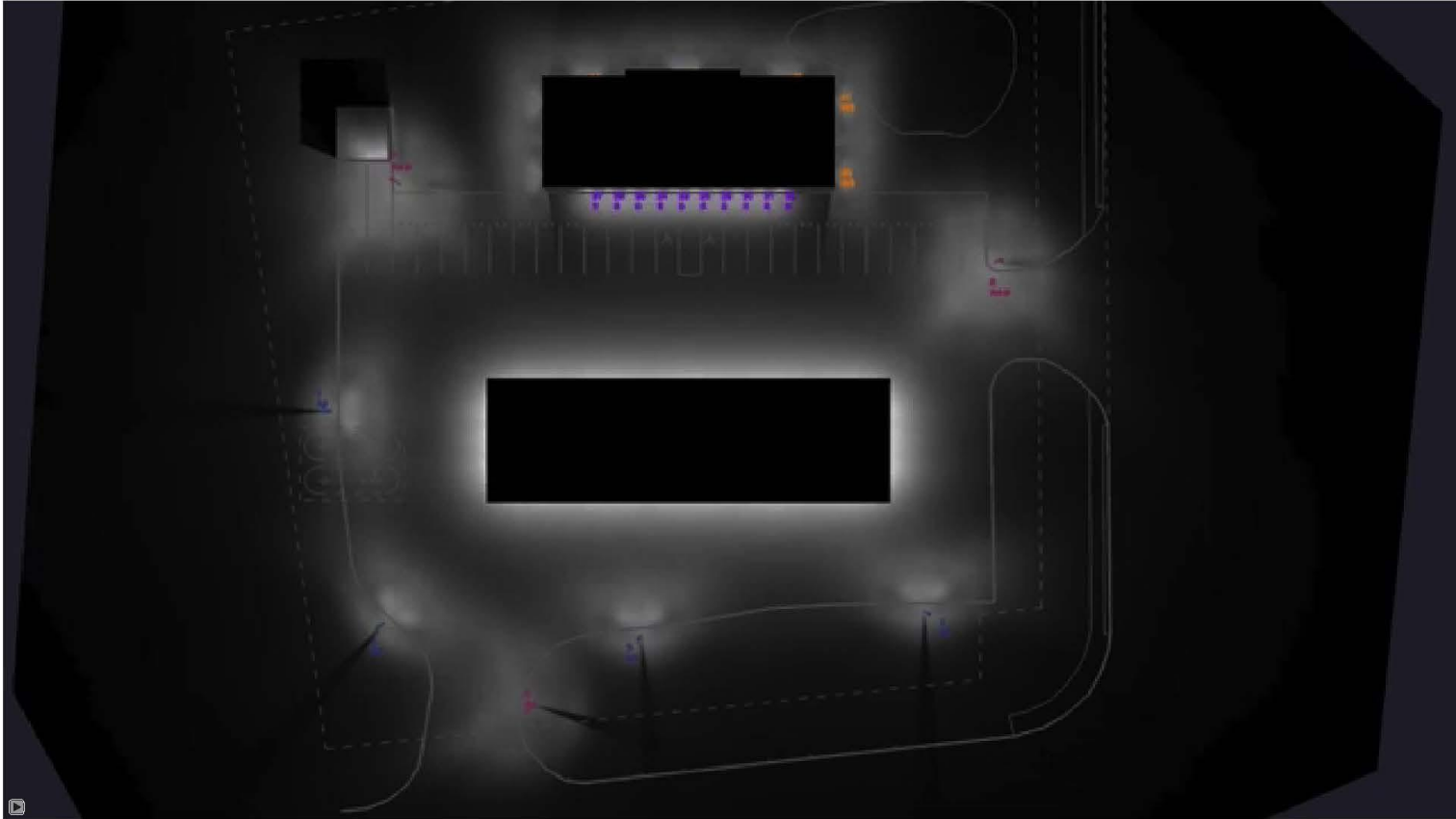
CLICK THE IMAGE TO ACTIVATE THE  
SLIDESHOW / RIGHT CLICK TO DISABLE





**RL-4884-S1**

CLICK THE IMAGE TO ACTIVATE THE  
VIDEO / RIGHT CLICK TO DISABLE







AREA

SYMBOL:	QTY:	LABEL:
	4	A3

BXSP-B-HT-3ME-B-57K-UL-XX

	1	A4
	2	A4-9

BXSP-B-HT-4ME-B-57K-UL-XX

**XSP Series**  
XSP LED Downlight - DALI Dimmable - 4000K - 40W

**Performance Summary**

Model	Power (W)	Beam Angle (°)	Light Output (lm)	Color Temp (K)	Dimming
BXSP-B-HT-3ME-B-57K-UL-XX	40	30	3000	5700	Yes
BXSP-B-HT-4ME-B-57K-UL-XX	40	30	3000	5700	Yes

**Dimensions**

Overall Depth: 1.5" (38mm)  
Overall Width: 4.5" (114mm)  
Cutout Diameter: 4.1" (104mm)

**Weight**

Net Weight: 1.2 lbs (0.54 kg)  
Gross Weight: 1.5 lbs (0.68 kg)

**Warranty**

5 Year Limited Warranty

CANOPY

SYMBOL:	QTY:	LABEL:
	20	C

CPY250-B-DM-D-E-UL-WH-57K

**CPY Series - Version B**  
CPY LED Canopy Light - DALI Dimmable - 4000K - 40W

**Performance Summary**

Model	Power (W)	Beam Angle (°)	Light Output (lm)	Color Temp (K)	Dimming
CPY250-B-DM-D-E-UL-WH-57K	40	30	3000	5700	Yes

**Dimensions**

Overall Depth: 1.5" (38mm)  
Overall Width: 4.5" (114mm)  
Cutout Diameter: 4.1" (104mm)

**Weight**

Net Weight: 1.2 lbs (0.54 kg)  
Gross Weight: 1.5 lbs (0.68 kg)

**Warranty**

5 Year Limited Warranty

SOFFIT

SYMBOL:	QTY:	LABEL:
	10	S

LR6-18L-40K

**LR6 Series**  
LR6 LED Soffit Light - DALI Dimmable - 4000K - 40W

**Performance Summary**

Model	Power (W)	Beam Angle (°)	Light Output (lm)	Color Temp (K)	Dimming
LR6-18L-40K	40	30	3000	4000	Yes

**Dimensions**

Overall Depth: 1.5" (38mm)  
Overall Width: 4.5" (114mm)  
Cutout Diameter: 4.1" (104mm)

**Weight**

Net Weight: 1.2 lbs (0.54 kg)  
Gross Weight: 1.5 lbs (0.68 kg)

**Warranty**

5 Year Limited Warranty

WALL MOUNTED

SYMBOL:	QTY:	LABEL:
	7	W3

XSPWA03MC-UZ

**XSP Series**  
XSP LED Wall Mount Light - DALI Dimmable - 4000K - 40W

**Performance Summary**

Model	Power (W)	Beam Angle (°)	Light Output (lm)	Color Temp (K)	Dimming
XSPWA03MC-UZ	40	30	3000	4000	Yes

**Dimensions**

Overall Depth: 1.5" (38mm)  
Overall Width: 4.5" (114mm)  
Cutout Diameter: 4.1" (104mm)

**Weight**

Net Weight: 1.2 lbs (0.54 kg)  
Gross Weight: 1.5 lbs (0.68 kg)

**Warranty**

5 Year Limited Warranty

**CREE**

**Product Specifications**

**LED Specifications**

Model	Power (W)	Beam Angle (°)	Light Output (lm)	Color Temp (K)	Dimming
BXSP-B-HT-3ME-B-57K-UL-XX	40	30	3000	5700	Yes
BXSP-B-HT-4ME-B-57K-UL-XX	40	30	3000	5700	Yes

**Dimensions**

Overall Depth: 1.5" (38mm)  
Overall Width: 4.5" (114mm)  
Cutout Diameter: 4.1" (104mm)

**Weight**

Net Weight: 1.2 lbs (0.54 kg)  
Gross Weight: 1.5 lbs (0.68 kg)

**Warranty**

5 Year Limited Warranty

**CREE**

**Product Specifications**

**LED Specifications**

Model	Power (W)	Beam Angle (°)	Light Output (lm)	Color Temp (K)	Dimming
CPY250-B-DM-D-E-UL-WH-57K	40	30	3000	5700	Yes

**Dimensions**

Overall Depth: 1.5" (38mm)  
Overall Width: 4.5" (114mm)  
Cutout Diameter: 4.1" (104mm)

**Weight**

Net Weight: 1.2 lbs (0.54 kg)  
Gross Weight: 1.5 lbs (0.68 kg)

**Warranty**

5 Year Limited Warranty

**CREE**

**Product Specifications**

**LED Specifications**

Model	Power (W)	Beam Angle (°)	Light Output (lm)	Color Temp (K)	Dimming
LR6-18L-40K	40	30	3000	4000	Yes

**Dimensions**

Overall Depth: 1.5" (38mm)  
Overall Width: 4.5" (114mm)  
Cutout Diameter: 4.1" (104mm)

**Weight**

Net Weight: 1.2 lbs (0.54 kg)  
Gross Weight: 1.5 lbs (0.68 kg)

**Warranty**

5 Year Limited Warranty

# red leonard associates

## CANADA

### WESTERN CANADA

TOM SOUTHAM  
tom.southam@redleonard.com  
t. 604-999-2959

### CENTRAL CANADA

JIM RIDD  
jim.ridd@redleonard.com  
t. 905-302-0072

### EASTERN CANADA

ELVIN MACKAY  
elvin.mackay@redleonard.com  
t. 514-706-0378

## MIDWESTERN REGION

### ILLINOIS

BOB ROECKER  
bob.roecker@redleonard.com  
t. 815-222-7795

### INDIANA

STEVE VEACH  
steve.veach@redleonard.com  
t. 765-212-6490

### IOWA

NATHAN BOECKMAN  
nathan.boeckman@redleonard.com  
t. 712-560-5570

### KENTUCKY

MARK BRANDIEWIE  
mark.brand@redleonard.com  
t. 513-702-6085

### MISSOURI

ISAAC OOK  
isaac.ook@redleonard.com  
t. 573-355-1765

### OHIO

JAYME LEONARD  
jayme.leonard@redleonard.com  
t. 513-574-9500

### MARK TRAU

mark.trau@redleonard.com  
t. 440-453-9195

## NORTHEASTERN REGION

### CONNECTICUT

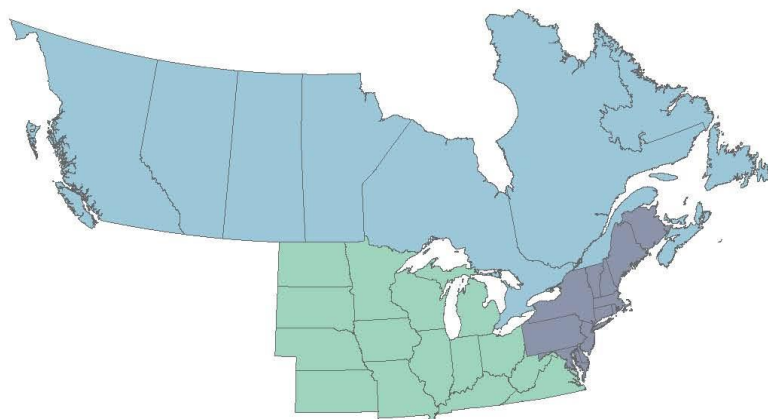
MARK RITTER  
mark.ritter@redleonard.com  
t. 203-555-9801

### NEW YORK

PAUL KULICAMP  
paul.kulicamp@redleonard.com  
t. 646-660-2750

### PAUL WRIGHT

paul.wright@redleonard.com  
t. 516-555-3400



## DESIGNLIGHTS CONSORTIUM® (DLC QUALIFIED PRODUCTS LIST)



CLICK OR SCAN  
FOR INFORMATION



## CREE LIGHTING PRODUCT CATALOG



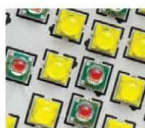
CLICK OR SCAN  
FOR INFORMATION



## CREE PETROLEUM UPGRADE GUIDE



CLICK OR SCAN  
FOR INFORMATION



## NanoOptic® TECHNOLOGY



CLICK OR SCAN  
FOR INFORMATION



## IP RATINGS DEMYSTIFIED



CLICK OR SCAN  
FOR INFORMATION



## CREE WARRANTY INFORMATION



CLICK OR SCAN  
FOR INFORMATION



## CREE PETROLEUM APPLICATION GUIDE



CLICK OR SCAN  
FOR INFORMATION



## CREE TRUEWHITE® & CRI (COLOR RENDERING INDEX)



CLICK OR SCAN  
FOR INFORMATION



## CROWN-WELD® SQUARE STRAIGHT STEEL POLES



CLICK OR SCAN  
FOR INFORMATION

DIRECT ACCESS. ANYWHERE. ANYTIME. ON ANY DEVICE.



CLICK HERE TO LOG IN



OR CONTACT YOUR LOCAL RED LEONARD ASSOCIATES REPRESENTATIVE TO JOIN



CHANGING THE INDUSTRY STANDARD | [WWW.REDLIONARD.COM](http://WWW.REDLIONARD.COM)