

# Board of Zoning Adjustment

## Staff Report

July 16, 2018



<b>Case No:</b>	18CUP1023
<b>Project Name:</b>	Harrogate Court Accessory Apartment
<b>Location:</b>	10500 Harrogate Court
<b>Owner(s):</b>	Beverly Schleicher
<b>Applicant:</b>	Matt Ridge
<b>Jurisdiction:</b>	Louisville Metro
<b>Council District:</b>	24 – Madonna Flood
<b>Case Manager:</b>	Jon Crumbie, Planning & Design Coordinator

### **REQUEST(S)**

- Conditional Use Permit to allow an accessory apartment in an R-5 zoning district and Neighborhood Form District

### **CASE SUMMARY/BACKGROUND**

The applicant is proposing to finish the basement of the existing residence to allow her mother to reside on site. The accessory apartment will consist of approximately 625 square feet.

### **STAFF FINDING / RECOMMENDATION**

There are four listed requirements for an accessory apartment. Items A., B., and D. will be met. Item C. does not apply. Based upon the information in the staff report and the testimony and evidence provided at the public hearing, the Board of Zoning Adjustment must determine if the proposal meets the standards established in the LDC for a Conditional Use Permit.

## **RELATED CASES**

**9-26-02** An Ordinance changing the zoning from R-4 to R-5 was approved by Fiscal Court on July 23, 2002. The Ordinance was for Timberbend Subdivision, Section 4.

## **TECHNICAL REVIEW**

There are no outstanding technical review items.

## **INTERESTED PARTY COMMENTS**

A neighborhood meeting was held on March 24, 2018. One person attended the meeting.

## **STANDARD OF REVIEW AND STAFF ANALYSIS FOR CONDITIONAL USE PERMIT**

### **1. Is the proposal consistent with applicable policies of the Comprehensive Plan?**

STAFF: The proposal is consistent with the applicable policies of the Comprehensive Plan. No new development will occur on the site. All improvements are inside the existing residence. The applicant is not proposing any new landscaping.

### **2. Is the proposal compatible with surrounding land uses and the general character of the area including factors such as height, bulk, scale, intensity, traffic, noise, odor, drainage, dust, lighting and appearance?**

STAFF: The proposal is compatible with the general character of the surrounding neighborhoods in terms of scale, intensity, traffic, noise, drainage and appearance.

### **3. Are necessary on-site and off-site public facilities such as transportation, sanitation, water, sewer, drainage, emergency services, education and recreation adequate to serve the proposed use?**

STAFF: The proposal has been reviewed by MSD and Transportation Planning and both have approved the plan. The Okolona Fire Protection District did not comment on the proposal.

### **4. Does the proposal comply with the following specific standards required to obtain the conditional use permit requested?**

4.2.3 Accessory Apartments Accessory Apartments may be allowed in the R-R, R-E, R-1, R-2, R-3, R-4, R-5 and U-N districts upon the granting of a conditional use permit and compliance with the listed requirements.

A. The principal and accessory dwellings shall be owned by the same person(s). Occupancy of the accessory unit shall occur only while the property owner(s) resides in the principal dwelling on the premises.

B. The accessory apartment shall be no greater than 650 square feet or 30% of the floor area of the principal residence, whichever is greater.

C. If the accessory apartment is located in a freestanding structure, it shall not exceed the height of the principal residence. In the TNFD, permissible height shall be as allowed by the form district regulation, unless the Board approves a differing height. In all other form districts, if the freestanding structure is located within 25 feet of a property line, the height of the structure shall not exceed the average height of accessory structures on abutting parcels or 15 feet, whichever is greater, unless the Board finds that a different height limit is appropriate.

D. Sites having accessory apartments shall provide off-street parking for the principal and accessory apartment as follows: 1. Neighborhood Form District - at least three off-street spaces provided on the lot, no more than two spaces outdoors; 2 Traditional Neighborhood - at least one off-street space provided on the lot; and 3. Other form districts - at least two off-street spaces provided on the lot; the Board may require additional parking spaces as appropriate.

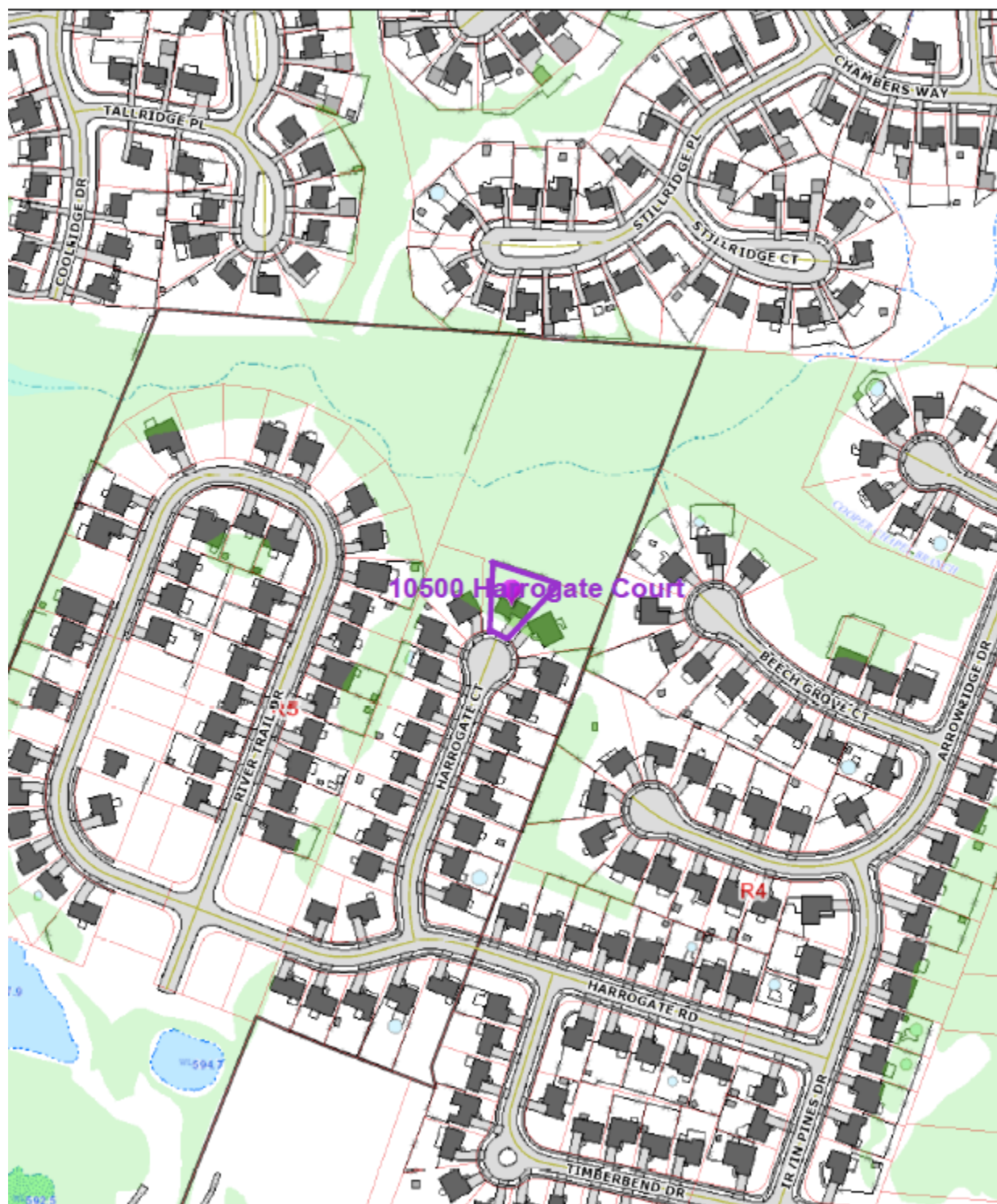
#### **NOTIFICATION**

Date	Purpose of Notice	Recipients
6/28/2018	Hearing before BOZA	1 <sup>st</sup> and 2 <sup>nd</sup> tier adjoining property owners Registered Neighborhood Groups in Council District 24
6/29/2018	Hearing before BOZA	Sign Posting

#### **ATTACHMENTS**

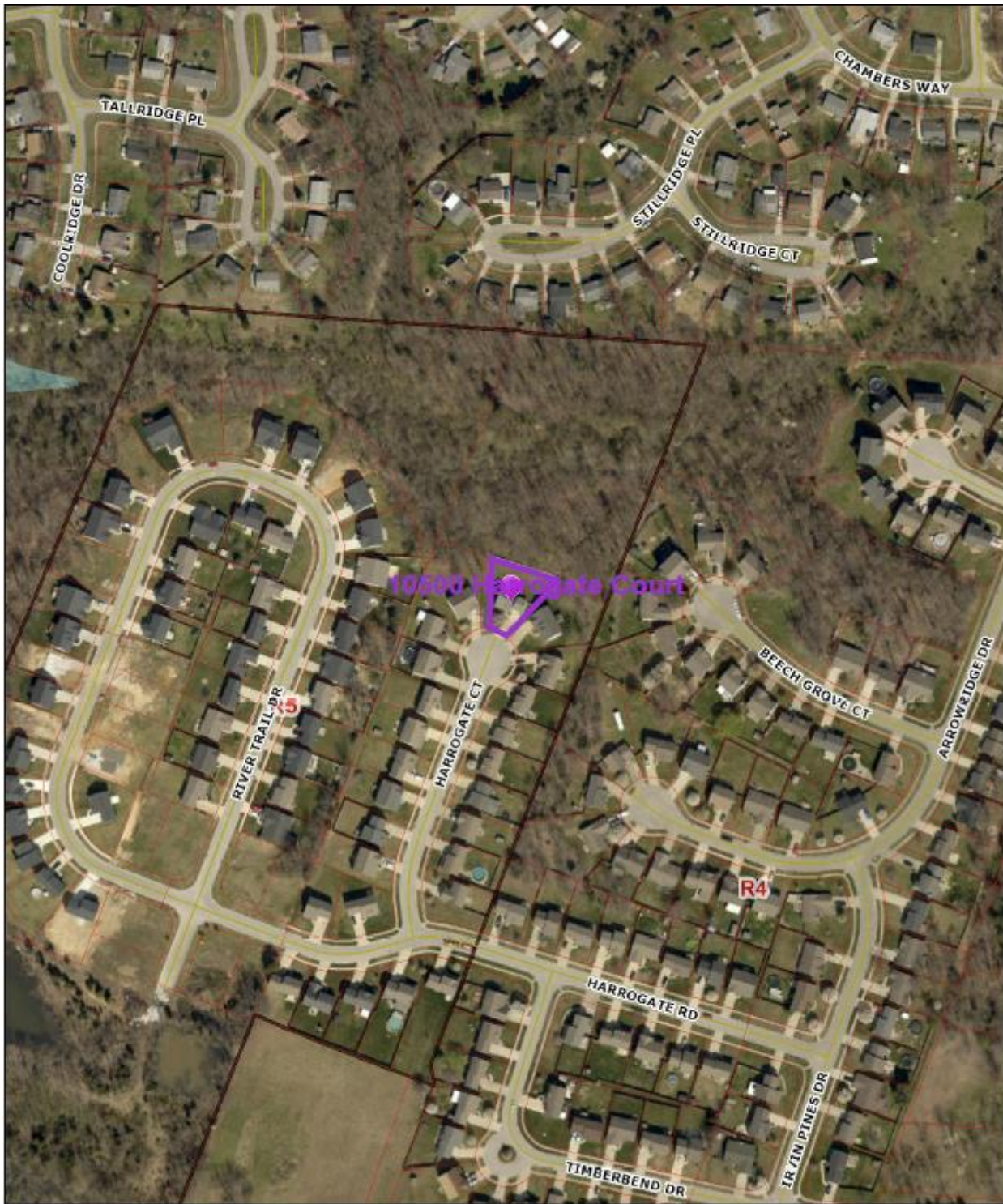
1. Zoning Map
2. Aerial Photograph
3. Conditions of Approval
4. Cornerstone 2020 Checklist

1. **Zoning Map**



2. Aerial Photograph





### 3. Conditions of Approval

1. The site shall be developed in strict compliance with the approved development plan (including all notes thereon). No further development shall occur on the site without prior review and approval by the Board.
2. The Conditional Use Permit shall be "exercised" as described in KRS 100.237 within two years of the Board's vote on this case. If the Conditional Use Permit is not so exercised, the site shall not be used for an accessory apartment without further review and approval by the Board.

### 4. Cornerstone 2020 Checklist

#### Neighborhood: Residential

#	Cornerstone 2020 Plan Element	Plan Element or Portion of Plan Element	Staff Finding	Staff Comments
1	Community Form/Land Use Guideline 1: Community Form	B.3: The proposal supports the creation of a mix of residential housing choices and densities for the neighborhood.	✓	The proposal will create an accessory apartment.
2	Community Form/Land Use Guideline 1: Community Form	B.3: If the proposal is classified as high density (greater than 12 dwelling units per acre), it is located on a major or minor arterial or in a location that has limited impact on adjacent low or moderate density developments.		
3	Community Form/Land Use Guideline 1: Community Form	B.3: If the proposal introduces a new housing type to the neighborhood, it is designed to be compatible with nearby land uses.	✓	The proposal will be located in the existing structure.
4	Community Form/Land Use Guideline 1: Community Form	B.3: Neighborhood streets are designed to invite human interaction and easy access through the use of connectivity, and design elements such as short blocks or bike/walkways in the middle of long blocks to connect with other streets.		
5	Community Form/Land Use Guideline 2: Centers	A.1. Locate activity centers within the Neighborhood Form District at street intersections with at least one of the intersecting streets classified as a collector or higher, AND one of the corners containing an established non-residential use.		

#	Cornerstone 2020 Plan Element	Plan Element or Portion of Plan Element	Staff Finding	Staff Comments
6	Community Form/Land Use Guideline 2: Centers	A.2: Develop non-residential and mixed uses only in designated activity centers except (a) where an existing center proposed to expand in a manner that is compatible with adjacent uses and in keeping with form district standards, (b) when a proposal is comparable in use, intensity, size and design to a designated center, (c) where a proposed use requires a particular location or does not fit well into a compact center, (d) where a commercial use mainly serves residents of a new planned or proposed development and is similar in character and intensity to the residential development, or (e) in older or redeveloping areas where the non-residential use is compatible with the surroundings and does not create a nuisance.		
7	Community Form/Land Use Guideline 2: Centers	A.4: Encourage a more compact development pattern that results in an efficient use of land and cost-effective infrastructure.		
8	Community Form/Land Use Guideline 2: Centers	A.5: Encourage a mix of compatible uses to reduce traffic by supporting combined trips, allow alternative modes of transportation and encourage vitality and sense of place.		
9	Community Form/Land Use Guideline 2: Centers	A.6: Encourage residential uses in centers above retail and other mixed-use multi-story retail buildings.		
10	Community Form/Land Use Guideline 2: Centers	A.7: Encourage new developments and rehabilitation of buildings to provide residential uses alone or in combination with retail and office uses.		
11	Community Form/Land Use Guideline 2: Centers	A.8/11: Allow centers in the Neighborhood Form District that serve the daily needs of residents and that are designed to minimize impact on residents through appropriate scale, placement and design.		

#	Cornerstone 2020 Plan Element	Plan Element or Portion of Plan Element	Staff Finding	Staff Comments
12	Community Form/Land Use Guideline 2: Centers	A.10: Encourage outlot development in underutilized parking lots provided location, scale, signs, lighting, parking and landscaping standards are met. Such outlot development should provide street-level retail with residential units above.		
13	Community Form/Land Use Guideline 2: Centers	A.12: Design large developments to be compact, multi-purpose centers organized around a central feature such as a public square, plaza or landscape element.		
14	Community Form/Land Use Guideline 2: Centers	A.13: Encourage sharing of entrance and parking facilities to reduce curb cuts and surface parking.		
15	Community Form/Land Use Guideline 2: Centers	A.14: Design and locate utility easements to provide access for maintenance and to provide services in common for adjacent developments.		
16	Community Form/Land Use Guideline 2: Centers	A.15: Encourage parking design and layout to balance safety, traffic, transit, pedestrian, environmental and aesthetic considerations.		
17	Community Form/Land Use Guideline 2: Centers	A.16: Encourage centers to be designed for easy access by alternative forms of transportation.		
18	Community Form/Land Use Guideline 3: Compatibility	A.1: The proposal is generally compatible within the scale and site design of nearby existing development and with the form district's pattern of development.		
19	Community Form/Land Use Guideline 3: Compatibility	A.2: The proposed building materials increase the new development's compatibility. (Only for a new development in a residential infill context, or if consideration of building materials used in the proposal is specifically required by the Land Development Code.)		



#	Cornerstone 2020 Plan Element	Plan Element or Portion of Plan Element	Staff Finding	Staff Comments
20	Community Form/Land Use Guideline 3: Compatibility	A.3: The proposal is compatible with adjacent residential areas, and if it introduces a new type of density, the proposal is designed to be compatible with surrounding land uses through the use of techniques to mitigate nuisances and provide appropriate transitions between land uses. Examples of appropriate mitigation include vegetative buffers, open spaces, landscaping and/or a transition of densities, site design, building heights, building design, materials and orientation that is compatible with those of nearby residences.		
21	Community Form/Land Use Guideline 3: Compatibility	A.6: The proposal mitigates any adverse impacts of its associated traffic on nearby existing communities.	✓	Transportation Planning has reviewed and approved the proposal/
22	Community Form/Land Use Guideline 3: Compatibility	A.8: The proposal mitigates adverse impacts of its lighting on nearby properties, and on the night sky.	✓	No lighting proposed.
23	Community Form/Land Use Guideline 3: Compatibility	A.10: The proposal includes a variety of housing types, including, but not limited to, single family detached, single family attached, multi-family, zero lot line, average lot, cluster and accessory residential structures, that reflect the form district pattern.		
24	Community Form/Land Use Guideline 3: Compatibility	A.11: If the proposal is a higher density or intensity use, it is located along a transit corridor AND in or near an activity center.		
25	Community Form/Land Use Guideline 3: Compatibility	A.13: The proposal creates housing for the elderly or persons with disabilities, which is located close to shopping, transit routes, and medical facilities (if possible).		
26	Community Form/Land Use Guideline 3: Compatibility	A.14/15: The proposal creates appropriate/inclusive housing that is compatible with site and building design of nearby housing.		

#	Cornerstone 2020 Plan Element	Plan Element or Portion of Plan Element	Staff Finding	Staff Comments
27	Community Form/Land Use Guideline 3: Compatibility	A.21: The proposal provides appropriate transitions between uses that are substantially different in scale and intensity or density of development such as landscaped buffer yards, vegetative berms, compatible building design and materials, height restrictions, or setback requirements.		
28	Community Form/Land Use Guideline 3: Compatibility	A.22: The proposal mitigates the impacts caused when incompatible developments unavoidably occur adjacent to one another by using buffers that are of varying designs such as landscaping, vegetative berms and/or walls, and that address those aspects of the development that have the potential to adversely impact existing area developments.		
29	Community Form/Land Use Guideline 3: Compatibility	A.23: Setbacks, lot dimensions and building heights are compatible with those of nearby developments that meet form district standards.	✓	The proposal will be located in the existing structure.
30	Community Form/Land Use Guideline 4: Open Space	A.2/3/7: The proposal provides open space that helps meet the needs of the community as a component of the development and provides for the continued maintenance of that open space.		
31	Community Form/Land Use Guideline 4: Open Space	A.4: Open space design is consistent with the pattern of development in the Neighborhood Form District.		
32	Community Form/Land Use Guideline 4: Open Space	A.5: The proposal integrates natural features into the pattern of development.		
33	Community Form/Land Use Guideline 5: Natural Areas and Scenic and Historic Resources	A.1: The proposal respects the natural features of the site through sensitive site design, avoids substantial changes to the topography and minimizes property damage and environmental degradation resulting from disturbance of natural systems.		

#	Cornerstone 2020 Plan Element	Plan Element or Portion of Plan Element	Staff Finding	Staff Comments
34	Community Form/Land Use Guideline 5: Natural Areas and Scenic and Historic Resources	A.2/4: The proposal includes the preservation, use or adaptive reuse of buildings, sites, districts and landscapes that are recognized as having historical or architectural value, and, if located within the impact area of these resources, is compatible in height, bulk, scale, architecture and placement.		
35	Community Form/Land Use Guideline 5: Natural Areas and Scenic and Historic Resources	A.6: Encourage development to avoid wet or highly permeable soils, severe, steep or unstable slopes with the potential for severe erosion.		
36	Mobility/Transportation Guideline 7: Circulation	A.1/2: The proposal will contribute its proportional share of the cost of roadway improvements and other services and public facilities made necessary by the development through physical improvements to these facilities, contribution of money, or other means.		
37	Mobility/Transportation Guideline 7: Circulation	A.6: The proposal's transportation facilities are compatible with and support access to surrounding land uses, and contribute to the appropriate development of adjacent lands. The proposal includes at least one continuous roadway through the development, adequate street stubs, and relies on cul-de-sacs only as short side streets or where natural features limit development of "through" roads.		
38	Mobility/Transportation Guideline 7: Circulation	A.9: The proposal includes the dedication of rights-of-way for street, transit corridors, bikeway and walkway facilities within or abutting the development.		
39	Mobility/Transportation Guideline 8: Transportation Facility Design	A.8: Adequate stub streets are provided for future roadway connections that support and contribute to appropriate development of adjacent land.		
40	Mobility/Transportation Guideline 8: Transportation Facility Design	A.9: Avoid access to development through areas of significantly lower intensity or density if such access would create a significant nuisance.		

#	Cornerstone 2020 Plan Element	Plan Element or Portion of Plan Element	Staff Finding	Staff Comments
41	Mobility/Transportation Guideline 8: Transportation Facility Design	A.11: The development provides for an appropriate functional hierarchy of streets and appropriate linkages between activity areas in and adjacent to the development site.		
42	Mobility/Transportation Guideline 9: Bicycle, Pedestrian and Transit	A.1/2: The proposal provides, where appropriate, for the movement of pedestrians, bicyclists and transit users around and through the development, provides bicycle and pedestrian connections to adjacent developments and to transit stops, and is appropriately located for its density and intensity.		
43	Livability/Environment Guideline 10: Flooding and Stormwater	The proposal's drainage plans have been approved by MSD, and the proposal mitigates negative impacts to the floodplain and minimizes impervious area. Solid blue line streams are protected through a vegetative buffer, and drainage designs are capable of accommodating upstream runoff assuming a fully-developed watershed. If streambank restoration or preservation is necessary, the proposal uses best management practices.	✓	The proposal has been reviewed and approved by MSD.
44	Livability/Environment Guideline 13: Landscape Character	A.3: The proposal includes additions and connections to a system of natural corridors that can provide habitat areas and allow for migration.		
45	Community Facilities Guideline 14: Infrastructure	A.2: The proposal is located in an area served by existing utilities or planned for utilities.	✓	There are existing utilities in the area.
46	Community Facilities Guideline 14: Infrastructure	A.3: The proposal has access to an adequate supply of potable water and water for fire-fighting purposes.	✓	The proposal will be served by the Okolona Fire Protection District.
47	Community Facilities Guideline 14: Infrastructure	A.4: The proposal has adequate means of sewage treatment and disposal to protect public health and to protect water quality in lakes and streams.	✓	The proposal is served by existing sewer.