

REVISIONS	Date	Description	By

ENGINEER



BlueStone

Engineers, PLLC

3703 Taylorsville Road, Suite 205

Louisville, Kentucky 40220

(502) 292-9288

www.bluestoneengineers.com

CLIENT

TSB DEVELOPMENT, INC.

833 VALLEY COLLEGE DRIVE

LOUISVILLE, KY 40272

502-935-4655

SIGNATURE

DATE

TITLE

WEST ORELL ROAD
WAIVER FOR SHARED
DRIVEWAY ACCESS

DRIVEWAY
PLAN

SHEET NO.

CP1

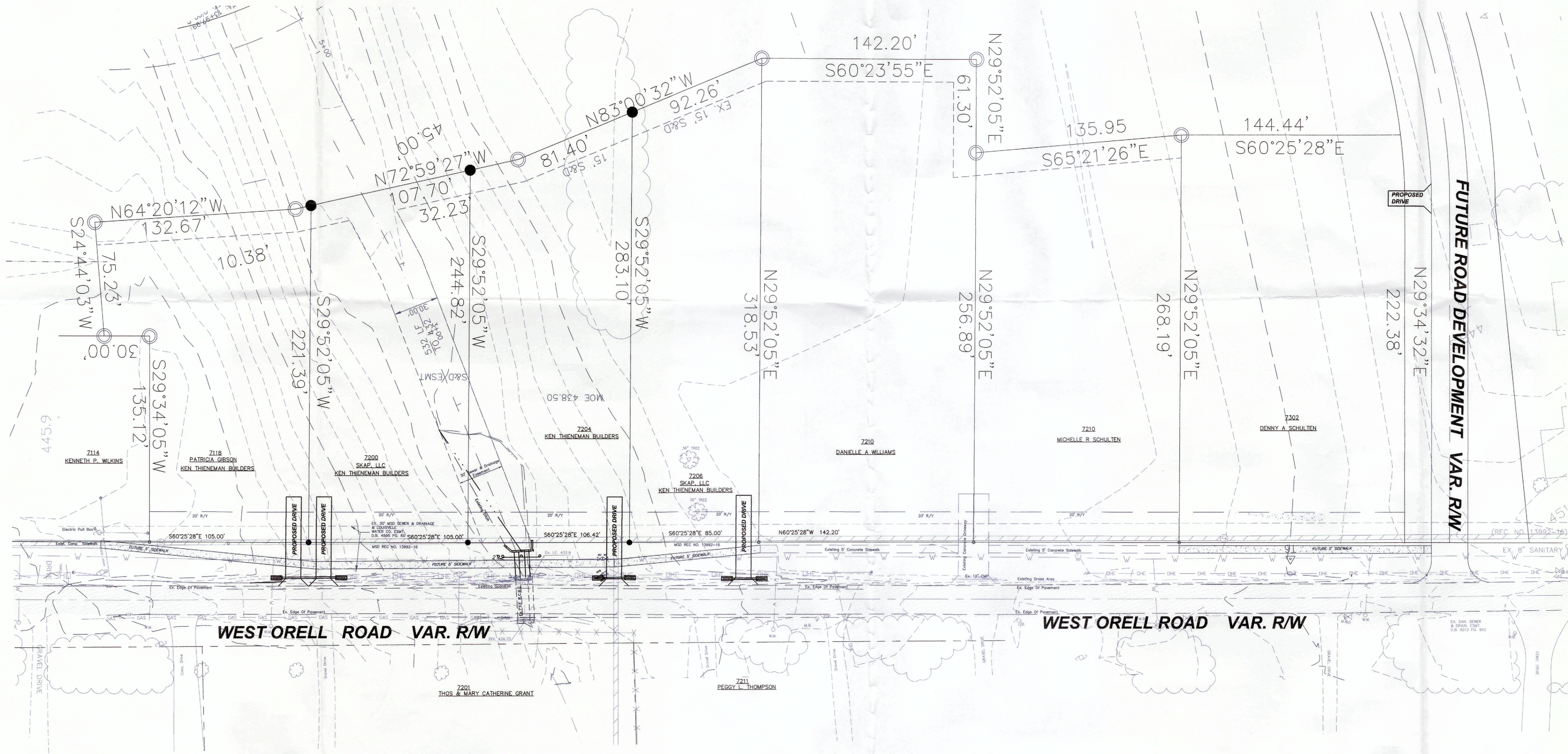
DATE: 09-5-18

SCALE: 1"=40'

DRAWN BY: DCW/DLW

CHECKED BY: CTC

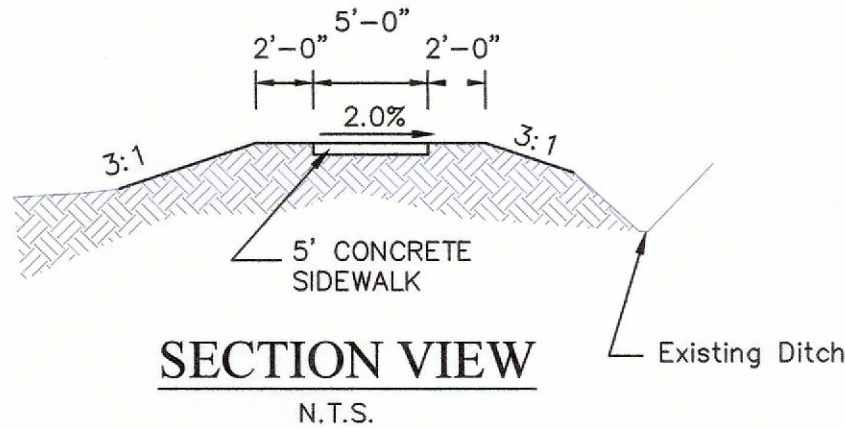
18WAIVER1021



RECEIVED
SEP 24 2018
PLANNING &
DESIGN SERVICES

CLEANOUT & MAINTENANCE SCHEDULE

For the sediment control, the contractor shall construct and maintain the silt fence and shall remove silt accumulation weekly and after 0.5 inches of rain or more until construction is complete and vegetation in the drainage area has been established. Please refer to the contractor's self inspection form for maintenance schedule for each BMP item whether shown here on or not.

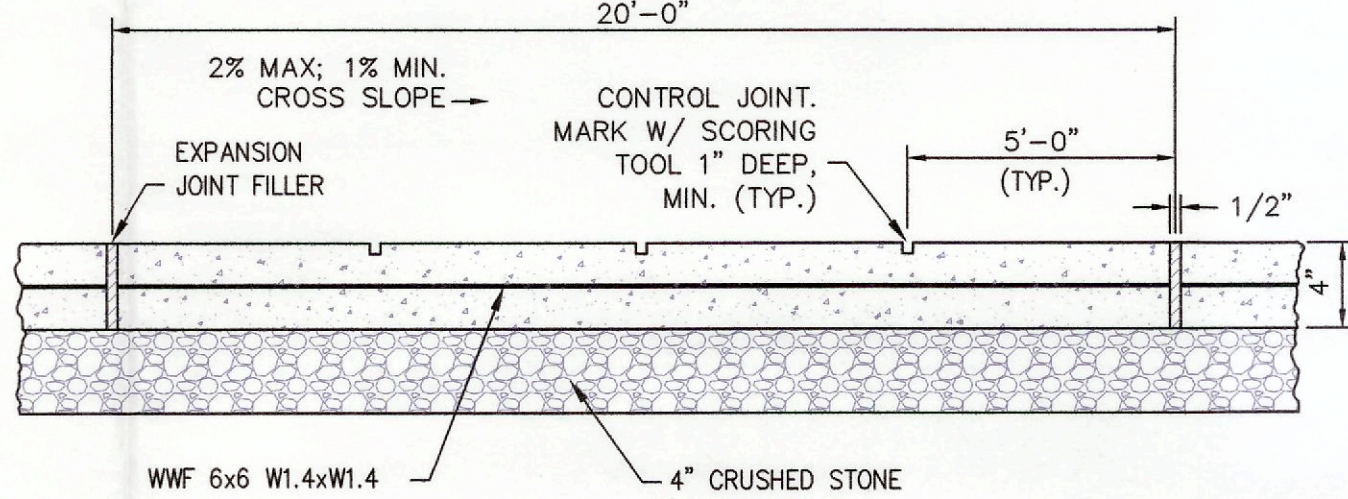
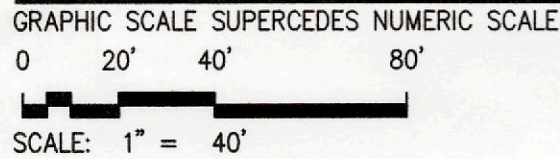


STANDARD DESIRABLE SLOPES

AREA	MAXIMUM	MINIMUM
LAWN AREAS	20%	2.0%
SWALES	5.0%	1.0%
GRASS BANKS *	3 : 1 SLOPE	
SIDEWALKS	8.0%	0.5%
BARRIER FREE RAMPS	8.0%	5.0%
PARKING AREAS *	5.0%	1.0%
ROADS AND DRIVES	6.0%	1.0%

* STEEPER SLOPES MAY BE APPROVED BY METRO PUBLIC WORKS

WEST ORELL ROAD DRIVEWAYS



NOTES:

1. CONCRETE SHALL BE 3500 PSI.
2. PROVIDE 1/4" EXPANSION JOINT WITH PREMOULDED FILLER STRIP AT 20' MAX SPACING IN WALK.
3. PROVIDE 1" DEEP, TOOLED CONTROL JOINTS AT 5' ON CENTER IN WALK.
4. PROVIDE EXPANSION JOINT CONTINUOUS WHERE WALK ABUTS CONCRETE STRUCTURES AND SIDEWALKS.
5. PROVIDE EDGE EXPANSION JOINT AT DOOR LOCATIONS AND EDGE OF BUILDING.
6. DRIVEWAYS SHALL BE INCREASED TO 6" IN DEPTH.
7. ALL CROSS SLOPES SHALL SHALL BE -2.0% MAXIMUM, THEN 3:1 TILL REACHING EXISTING GROUND.

CONCRETE SIDEWALK DETAIL

N.T.S.

PHASING AND SEQUENCING NOTES

1. Prior to any construction, the contractor shall install the silt fence, stone bags, and construction entrance on the site.
2. Once the silt fence, stone bags, and construction entrance have been installed, the contractor may start grading the site.
3. If any erosion control measures are removed, they shall be replaced or modified as such on the approved EPSC Plan with the site inspector.
4. All areas shall be stabilized once the grading has been completed. All erosion control measures will remain until grass areas have substantial vegetation.

MSD NOTES:

1. Disturbance to roadside ditches or swales shall be stabilized immediately after work.
2. Coordinate additional grading on lot for houses with MSD inspector and on individual EPSC lot plans.

EROSION PREVENTION AND SEDIMENT CONTROL NOTE

THE APPROVED EROSION PREVENTION AND SEDIMENT CONTROL (EPSC) PLAN SHALL BE IMPLEMENTED PRIOR TO ANY LAND-DISTURBING ACTIVITY ON THE CONSTRUCTION SITE. ANY MODIFICATIONS TO THE APPROVED EPSC PLAN MUST BE REVIEWED AND APPROVED BY MSD'S PRIVATE DEVELOPMENT REVIEW OFFICE. EPSC BMP'S (BEST MANAGEMENT PRACTICES) SHALL BE INSTALLED PER THE PLAN AND MSD STANDARDS.

DETENTION BASINS, IF APPLICABLE, SHALL BE CONSTRUCTED FIRST AND SHALL PERFORM AS SEDIMENT BASINS DURING CONSTRUCTION UNTIL THE CONTRIBUTING DRAINAGE AREAS ARE SEEDDED AND STABILIZED.

ACTIONS MUST BE TAKEN TO MINIMIZE THE TRACKING OF MUD AND SOIL FROM CONSTRUCTION AREAS ONTO PUBLIC ROADWAYS. SOIL TRACKED ONTO THE ROADWAY SHALL BE REMOVED DAILY.

SOIL STOCKPILES SHALL BE LOCATED AWAY FROM STREAMS, PONDS, SWALES, AND CATCH BASINS. STOCKPILES SHALL BE SEEDDED, MULCHED, AND ADEQUATELY CONTAINED THROUGH THE USE OF SILT FENCE.

ALL STREAM CROSSINGS MUST UTILIZE LOW-WATER CROSSING STRUCTURES PER MSD STANDARD DRAWING ER-02.

SEDIMENT-LADEN GROUNDWATER ENCOUNTERED DURING TRENCHING, BORING OR OTHER EXCAVATION ACTIVITIES SHALL BE PUMPED TO A SEDIMENT TRAPPING DEVICE PRIOR TO BEING DISCHARGED INTO A STREAM, POND, SWALE, OR CATCH BASIN.

WHERE CONSTRUCTION OR LAND DISTURBING ACTIVITY WILL OR HAS TEMPORARILY CEASED ON ANY PORTION OF A SITE, TEMPORARY SITE STABILIZATION MEASURES SHALL BE REQUIRED AS SOON AS PRACTICABLE, BUT NO LATER THAN 14 DAYS AFTER THE ACTIVITY HAS CEASED.



* CALL BEFORE YOU DIG "B.U.D." *
1 (800) 752-6007

NOTE: THE LOCATION OF UTILITIES SHOWN HEREON ARE FROM OBSERVED EVIDENCE OF ABOVE GROUND APPURTENANCES ONLY, OR UTILITY MARKINGS PERFORMED BY THIRD PARTIES (BEFORE YOU DIG SERVICES AND/OR LOCATION SERVICES).

NOTE: THE CONTRACTOR SHALL FIELD VERIFY THE LOCATION AND ELEVATION OF ALL UNDERGROUND UTILITIES PRIOR TO EXCAVATION AND SHALL CONTACT THE KENTUCKY UNDERGROUND PROTECTION, INC. A MINIMUM OF TWO WORKING DAYS PRIOR TO DIGGING AT TELEPHONE 1 (800) 752-6007. NO EXCAVATION SHALL COMMENCE UNTIL ALL APPLICABLE UTILITIES HAVE BEEN CLEARED.

NOTE: PRIOR TO ANY EXCAVATION FOR UNDERGROUND UTILITIES, CONTRACTOR SHALL EXPOSE AND VERIFY LOCATIONS (HORIZONTAL AND VERTICAL) OF ALL EXISTING UTILITIES INCLUDING BUT NOT LIMITED TO GAS, WATER, AND SANITARY SEWER. ANY CONFLICTS SHALL BE REPORTED, IMMEDIATELY, TO THE ENGINEER AND THE APPROPRIATE AUTHORITIES.