



Samuel Culbertson's Home and Carriage on S. 3rd St. University of Louisville Photographic Archives
1432 S. 3rd St.- Driveway Precedent



FOURTH AVENUE BETWEEN CHESTNUT STREET AND BROADWAY

Fence with Top Taller than 42" from Sidewalk at Front Property Line Precedent



1907 - P.G. Coker's apartment building at 722 W. Chestnut Street

722 W. Chestnut St.- Fence with Top Taller than 42" from Sidewalk at Front Property Line Precedent



ca. 1845 - Col R.T Durrett home. S.E. corner Brook and Chestnut. University of Louisville Photographic Archives

Wall Taller than 6' at property Line Precedent

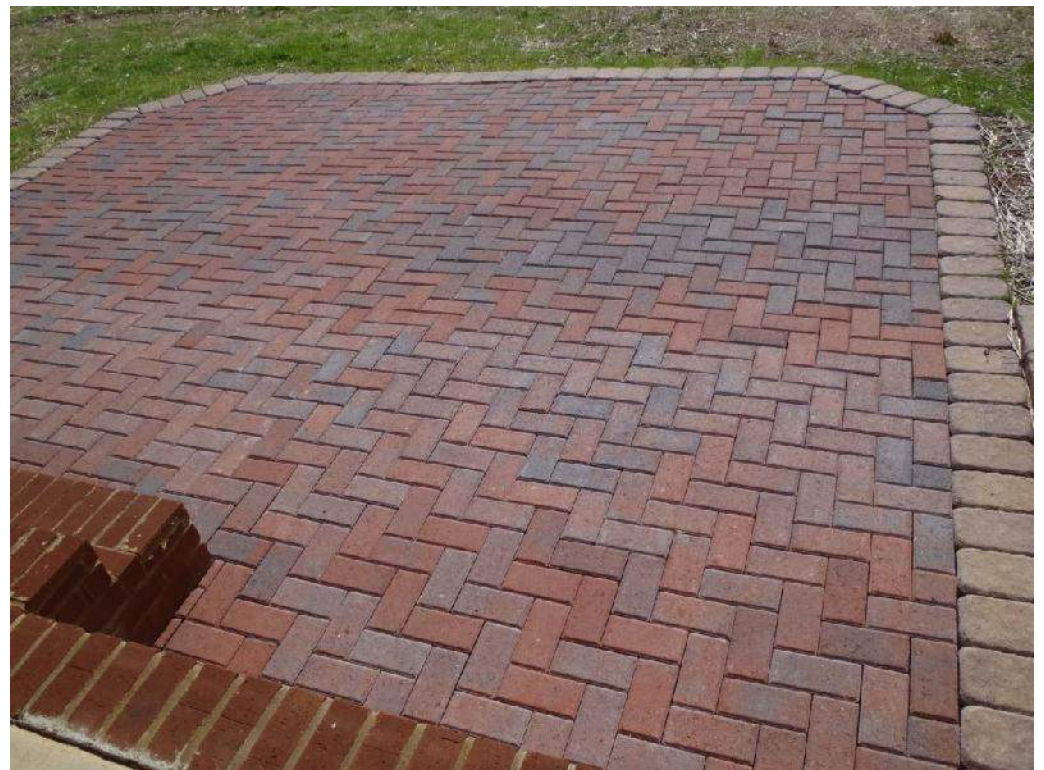


ca 1873 - South side of Walnut looking east from 4th toward 3rd. Stewart's Drv Goods would replace the house at right.

Walnut St. is Now Muhammad Ali Blvd.- Fence with Top Taller than 42" from Sidewalk at Front Property Line Precedent

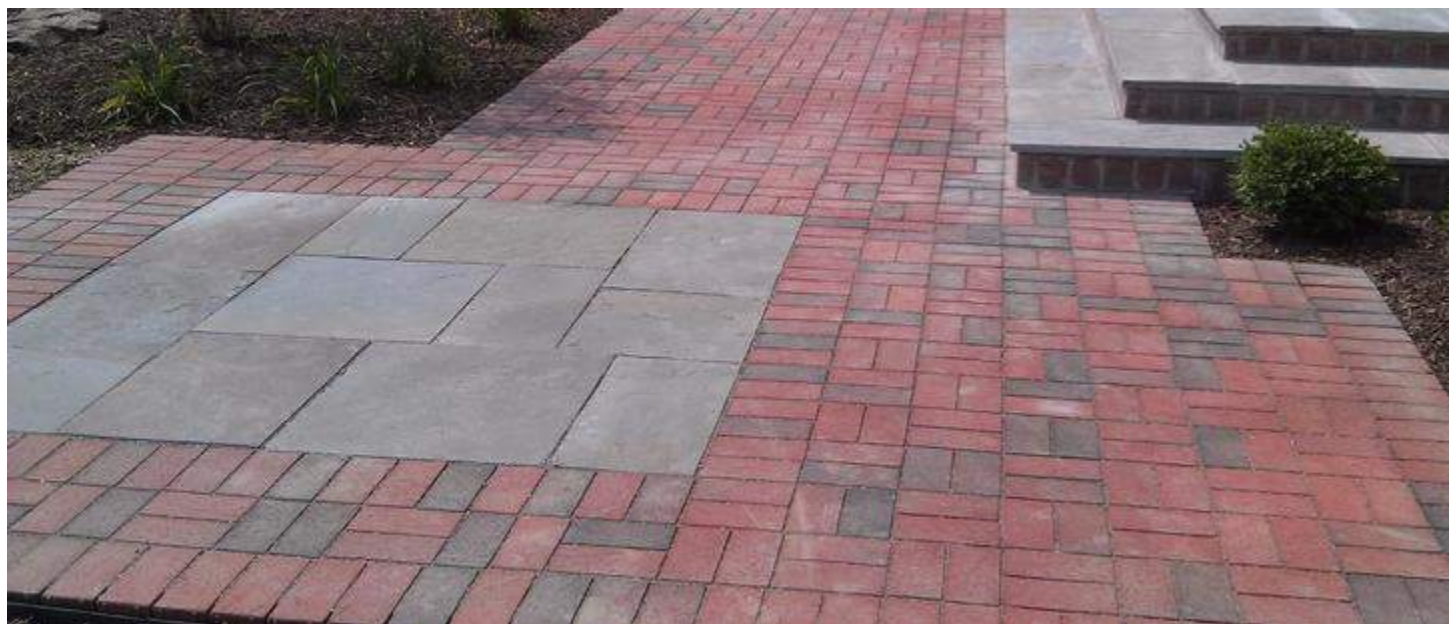


CLAY PAVER PATIOS/WALKWAYS





MOTOR COURT STONE INLAY W/ CLAY PAVERS





ASPHALT DRIVEWAY W/ CLAY PAVER BANDING



PAVER-EDGED GRAVEL PATH





DRIVEWAY GATE



PERGOLA