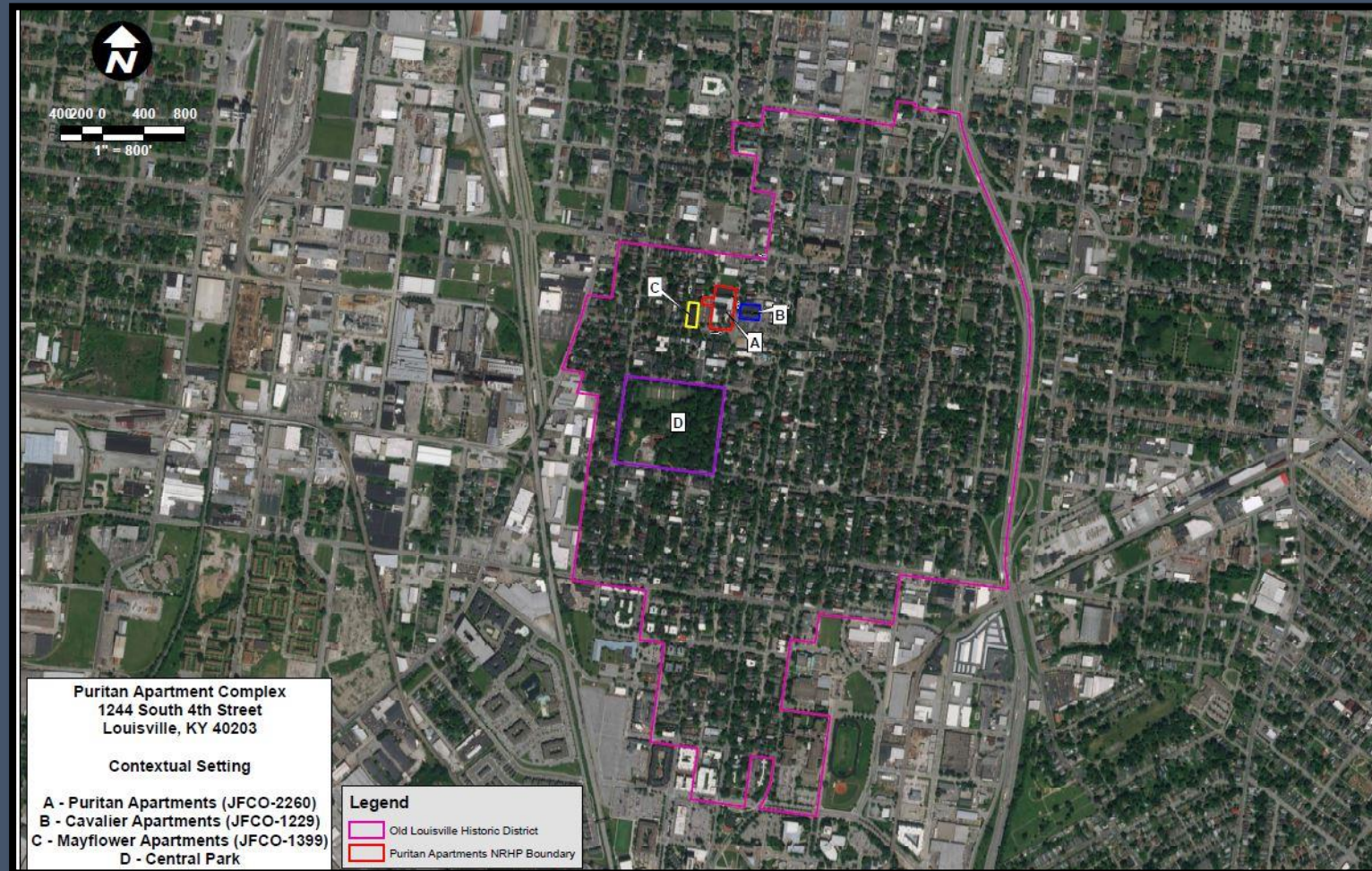


PALMER ENGINEERING

Engineering and Environmental Services

PURITAN APARTMENT HOTEL (JFCO-2260) CONTEXT/OLD LOUISVILLE NRHP DISTRICT



PURITAN APARTMENT HOTEL (JFCO-2260) SETTING



PURITAN APARTMENT HOTEL (JFCO-2260) SETTING



PURITAN APARTMENT HOTEL (JFCO-2260)

SETTING

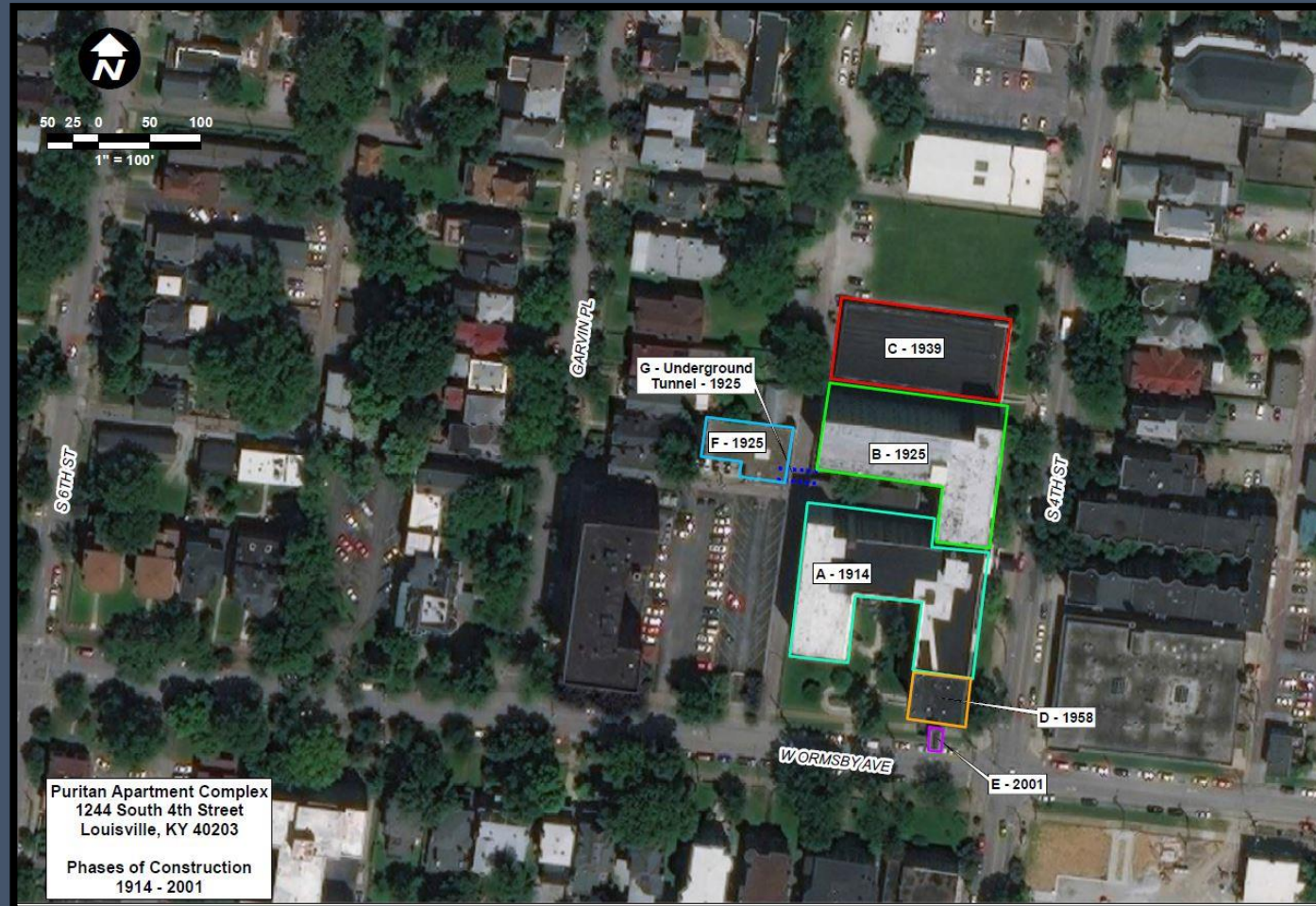


PURITAN APARTMENT HOTEL (JFCO-2260) PROPOSED NRHP PROPERTY BOUNDARIES



PURITAN APARTMENT HOTEL (JFCO-2260)

PHASES OF CONSTRUCTION



PURITAN APARTMENT HOTEL (JFCO-2260) PRIMARY FAÇADE (EAST ELEVATION)



PURITAN APARTMENT HOTEL (JFCO-2260) PRIMARY FAÇADE (EAST ELEVATION)



PURITAN APARTMENT HOTEL (JFCO-2260) PRIMARY FAÇADE (EAST ELEVATION)



PURITAN APARTMENT HOTEL (JFCO-2260) PRIMARY FAÇADE (EAST ELEVATION)



PURITAN APARTMENT HOTEL (JFCO-2260) PRIMARY FAÇADE (EAST ELEVATION)



PURITAN APARTMENT HOTEL (JFCO-2260) SECONDARY FAÇADE (SOUTH ELEVATION)



PURITAN APARTMENT HOTEL (JFCO-2260) SECONDARY FAÇADE (SOUTH ELEVATION)



PURITAN APARTMENT HOTEL (JFCO-2260) SECONDARY FAÇADE (SOUTH ELEVATION)



PURITAN APARTMENT HOTEL (JFCO-2260) SECONDARY FAÇADE (SOUTH ELEVATION)



PURITAN APARTMENT HOTEL (JFCO-2260) REAR (WEST ELEVATION)



PURITAN APARTMENT HOTEL (JFCO-2260) REAR (WEST ELEVATION)



PURITAN APARTMENT HOTEL (JFCO-2260) REAR (WEST ELEVATION)



PURITAN APARTMENT HOTEL (JFCO-2260) REAR (WEST ELEVATION)



PURITAN APARTMENT HOTEL (JFCO-2260) REAR (WEST ELEVATION)



PURITAN APARTMENT HOTEL (JFCO-2260) NORTH ELEVATION



PURITAN APARTMENT HOTEL (JFCO-2260)

INTERIOR VIEWS



PURITAN APARTMENT HOTEL (JFCO-2260)

INTERIOR VIEWS



PURITAN APARTMENT HOTEL (JFCO-2260)

INTERIOR VIEWS



PURITAN APARTMENT HOTEL (JFCO-2260)

INTERIOR VIEWS



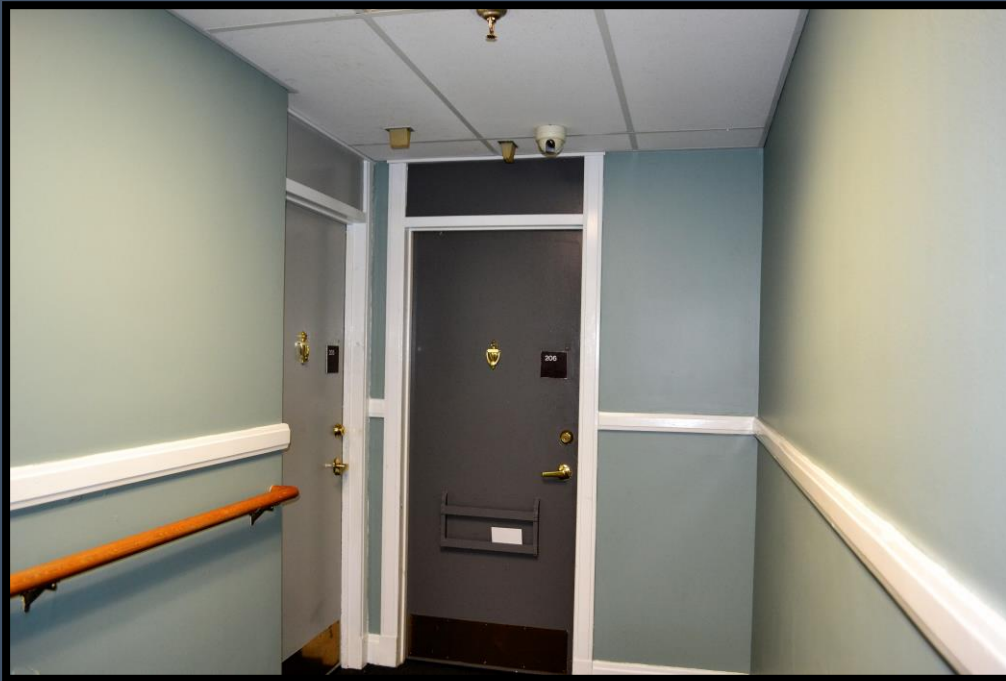
PURITAN APARTMENT HOTEL (JFCO-2260)

INTERIOR VIEWS



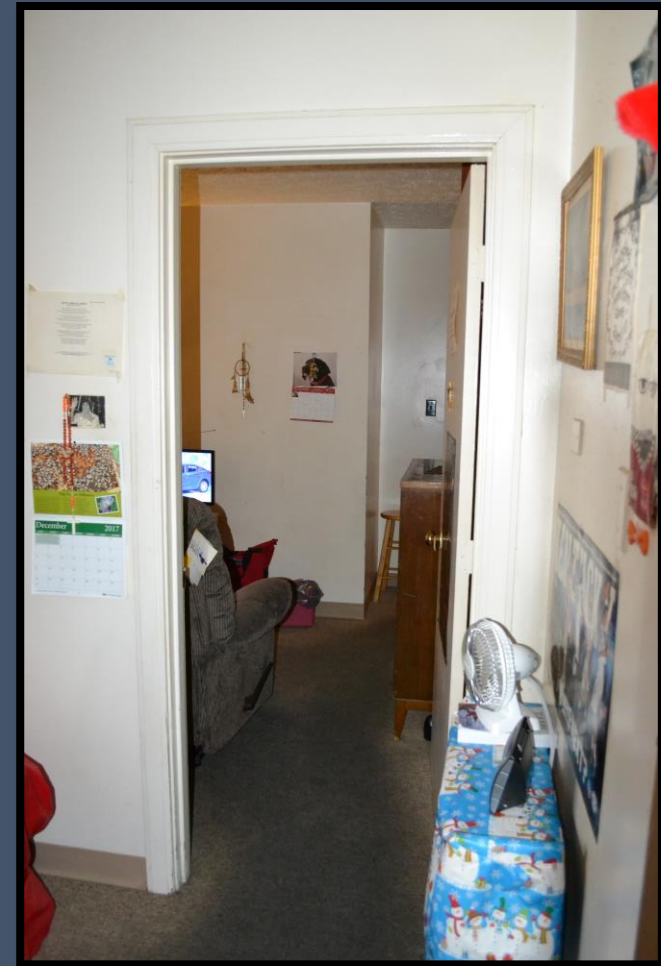
PURITAN APARTMENT HOTEL (JFCO-2260)

INTERIOR VIEWS



PURITAN APARTMENT HOTEL (JFCO-2260)

INTERIOR VIEWS



PURITAN APARTMENT HOTEL (JFCO-2260)

INTERIOR VIEWS - BASEMENT



PURITAN APARTMENT HOTEL (JFCO-2260)

INTERIOR VIEWS - GARAGE



PURITAN APARTMENT HOTEL (JFCO-2260) MAINTENANCE BUILDING



PURITAN APARTMENT HOTEL (JFCO-2260) MAINTENANCE BUILDING



PURITAN APARTMENT HOTEL (JFCO-2260) MAINTENANCE BUILDING & UNDERGROUND TUNNEL



PURITAN APARTMENT HOTEL (JFCO-2260)

NEWSPAPER EPHEMERA

Servitors At Your Beck and Call

You may never hire servants; but you are never without them in The Puritan.

The press of a button or the turn of a valve brings you the world's best servants in their most modern dress.

Electricity for heat, refrigeration and light, for cleaning, to carry your messages, to bring you music and entertainment, is at the disposal of all Puritan guests.

These are but a few of the services included in the rental of a Puritan apartment. Your carpets are vacuum-cleaned, your packages cared for and delivered, your gas, hot and cold water, refrigerator, cabinets, shower baths and range are provided. For those who desire it, maid service is available at moderate cost.

It is impossible to give more than The Puritan gives; it is impossible to get it for less.

Rentals \$70 to \$150 a month; slightly higher for completely furnished apartments.

THE PURITAN

1244 South Fourth Street

South 2404

Owned and Operated By the Consolidated Realty Co.

For the Model Kitchens of Louisville's Most Modern Apartments, THE PURITAN, At Fourth and Ormsby Aves.



Two carloads of handsome Kitchen Cabinets and two carloads of Combination Gas Stoves and Fireless Cookers arrived during the week, and were placed in the handsomely appointed kitchens of the Puritan Apartments. "The Puritan" is essentially different from any apartment building in Louisville. The apartments are of two, three and four combination living and dining rooms, baths, kitchen, etc. Handsome general parlors, reading rooms, reception rooms, smoking-room, sun parlor, ornamental garden, telephones, piped refrigeration, vacuum cleaning system, sanitary handling of garbage, delicatessen in building, etc., are among the many up-to-date features. In this building maid servants may be rented from the management by the hour. The owners claim that with the many up-to-date features the burden of housekeeping has been reduced to a minimum, and the servant problem solved. Great care is used in the selection of tenants. The apartments are now being rented and are open for inspection between 2 and 5 and 8 and 9 p. m., except Sundays.

QUESTIONS?

Rachel Kennedy

Historic Preservation Planner /
Architectural Historian

502-491-2411 (office)

859-806-7265 (cell)

rkennedy@palmernet.com

