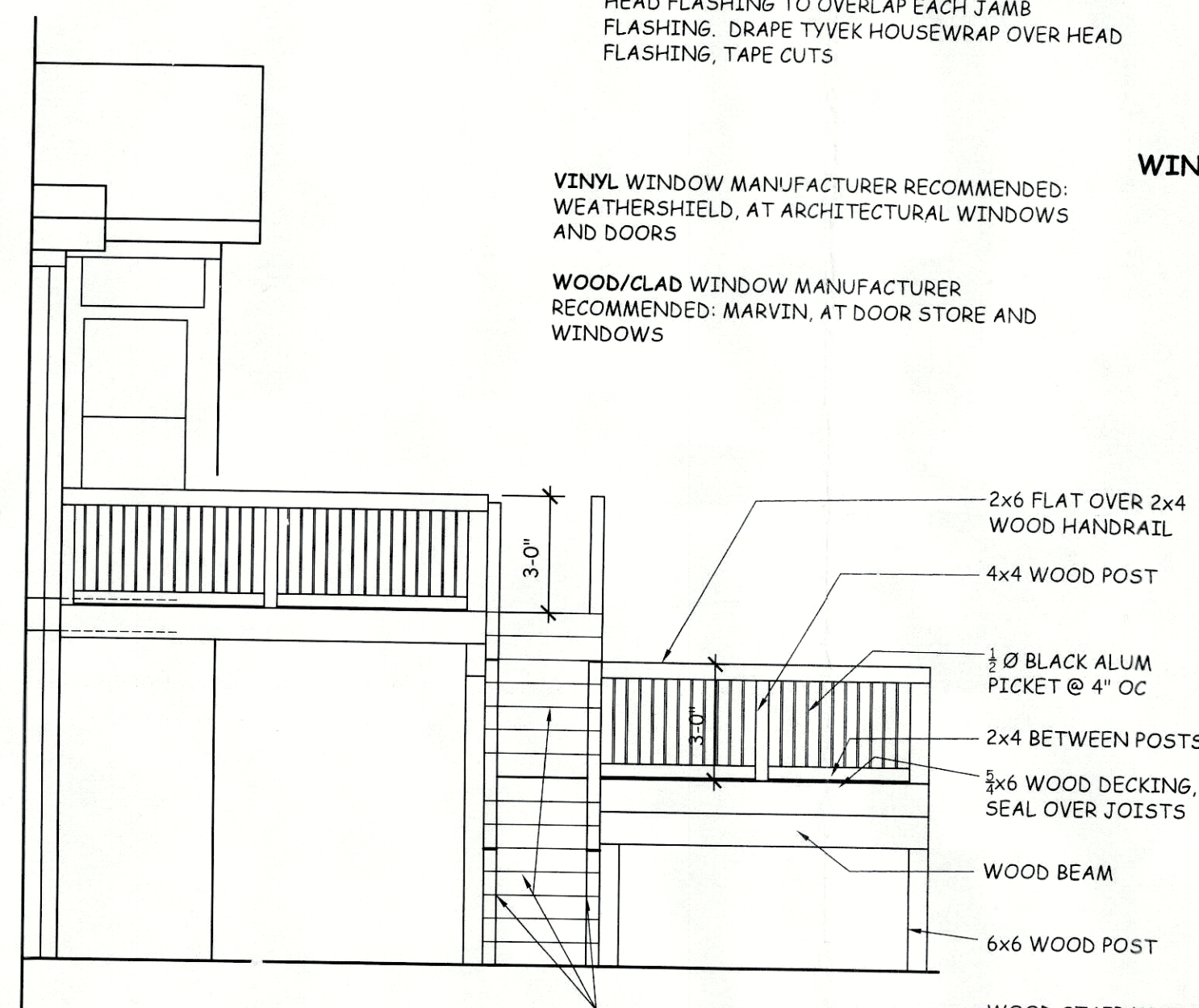
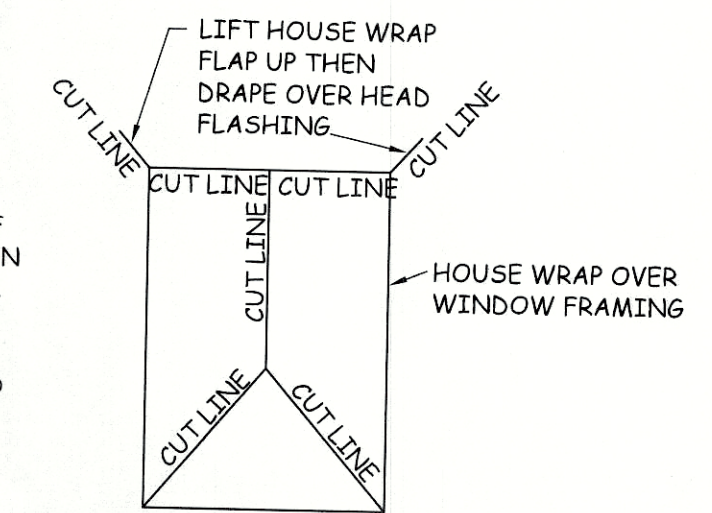


DRIVE SIDE ELEVATION WITH NO DECK
1/4"=1'-0"



PART DRIVE SIDE ELEVATION WITH DECK
1/4"=1'-0"

WINDOW FLASHING:
POSITIVE DRAINAGE: INSTALL SILL FLASHING FIRST; THEN INSTALL WINDOW WITH A BEAD OF SEALANT TO BACKSIDE OF NAILING FLANGE; THEN INSTALL EACH JAMB FLASHING TO OVERLAP SILL FLASHING; LIFT UP HOUSEWRAP THEN INSTALL HEAD FLASHING TO OVERLAP EACH JAMB FLASHING; DRAPE TYVEK HOUSEWRAP OVER HEAD FLASHING, TAPE CUTS

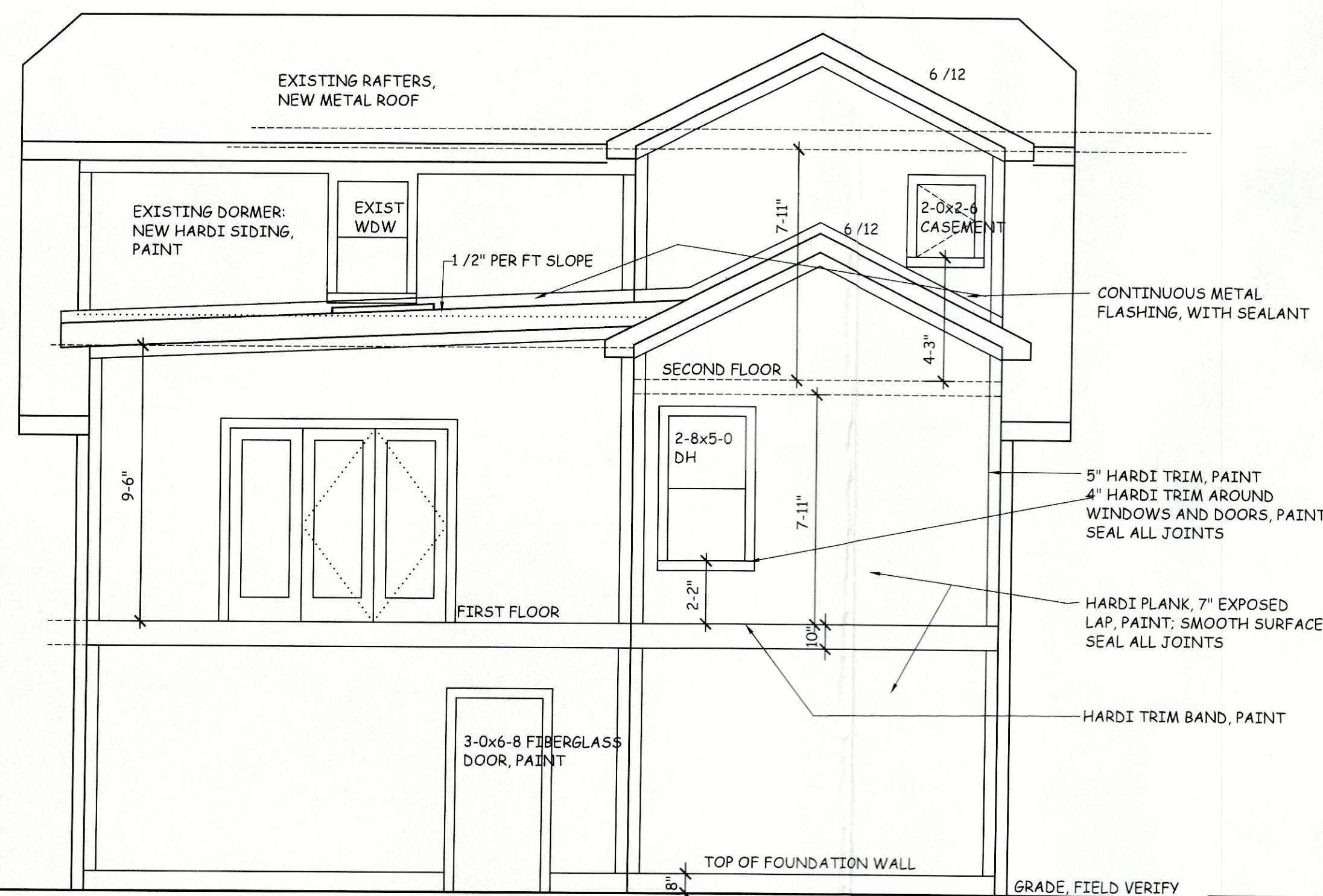


WINDOW FLASHING DETAIL

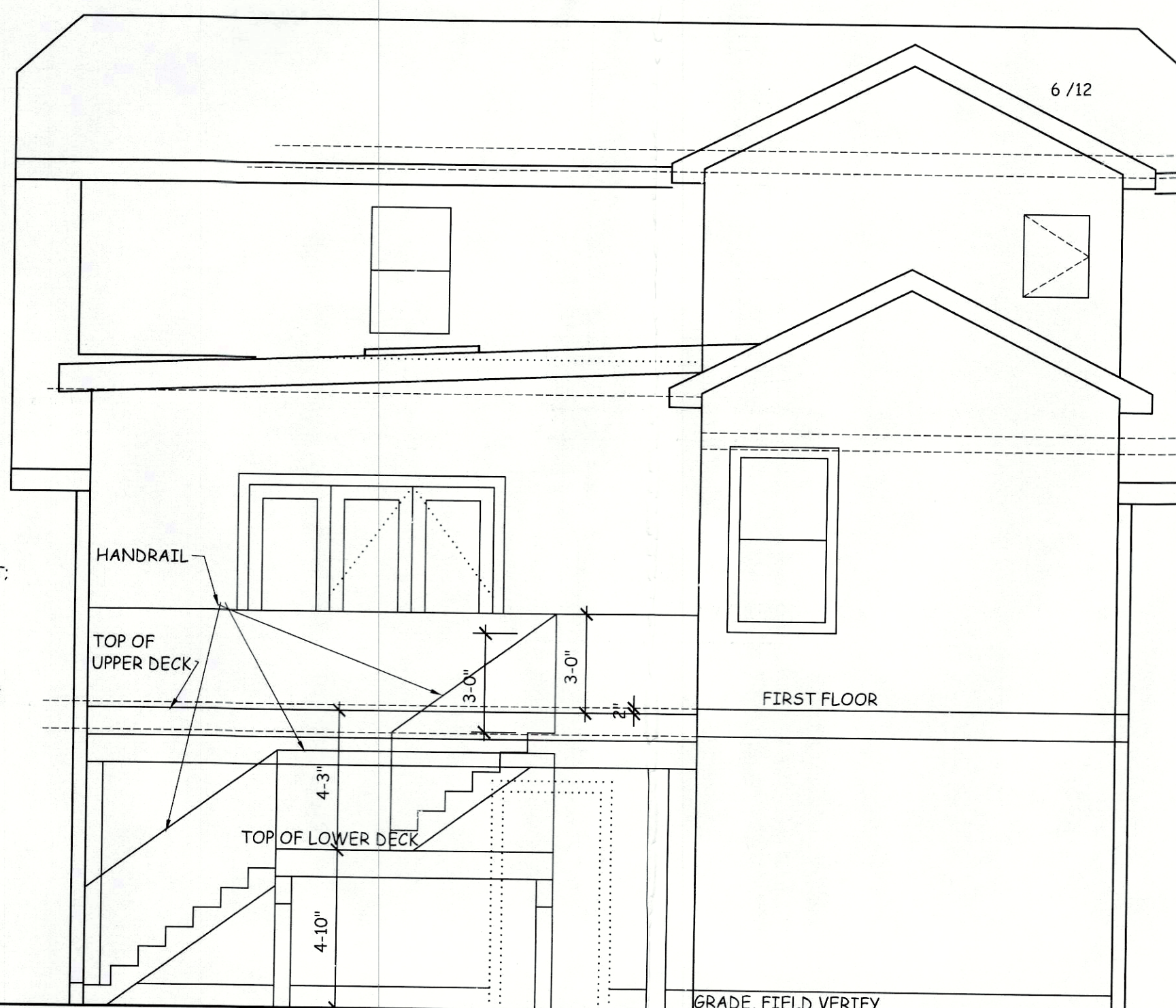
VINYL WINDOW MANUFACTURER RECOMMENDED:
WEATHERSHIELD, AT ARCHITECTURAL WINDOWS AND DOORS

WOOD/CLAD WINDOW MANUFACTURER RECOMMENDED: MARVIN, AT DOOR STORE AND WINDOWS

NOTE:
ENTIRE WOOD DECK TO BE SEALED, STAIN PER OWNERS DIRECTION

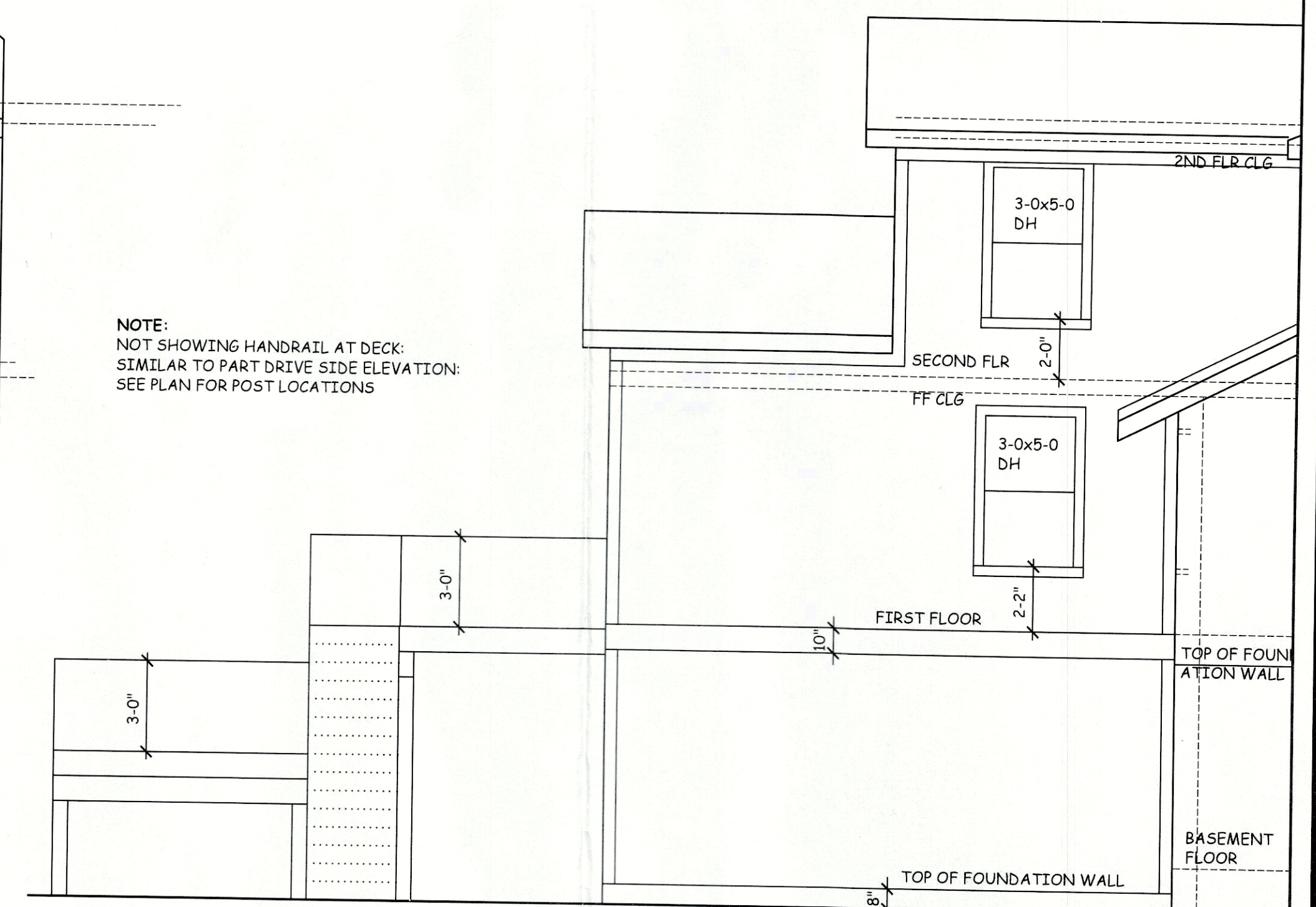


REAR ELEVATION - NO DECK
1/4"=1'-0"



REAR ELEVATION WITH SCHEMATIC DECK
1/4"=1'-0"

NOTE:
NOT SHOWING HANDRAIL AT DECK: SIMILAR TO PART DRIVE SIDE ELEVATION: SEE PLAN FOR POST LOCATIONS



SIDE ELEVATION WITH SCHEMATIC DECK
1/4"=1'-0"

Revisions:	
1	
2	
3	
4	
5	
6	
7	
8	
9	

Anne Del Prince, Architect
640 Country Club Road
(502) 893-6026

Thieneman Remodel/Addition
1846 Harvard Drive
Louisville, KY 40205

Elevations

Title:

Sheet No.:

Scale: 1/4"=1'-0"
Date: 8/25/18

A-3

RECEIVED
FEB 25 2019
PLANNING & DESIGN SERVICES