

# Department of Public Health and Wellness

## **FY20 Budget Presentation**

**June 10, 2019**

Sarah Moyer, MD, MPH  
Director



# Mission

Achieve health equity and improve the health and well-being of all Louisville residents and visitors.

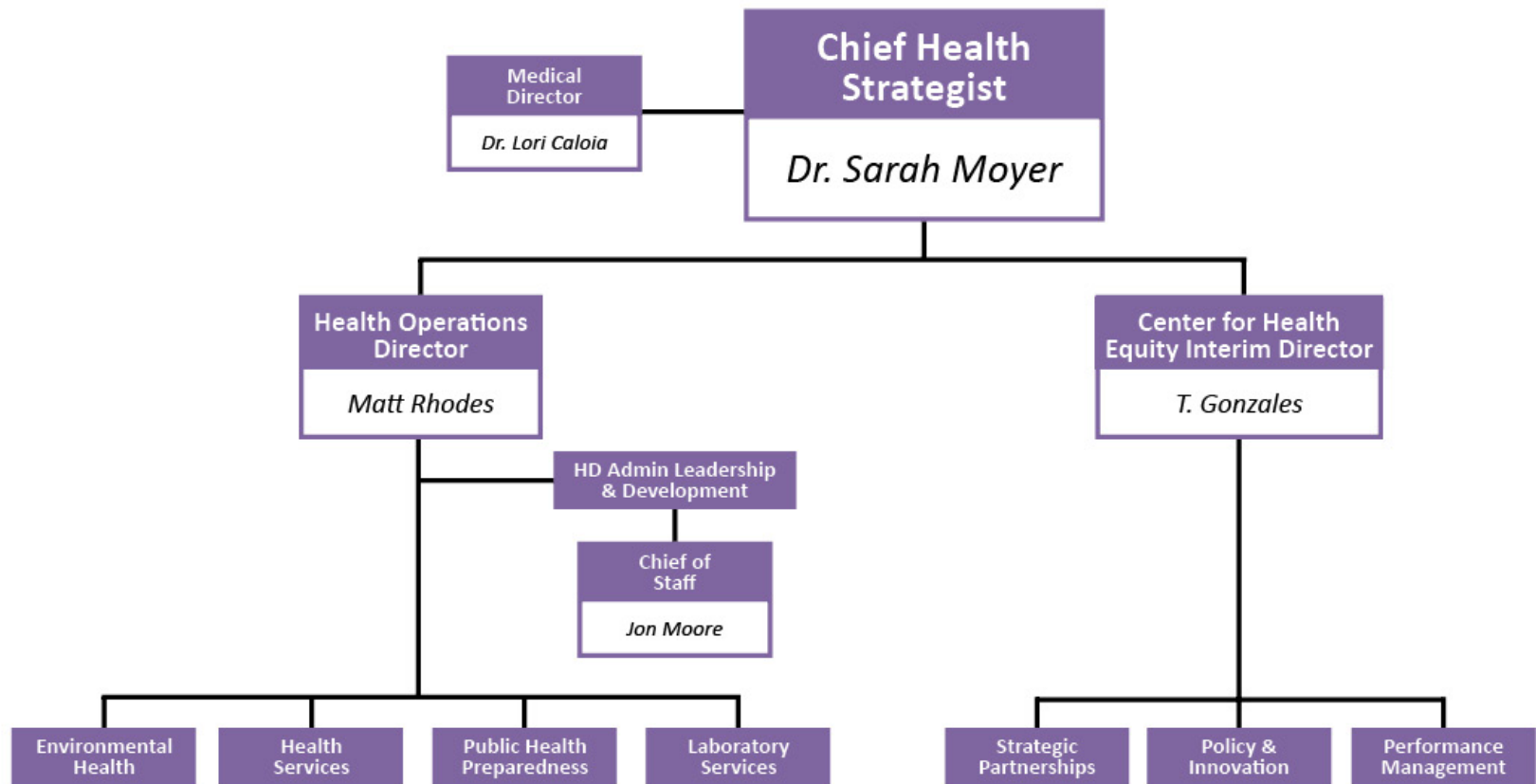
# Vision

A healthy Louisville where everyone and every community thrives.

# Values

Collaboration,  
Innovation, Grit,  
Quality, Integrity

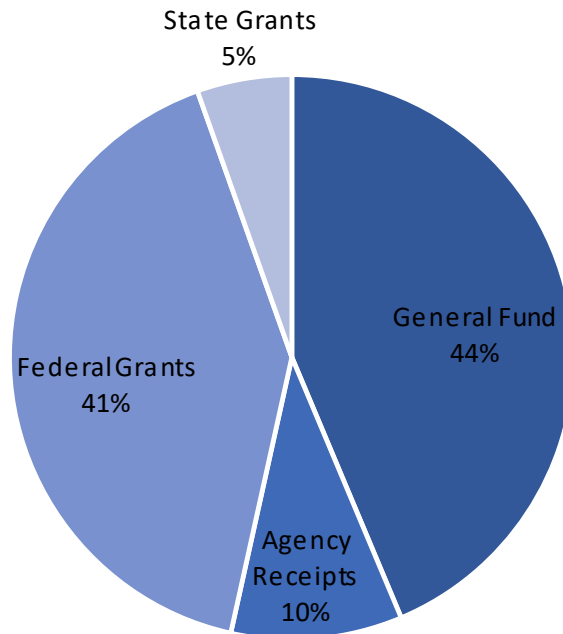
# Public Health and Wellness Overview



DEPARTMENT OF  
PUBLIC HEALTH  
AND WELLNESS

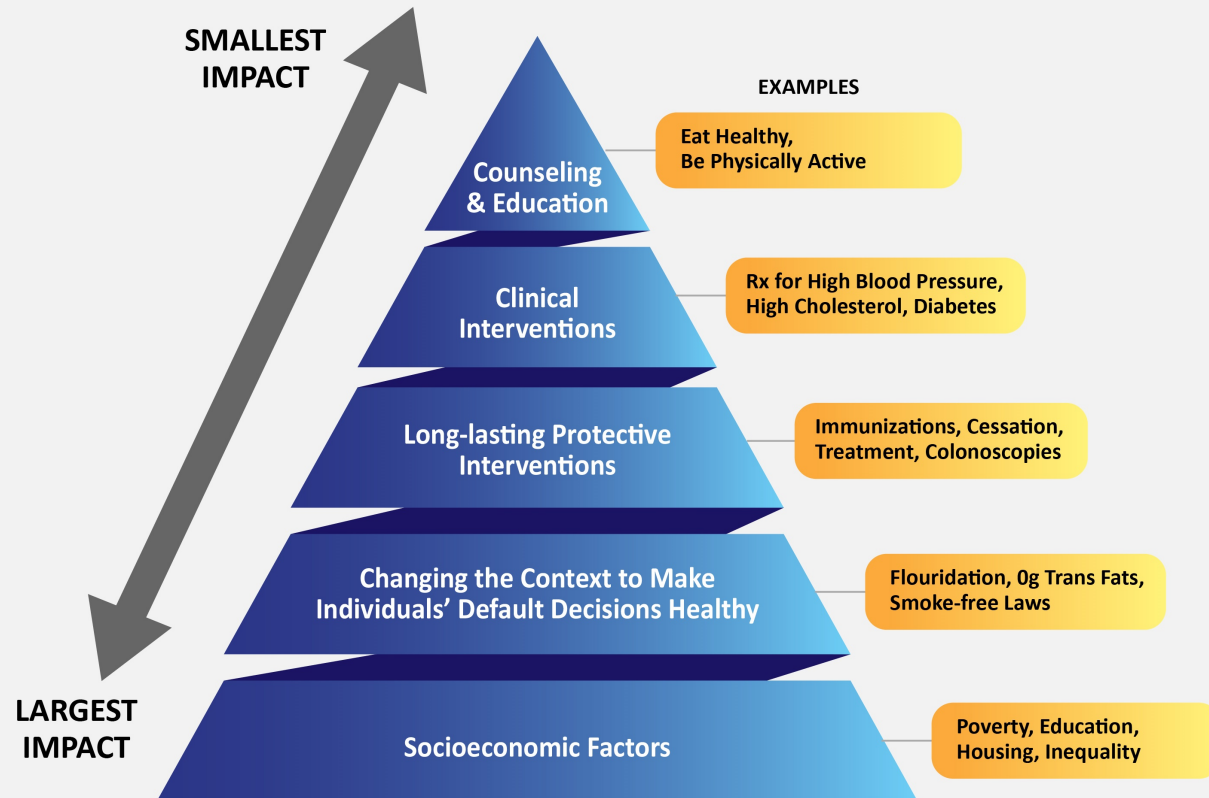
# FY20 Funding Source Breakdown

FY20 Funding by Sources (without External Contracts)



Total Budget for public health programs: \$19,772,500

# Health Impact Pyramid



# Public Health Modernization

## Public Health 1.0

Tremendous growth of knowledge and tools

Uneven access to care and public health



## Public Health 2.0

Systematic development of public health gov agency capacity across the U.S.

Focus limited to traditional public health agency programs



## Public Health 3.0

Engage multiple sectors and community partners to generate collective impact

Improve social determinants of health





The diagram features a stylized tree with a thick brown trunk and a large, rounded green canopy. The ground is depicted in two layers: a top layer of green grass and a bottom layer of brown soil with visible roots. A long, straight black arrow points upwards from the 'ROOT CAUSES' level to the 'HEALTH OUTCOMES' level. A shorter black arrow points upwards from the 'SYSTEMS OF POWER' level to the 'ROOT CAUSES' level. The text 'HEALTH OUTCOMES' is in a white box at the top, 'ROOT CAUSES' is in the middle, and 'SYSTEMS OF POWER' is in a white box at the bottom.

**HEALTH OUTCOMES**

**ROOT CAUSES**

**SYSTEMS OF POWER**

## **PUBLIC POLICY**

*national, state, local law*

Connect with your elected officials!

## **COMMUNITY**

*relationships among organizations*

How can we link resources together?

## **ORGANIZATIONAL**

*organizations, social institutions*

Change where you work, learn, pray, and play.

## **INTERPERSONAL**

*family, friends, social networks*

Support each other!

## **INDIVIDUAL**

*knowledge, attitudes, skills*

What you can do!

- **Environmental Health:** Expand and enforce Louisville's smoke-free ordinance
- **Health Equity Reports in 2011, 2014, and 2017**
- **Health Equity:** Health Impact Assessments on Pregnant Workers' Rights, Impacts of Incarcerated Parents on Children's Health
- **Substance Use Disorder Plan:** guidelines for recovery housing and advocating for expungement reform

- **Emergency Preparedness:** Hepatitis A outbreak coordinated response
- **Health Equity:** Community Health Improvement Planning for Healthy Louisville 2025
- **Health Equity:** Our Money Our Voice (participatory budgeting)
- **Environmental Quality:** mosquito fogging, restaurant inspections
- **Louisville Health Advisory Board, United Community**

- **Health Equity:** advancing racial equity trainings for LMG and partners
- **Healthy Babies Louisville:** practice changes by hospital and pediatric partners
- **Freedom from Smoking:** training partner organizations to provide evidence-based smoking cessation classes to employees and patients

- **Suicide Prevention:** Promoting QPR training across Louisville
- **Substance Use Disorder:** Naloxone distribution and training
- **Healthy Start & WIC:** Cribs for Kids, breastfeeding classes

- **Immunizations:** 32,608 vaccines since January 2017
- **Tobacco cessation classes and promoting the KY QUIT line**
- **Specialty Clinic:** Promote safer sex practices and provide STI testing



# Strategic Plan Themes

Cultivate  
professional  
excellence

Enhance  
timely and  
actionable  
data

Provide bold  
public  
health  
leadership

Strengthen  
strategic  
engagement

Ensure  
flexible and  
sustainable  
funding

# Center for Health Equity

## Policy and Innovation

- Health Equity Report
- Health in All Policies
- Academic Health Department
- Health Impact Assessments
- Racial Equity Impact Assessments
- Health Equity Training
- Senior Medicare Patrol
- Tobacco Prevention and Cessation
- Participatory Budgeting

## Strategic Partnerships

- Substance Use Disorder Plan
- Healthy Babies Louisville
- Maternal and Child Health
- LGBT Health Equity Initiatives
- Asthma Initiative
- Diabetes Programming
- Suicide Prevention and Awareness
- Louisville Health Advisory Board
- United Community

## Performance Management

- Public Health Accreditation
- Community Health Needs Assessment
- Community Health Improvement Plan(Healthy Louisville 2025)
- Population Health Surveillance and Research
- Strategic Planning
- Quality Improvement
- Performance Management
- Informatics and Data Management
- Data Requests
- Program Evaluation
- Biostatistics

# Health Operations

## Environmental Health

- Food Safety and Protection
- Public Facilities
- Onsite Sewage
- Waste water
- Mosquito Control
- Hazmat Response
- Childhood Lead Poisoning Prevention

## Emergency Preparedness

- Public Health Preparedness
- Hospital Preparedness
- Cities Readiness Initiative
- Medical Reserve Corps

## Health Services

- Communicable Disease Office
- TB Clinic
- Specialty Clinic
- MORE Center
- Syringe Exchange Program
- Cancer Screening
- Immunizations
- HIV Prevention
- HIV Surveillance
- WIC Program
- Healthy Start

## Laboratory

- STD testing
- Urine drug screen
- Tuberculosis testing
- Mosquito testing
- Water testing
- Blood lead testing

## Administration

- Administration
- Human Resources
- Communications
- IT
- Grants

# Budget Cut Impacts

Mosquito Control – priority given to areas with disease prevalence, resource needs, population density.

Specialty Clinic – Decrease in providers means a delay in diagnosis and a delay in treatment

Float Nurse, CHE positions – reduced services, clinic closures for unexpected absences, delayed release of reports such as Health Equity Report, delay in providing requested data and reports

Environmental Health Specialist – 1,000 fewer food safety inspection services per year, increased wait times for restaurant openings and complaint investigations, increased risk of foodborne illness

# CORE PUBLIC HEALTH

## FOUNDATIONAL PUBLIC HEALTH

Five focus areas, which includes statutorily and regulatorily defined services:

1. Population Health
2. Enforcement of Regulation
3. Emergency Preparedness & Response
4. Communicable disease control
5. Administrative and organizational infrastructure

Community Health Assessment

## WIC

## HANDS

## HARM REDUCTION & SUD

## Local Public Health Priorities

# FOUNDATIONAL PUBLIC HEALTH CROSSWALK

1. Population Health
2. Enforcement of Regulation
3. Emergency Preparedness & Response
4. Communicable Disease Control
5. Administrative and Organizational Infrastructure

Center for  
Health Equity

Environmental  
Health and Lab  
Services

Emergency  
Preparedness

Health Services  
and Lab Services

Administration

WIC

HANDS

Harm Reduction  
and Substance  
Use Disorder



# Questions

For information about **substance use disorder**, visit [louisvilleky.gov/health](http://louisvilleky.gov/health)

To view the **Community Health Needs Assessment**, visit [healthylouisville2025.com](http://healthylouisville2025.com)

To schedule an appointment for Women, Infants, and Children (**WIC**) **services**, call 502-574-5978

Get your measles vaccine!



Department of  
**PUBLIC HEALTH AND WELLNESS**

[www.louisvilleky.gov/health](http://www.louisvilleky.gov/health)