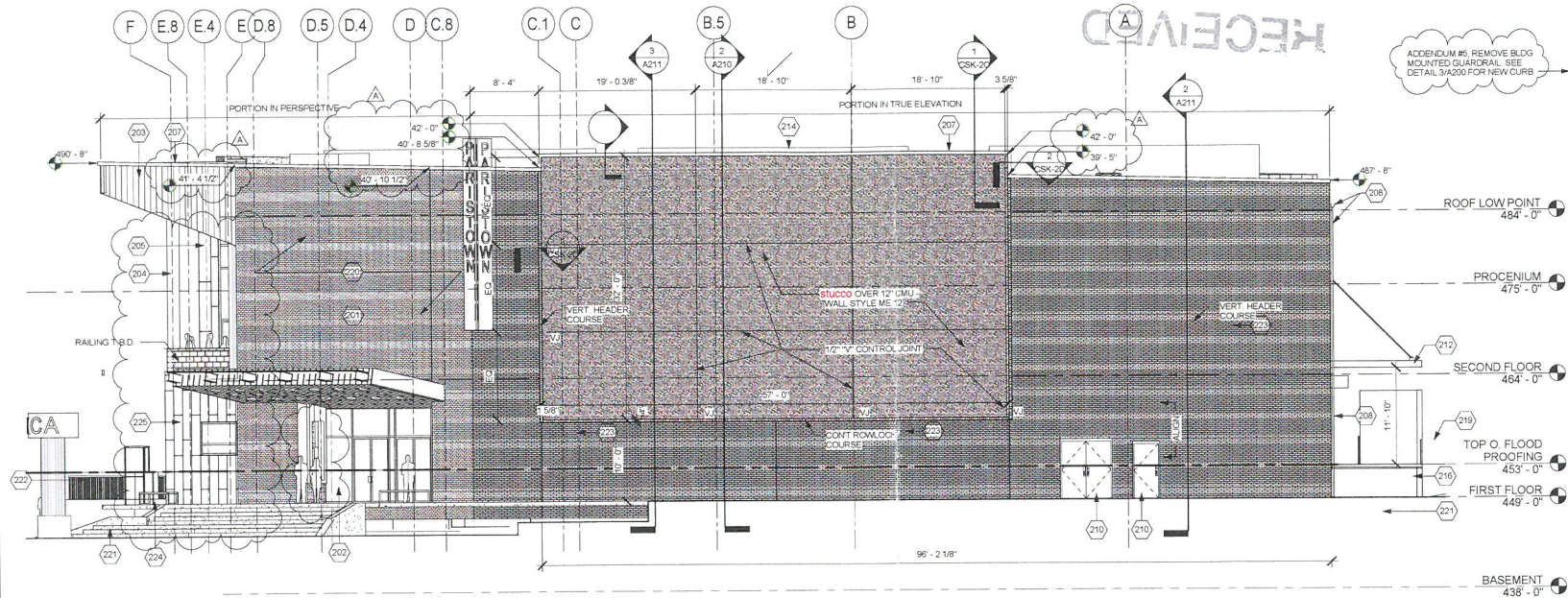


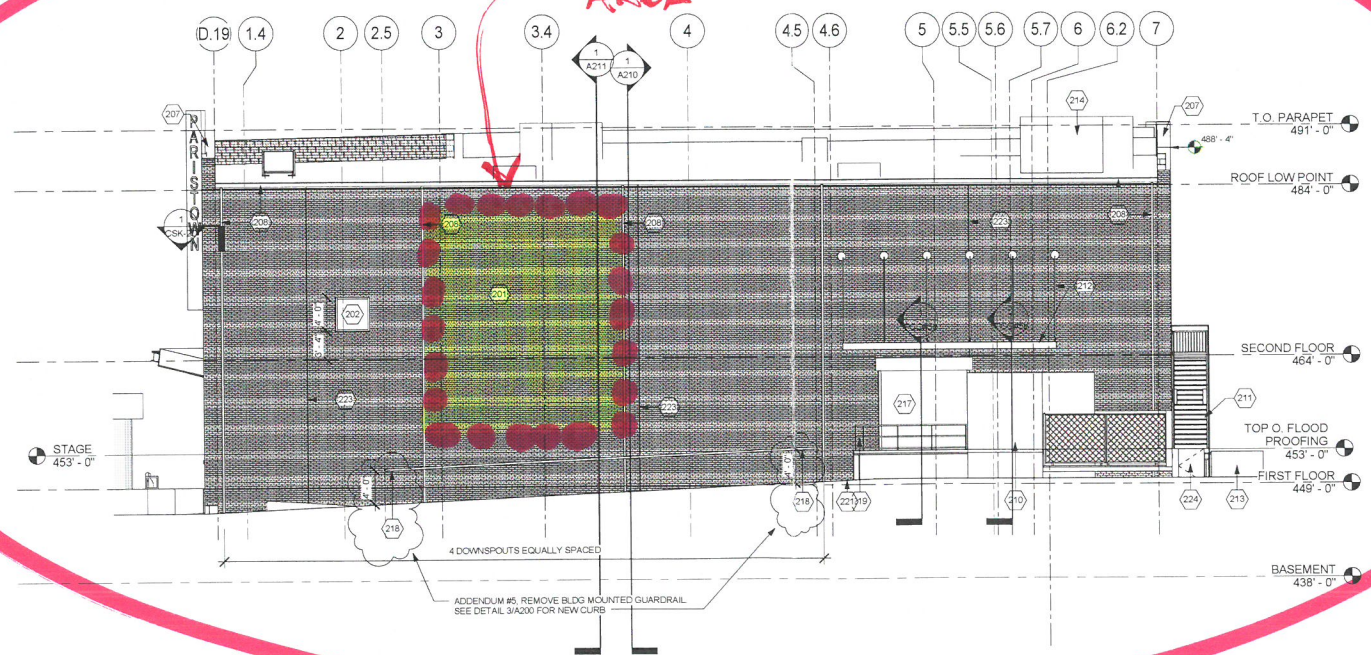
19-VA RANCE-0017

RECEIVED  
JUL 02 2019  
PLANNING &  
DESIGN SERVICES

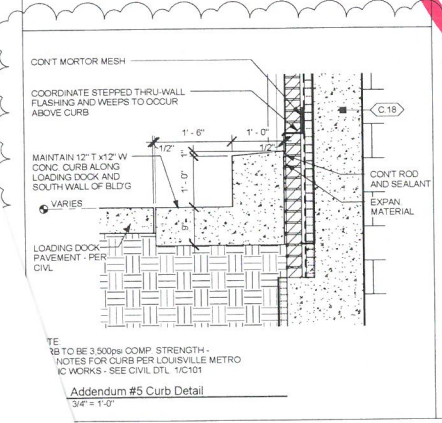


Keynotes	
Key	Description
201	Utility brick veneer.
202	Curtainwall and storefront systems. See A201 for all frame and glazing information.
203	Metal paneling B.O.D. - Reveal Panel for Walls, Fascia & Soffits as produced by Pac-Clad.
204	Metal column cover B.O.D. - Pac 1000C cover as produced by Pac-Clad.
205	Translucent single panel wall system B.O.D. - Pentaglass panel cladding as produced by CPI Daylighting.
207	Pre-finished aluminum cap.
208	Pre-finished aluminum gutter and downspout. See roof plan for downspout spacing. See civil for connection to storm drain.
210	Exterior door - see schedule. Paint door and frame to match adjacent material U.N.O.
211	Exterior gable, painted stair, columns and railing w/ expanded grate treads and landings.
212	Prefabricated aluminum canopy and tension rods B.O.D. Super Lumidex as produced by Wipac Industries. Finish to be manufacturer's standard finish color. All structural considerations/calculations to be provided by manufacturer's in-house engineer.
213	Exterior Equipment (transformer and generator) see electrical drawings. Field verify to locate 2' from exterior entrance (equipment to omit enclosure) Provide the appropriate concrete pad for each piece of equipment.
214	Roof top equipment - see MEP drawings.
215	Concrete loading dock - see Structural drawings.
217	Loading dock door - see schedule.
218	Vehicle guard rail mounted to building. Mount 4' - 0" above grade.
219	Galvanized, painted safety railing.
220	Potential location for exterior, building mounted screen. Structural support or electrical infrastructure not shown, N.I.C. Decision pending from owner.
221	See landscape drawings, grading plan, 1:10' for all spot elevations along building perimeter & hardscape surrounding building. Stairs, ramps, etc.
222	Aluminum guardrail w/ mesh panels.
223	Masonry control joints.
224	Exterior exit gate - see door schedule.
225	Fiber cement board cladding. Nohia wall panel - B.O.D.

2 WEST ELEVATION  
1/8" = 1'-0"



1 SOUTH ELEVATION  
1/8" = 1'-0"



Kentucky Center  
for the Arts  
Paristown - KCA

100% CD's

Brent Street  
Louisville, KY 40204

KEY PLAN

N

K NORMAN BERRY  
ASSOCIATES  
ARCHITECTS

DATE	DESCRIPTION
09/27/18	PARAPET WALL HEIGHTS
03/05/18	PCO #2
01/15/18	ADDENDUM #5
10/27/17	100% Set: Permit Submittal + Cost Estimate
09/29/17	90% Review Set
08/31/17	60% Review Set
08/04/17	30% Review Set

Design Architect:  
WHY Architecture  
9520 Jefferson Blvd. Studio C  
Culver City, CA 90232  
310.839.5106

Architect of Record:  
K. NORMAN BERRY  
ASSOCIATES ARCHITECTS PLLC  
815 W. Market Street  
Louisville, KY 40202  
502.582.2500

Engineer:  
KERR-GREULICH ENGINEERS, INC.  
1534 Ormsby Station Court  
Louisville, KY 40223  
502.426.9457

Structural Engineer:  
Brown + Kubican, PSC  
8900 Greenway Commons Place  
Louisville, KY  
502.749.2061

Civil Engineer:  
SABAK, WILSON & LINGO, INC.  
608 S. Third Street  
Louisville, KY 40202  
502.584.6271

Landscape Architect:  
Booker Design Collaborative, LLC  
815 West Market St. Suite 302  
Louisville, KY 40202  
502.795.7788

Sheet Title:  
Elevations

Project Number: 14.0080

Drawn By: bc

Approved By: CT

Date: 10/27/2017

Revisions:  
• Date 1 Revision 1

10/27/2017 100% CD's

A200

9/27/2018 12:25:18 PM