



**FLAVORMAN**  
the beverage architects



**MOONSHINE**  
UNIVERSITY

809 South 8th Street,  
Louisville, KY 40203  
(502) 266-7377

Flavorman is a custom beverage development company developing flavor profiles across all beverage categories. We were founded by David Dafoe in 1992 in a one room office in Louisville Kentucky. A year later we expanded to 4,000 square feet, employing three people, and developing flavor combinations for a handful of customers.

By 1998 we had out grown our laboratory and moved to a larger facility on Electron drive.

Shortly after our move, driven by a growing customer base and an expanding beverage portfolio, our staff had expanded to ten people, requiring us to plan for expansion again. By this time our customer base had also grown geographically to include South America, the Caribbean and all of North America

In 2005 we made a bold move to purchase and renovate our current headquarters at 809 South 8<sup>th</sup> Street. With the additional 20,000 square feet we were able to install world class laboratory facilities, product blending tanks, bottling equipment, test kitchen, and office space for our then 20 employees.

In 2008 we purchased a neighboring auto-garage at 801 South 8<sup>th</sup> Street. Recognizing the expanding craft distilling segment and its lack of industry knowledge, we renovated the new property and started Moonshine University, the number one distilling school in the nation. This allowed us to provide an educational platform for the spirits industry, teaching new and established distillers and rectifiers from all over the world the craft of distillation. To date we have hosted students from 48 states and 27 countries. It also created four additional full-time positions.

In 2018 we purchased and renovated 827 S 8<sup>th</sup> Street to create the business development and marketing hub for Flavorman and MoonU.

These past 20 years have been challenging but rewarding. Our business and reputation continues to grow. With over 30 employees and a global customer base, our next expansion, currently in the design phase, is the development of a 22,500 square foot building for new flavor development and finished product manufacturing. This building, when fully occupied, will create 10-15 new jobs and allow our company to continue to innovate on a global scale.

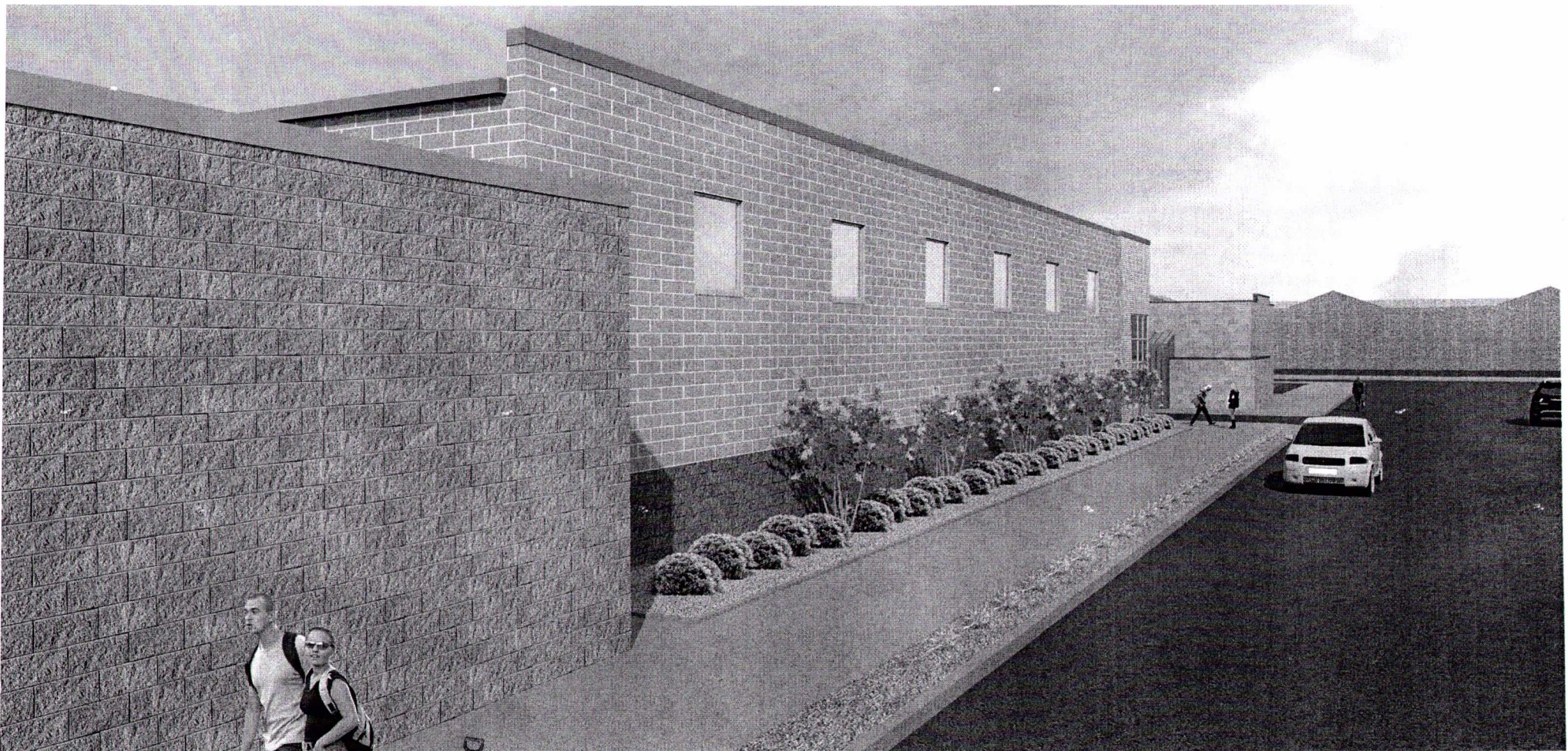
RECEIVED  
JAN 10 2019  
PLANNING &  
DESIGN SERVICES

THE BEVERAGE CAMPUS

[www.flavorman.com](http://www.flavorman.com)  
[www.moonshineuniversity.com](http://www.moonshineuniversity.com)

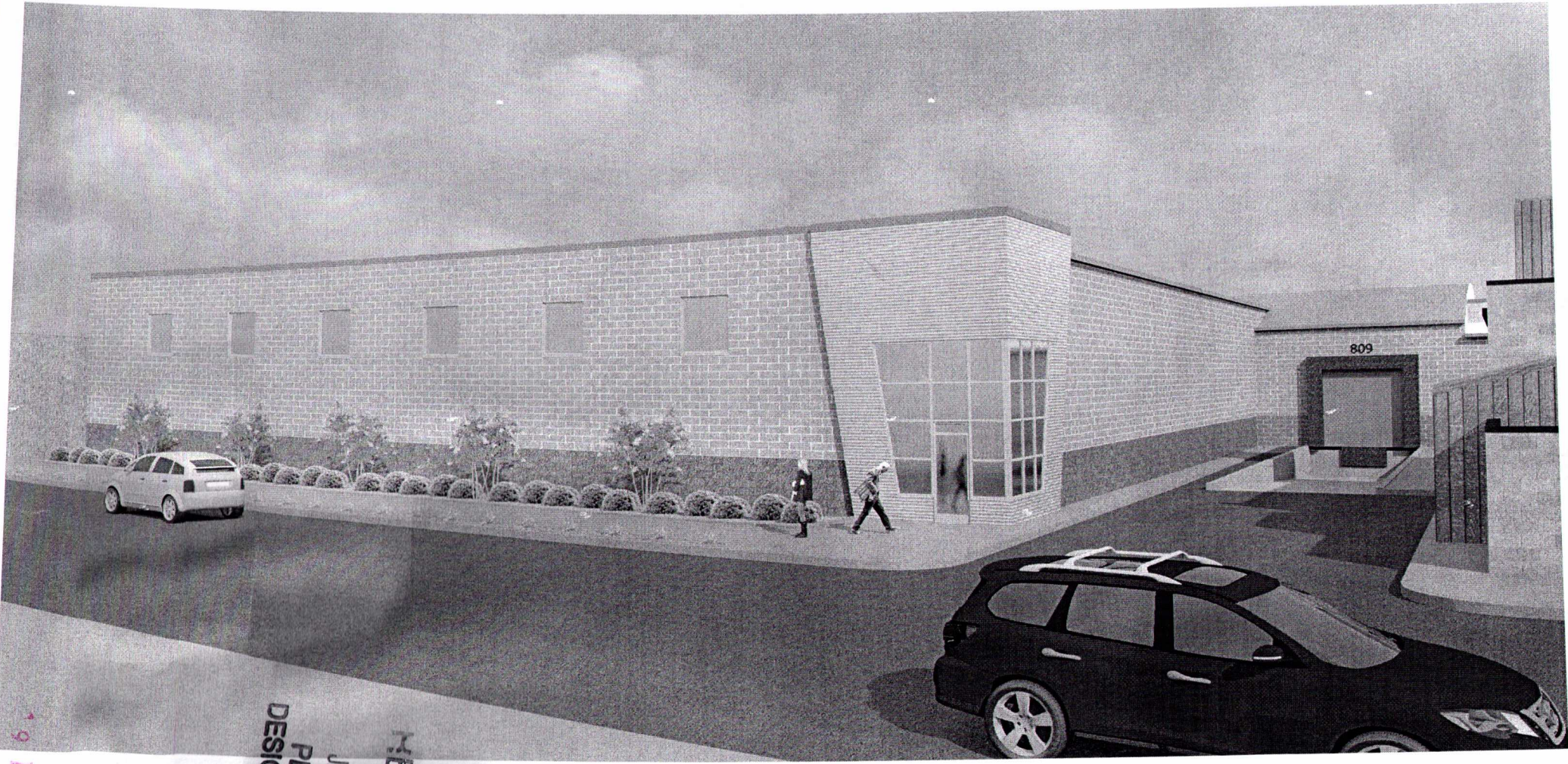
19 DEVPLAN 1006





RECEIVED  
JAN 10 2019  
PLANNING &  
DESIGN SERVICES

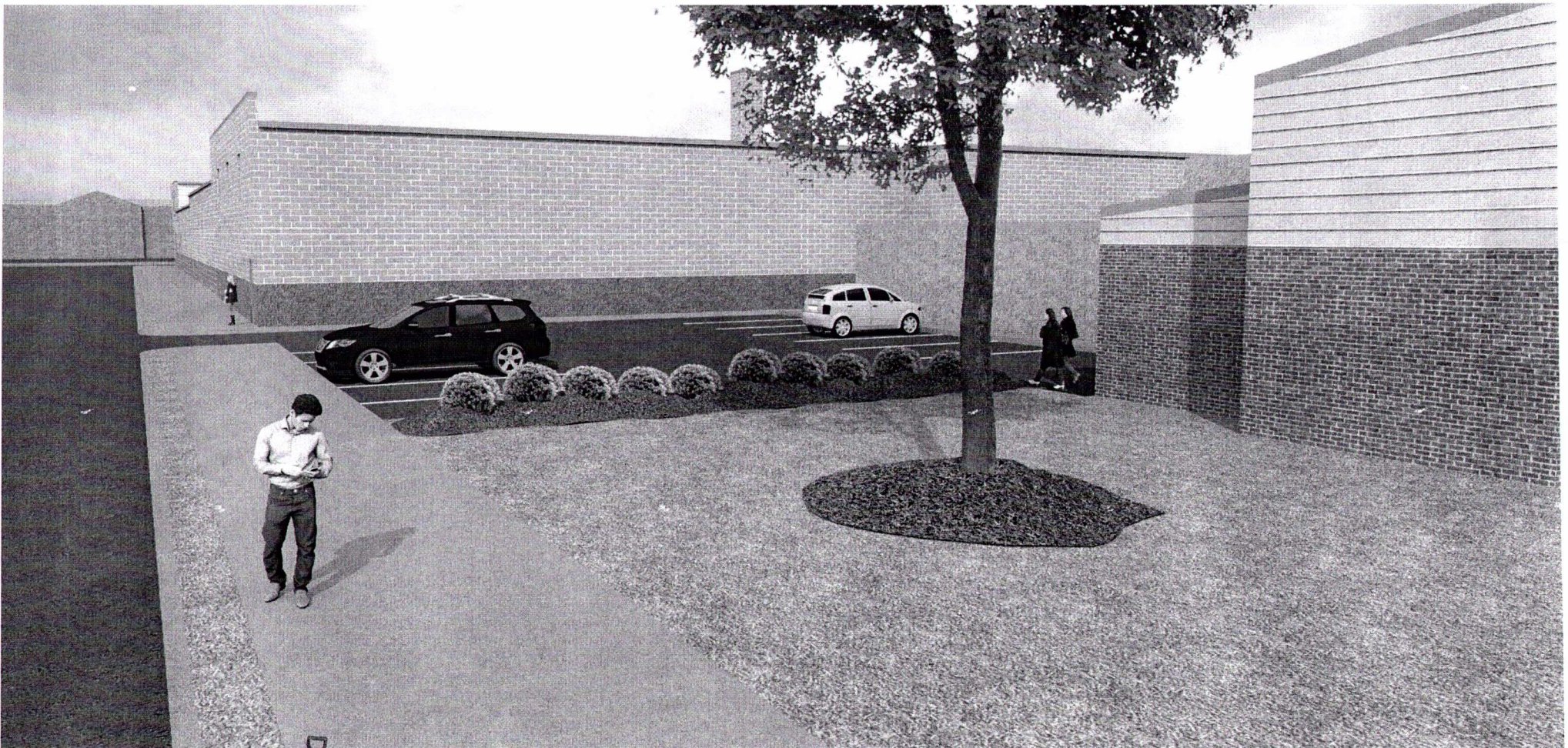




RECEIVED  
JAN 10 2019  
PLANNING &  
DESIGN SERVICES

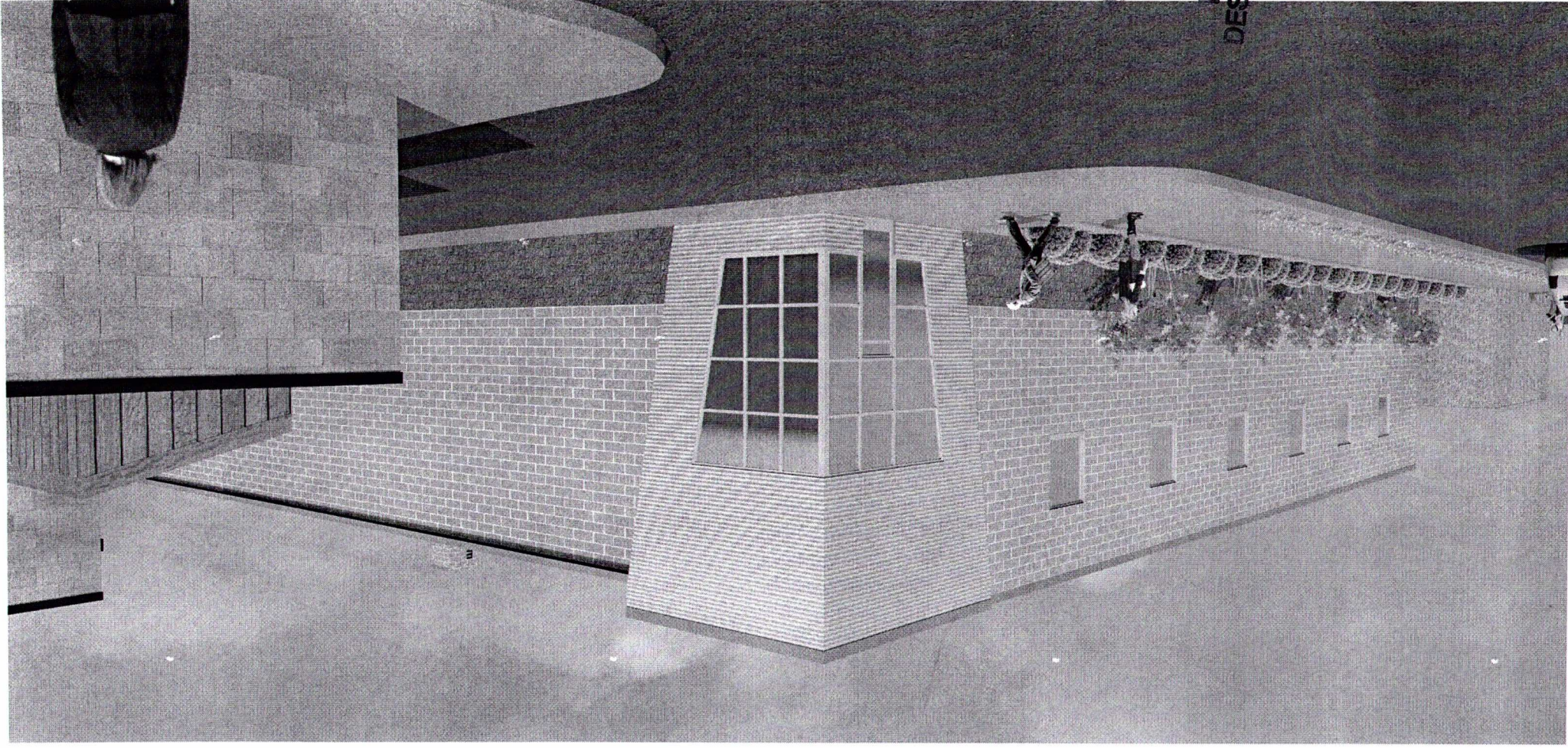
19 DEVIPLAN 1006





RECEIVED  
JAN 10 2019  
PLANNING &  
DESIGN SERVICES





RECEIVED

JAN 10 2019

PLANNING &  
DESIGN SERVICES

19 DEVPLAN 10 00