

Development Review Committee Staff Report

September 4, 2019



Case No:	19-LANDSCAPE-0023
Project Name:	The Village at Floyds Fork
Location:	15905 Aiken Road
Owner:	Stapleton Development, LLC
Representative:	Mindel, Scott and Associates
Jurisdiction:	Louisville Metro
Council District:	19 – Anthony Piagentini
Case Manager:	Jay Lockett, AICP, Planner I

REQUEST

- **Enhanced Landscape Plan** per Condition of Approval #16 from 16SUBDIV1011

CASE SUMMARY/BACKGROUND

The applicant is requesting approval of an Enhanced Landscape Plan. Condition of Approval #16 from the approval of 16SUBDIV1011 states: "The landscape plan shall be approved by a Committee of the Planning Commission prior to issuance of a site disturbance permit." The primary purpose of this plan is to review the landscaping around proposed floodplain compensation basins and the existing pump station. The property is located within the Floyds Fork Development Review Overlay District.

STAFF FINDING

The plan is compliant with the Land Development Code.

TECHNICAL REVIEW

There are no outstanding technical issues associated with this proposal.

INTERESTED PARTY COMMENTS

Staff has received no comments from interested parties concerning this request.

REQUIRED ACTIONS

APPROVE or **DENY** the Enhanced Landscape Plan

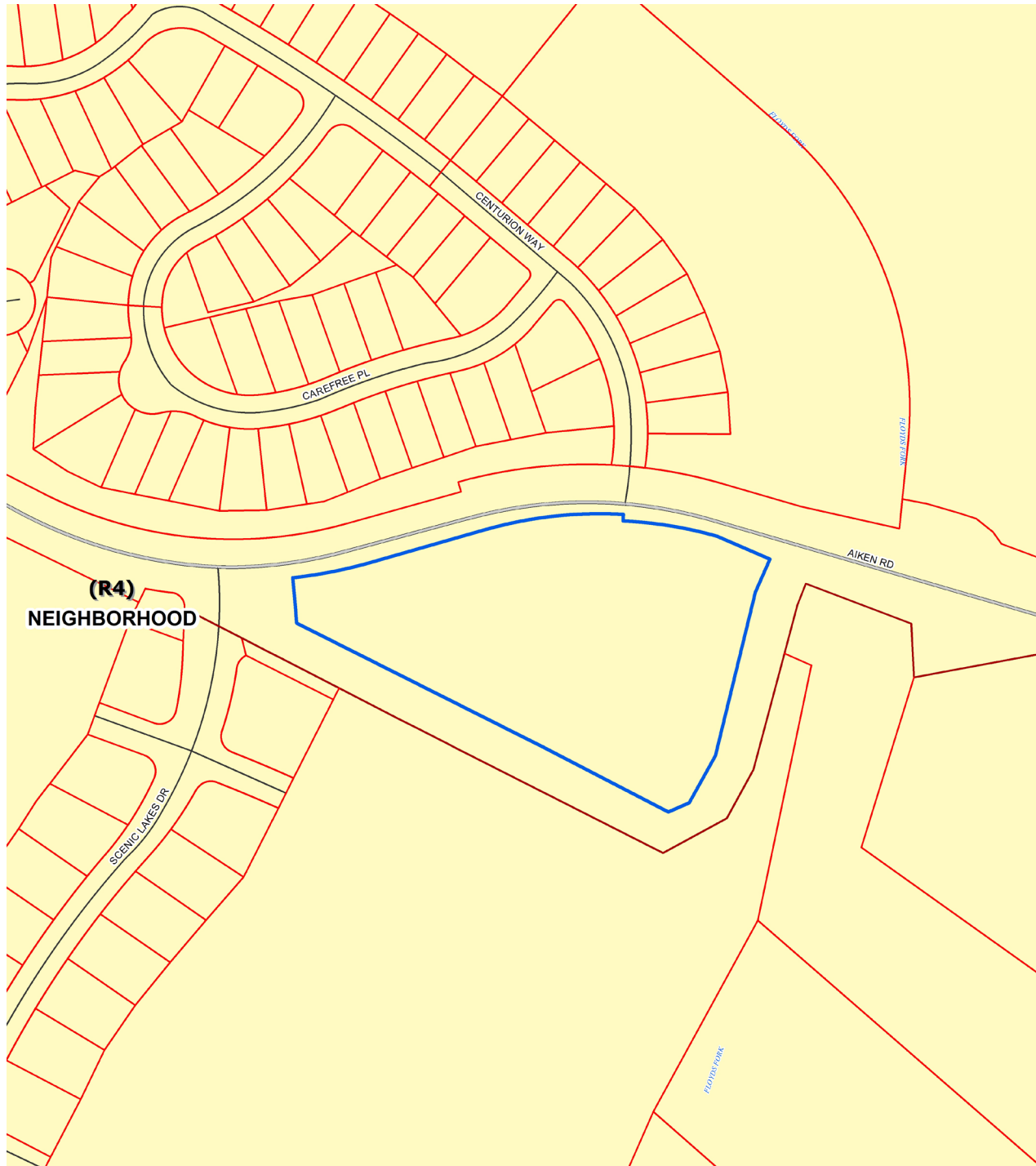
NOTIFICATION

Date	Purpose of Notice	Recipients
8-20-19	Hearing before DRC	1 st tier adjoining property owners Speakers at Planning Commission public hearing Registered Neighborhood Groups in Council District 19

ATTACHMENTS

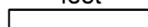
1. Zoning Map
2. Aerial Photograph

1. Zoning Map



19-LANDSCAPE-0023

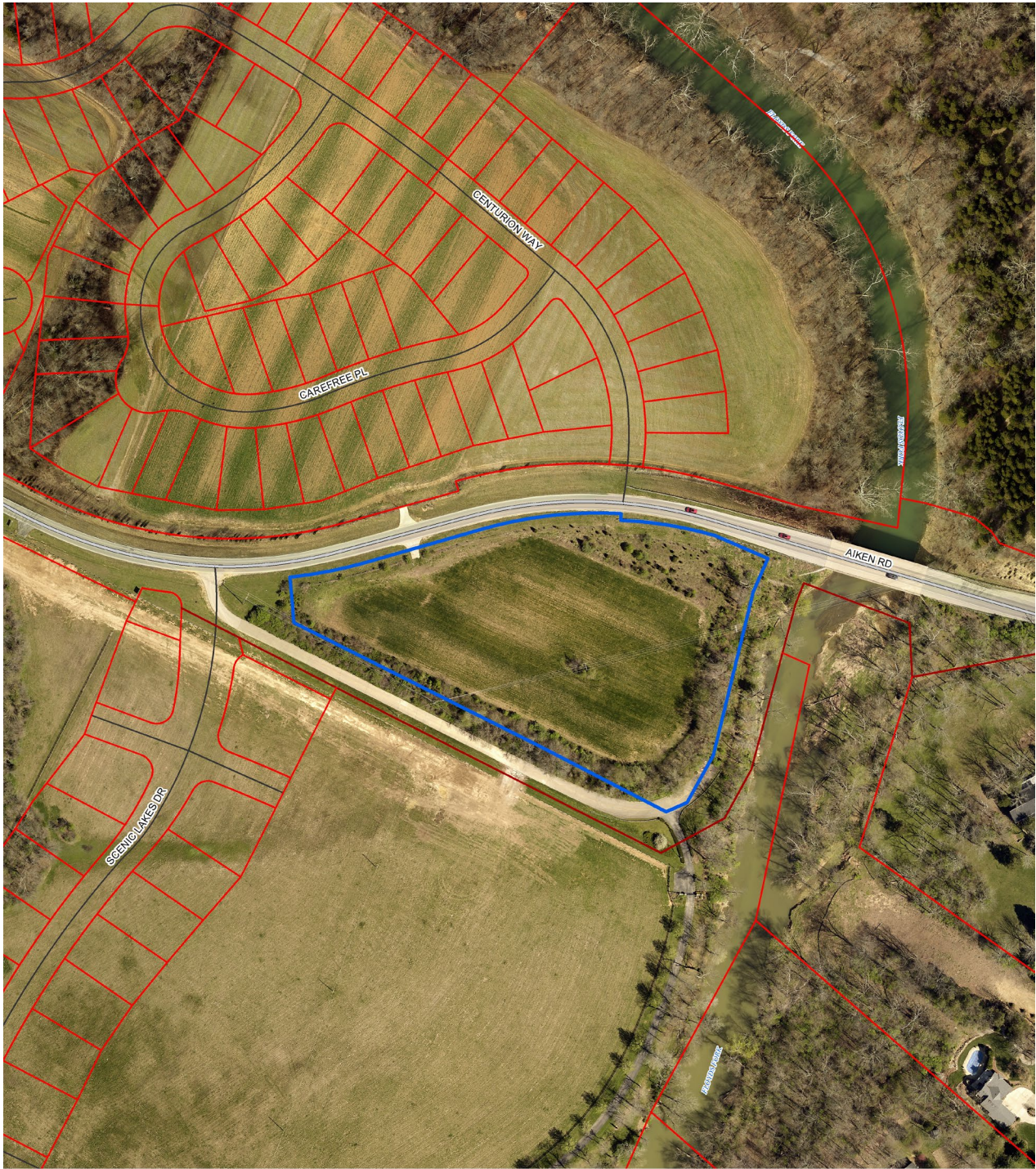
feet



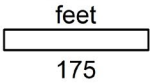
175

Copyright (c) 2017, LOUISVILLE AND JEFFERSON
COUNTY METROPOLITAN SEWER DISTRICT (MSD),
LOUISVILLE WATER COMPANY (LWC),
LOUISVILLE METRO GOVERNMENT and
JEFFERSON COUNTY PROPERTY VALUATION
ADMINISTRATOR (PVA). All Rights Reserved.

2. Aerial Photograph



19-LANDSCAPE-0023



Copyright (c) 2017, LOUISVILLE AND JEFFERSON
COUNTY METROPOLITAN SEWER DISTRICT (MSD),
LOUISVILLE WATER COMPANY (LWC),
LOUISVILLE METRO GOVERNMENT and
JEFFERSON COUNTY PROPERTY VALUATION
ADMINISTRATOR (PVA). All Rights Reserved.