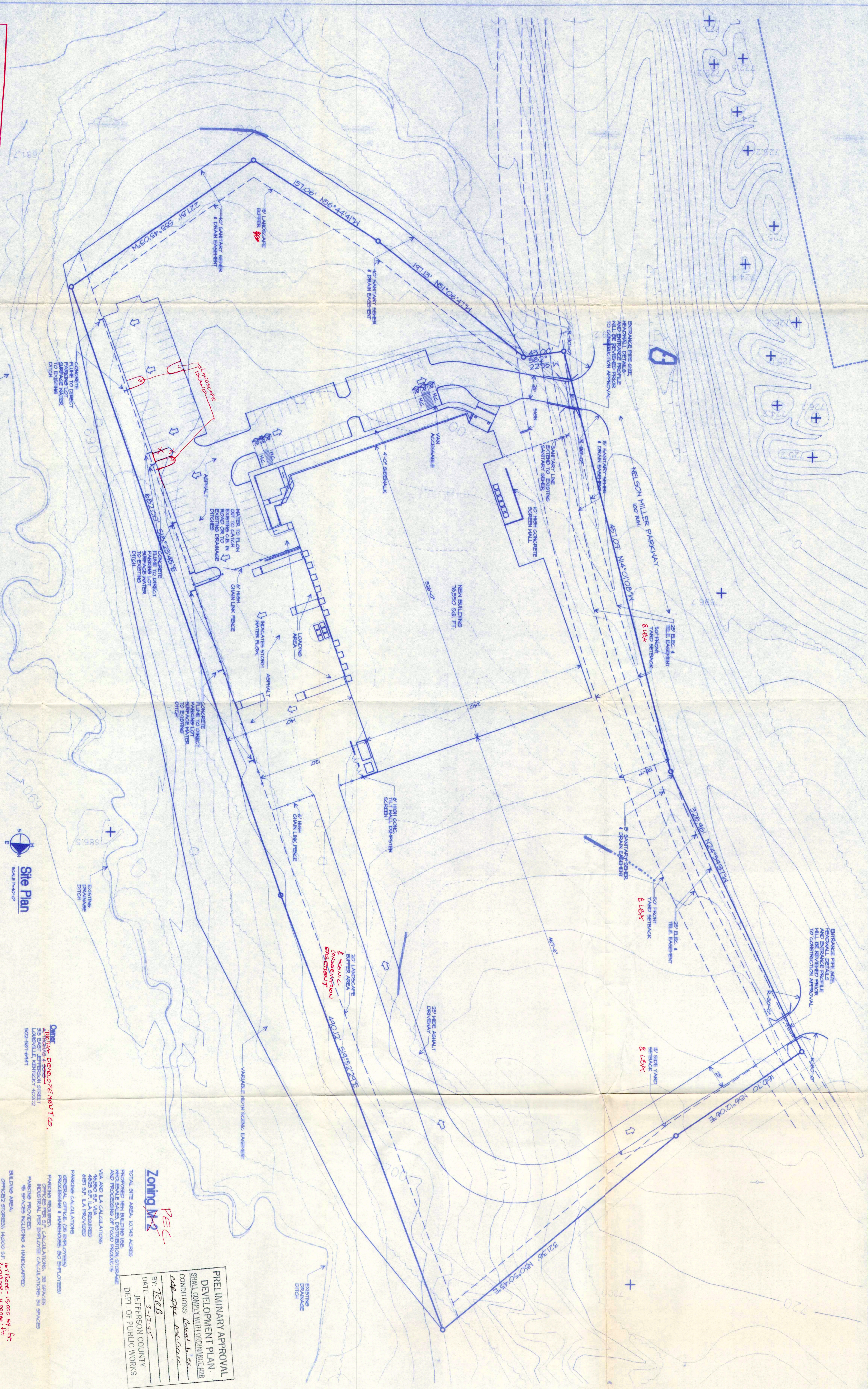


NOTICE
PERMITS SHALL BE ISSUED
ONLY IN CONFORMANCE
WITH THE BINDING ELEMENTS
OF THIS DISTRICT
DEVELOPMENT PLAN

JEFFERSON COUNTY DISTRICT
APPROVED DISTRICT
DEVELOPMENT PLAN
BOOK NO. 9-5-87
APPROVED DATE March 23, 1986
EXPIRATION DATE March 23, 1996
JEFFERSON COUNTY COMMISSION
Planning



Site Plan
Scale 1"=40'

EXISTING SITE	10550 SQ. FT.
EXISTING BUILDING	10550 SQ. FT.
EXISTING PARKING	10550 SQ. FT.
EXISTING ROAD	10550 SQ. FT.
EXISTING UTILITIES	10550 SQ. FT.
EXISTING LANDSCAPE	10550 SQ. FT.
EXISTING BUFFER AREA	10550 SQ. FT.
EXISTING SANITARY LINE	10550 SQ. FT.
EXISTING SEWER LINE	10550 SQ. FT.
EXISTING DRAINAGE DITCH	10550 SQ. FT.
EXISTING NELSON MILLER PARKWAY	10550 SQ. FT.

OWNER: **PRIME OF TEN, INC.**
10550 SQ. FT.
10550 SQ. FT.
10550 SQ. FT.
10550 SQ. FT.
10550 SQ. FT.
10550 SQ. FT.
10550 SQ. FT.
10550 SQ. FT.
10550 SQ. FT.
10550 SQ. FT.

Zoning M-2
RECEIVED
DATE: 3-17-87
BY: J. C. B.
JEFFERSON COUNTY
DEPT. OF PUBLIC WORKS

PRELIMINARY APPROVAL
DEVELOPMENT PLAN
CONDITIONS: 1. 10550 SQ. FT.
2. 10550 SQ. FT.
3. 10550 SQ. FT.
4. 10550 SQ. FT.
5. 10550 SQ. FT.
6. 10550 SQ. FT.
7. 10550 SQ. FT.
8. 10550 SQ. FT.
9. 10550 SQ. FT.
10. 10550 SQ. FT.

A. Thomas and Sons
Proposed Warehouse and Processing Center
LOT 48 Nelson Miller Pkwy.
Jefferson County Kentucky

Revisions
Drawn: SB
Checked By: JH
Project No: 4467
Date: 2/14/85
Certified By:

Kovert-Hawkins-Armstrong
ARCHITECTS
630 Walnut Street • Jeffersonville, Indiana 47130 • (812) 282-9554

RECEIVED
DATE: 3-17-87
BY: J. C. B.
JEFFERSON COUNTY
DEPT. OF PUBLIC WORKS
LDT