

19-CUP-0224

126 East Wellington Avenue



**Louisville Metro Board of Zoning Adjustment
Public Hearing**

**Jon E. Crumbie, Planning & Design Coordinator
January 6, 2020**

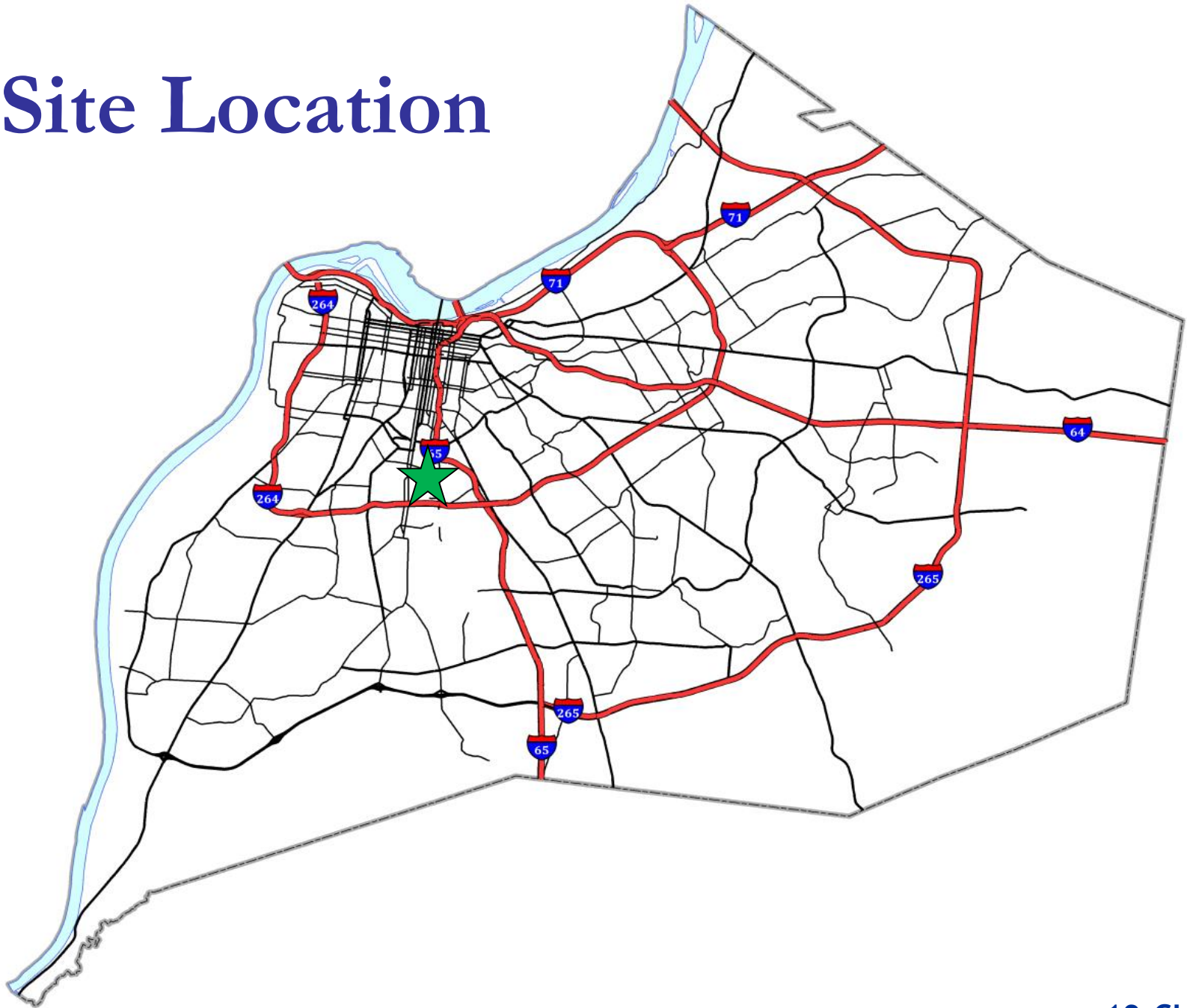
Request(s)

- Conditional Use Permit to allow an accessory apartment.

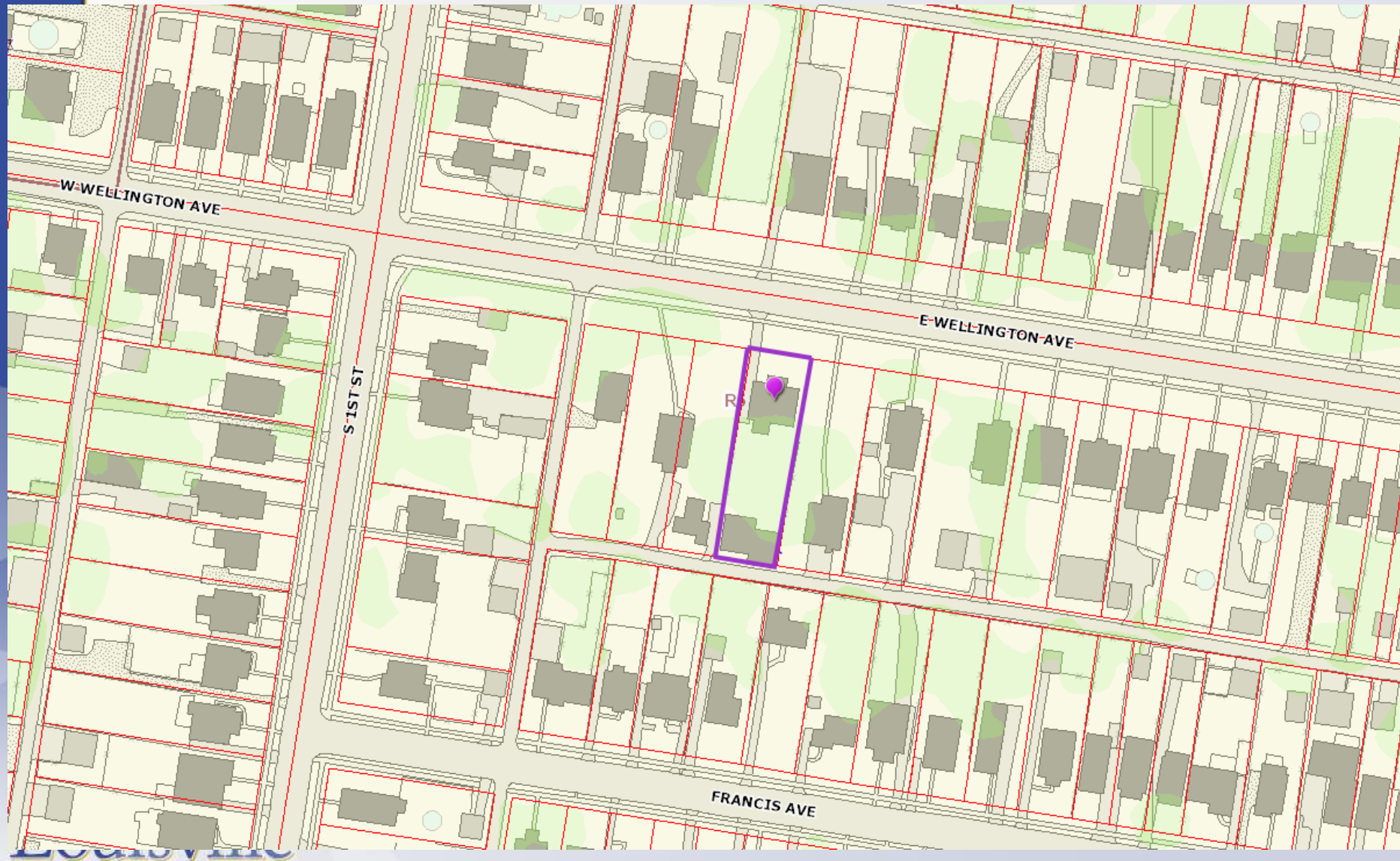
Case Summary/Background

- The applicant requests approval to convert an existing 1,080 square foot portion of a detached garage into an accessory apartment.
- The apartment will include a bathroom, kitchen and three bedrooms.

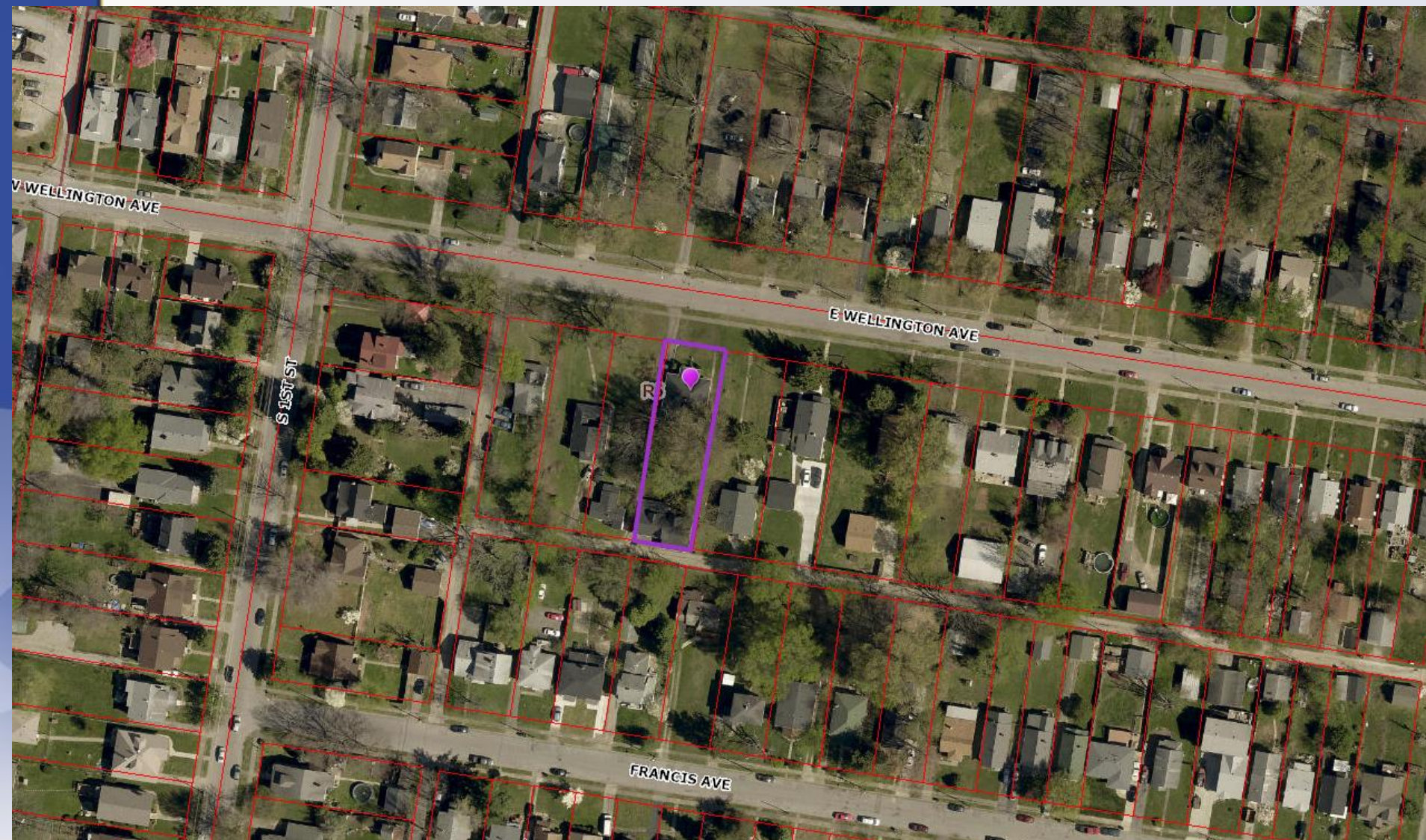
Site Location



Zoning/Form Districts

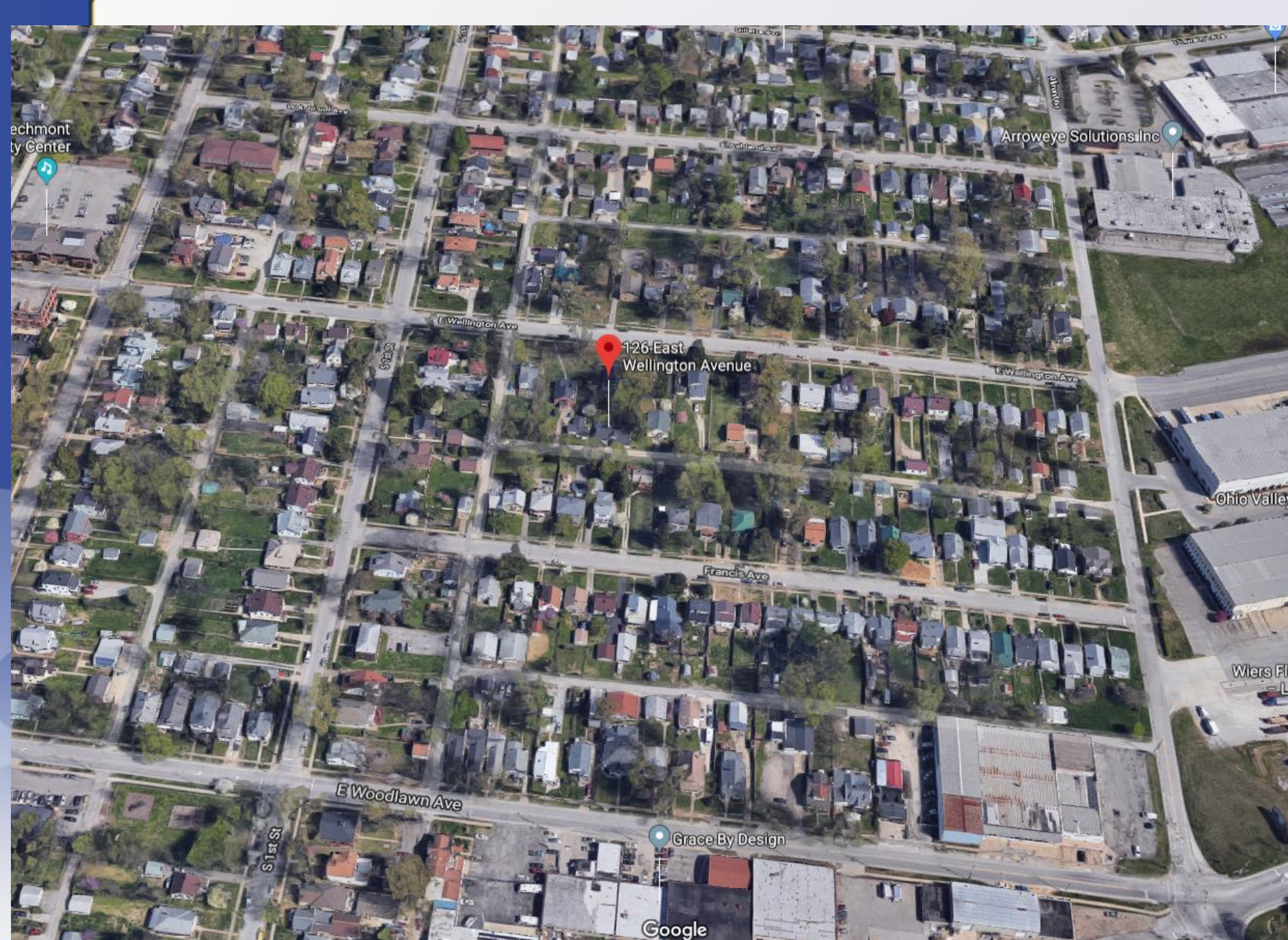


Aerial Photo/Land Use

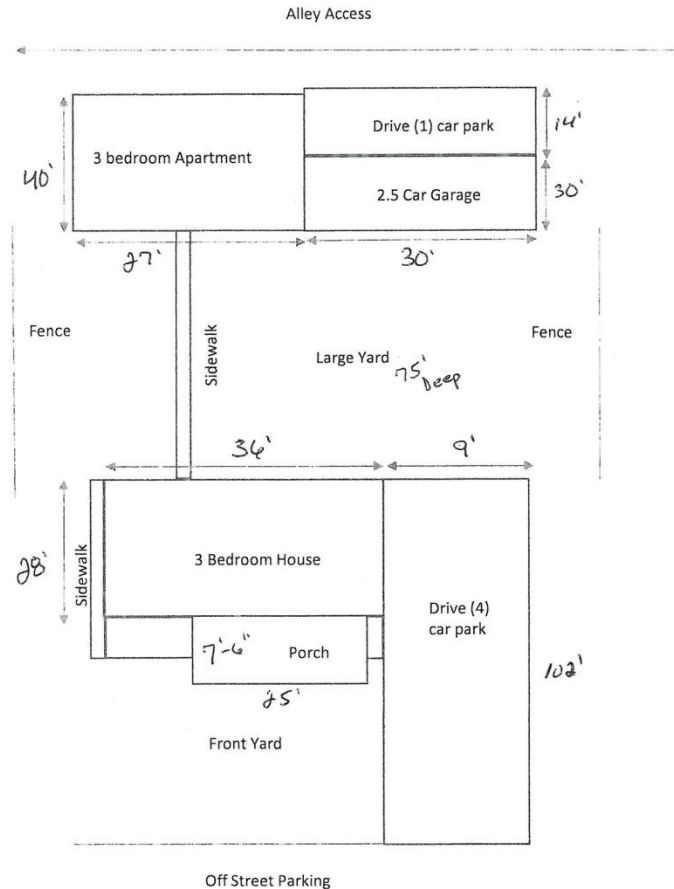


Louisville

19-CUP-0224



Site Plan



126 E Wellington Ave Louisville Ky 40214

R-5 Residential District
Traditional Neighborhood Form District

RECEIVED

OCT 25 2019

PLANNING &
DESIGN SERVICES

19-CUP-0224

Front



Across the Street



Accessory Apartment



Rear Area



Rear



Staff Findings

- There are four listed requirements. The applicant will be asking for relief on Items A. and B. The applicant may need relief on item C.

Required Actions

Approve or Deny:

- Conditional Use Permit to allow an accessory apartment.