

















ADAMS HOUSE — Modern efficiency apartment house built of CELOCRETE lightweight masonry blocks.





Says JOSHUA ADAMS, Builder of Adams House

"I Used CELOCRETE Because Of its Self-Insulating Value"

"CELOCRETE offers many advantages, being fire-safe, extraordinarily durable, and rodent and termite-proof. Primarily, however, I choose CELOCRETE because of its self-insulating value. Without the time and money involved in additional insulation, Celocrete keeps interiors warmer in the winter with less fuel consumption, and more comfortably cool in summer. Moreover, Celocrete's light weight makes it easier to handle and faster to lay."

Call or visit Worrell Bros. for further information about CELOCRETE for your commercial or residential building:

WORRELL BROS., INC.
CONCRETE PRODUCTS • BUILDING MATERIALS
Belmont 2491 • Hubbard Lane and L. & N. R. R.



"Letter on file"

JOSHUA ADAMS, President of Morlin L. Adams & Son, builder of the modern Adams House. This 132-unit efficiency apartment home, designed by architect Peyton M. Davis, will be completely furnished and ultra-modern in offering every convenience of modern living to its occupants.

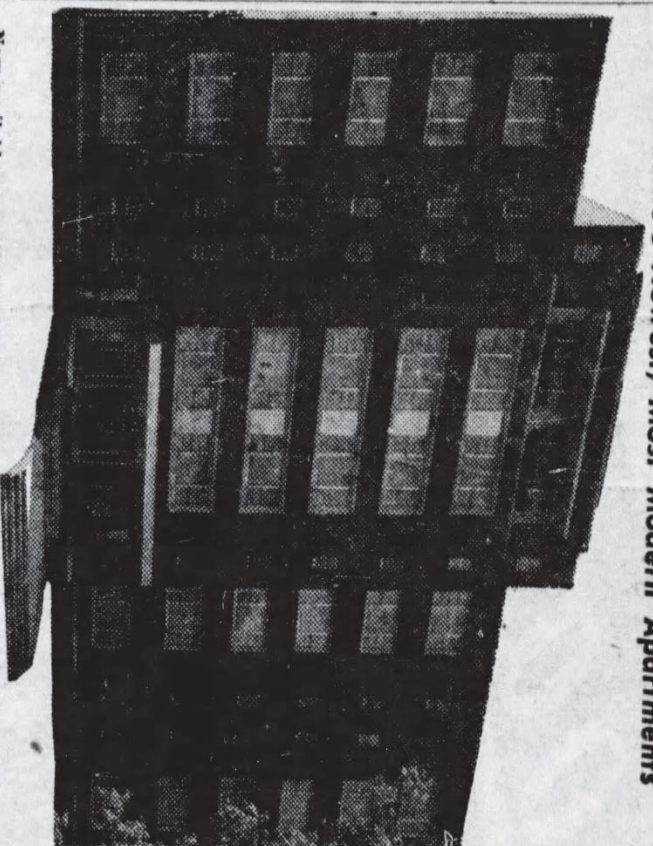
10

PERSONALITIES

THE ADAMS HOUSE

512 WEST ORMSBY AVE.

Louisville's Newest, Most Modern Apartments



Now available, new efficiency apartments, consisting of a large living room with In-A-Door bed, rollaway furniture, wall to wall carpeting, drapes and Venetian blinds. The kitchenette is complete unit with refrigerator, electric range, disposal unit, and cabinets. There is a separate dressing room and tile bath with tub and shower. Rentals from \$87.50 through \$97.50, and this includes all utilities.

OPEN FOR INSPECTION, DAILY 9 TO 9 — SUNDAYS 12 TO 5

MARTIN L. ADAMS & SONS

Magnolia 7600

Magnolia 7601