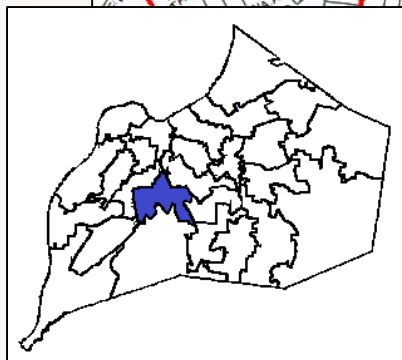


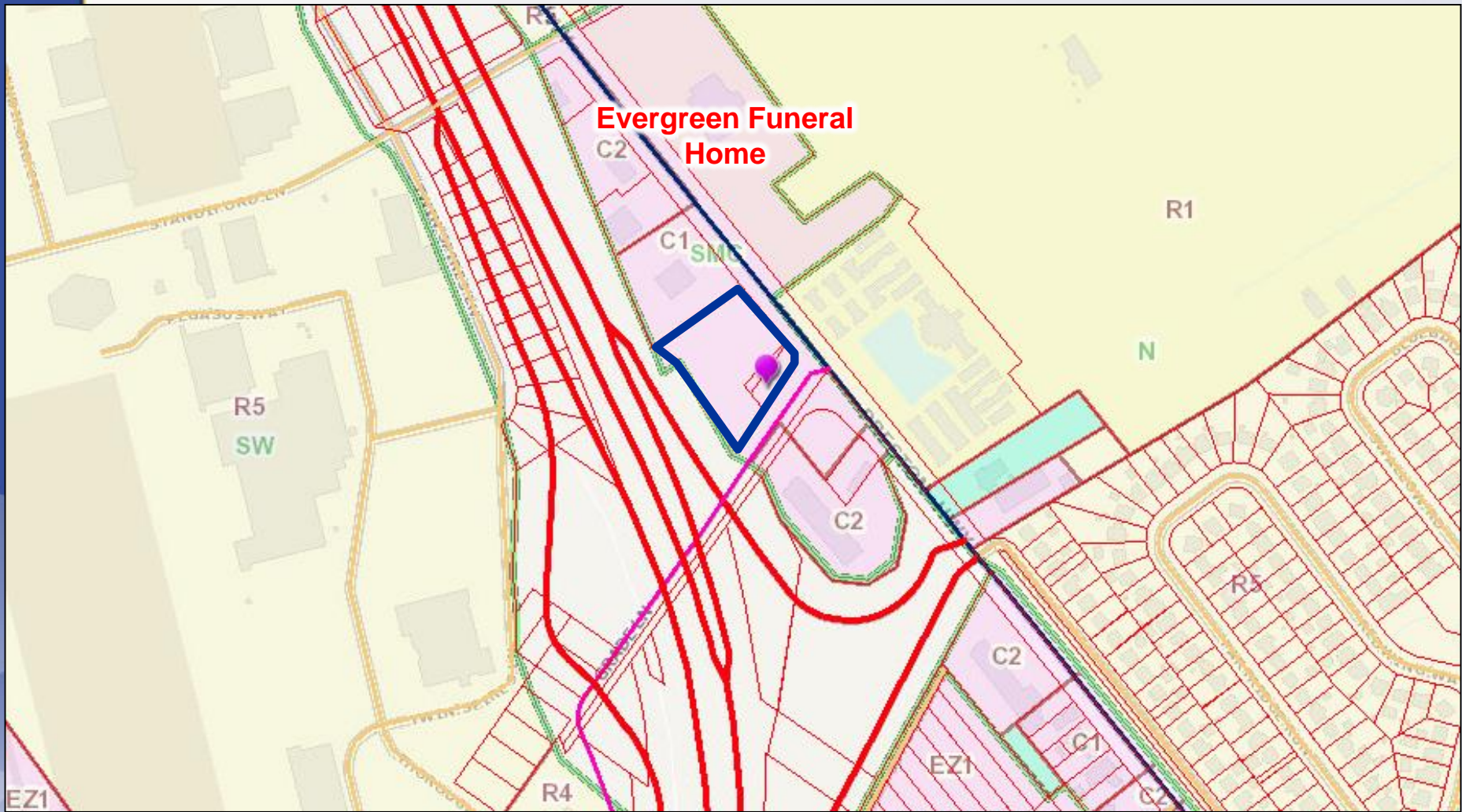
19-ZONE-0054

U-HAUL

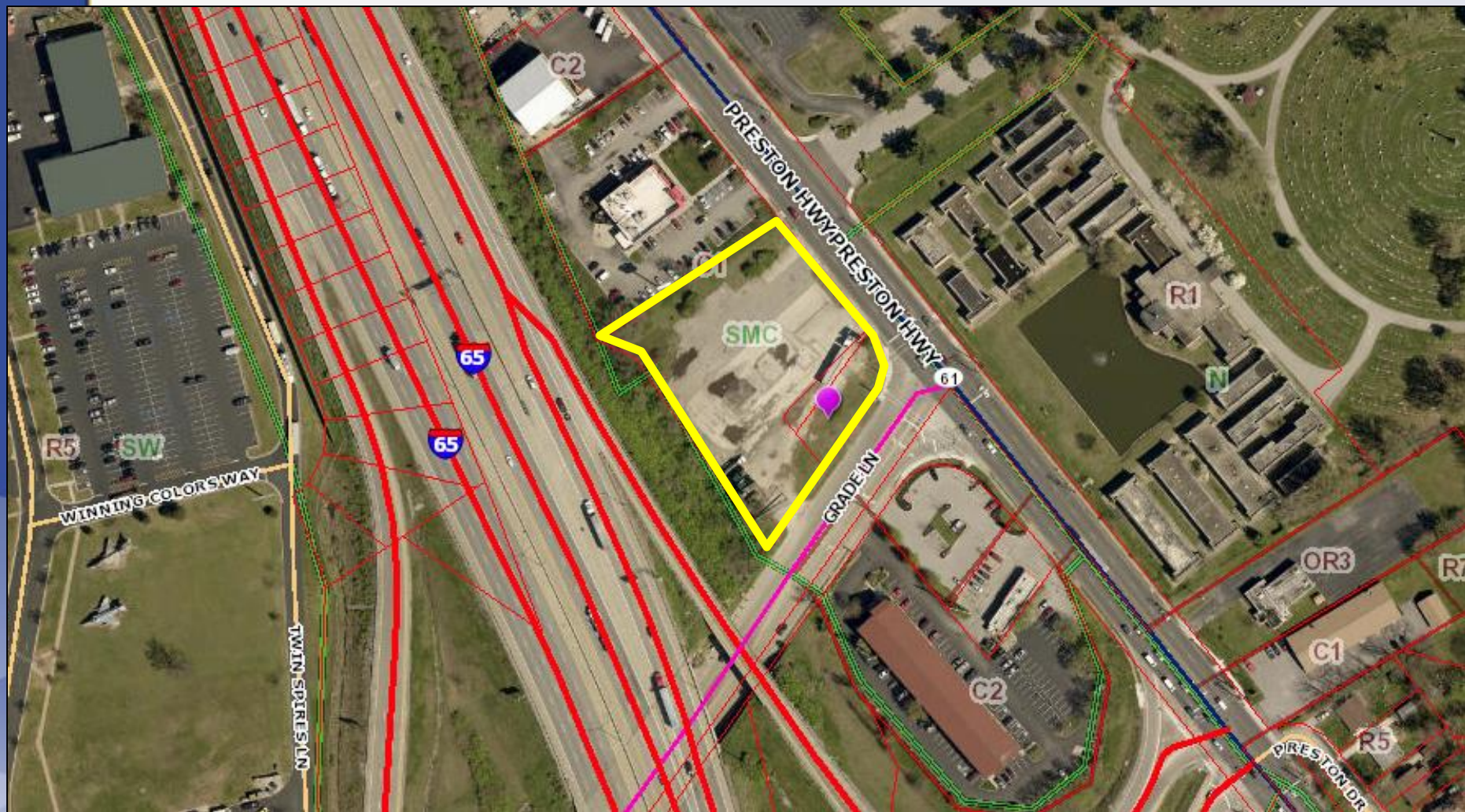


Planning & Zoning Committee
February 11, 2020





Existing: C-1/SMC
Proposed: C-2/SMC



Existing: Vacant Commercial
Proposed: Mini Storage

Request(s)

- **Change in zoning from C-1 to C-2 on 1.71 acres**
- **Conditional Use Permit for mini-warehouse (LDC 4.2.35) with relief from item B & G**
- **Waiver of Land Development Code Section 5.5.2.A.1 to not provide an entrance facing public rights-of-way**
- **Detailed District Development Plan**

Case Summary

- Vacant development site
- Multi-story, climate controlled mini-warehousing and truck sharing use
- Adjacent to C-1 and C-2
- Cemetery opposite Preston Highway

Site Photos-Subject Property

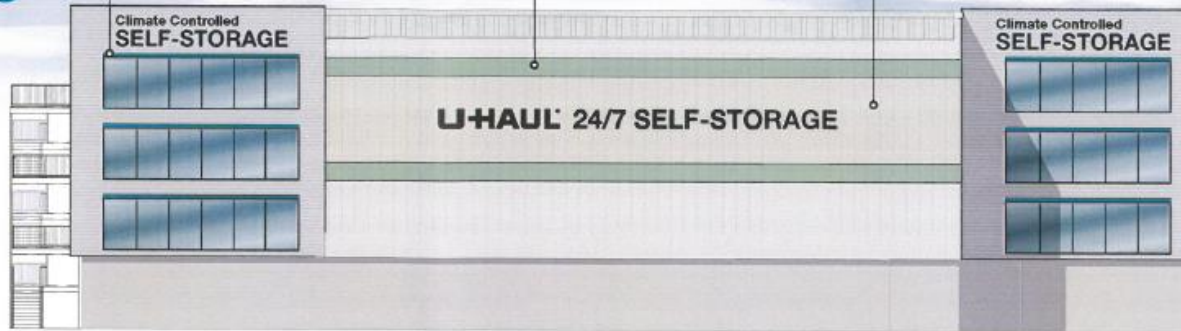




SW 6767 Aquarium

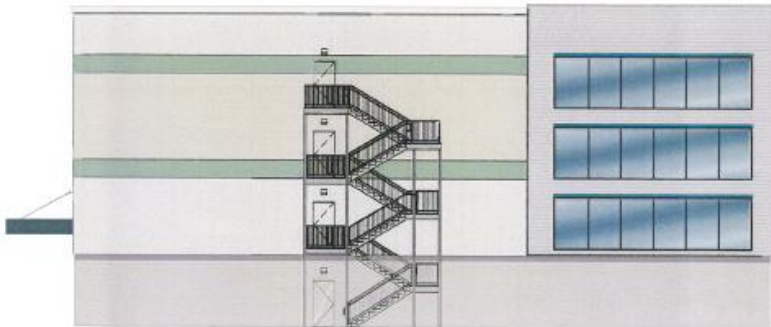
SW 6451 Nurture Green

SW 7011 Natural Choice



RECEIVED
NOV 05 2019
PLANNING & DESIGN
SERVICES

— EAST ELEVATION —



— SOUTH ELEVATION —



— NORTH ELEVATION —



— WEST ELEVATION —

Public Meetings

- Neighborhood Meeting held on 8/9/2019
 - Eight people attended the meeting.
- LD&T meetings on 12/12/2019
- Planning Commission public hearing 1/9/2020
 - No one spoke in opposition.
 - The Commission recommended approval of the zoning map amendment from C-1 to C-2 by a vote of 6-0-1 (two members were not present).