



VIEW FROM RANSDELL





**VIEW FROM LONGEST**



—MAXWELL S. BARKER, ESQ—

Louisville Kentucky.

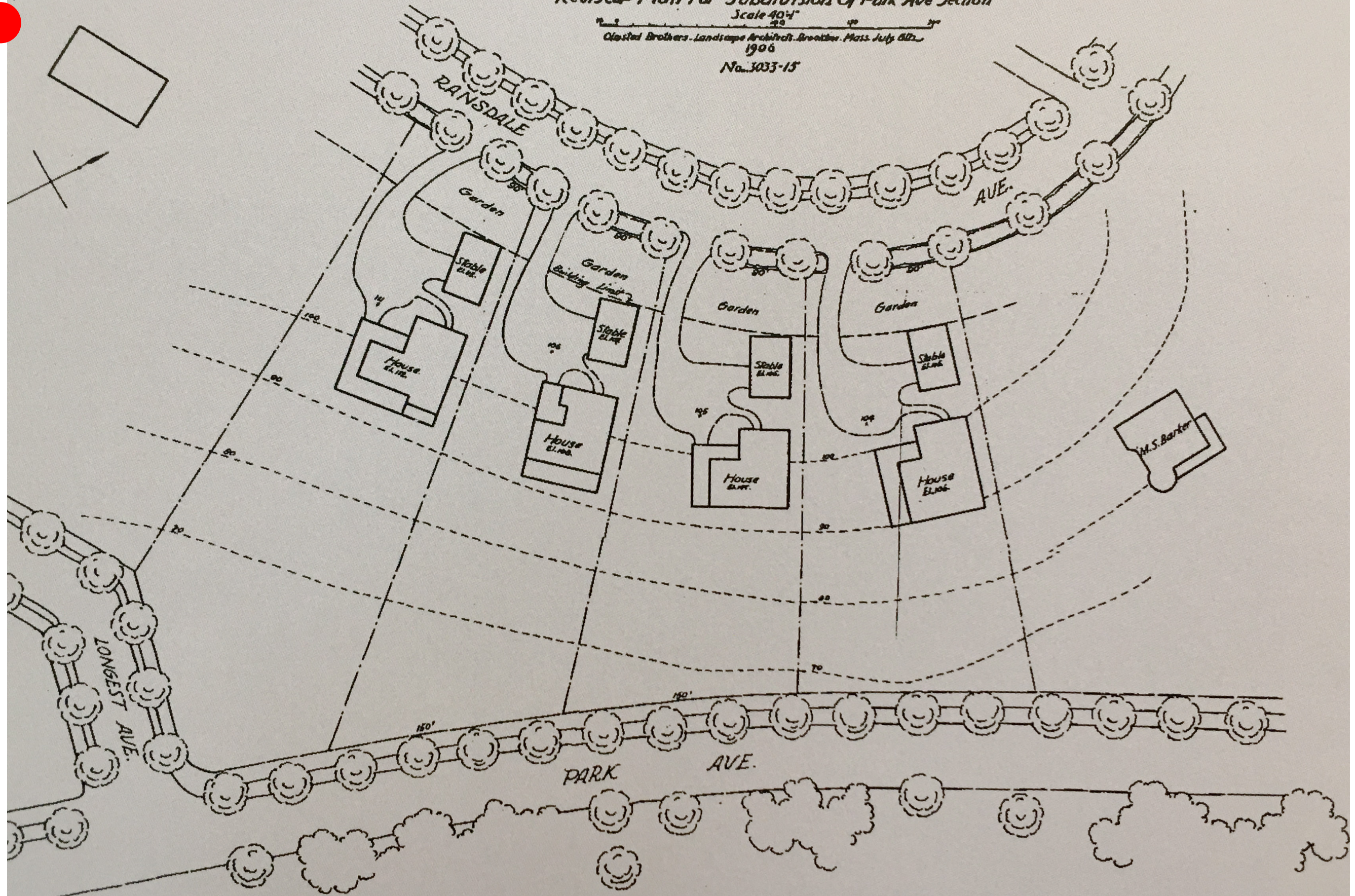
Revised Plan For Subdivision Of Park Ave Section

Scale 40' = 1"

Olmsted Brothers - Landscape Architects - Brookline, Mass. July 22, 1906

No. 3033-15

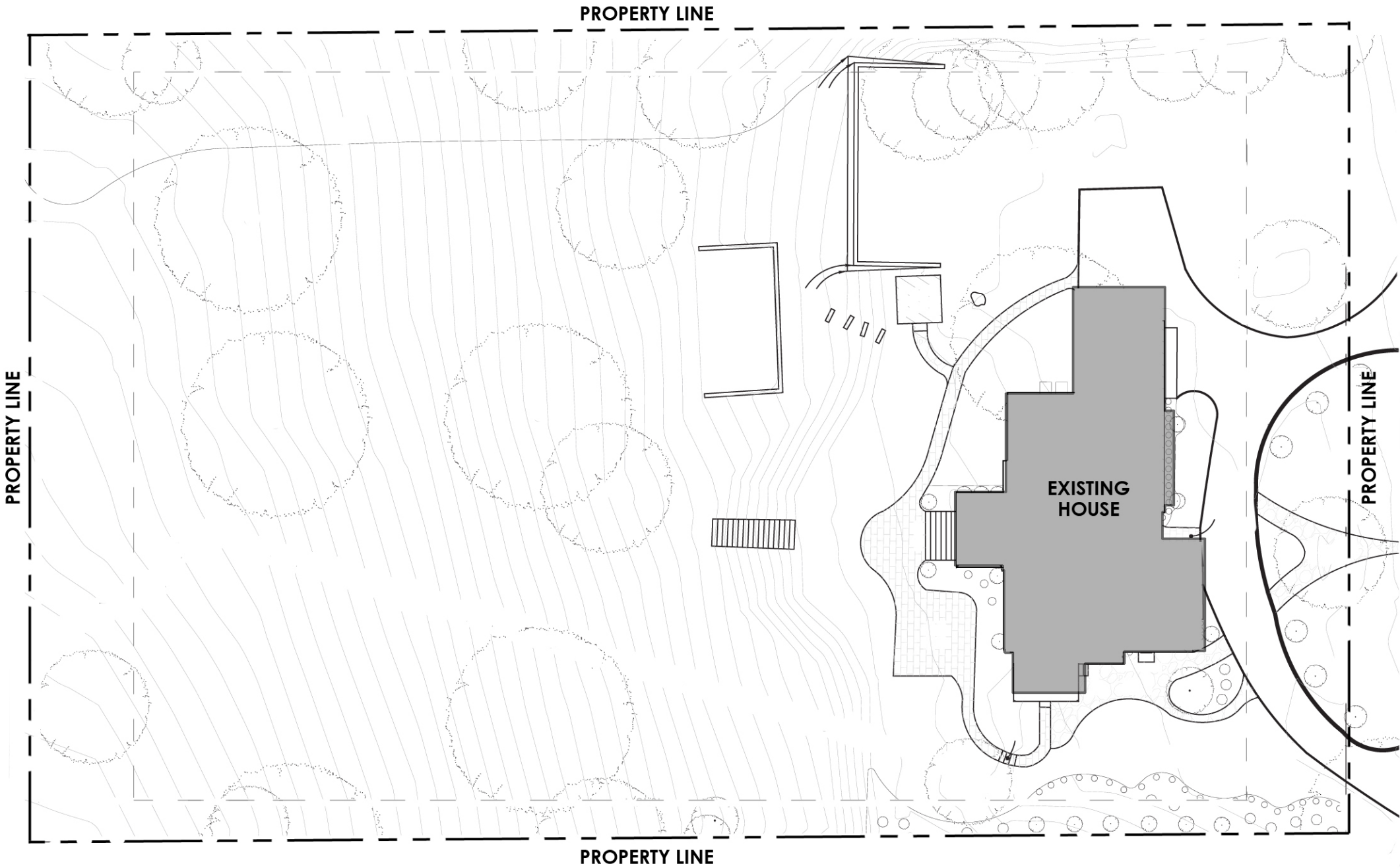
2530 RANSDALL



1906 OLMSTED SUBDIVISION PLAN (RANSDALL AVE.)

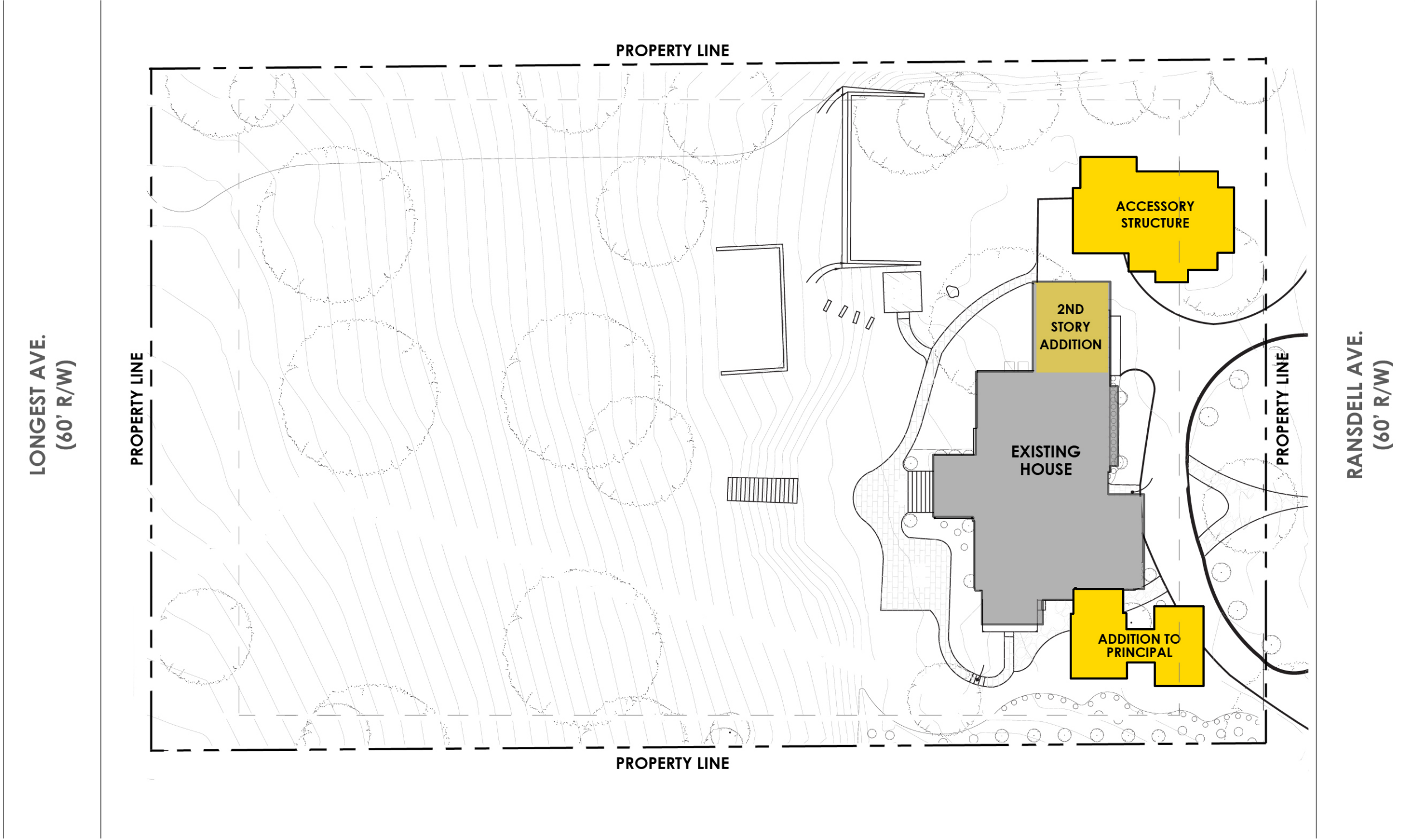


LONGEST AVE.  
(60' R/W)



RANDELL AVE.  
(60' R/W)

EXISTING SITE PLAN



ADDITIONS & ACCESSORY STRUCTURES



LONGEST AVE.  
(60' R/W)

℄ of Street

91°  
Lot Angle

25'-0"  
Min.

204' - 2 3/4"

90°  
Lot Angle

10'-0"  
Min.

246'-7"

333' - 5 3/4"

333' - 5 1/2"

Event Lawn

Garden Terrace

Pool

Terrace

Main House

Arrival Garden

Carriage House

Driveway

Carport

Driveway

89°  
Lot Angle

11'-0"

204' - 6 3/4"

5'-0"  
Min.

190°  
Lot Angle

Pedestrian Walkway

New 42" Wall

RANDELL AVE.  
(60' R/W)

℄ of Street



PROPOSED SITE PLAN





**PROPOSED VIEW FROM RANSDALL AVE.**