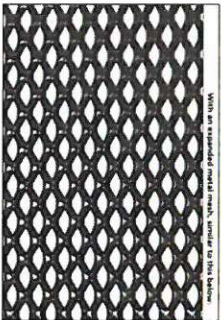
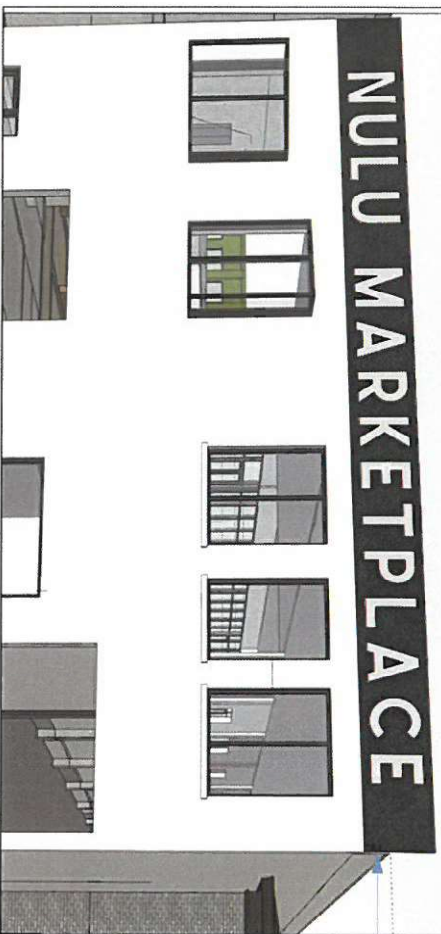


SIGN #1

Quote #: 9156

Mounted 16" Down over the facade of the building



Bolted To Building Facade

2'-0" 2'-0"

Building Facade Height: 31ft x Building Facade Width: 52ft 6in = Total Sq Footage: 1,627.5

Face with Letters

26'-3" 23'-9"

Top View

NULU MARKETPLACE

142.5 Sq Ft

1/8" Aluminum Letters Mounted to Black Mesh Parapet Mounted to Top of Building -2" Square Tube Framework -LED Flood Lighting Mounted to Building

Brushed Aluminum Black

RECEIVED

JUL 20 2020

PLANNING & DESIGN SERVICES

125i
RUEFF SIGNS
www.rueffsigns.com

1530 East Washington St.
Louisville, Kentucky 40206
502-582-1714 - Phone
502-584-6427 - Fax

CUSTOMER

NULU Marketplace

LOCATION

NULU

SALESMAN

Steve Hulsman

DATE

3/6/2020 1:34:15 PM

SCALE

3/16" = 1'

FILE NAME

NULU Marketplace \ NULU Marketplace Signage

Underwriters
Electric Sign
COMPLIES TO UL 48

ALL ELECTRICALS ARE 120 VOLTS UNLESS OTHERWISE INDICATED

This sign is intended to be installed in accordance with the requirements of Article 600 of the National Electrical Code and/or other applicable local codes. This includes proper grounding and bonding of the sign.

This is a sketch, NOT A BLUEPRINT. Any photo overlays or images are merely an attempt to show the sign(s) as close as possible to how they may appear installed.

FINAL SIZES ARE AS LISTED ON THE MECHANICAL BREAKDOWN

The contents of this drawing and all design elements are the property of Rueff Signs, Inc. They are not to be reproduced, changed, or combined to appear outside of your company or website without written permission from the owner of Rueff Signs, Inc. All such actions are prohibited by law.

© RUEFF SIGNS, 2018 ALL RIGHTS RESERVED

20-SIGNAUTH-0002