

**20-DDP-0047**  
**105 Rochester Dr**



**Louisville Metro Development Review Committee**

**Jay Lockett, AICP, Planner I**  
**October 14, 2020**

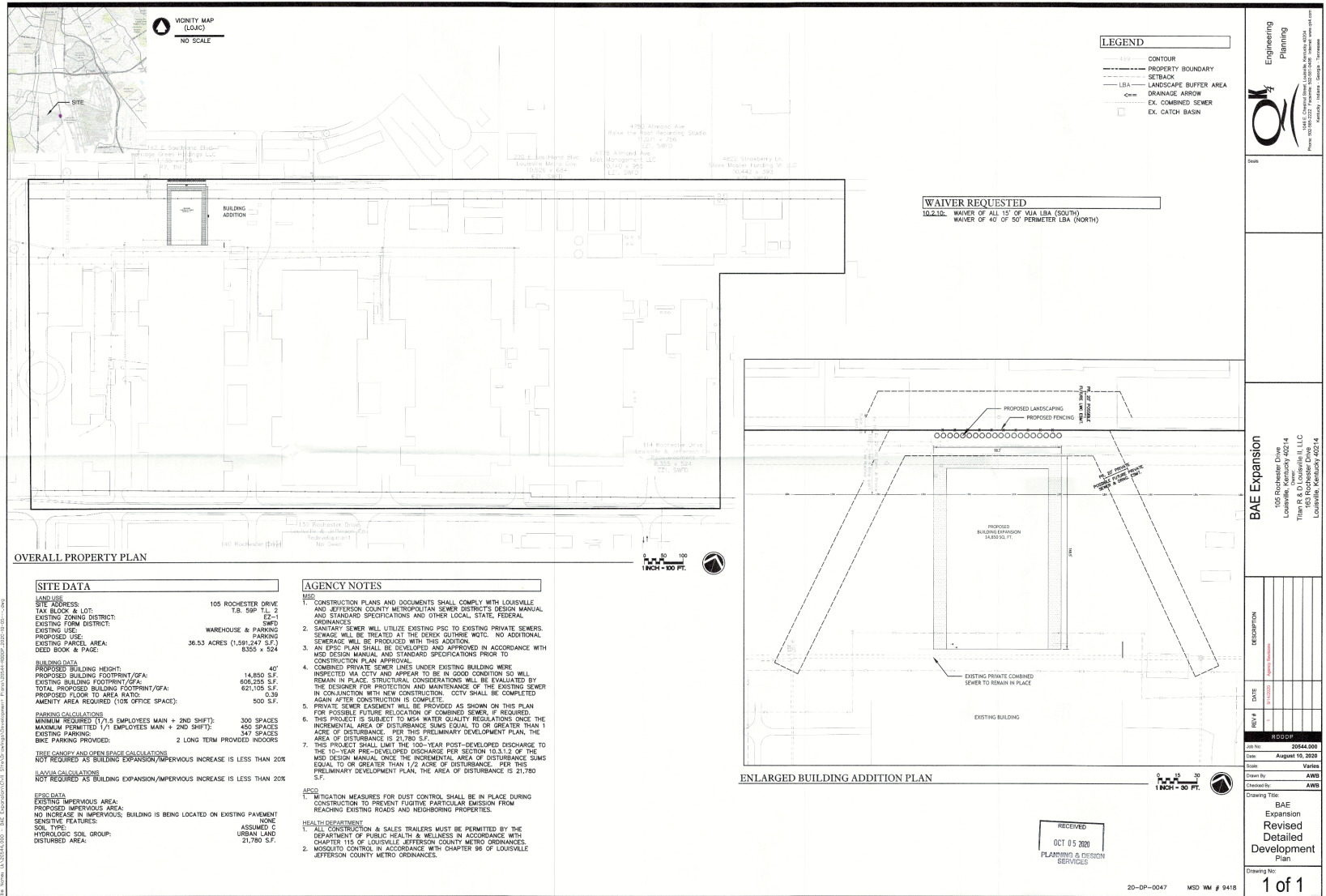
# Requests

**Waiver** of Land Development Code sections 5.5.4.B.1, 5.7.1 and 10.2.4 to encroach into the required 50' property perimeter landscape buffer area.

**Revised Detailed District Development Plan** with revisions to binding elements.



# Proposed Plan



Engineering  
Planning

**BAE Expansion**  
105 Rochester Drive  
Louisville, Kentucky 40214  
Tina R. & D. Louisville II, LLC  
Louisville, Kentucky 40214

**BAE Expansion**  
105 Rochester Drive  
Louisville, Kentucky 40214  
Tina R. & D. Louisville II, LLC  
Louisville, Kentucky 40214

**BAE Expansion**  
105 Rochester Drive  
Louisville, Kentucky 40214  
Tina R. & D. Louisville II, LLC  
Louisville, Kentucky 40214

**BAE Expansion**  
105 Rochester Drive  
Louisville, Kentucky 40214  
Tina R. & D. Louisville II, LLC  
Louisville, Kentucky 40214

**BAE Expansion**  
105 Rochester Drive  
Louisville, Kentucky 40214  
Tina R. & D. Louisville II, LLC  
Louisville, Kentucky 40214

**BAE Expansion**  
105 Rochester Drive  
Louisville, Kentucky 40214  
Tina R. & D. Louisville II, LLC  
Louisville, Kentucky 40214

**BAE Expansion**  
105 Rochester Drive  
Louisville, Kentucky 40214  
Tina R. & D. Louisville II, LLC  
Louisville, Kentucky 40214

**BAE Expansion**  
105 Rochester Drive  
Louisville, Kentucky 40214  
Tina R. & D. Louisville II, LLC  
Louisville, Kentucky 40214

**BAE Expansion**  
105 Rochester Drive  
Louisville, Kentucky 40214  
Tina R. & D. Louisville II, LLC  
Louisville, Kentucky 40214

**BAE Expansion**  
105 Rochester Drive  
Louisville, Kentucky 40214  
Tina R. & D. Louisville II, LLC  
Louisville, Kentucky 40214

**BAE Expansion**  
105 Rochester Drive  
Louisville, Kentucky 40214  
Tina R. & D. Louisville II, LLC  
Louisville, Kentucky 40214

**BAE Expansion**  
105 Rochester Drive  
Louisville, Kentucky 40214  
Tina R. & D. Louisville II, LLC  
Louisville, Kentucky 40214

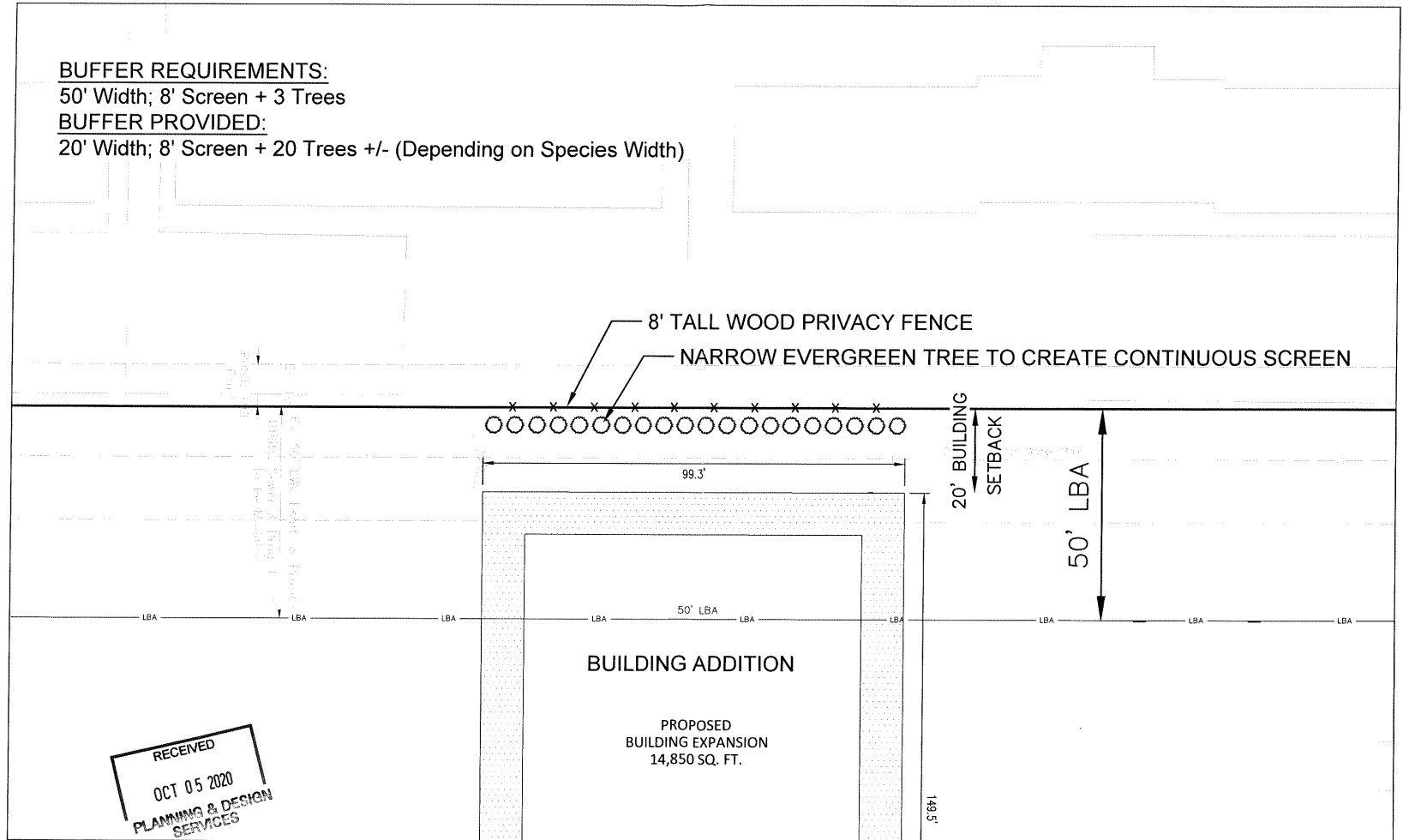
# Landscape Detail

## BUFFER REQUIREMENTS:

50' Width; 8' Screen + 3 Trees

## BUFFER PROVIDED:

20' Width; 8' Screen + 20 Trees +/- (Depending on Species Width)



BAE EXPANSION LANDSCAPE AND SCREENING EXHIBIT

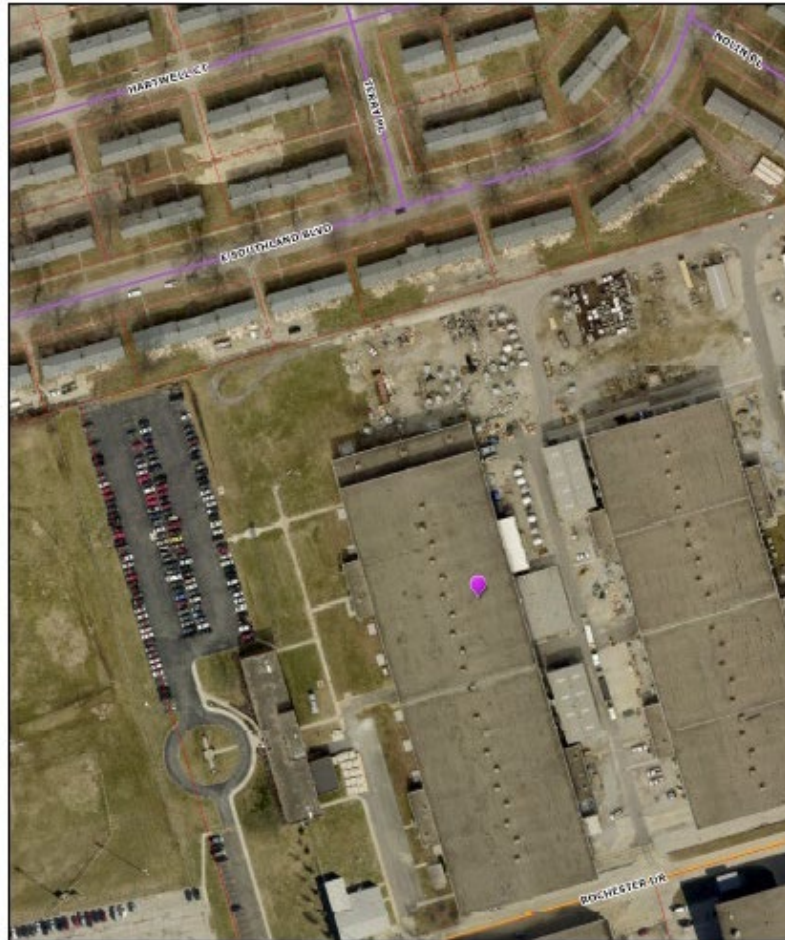


0 10 20  
1 INCH = 20 FT.

20-DP-0047

20-DDP-0047

# Site Aerial



**20-DDP-0047**

Tuesday, October 6, 2020 | 3:52:19 PM



LOJIC © 2020

This map is not a legal document and should only be used for general reference and identification.



# Proposed Binding Element

8. The applicant shall provide screening as shown on the landscaping exhibit presented to the Development Review Committee on October 14, 2020. The final location and type of trees shall be shown on the approved landscape plan and chosen in conference with Planning and Design Services staff landscape architect.

# Staff Findings

- The Requests are adequately justified and meets the standard of review.

# Required Actions

- Approve or Deny the Waiver.
- Approve or Deny the Revised Detailed District Development Plan with Revision to Binding Elements