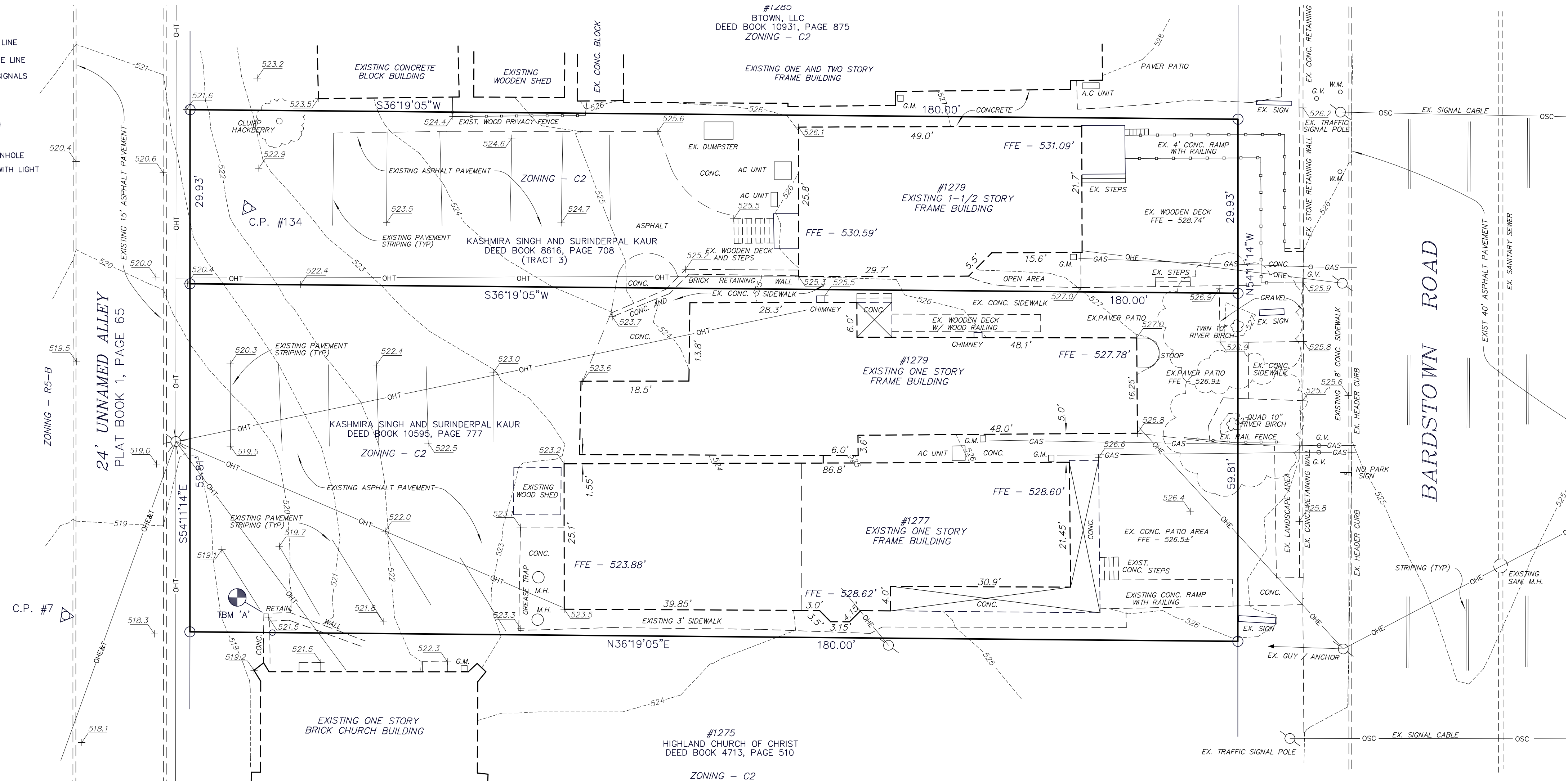




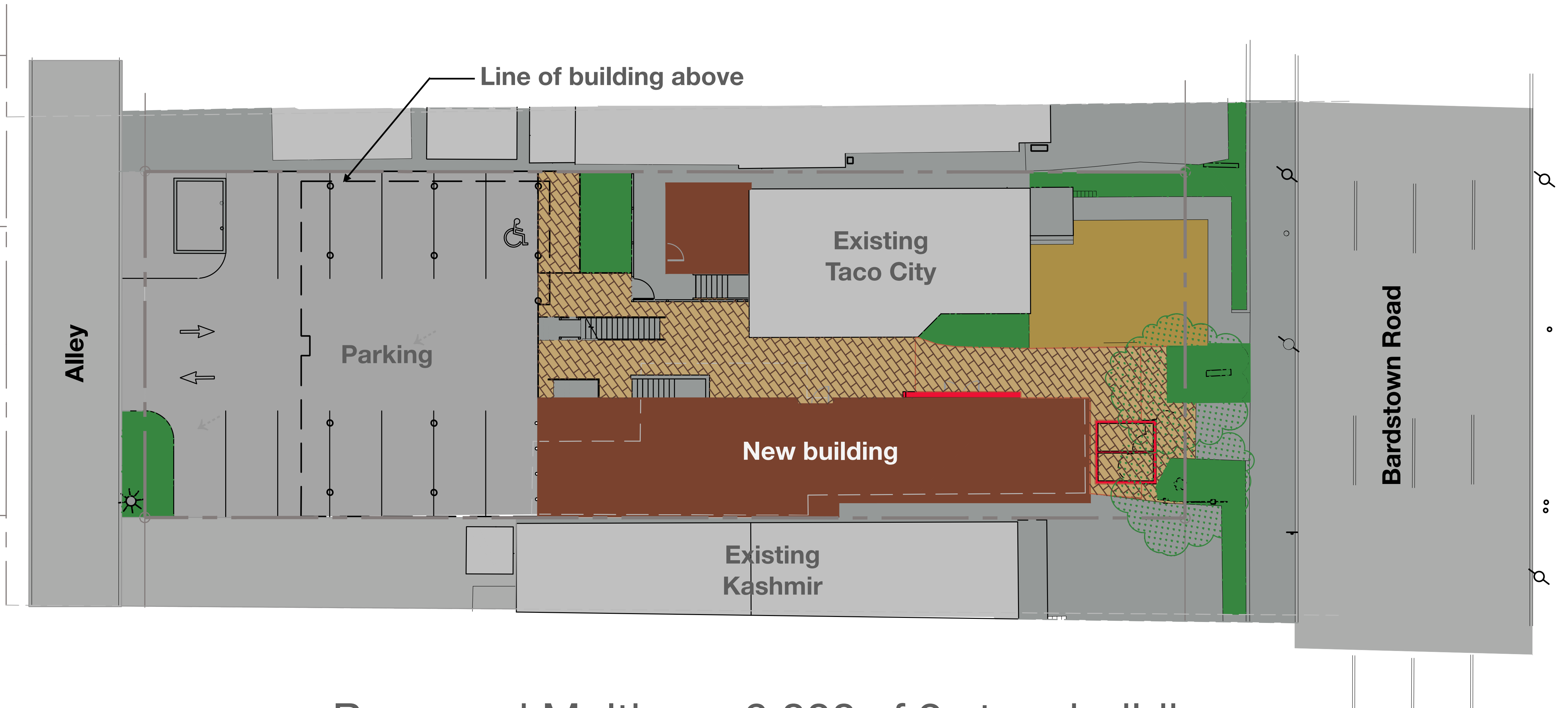
1279 Bardstown Road

Janky Sing - Yogesh Pal

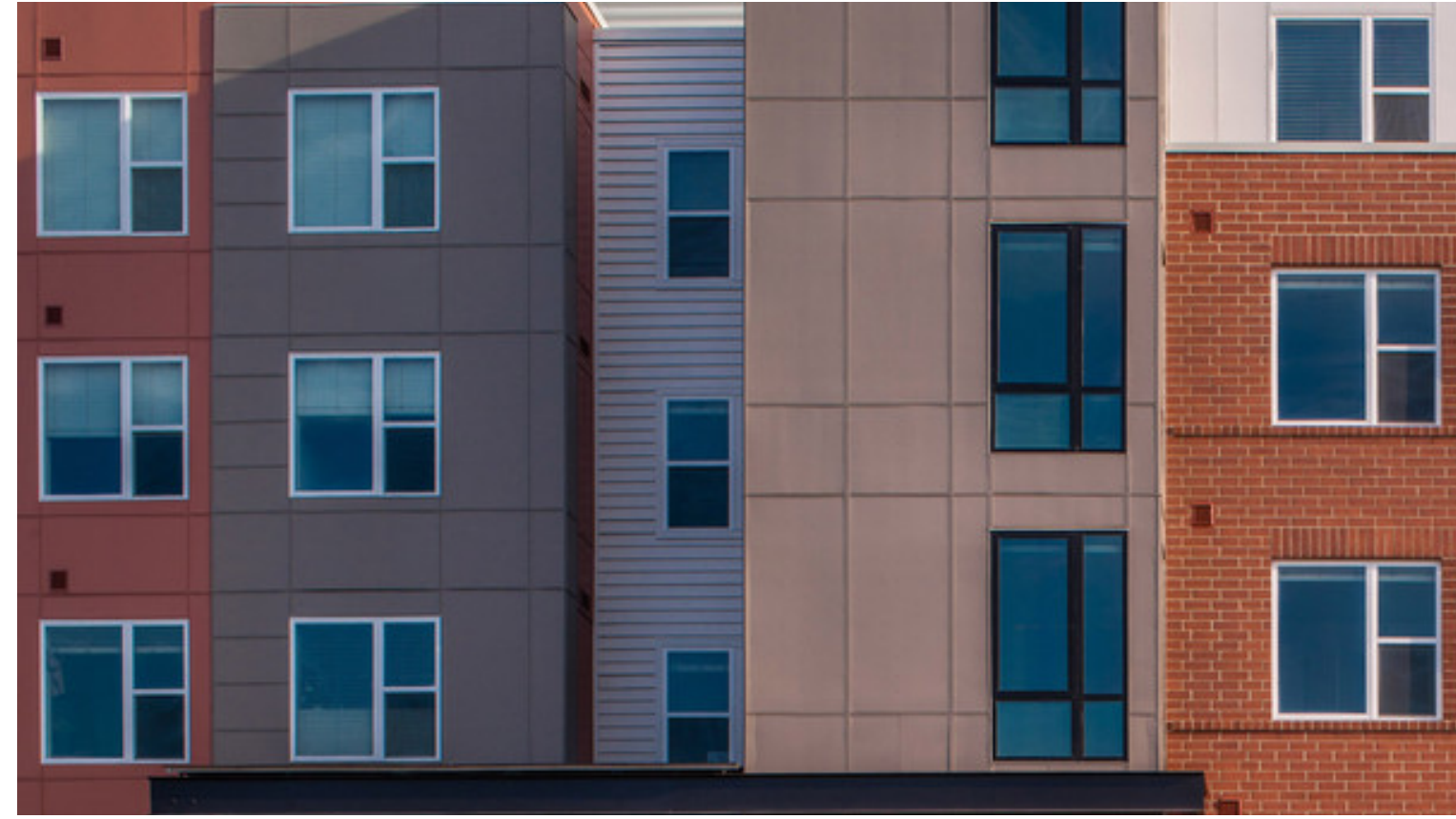
- BENCHMARK
- ITOUR
- RHEAD ELECTRIC LINE
- RHEAD TELEPHONE LINE
- RHEAD TRAFFIC SIGNALS
- JTY POLE
- ITARY SEWER
- CE (TYPE NOTED)
- E LINE
- ITARY SEWER MANHOLE
- IBINATION POLE WITH LIGHT
- : HYDRANT
- BLD. SERVICE)
- TYPE NOTED)
- D ANCHOR
- RD
- IN



Project site



Proposed Multi-use 6,000 sf 2 story building



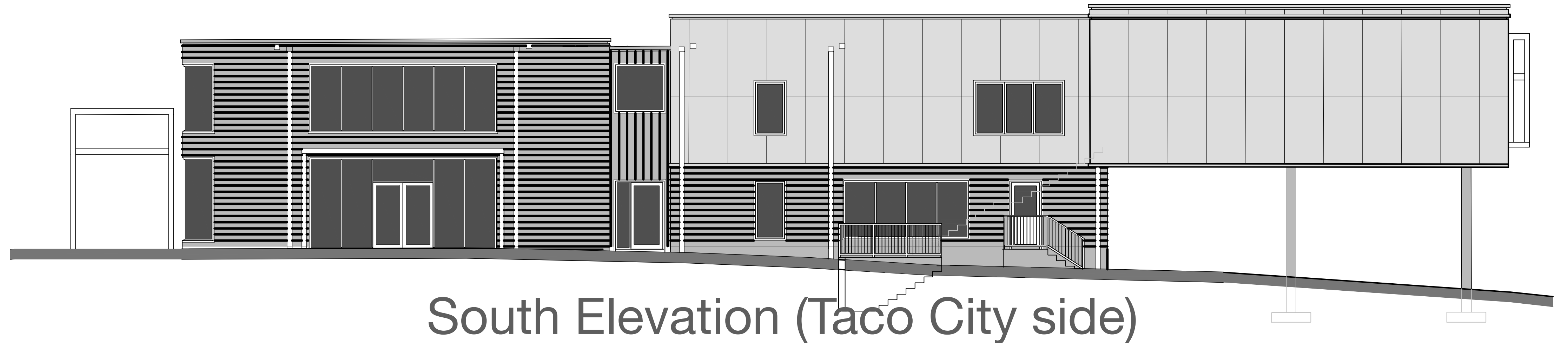
Reference Materials



Bardstown Road Elevation



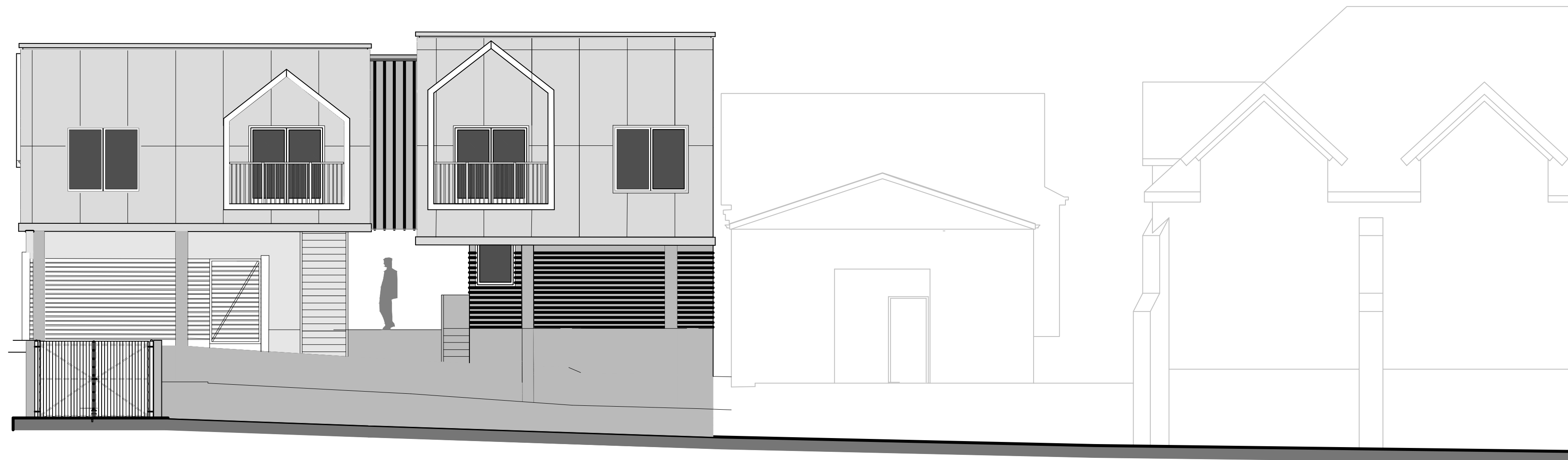
Reference Materials



South Elevation (Taco City side)



Reference Materials



Alley Elevation