

An aerial photograph of a city, likely Los Angeles, showing a dense urban landscape with various buildings, streets, and green spaces. The entire image is overlaid with a semi-transparent purple filter. The text is centered over the image.

California & Victory Park Neighborhood Plan

20-AREA-0002

Planning Commission

February 18th, 2021

Project Team



OFFICE OF
**ADVANCED PLANNING
AND SUSTAINABILITY**
A Division of Develop Louisville



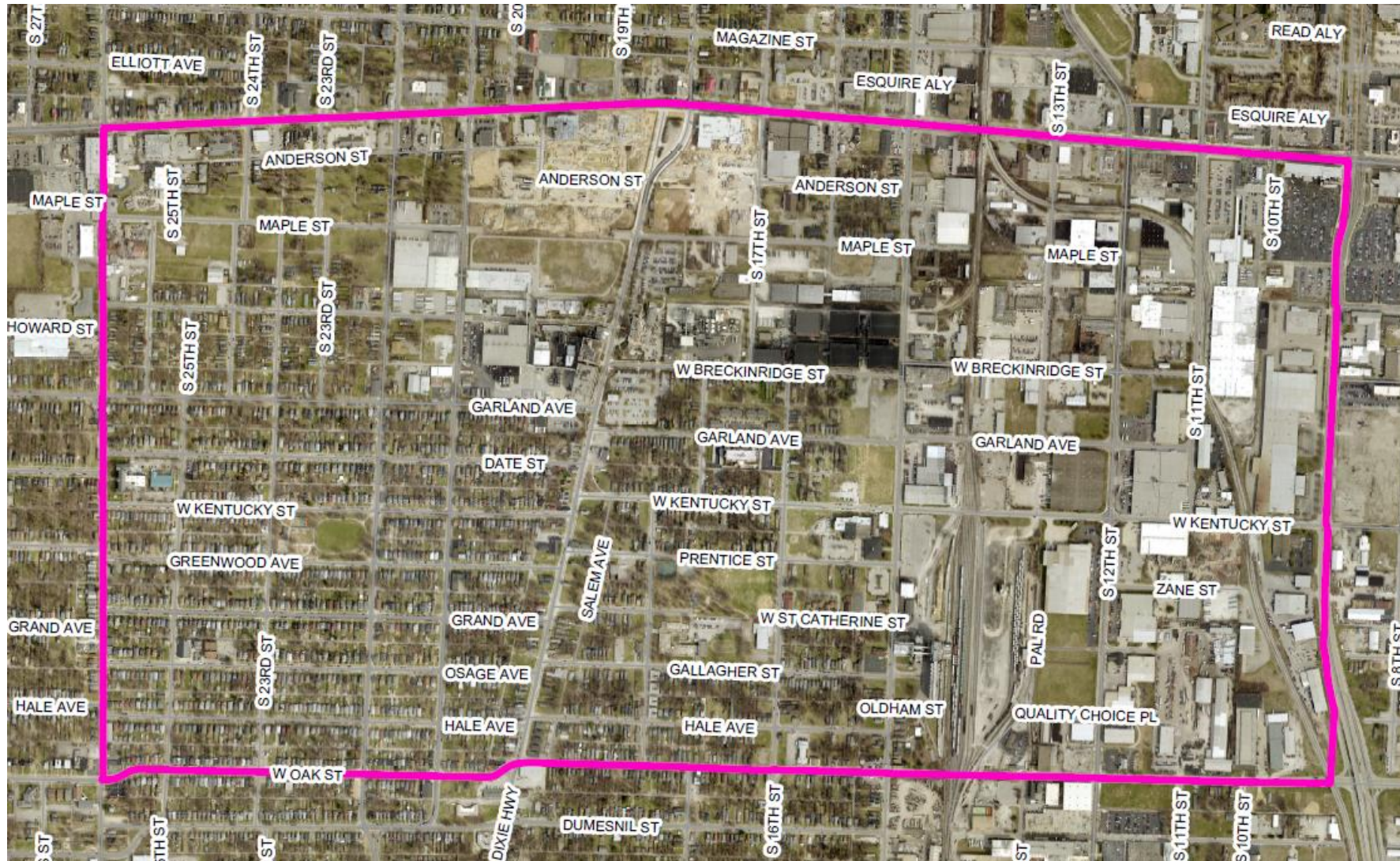
**Gresham
Smith**



Center For Neighborhoods
VISION. KNOWLEDGE. ACTION.

bdc
booker design
collaborative

Study Area



The California and Victory Park Neighborhood is bounded by 26th Street to the west, 9th Street to the east, Broadway to the north, and Oak Street to the south.

Timeline



Community Engagement

The neighborhood plan was informed by significant community input gathered through extensive engagement.

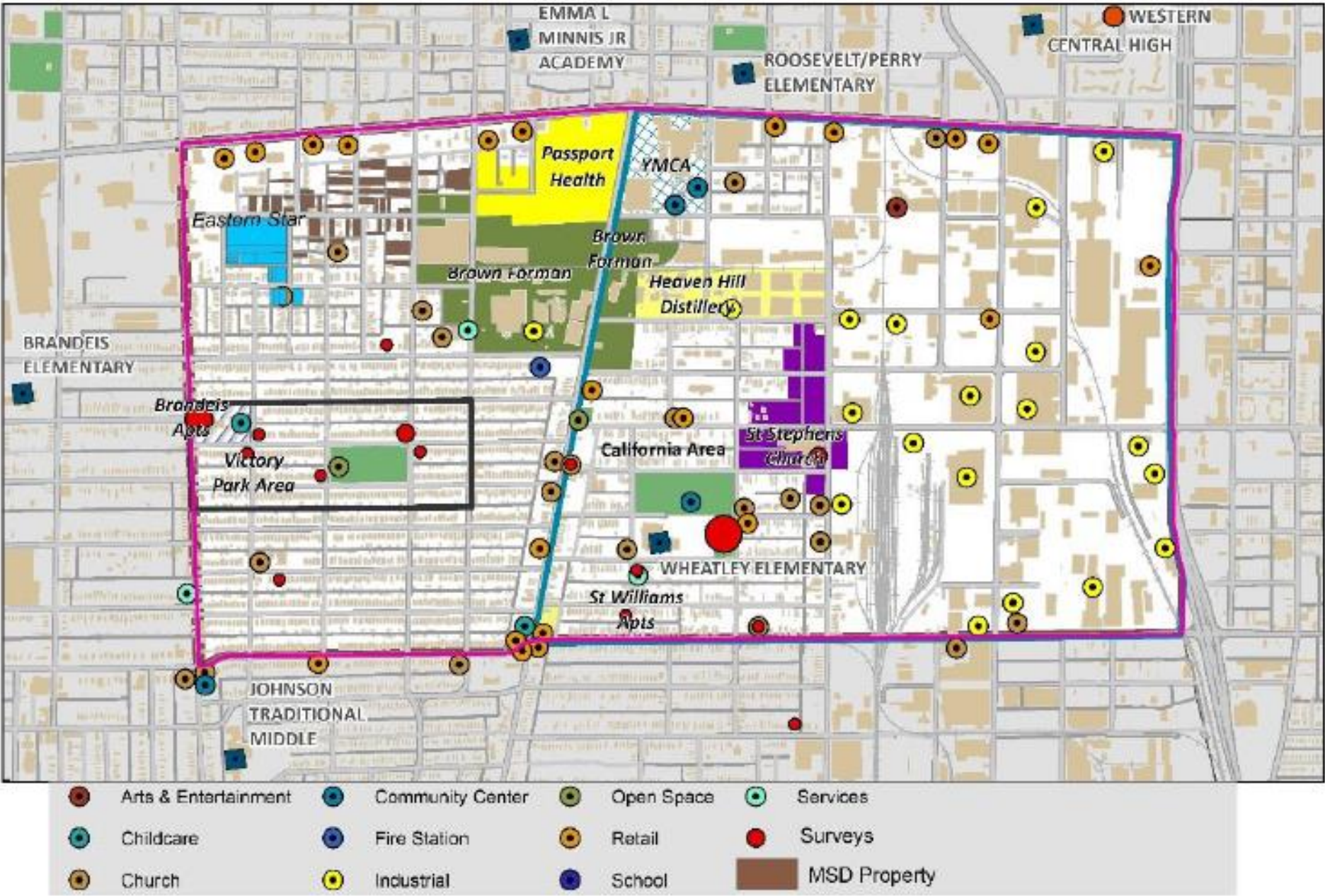
Early Engagement (Feb.-April '18)

- One-on-one conversations with residents at community gatherings
- Door-to-door canvassing
- Focus group conversations with community stakeholders

Plan Development Engagement (May-Dec. '18)

- 2 community workshops
- Walking workshop
- California Day and Victory Park Day
- Draft plan presentation and refinement with community and Advisory Group

Map of early engagement locations



Contents of the Plan

1. Introduction
2. Neighborhood Identity
3. Community Vision
4. Responsibility Matrix
5. Executive Summary



VISION STATEMENT

**THE CALIFORNIA / VICTORY PARK NEIGHBORHOOD
IS AN ENGAGED, UNIFIED COMMUNITY THAT CREATES
OPPORTUNITIES FOR SAFE AND HEALTHY LIVING WHERE
EVERYONE THRIVES.**



PLAN ELEMENTS



LAND USE & COMMUNITY FORM

Land Use and Community Form recommendations focus on policy changes and tasks that are necessary to achieve the desired community character and land uses throughout the neighborhood.

MOBILITY

Mobility recommendations focus on making the neighborhood's transportation systems accessible, safe, and equitable, with a distinct focus on the needs of residents.

ENVIRONMENT

Environmental recommendations are intended to identify programs, tasks, and policy recommendations to address long-standing issues with environmental justice, with a distinct focus on air quality, flooding, and urban heat island.

PUBLIC SPACE

Public Space recommendations are intended to build upon strong community assets and identify new opportunities for enhanced public space to improve quality of life throughout the neighborhood.

COMMUNITY BUILDING

Community Building recommendations were provided to help bring the diverse constituencies of the neighborhood together around common community improvement goals.

Land Use & Community Form Goals Highlights

- LU1 Eliminate vacant and abandoned properties throughout the neighborhood.
- LU2 Use Form Districts and Zoning Districts to encourage appropriate development/redevelopment.
- LU3 Ensure a variety of housing options for existing and future residents that help prevent displacement of existing neighborhood residents.

Mobility Goals Highlights

- M2 "Calm" traffic within the neighborhood.
- M3 Ensure safe and accessible bicycle and pedestrian travel throughout the neighborhood.
- M4 Make transit a safe, reliable mobility option.
- M5 Ensure safe and effective vehicular travel throughout the neighborhood.

Environment Goals Highlights

- E1 Improve air quality and urban heat island effects within the neighborhood.
- E2 Reduce negative stormwater impacts throughout the neighborhood.

Public Space Goals Highlights

- PS1 Enhance and protect California Park and Victory Park as critical community assets.
- PS2 Increase public open space throughout the neighborhood.

Community Building Goals Highlights

- CB1 Expand and enhance opportunities to bring the entire community together.

Planning Committee

20-AREA-0002 and the California & Victory Park Neighborhood Plan were reviewed by the Planning Committee of the Planning Commission on January 25, 2021.

- The Planning Committee asked that policies regarding public utility connection costs for vacant property be researched and subsequently included in the plan, if and where appropriate.
 - After consulting relevant Metro agencies, a new recommendation was added.
 - **LU1.1.B: Explore programs and/or policies for utility cost relief on vacant properties.**
- Planning Committee voted to bring the case to a hearing of the full Planning Commission.

Staff Findings

Staff finds that the proposed goals, objectives, and recommendations contained within the California & Victory Park Neighborhood Plan and Executive Summary are in conformance with the Neighborhood Plan Ordinance (LMCO 161) and Plan 2040.

- Community Form Goals 1-5
- Mobility Goals 1-3
- Community Facilities Goals 1-2
- Economic Development Goal 1
- Livability Goals 1-4
- Housing Goals 2-3

Public Notification

Legal ad in Courier Journal

- *February 9th, 2021*

Electronic notice via neighborhood notification system

- *February 12th, 2021*

Postcards sent to every resident in the California & Victory Park zip codes (Council President James)

- *February 4th, 2021*

Planning Commission Required Actions

Determine whether the California & Victory Park Neighborhood Plan is in conformance with Plan 2040.

- Recommend to Metro Council approval/denial of the **California & Victory Park Neighborhood Plan**.
- Recommend to Metro Council approval/denial of the **California & Victory Park Neighborhood Plan Executive Summary** as an amendment to Plan 2040.