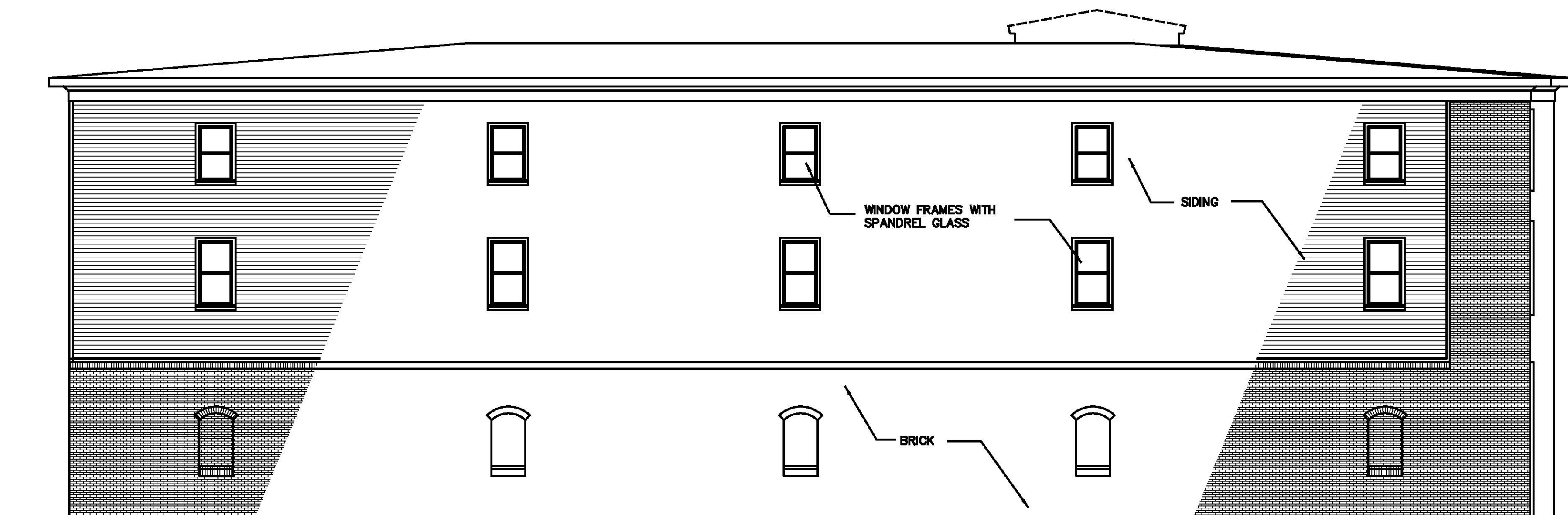


studio kremer architects
 1231 S Shelby St, Louisville, KY 40203
 TEL 502.499.1100 FAX 502.499.1101
 s t u d i o



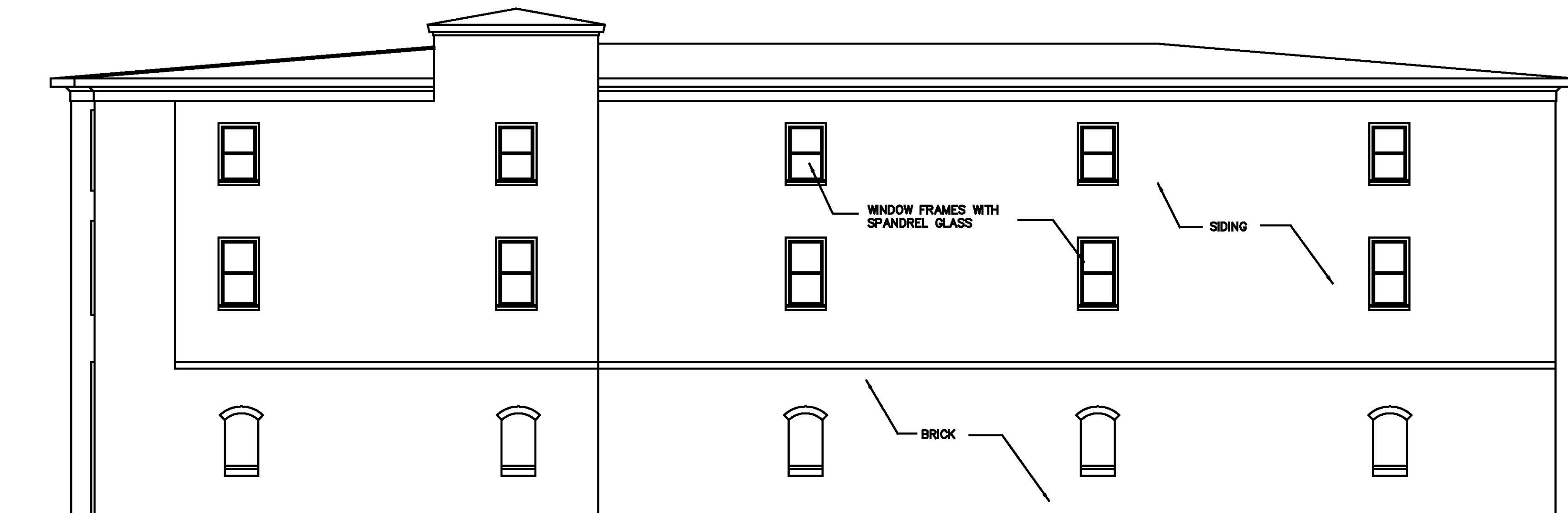
PROPOSED LEFT – EAST – ELEVATION
 SCALE: 1/8" = 1'-0"



PROPOSED FRONT – NORTH – ELEVATION
 SCALE: 1/8" = 1'-0"



PROPOSED REAR – SOUTH – ELEVATION
 SCALE: 1/8" = 1'-0"



PROPOSED RIGHT – WEST – ELEVATION
 SCALE: 1/8" = 1'-0"

PROPOSED ELEVATIONS
PROPOSED STORAGE BUILDING
 722 EAST CHESTNUT STREET
 LOUISVILLE, KY

DATE: 8.14.20
 DRAWN BY: SEK
 CHECKED BY: SKA
 REVISIONS:

SKA# 2020-14

PR2