

NORTON AUDUBON

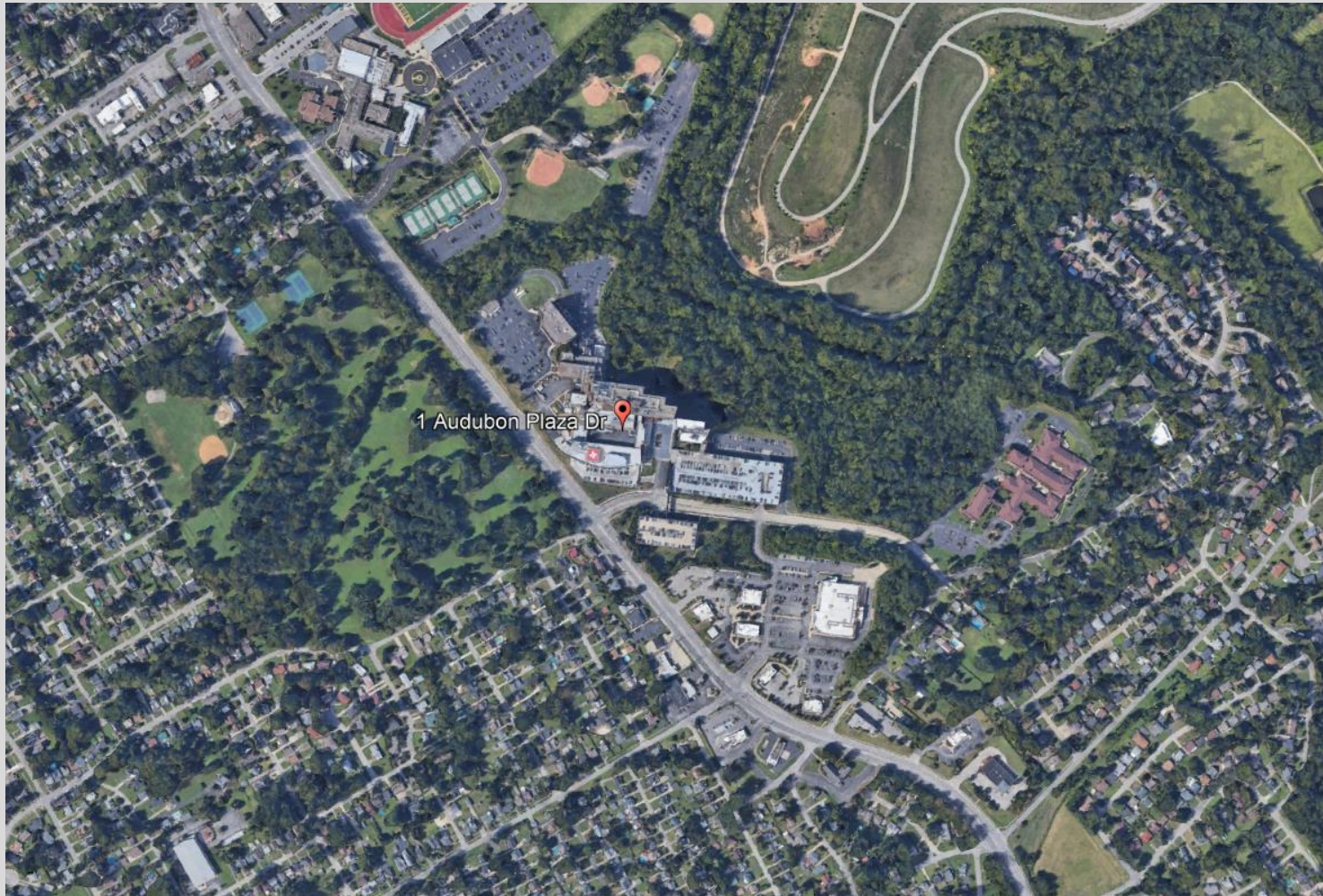
Owner: Norton Hospitals Inc.
Applicant: Norton Hospitals Inc.
Location: 1 Audubon Plaza Drive
2355 Poplar Level Road

- **Revised Detailed District Development Plan:**
 - **21-DDP-0049**

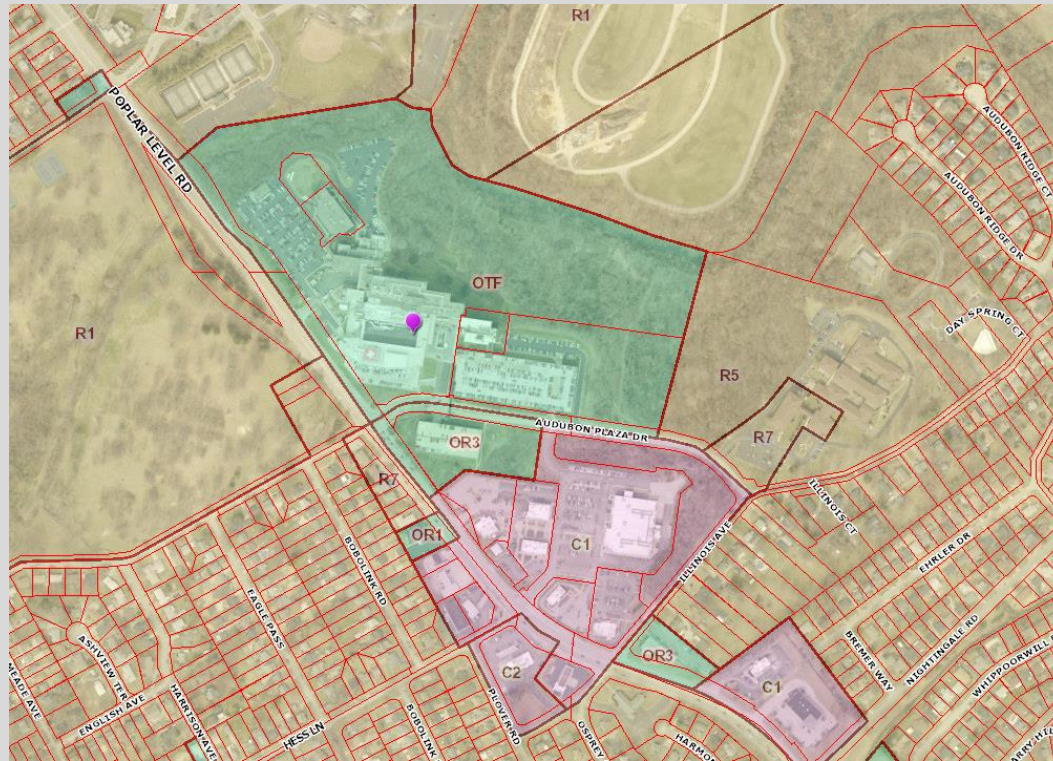
Land Development & Transportation Committee
May 13th 2021



EXISTING SITE AERIAL



SITE INFORMATION



- OTF, Neighborhood Form District Site
- Existing hospital medical campus along Poplar Level corridor
- Rezoned under Docket #9-38-76
- Change in use to medical office

ACCESS POINT FROM POPLAR LEVEL RD



VIEW OF ACCESSORY STRUCTURE AREA



EXISTING VIEW OF MEDICAL COMPLEX FROM AUDUBON PLAZA DRIVE



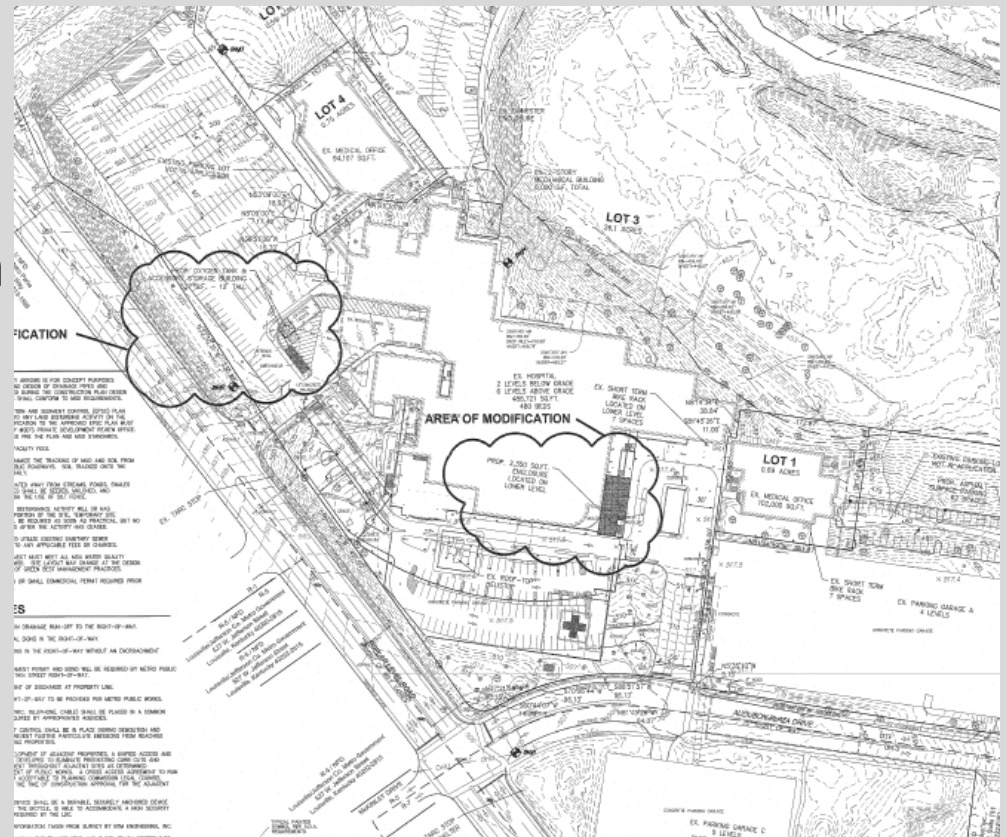
EXISTING ENTRY VIEW OF PROPOSED LEARNING CENTER LOCATION



<p>CHANGING INFORMATION-SITE IMPROVEMENTS</p> <p>EXISTING IMPROVEMENTS: 1.000 SQ. FT. (0.02 AC.)</p> <p>PROPOSED IMPROVEMENTS: 1.000 SQ. FT. (0.02 AC.)</p> <p>TOTAL AREA OF IMPROVEMENTS: 1.000 SQ. FT. (0.02 AC.)</p> <p>TOTAL SITE IMPROVEMENT: 1.000 SQ. FT. (0.02 AC.)</p>	<p>LANDSCAPING REQUIREMENTS</p> <p>EXISTING VUL. 1.000 SQ. FT. (0.02 AC.)</p> <p>PROPOSED VUL. 1.000 SQ. FT. (0.02 AC.)</p> <p>TOTAL VUL. 1.000 SQ. FT. (0.02 AC.)</p> <p>EXISTING VUL. 1.000 SQ. FT. (0.02 AC.)</p> <p>PROPOSED VUL. 1.000 SQ. FT. (0.02 AC.)</p> <p>TOTAL VUL. 1.000 SQ. FT. (0.02 AC.)</p>	<p>TREE CANOPY CALCULATIONS</p> <p>TOTAL TREE CANOPY: 1.000 SQ. FT. (0.02 AC.)</p> <p>TOTAL TREE CANOPY: 1.000 SQ. FT. (0.02 AC.)</p> <p>TOTAL TREE CANOPY: 1.000 SQ. FT. (0.02 AC.)</p> <p>TOTAL TREE CANOPY: 1.000 SQ. FT. (0.02 AC.)</p> <p>TOTAL TREE CANOPY: 1.000 SQ. FT. (0.02 AC.)</p>	<p>SITE DATA</p> <p>TOTAL SITE AREA: 1.000 ACRES</p> <p>LOT 1: 504 ACRES</p> <p>LOT 2: 504 ACRES</p> <p>LOT 3: 1.1 ACRES</p> <p>LOT 4: 504 ACRES</p> <p>LOT 5: 504 ACRES</p> <p>TOTAL SITE AREA: 1.000 ACRES</p>	<p>PARKING CALCULATIONS</p> <p>TOTAL PARKING: 1.000 SPACES</p> <p>TOTAL PARKING: 1.000 SPACES</p> <p>TOTAL PARKING: 1.000 SPACES</p> <p>TOTAL PARKING: 1.000 SPACES</p> <p>TOTAL PARKING: 1.000 SPACES</p>	<p>MODIFIED CONDITIONAL USE PERMIT PLAN</p> <p>CASE# 21-MCUP-0002</p> <p>150EVP1AN1070</p> <p>DOCKET # 9-30-78, 8-41-78, 8-24-81, 8-24-83, 8-24-85, 8-24-86, 8-24-87, 8-24-88, 8-24-89, 8-24-90, 8-24-91, 8-24-92, 8-24-93, 8-24-94, 8-24-95, 8-24-96, 8-24-97, 8-24-98, 8-24-99, 8-24-00, 8-24-01, 8-24-02, 8-24-03, 8-24-04, 8-24-05, 8-24-06, 8-24-07, 8-24-08, 8-24-09, 8-24-10, 8-24-11, 8-24-12, 8-24-13, 8-24-14, 8-24-15, 8-24-16, 8-24-17, 8-24-18, 8-24-19, 8-24-20, 8-24-21, 8-24-22, 8-24-23, 8-24-24, 8-24-25, 8-24-26, 8-24-27, 8-24-28, 8-24-29, 8-24-30, 8-24-31, 8-24-32, 8-24-33, 8-24-34, 8-24-35, 8-24-36, 8-24-37, 8-24-38, 8-24-39, 8-24-40, 8-24-41, 8-24-42, 8-24-43, 8-24-44, 8-24-45, 8-24-46, 8-24-47, 8-24-48, 8-24-49, 8-24-50, 8-24-51, 8-24-52, 8-24-53, 8-24-54, 8-24-55, 8-24-56, 8-24-57, 8-24-58, 8-24-59, 8-24-60, 8-24-61, 8-24-62, 8-24-63, 8-24-64, 8-24-65, 8-24-66, 8-24-67, 8-24-68, 8-24-69, 8-24-70, 8-24-71, 8-24-72, 8-24-73, 8-24-74, 8-24-75, 8-24-76, 8-24-77, 8-24-78, 8-24-79, 8-24-80, 8-24-81, 8-24-82, 8-24-83, 8-24-84, 8-24-85, 8-24-86, 8-24-87, 8-24-88, 8-24-89, 8-24-90, 8-24-91, 8-24-92, 8-24-93, 8-24-94, 8-24-95, 8-24-96, 8-24-97, 8-24-98, 8-24-99, 8-24-00, 8-24-01, 8-24-02, 8-24-03, 8-24-04, 8-24-05, 8-24-06, 8-24-07, 8-24-08, 8-24-09, 8-24-10, 8-24-11, 8-24-12, 8-24-13, 8-24-14, 8-24-15, 8-24-16, 8-24-17, 8-24-18, 8-24-19, 8-24-20, 8-24-21, 8-24-22, 8-24-23, 8-24-24, 8-24-25, 8-24-26, 8-24-27, 8-24-28, 8-24-29, 8-24-30, 8-24-31, 8-24-32, 8-24-33, 8-24-34, 8-24-35, 8-24-36, 8-24-37, 8-24-38, 8-24-39, 8-24-40, 8-24-41, 8-24-42, 8-24-43, 8-24-44, 8-24-45, 8-24-46, 8-24-47, 8-24-48, 8-24-49, 8-24-50, 8-24-51, 8-24-52, 8-24-53, 8-24-54, 8-24-55, 8-24-56, 8-24-57, 8-24-58, 8-24-59, 8-24-60, 8-24-61, 8-24-62, 8-24-63, 8-24-64, 8-24-65, 8-24-66, 8-24-67, 8-24-68, 8-24-69, 8-24-70, 8-24-71, 8-24-72, 8-24-73, 8-24-74, 8-24-75, 8-24-76, 8-24-77, 8-24-78, 8-24-79, 8-24-80, 8-24-81, 8-24-82, 8-24-83, 8-24-84, 8-24-85, 8-24-86, 8-24-87, 8-24-88, 8-24-89, 8-24-90, 8-24-91, 8-24-92, 8-24-93, 8-24-94, 8-24-95, 8-24-96, 8-24-97, 8-24-98, 8-24-99, 8-24-00, 8-24-01, 8-24-02, 8-24-03, 8-24-04, 8-24-05, 8-24-06, 8-24-07, 8-24-08, 8-24-09, 8-24-10, 8-24-11, 8-24-12, 8-24-13, 8-24-14, 8-24-15, 8-24-16, 8-24-17, 8-24-18, 8-24-19, 8-24-20, 8-24-21, 8-24-22, 8-24-23, 8-24-24, 8-24-25, 8-24-26, 8-24-27, 8-24-28, 8-24-29, 8-24-30, 8-24-31, 8-24-32, 8-24-33, 8-24-34, 8-24-35, 8-24-36, 8-24-37, 8-24-38, 8-24-39, 8-24-40, 8-24-41, 8-24-42, 8-24-43, 8-24-44, 8-24-45, 8-24-46, 8-24-47, 8-24-48, 8-24-49, 8-24-50, 8-24-51, 8-24-52, 8-24-53, 8-24-54, 8-24-55, 8-24-56, 8-24-57, 8-24-58, 8-24-59, 8-24-60, 8-24-61, 8-24-62, 8-24-63, 8-24-64, 8-24-65, 8-24-66, 8-24-67, 8-24-68, 8-24-69, 8-24-70, 8-24-71, 8-24-72, 8-24-73, 8-24-74, 8-24-75, 8-24-76, 8-24-77, 8-24-78, 8-24-79, 8-24-80, 8-24-81, 8-24-82, 8-24-83, 8-24-84, 8-24-85, 8-24-86, 8-24-87, 8-24-88, 8-24-89, 8-24-90, 8-24-91, 8-24-92, 8-24-93, 8-24-94, 8-24-95, 8-24-96, 8-24-97, 8-24-98, 8-24-99, 8-24-00, 8-24-01, 8-24-02, 8-24-03, 8-24-04, 8-24-05, 8-2</p>
--	--	---	---	---	--

DEVELOPMENT PLAN SPECIFICS

- **Accessory structure addition**
 - 527 SF
 - Area of existing pavement
- **Learning Center addition**
 - 2350 SF
 - Enclosing lower level area
- **LDC compliant**
- **Update to square footage binding element**



REQUESTS

- Revised Detailed District Development Plan
 - Modified CUP approved by Board of Zoning Adjustment on May 3rd
 - Land Development Code compliant

QUESTIONS?