

Land Development and Transportation Committee

Staff Report

May 13, 2021



Case No:	21-DDP-0029/21-RSUB-0003
Project Name:	Fordham Park
Location:	13501 Factory Ln
Owner(s):	Pulte Homes of Ohio LLC
Applicant:	Pulte Homes of Ohio LLC
Jurisdiction:	Louisville Metro
Council District:	17 – Markus Winkler
Case Manager:	Jay Lockett, AICP, Planner I

REQUEST(S)

- **Revised Detailed District Development Plan** with revisions to binding elements.
- **Revised Major Preliminary Subdivision Plan**

CASE SUMMARY/BACKGROUND

The applicant is proposing to create 34 buildable lots on approximately 8.19 acres within the R-5 zoning district and the Neighborhood form district. The site is located in northeastern Louisville Metro and was previously rezoned to R-5 under docket 18ZONE1061. The previously approved plan showed the same number of buildable lots with a slightly different lotting pattern and roadway network. The previous plan also showed a proposed left turn lane in the Factory Lane right-of-way. Due to an immediate lack of necessary right-of-way to construct the proposed road improvements, the applicant has proposed to remove that from the plan and add a binding element relating to required contribution for road improvements.

STAFF FINDING

The request is adequately justified and meets the standard of review. The change from the previous plan is reasonable and the addition of a binding element will ensure that the developer makes a contribution to required roadway improvements in the area.

TECHNICAL REVIEW

There are no outstanding technical issues associated with this request.

INTERESTED PARTY COMMENTS

Staff has received no comments from interested parties concerning this request.

STANDARD OF REVIEW AND STAFF ANALYSIS FOR RDDDP and AMENDMENT TO BINDING ELEMENTS

- a. The conservation of natural resources on the property proposed for development, including: trees and other living vegetation, steep slopes, water courses, flood plains, soils, air quality, scenic views, and historic sites;

STAFF: There do not appear to be any environmental constraints or historic resources on the subject site. Tree canopy requirements of the Land Development Code will be provided on the subject site.

- b. The provisions for safe and efficient vehicular and pedestrian transportation both within the development and the community;

STAFF: Provisions for safe and efficient vehicular and pedestrian transportation within and around the development and the community has been provided, and Metro Public Works has approved the preliminary development plan.

- c. The provision of sufficient open space (scenic and recreational) to meet the needs of the proposed development;

STAFF: There are no open space requirements pertinent to the current proposal.

- d. The provision of adequate drainage facilities on the subject site in order to prevent drainage problems from occurring on the subject site or within the community;

STAFF: The Metropolitan Sewer District has approved the preliminary development plan and will ensure the provision of adequate drainage facilities on the subject site in order to prevent drainage problems from occurring on the subject site or within the community.

- e. The compatibility of the overall site design (location of buildings, parking lots, screening, landscaping) and land use or uses with the existing and projected future development of the area;

STAFF: The overall site design and land uses are compatible with the existing and future development of the area. Appropriate landscape buffering and screening will be provided to screen adjacent properties and roadways. Buildings and parking lots will meet all required setbacks.

- f. Conformance of the development plan with the Comprehensive Plan and Land Development Code. Revised plan certain development plans shall be evaluated for conformance with the non-residential and mixed-use intent of the form districts and comprehensive plan.

STAFF: The development plan conforms to applicable guidelines and policies of the Comprehensive Plan and to requirements of the Land Development Code.

REQUIRED ACTIONS:

- **APPROVE** or **DENY** the **Revised Detailed District Development Plan**
- **APPROVE** or **DENY** the **Revised Major Preliminary Subdivision Plan**

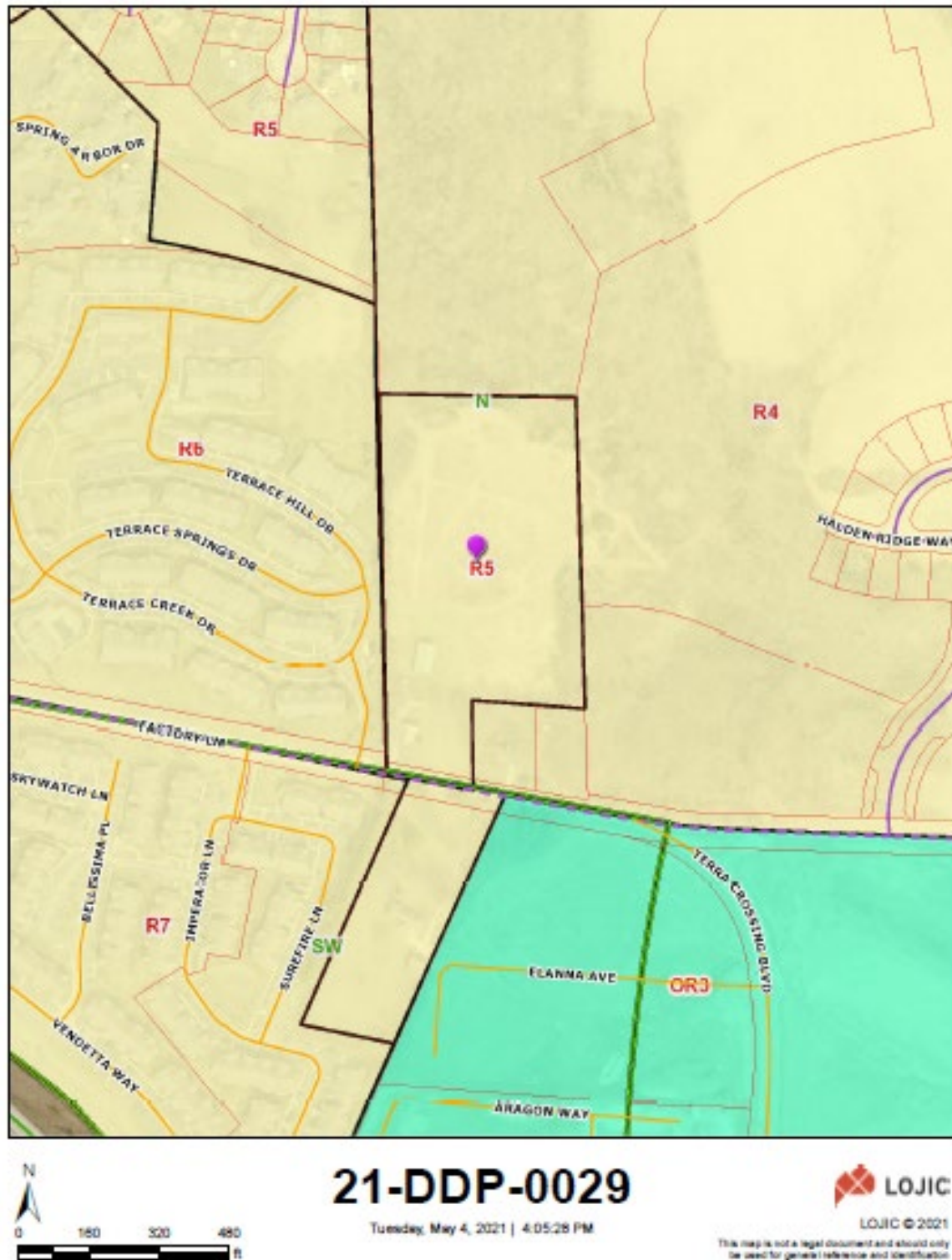
NOTIFICATION

Date	Purpose of Notice	Recipients
4-29-21	Hearing before DRC	1 st tier adjoining property owners Speakers at Planning Commission public hearing Registered Neighborhood Groups in Council District 14

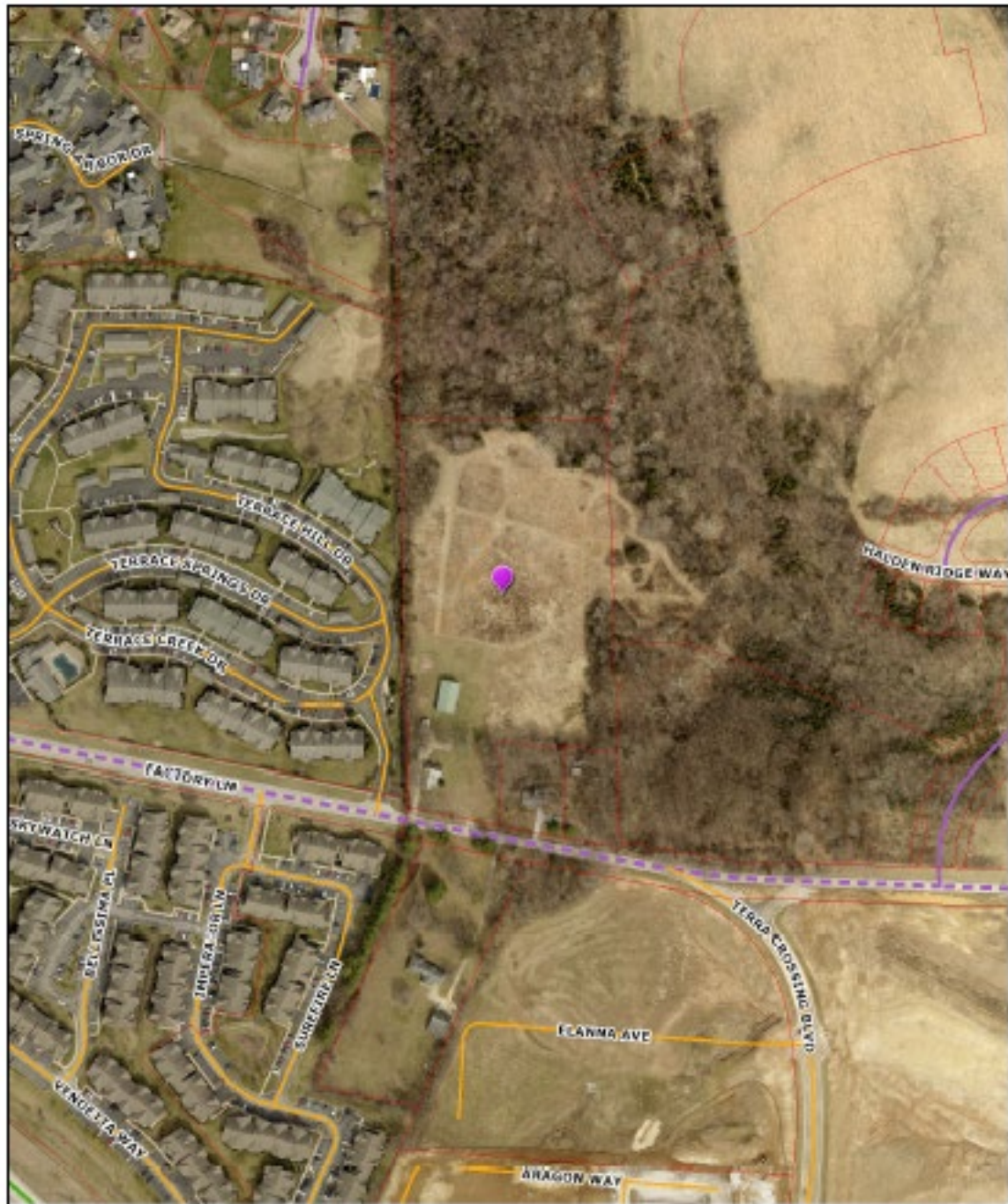
ATTACHMENTS

1. Zoning Map
2. Aerial Photograph
3. Existing Binding Elements with proposed changes

1. Zoning Map



2. Aerial Photograph



21-DDP-0029

Tuesday, May 4, 2021 | 4:04:02 PM



LOJIC © 2021

This map is not a legal document and should only be used for general reference and identification.

3. Existing Binding Elements

1. The development shall be in accordance with the approved district development plan, all applicable sections of the Land Development Code (LDC) and agreed upon binding elements unless amended pursuant to the Land Development Code. Any changes/additions/alterations of any binding element(s) shall be submitted to the Planning Commission or the Planning Commission's designee for review and approval; any changes/additions/alterations not so referred shall not be valid.
2. No further subdivision of the land into a greater number of lots than originally approved will occur without approval of the Planning Commission.
3. A note shall be placed on the preliminary plan, construction plan and the record plat that states, "Construction fencing shall be erected prior to any grading or construction activities - preventing compaction of root systems of trees to be preserved. The fencing shall enclose the area beneath the dripline of the tree canopy and shall remain in place until all construction is completed. No parking, material storage, or construction activities shall be permitted within the fenced area."
4. All street signs shall be installed by the Developer, and shall conform to the Manual on Uniform Traffic Control Devices (MUTCD) requirements. Street signs shall be installed prior to the recording of the subdivision record plat or occupancy of the first residence on the street, and shall be in place at the time of any required bond release. The address number shall be displayed on a structure prior to requesting a certificate of occupancy for that structure.
5. The applicant shall install signs, approved by the Metro Public Works Dept., which indicate the future extension of the public rights of way as shown on the preliminary subdivision plan. Such signs shall be installed prior to release of bonds for the installation of the street infrastructure.
6. Open space lots shall not be further subdivided or developed for any other use and shall remain as open space in perpetuity, unless approved by the Louisville Metro Planning Commission. A note to this effect shall be placed on the record plat.
7. The developer shall be responsible for maintenance of all drainage facilities and undeveloped lots ensuring prevention of mosquito breeding, until such time as the drainage bond is released.
8. After release of the drainage bond, mosquito abatement on open space lots shall be the responsibility of the Homeowners Association. Accumulations of water in which mosquito larvae breed or have the potential to breed are required to be treated with a mosquito larvicide approved by the Louisville Metro Health Department. Larvacides shall be administered in accordance with the product's labeling. This language shall appear in the deed of restrictions for the subdivision.
9. Trees will be preserved and/or provided on site and maintained thereafter as required by Chapter 10, Part 1 of the Land Development Code and as indicated in the Tree Canopy Calculations on the Preliminary Subdivision Plan. The applicant shall submit a landscape plan for approval by Planning Commission staff for any trees to be planted to meet the Tree Canopy requirements of Chapter 10, Part 1 of the Land Development Code. A tree preservation plan shall be submitted for review and approval for any trees to be preserved to meet the Tree Canopy requirements of Chapter 10.

10. The applicant shall submit a landscape plan for approval by Planning Commission staff showing plantings and/or other screening and buffering materials to comply with the Chapter 10 of the Land Development Code prior to recording the record plat. The applicant shall provide the landscape materials on the site as specified on the approved Landscape Plan prior to issuance of Certificates of Occupancy for the site.
11. Prior to the recording of the record plat, copies of the recorded documents listed below shall be filed with the Planning Commission.
 - a. Articles of Incorporation filed with the Secretary of State and recorded in the office of the Clerk of Jefferson County and the Certificate of Incorporation of the Homeowners Association.
 - b. A deed of restriction in a form approved by Counsel to the Planning Commission addressing responsibilities for the maintenance of common areas and open space, maintenance of noise barriers, maintenance of WPAs, TPAs and other issues required by these binding elements / conditions of approval.
 - c. Bylaws of the Homeowner's Association in a form approved by the Counsel for the Planning Commission.
12. At the time the developer turns control of the homeowners association over to the homeowners, the developer shall provide sufficient funds to ensure there is no less than \$3,000 cash in the homeowners association account. The subdivision performance bond may be required by the planning Commission to fulfill this funding requirement.
13. Any signature entrance shall be submitted to the Planning Commission staff for review and approval prior to recording the record plat.
14. An Individual Historic Resource Survey Form shall be completed for any historic resources on the subject site. The documentation must occur prior to the issuance of a demolition permit or ground disturbance at the site. The documentation shall be submitted to Urban Design/Historic Preservation Staff upon completion.
15. **The Developer shall contribute a sum, not to exceed \$56,200, as a sharing of cost for roadway improvements within the Factory Ln right-of-way. Payment of the cost share shall be made within 30 days of receiving a written request by the Louisville Metro Works Department.**