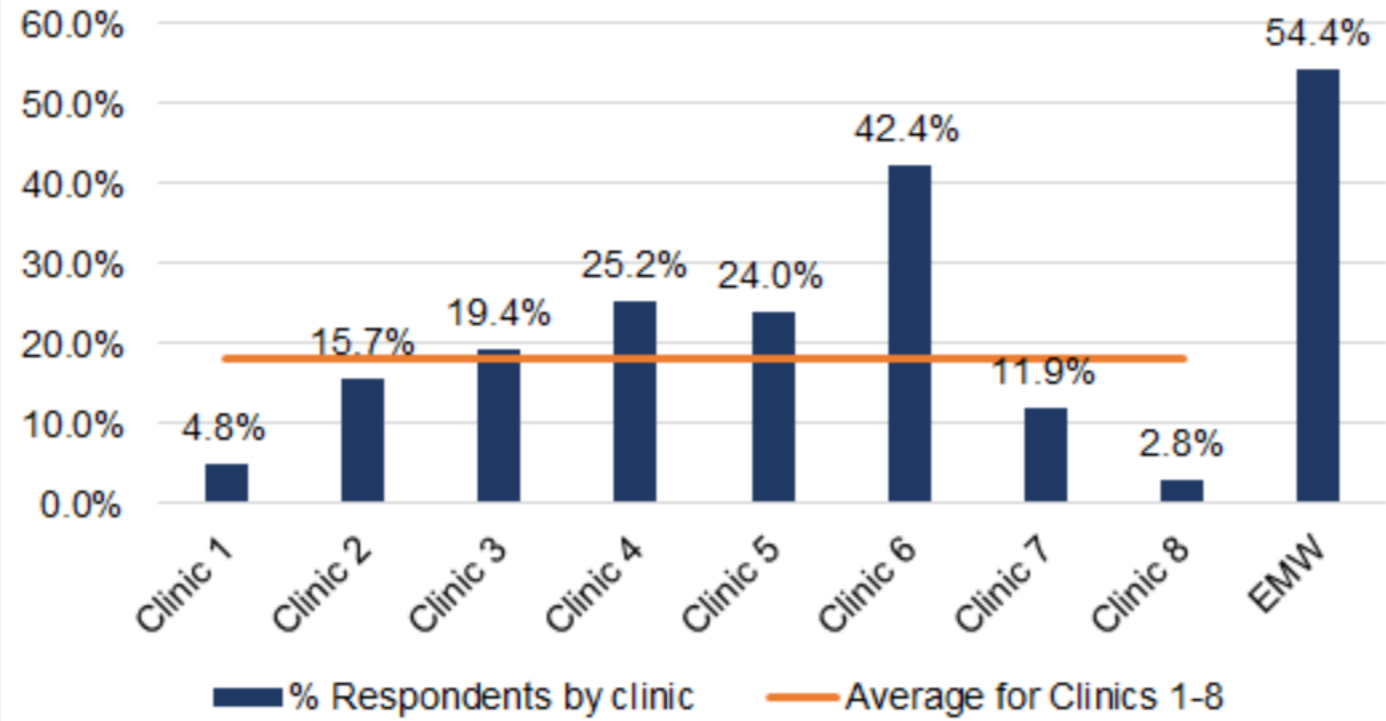



Percentage of patients who report protestors as a challenge for receiving abortion care by clinic.



*Based on responses from 1,524 participants as of 12/23/2020.



There was not an instance observed where a specific person was impeded from entering, but

seemed as though that could be the case. Sergeant Beaven explained to the person that he needed to stand elsewhere, and he complied. There was also one protestor who grabbed or touched the arm of a client as she was walking on the sidewalk toward the clinic. Sergeant Beaven immediately addressed the issue by explaining to the protestor that she could not do that.

Sergeant Beaven was able to determine that the local groups that regularly protest outside the clinic were not causing issues. But some of the groups that only show up on limited occasions who are from out of town were the ones causing issues. It seems that the groups from Henryville and Shelbyville were causing most, if not all, of the issues. Sergeant Beaven learned that they often use social media to get organized to come to Louisville to protest. RTCC has been made aware of this and was requested to monitor them in hopes of providing us with advance notice of them coming to Louisville to protest.

Sergeant Beaven also reported that there is disagreement and sometimes altercations between the local protest groups and ones from out of town over how the ones from out of town conduct themselves.

