

Legal Description for Rezoning

Beginning at a point in the west line of East Orell Road with the north line of Louisville & Jefferson County Riverport Authority, as recorded in deed book 5734 page 569, as recorded in the Office of the Clerk of Jefferson County, Kentucky;

Thence North 45 degrees 41 minutes 07 seconds West a distance of 116.73 feet; to the POINT OF BEGINNING #1 (P.O.B. #1);

Thence North 45 degrees 41 minutes 07 seconds West a distance of 149.16 feet;

Thence North 45 degrees 46 minutes 56 seconds West a distance of 239.63 feet;

Thence North 25 degrees 46 minutes 55 seconds East a distance of 294.07 feet;

Thence South 64 degrees 05 minutes 50 seconds East a distance of 59.92 feet;

Thence North 23 degrees 09 minutes 03 seconds East a distance of 325.42 feet;

Thence South 55 degrees 56 minutes 33 seconds East a distance of 268.58 feet;

Thence North 06 degrees 10 minutes 03 seconds East a distance of 62.22 feet;

Thence South 53 degrees 28 minutes 13 seconds East a distance of 30.72 feet;

Thence South 05 degrees 06 minutes 42 seconds West a distance of 44.97 feet;

Thence South 23 degrees 09 minutes 03 seconds West a distance of 715.11 feet; to the POINT OF BEGINNING #1 (P.O.B. #1), *having an area of 216734 (more or less) or Square Feet, 4.976 (more or less) Acres*

Beginning at a point in the west line of East Orell Road with the north line of Louisville & Jefferson County Riverport Authority, as recorded in deed book 5734 page 569, as recorded in the Office of the Clerk of Jefferson County, Kentucky;

Thence North 45 degrees 41 minutes 07 seconds West a distance of 116.73 feet;

Thence North 23 degrees 09 minutes 03 seconds East a distance of 715.11 feet;

Thence South 05 degrees 06 minutes 42 seconds West a distance of 117.49 feet;

Thence North 79 degrees 30 minutes 18 seconds West a distance of 23.31 feet;

Thence South 05 degrees 54 minutes 26 seconds West a distance of 60.12 feet;

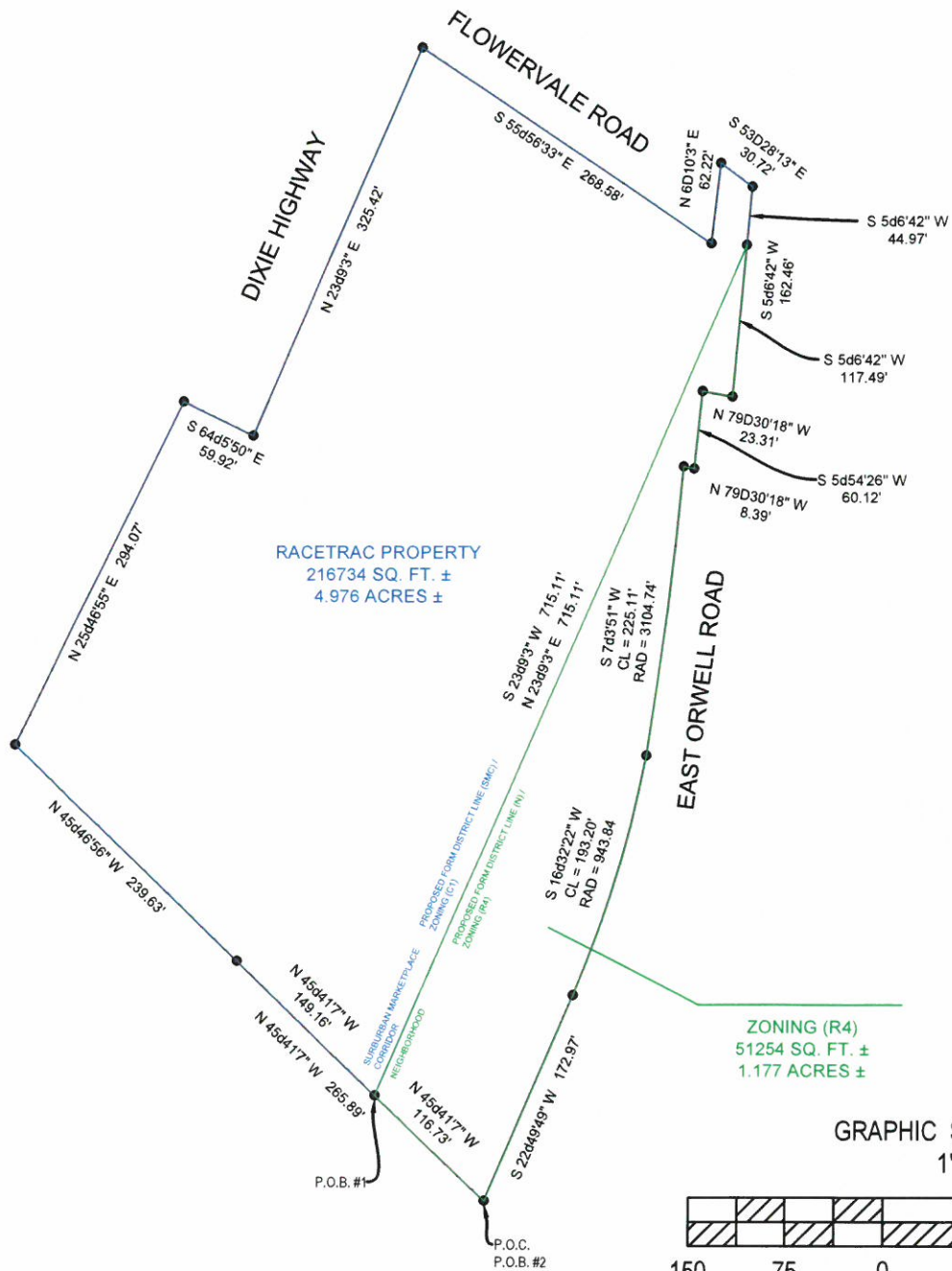
Thence North 79 degrees 30 minutes 18 seconds West a distance of 8.39 feet;

Thence with a non-tangent curve turning to the right with a radius of 3104.75 feet, with an arc length of 225.16 feet, with a chord bearing of South 07 degrees 03 minutes 51 seconds West, with a chord length of 225.11 feet;

Thence with a compound curve turning to the right with a radius of 943.84 feet, with an arc length of 193.54 feet, with a chord bearing of South 16 degrees 32 minutes 22 seconds West, with a chord length of 193.20 feet;

Thence South 22 degrees 49 minutes 49 seconds West a distance of 172.97 feet; to the POINT OF BEGINNING #2 (P.O.B. #2), *having an area of 51254 (more or less) or Square Feet, 1.177 (more or less) Acres*

EXHIBIT "A"



GRAPHIC SCALE IN FEET
1" = 150'

