



CINCINNATI
COLUMBUS
DAYTON
LOUISVILLE

1100 Envoy Circle
Louisville, KY 40299
phone ► 502.365.9950
www.kleingers.com

April 14, 2021

Louisville Metro Planning & Design Services
444 South 5th Street, Suite 300
Louisville, KY. 40202

ATTN: Planning & Design Services
Case Manager

RE: Project National Turnpike
8201 National Turnpike
Louisville, KY 40214

To Whom it may concern,

The Exeter Property Group proposed to construct a 340,306 square foot warehouse / distribution facility on 20.53 acres located at the above referenced location. The site consists of two lots that will be consolidated into one. Lot 1 is listed as 8201 National Turnpike the adjacent lot does not have an address.

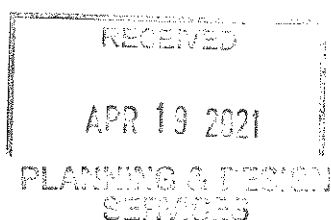
Lot one, known as 8201 National Turnpike is current occupied by a 197,000 +/- warehouse building. The unaddressed lot is vacant and is unimproved. The existing warehouse does not meet the needs of todays users of these types of facilities. Antiquated ceiling heights, clear span storage, quantity and dock locations. The use of the site will remain as the current use. The developer proposes to demolish the existing warehouse and construct a 340,306 warehouse / distribution center and office building that meets the needs to the users. The facility will incorporate loading facilities on both sides of the building to meets the needs of the users.

If you should have any questions, please don't hesitate to contact our office.

Sincerely,
THE KLEINGERS GROUP

Gregory W. Bennett, RLA
Louisville Group Leader

cc: FILE



21-CAT3-0005

JOB # 201163.000
REF# 1.0